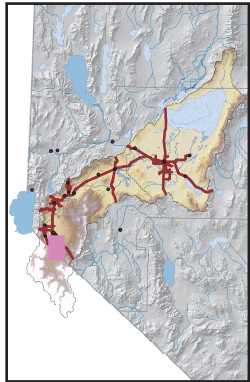
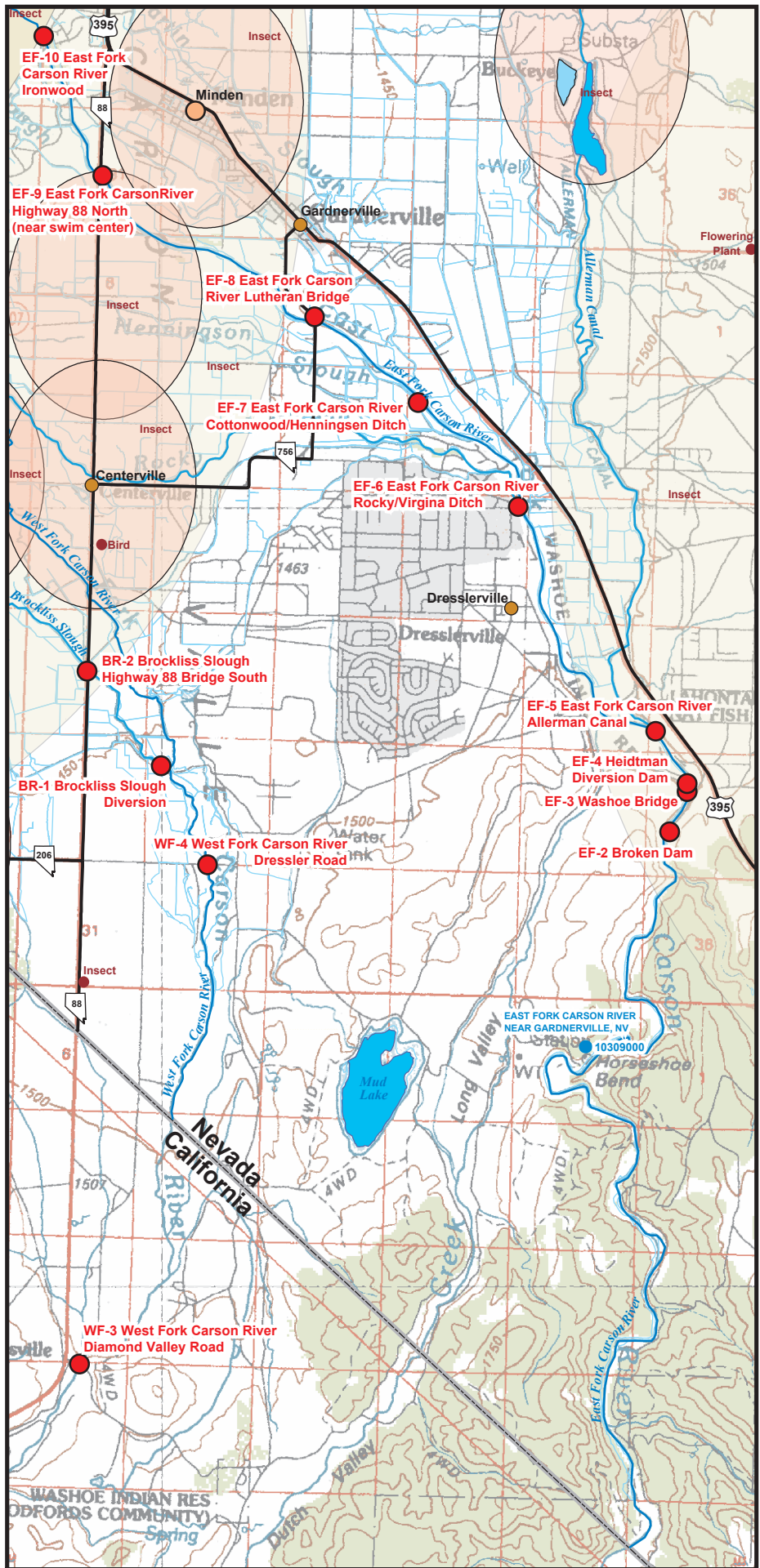


# Carson River Emergency Response Map - Detail Map 1



## EXPLANATION

### Carson River Access Points

- Primary
- Secondary

### Sensitive Species

Represents the area in which the true location of observed extents of sensitive species are considered to occur. The type of sensitive species are located in or near the buffer points. For spills that occur near or in sensitive species areas during business hours call (775) 684-2900. After hours call (775) 882-2790 or (775) 782-4360

- 100 meter buffer around observed location
- 1600 meter buffer around observed location
- 10,000 meter buffer around observed locations

- USGS Realtime Site
- Cities-Towns
- County Seat

### Streams

- Ditch or Intermittent
- Perennial
- Douglas County Ditch Network
- Railroads
- State Maintained Roads

### Basin Boundary

- Basin Boundary
- State Park Boundaries
- County Boundaries

### Waterbodies

- Dry Lake
- Intermittent Waterbody
- Perennial Waterbody



Sources:  
 Nevada Division of Environmental Protection  
 Nevada Department of Transportation  
 Douglas County  
 Washo Tribes  
 Nevada Natural Heritage Program  
 U.S. Geological Survey

NOTE: This map is for reference only. It has not been verified for deterministic purposes

