



8 West Pacific Ave., Henderson, NV 89015

[T] 702-563-0600 [F] 702-563-0610

broadbentinc.com

Creating Solutions. Building Trust.

December 10, 2024

Project No. 23-01-200

Alan Pineda, PE
Professional Engineer
Bureau of Industrial Site Cleanup
Nevada Division of Environmental Protection
375 E. Warm Springs Rd., Ste. 200
Las Vegas, NV 89119

Attn: Mr. Pineda

Re: **Modification No. 4 to the Remedial Design Report**
Closure Unit and Borrow Area Boundary Modification
Three Kids Mine, Henderson, Nevada

Dear Mr. Pineda:

Broadbent & Associates, Inc. (Broadbent) is pleased to submit this revised modification to the *Remedial Design Report, Revision 1* for the Three Kids Mine located in Henderson, Nevada.

Please do not hesitate to contact us if you should have any questions or require additional information.

Sincerely,
BROADBENT & ASSOCIATES, INC.

Kirk Stowers, CEM
Principal Geologist

CC: JD Dotchin, NDEP
Joe McGinley, McGinley & Associates, Inc.
Caitlin Jelle, McGinley & Associates, Inc.
Ann Verwiell, ToxStrategies
Robert Unger, Lakemoor Ventures LLC
Mindy Unger-Wadkins, Lakemoor Ventures LLC
Leo Drozdoff, Drozdoff Group, LLC
Karen Gastineau, Broadbent & Associates, Inc.
Christene Klimek, City of Henderson
Sean Robertson, City of Henderson
Stephanie Garcia-Vause, City of Henderson
Anthony Molloy, City of Henderson
Quincy Edwards, Pulte Group
Doug Adair, Pulte Group
Paul Kenner, on behalf of Pulte Group
Michael Ford, Snell & Wilmer
Brad Cahoon, Dentons
Bryan Douglass, Douglass, Inc.
Charles M. Damus, Laker Development, LLC
Darryn Padfield, River Mountain Bike Shop
David Grossheim, Laker Plaza, Inc.
Frank Sator, Laker Development, LLC
Laird Sanders, Lake Mead Boat Storage
Rhonda Sanders, Lake Mead Boat Storage
Tyler Cahoon, Dentons

**Modification No. 4 to the Remedial Design Report, Revision 1
Closure Unit and Borrow Area Boundary Modification
Three Kids Mine
Henderson, Nevada**

JURAT: I, Karen Gastineau, certify that I am responsible for the services in this document and for the preparation of this document. The services described in this document have been provided in a manner consistent with the current standards of the profession and to the best of my knowledge comply with all applicable federal, State, and local statutes, regulations, ordinances, and the requirements of the Mine Remediation and Reclamation Agreement and Administrative Order on Consent for the Three Kids Mine Site.

Karen Gastineau

**Karen Gastineau
Senior Hydrogeologist
CEM #2468 (4/1/2025)**

December 10, 2024

Date

TECHNICAL MEMORANDUM

To: Alan Pineda, Nevada Division of Environmental Protection
From: Karen Gastineau, Broadbent & Associates, Inc.
Subject: Modification No. 4 to the Remedial Design Report
Closure Unit and Borrow Area Boundary Modification
Three Kids Mine Site, Henderson, Nevada
Date: December 10, 2024

This Technical Memorandum presents Broadbent & Associates, Inc.'s Modification No. 4 to the *Remedial Design Report, Revision 1* dated March 4, 2024 (Remedial Design Report) for the Three Kids Mine Site (Site) in Henderson, Nevada. Primary changes include:

- Modification of Closure Unit 1 to match the observed western and southern boundaries of Tailings Pond 2 after excavation.
- Refinement of the borrow source area map to more clearly show potential borrow material as land owned by Pulte outside of the Closure Units/Impacted Area.

In both cases, changes are needed as remediation and reclamation progressed and more information is obtained regarding site conditions and contractor means and methods. Additional details are provided below.

Closure Unit 1 Modification

The boundary of Tailings Pond 2 inferred during the Remedial Investigation was refined during the excavation of Tailings Pond 2, which was completed on November 14, 2024. Most notably, the southern boundary of Tailings Pond 2 extended farther to the south in two washes, where tailings material was found during remediation to be covered with alluvial sediment. Minor changes were also made to the western boundary of Tailings Pond 2 based on actual extent of tailings. Closure Unit 1 was modified to match the actual footprint of Tailings Pond 2 in the revised Figure 9 (attached). Furthermore, the Central Valley Area (Figure 6) and Location of Ten-Foot Cover (Figures 7) were modified for consistency with the revised Closure Unit 1. As a result, the ten-foot cover will be placed over the full lateral extent of former Tailings Pond 2. Additionally, modification to the Central Valley Area will allow for placement of waste rock as deep fill in areas where extra excavation occurred during remediation. Figure 6 was additionally modified so that the sliver of Pulte property to the east of Laker Plaza on which Laker Plaza is currently encroaching was removed from the Central Valley Area as a location for placement of waste rock.

Borrow Area Source Map Refinement

The Borrow Area Source map included in the Remedial Design Report as Figure 7 showed rough outlines of the three potential borrow source areas: 1) Sedimentary units (Muddy Creek Formation and alluvium), 2) River Mountain volcanics, and 3) Downwind River Mountain volcanics. Revised Figure 7 refines the boundaries of these areas to include land owned by Pulte that is outside of the Closure Units (or Impacted Area). This clarification is necessary based on contractor means and methods for placement of the ten-

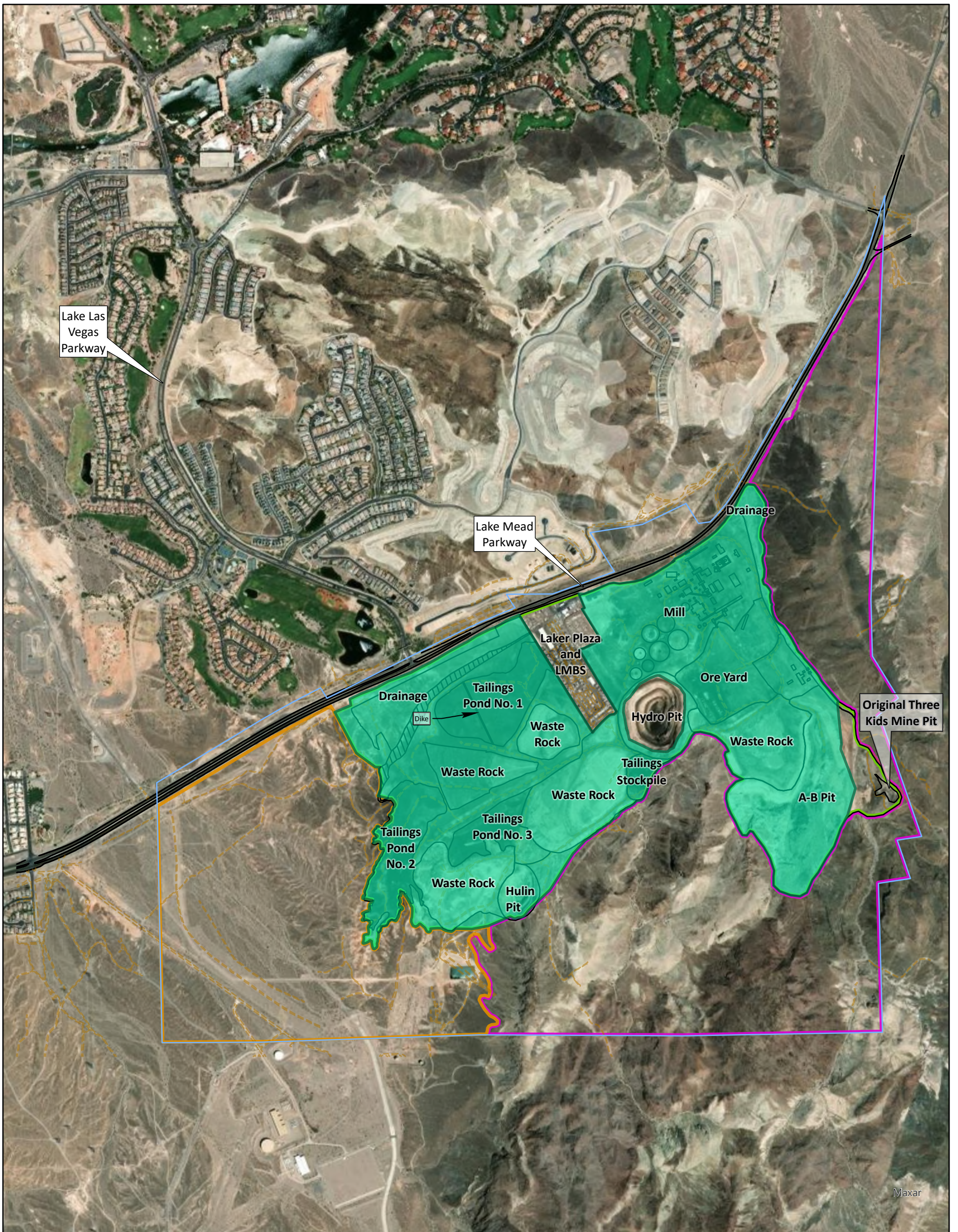
foot cover, which in some areas includes pushing borrow material from the borrow source areas on top of waste rock fill within the Closure Units. Additionally, the ridge between the two southern lobes of Tailings Pond 2 was excluded from the Central Valley Area and included as a borrow source area.

Figures

Figure 6 (Revised)	Central Valley Area
Figure 7 (Revised)	Borrow Source Locations
Figure 8 (Revised)	Location of Ten-Foot Cover
Figure 9 (Revised)	Closure Units

References

Broadbent. 2024. *Remedial Design Report, Revision 1, Three Kids Mine, Henderson, Nevada*. March 4.



Central Valley Area	Project Area
Site Feature	Mine Site
Unimproved Road	Sedimentary Units (alluvium and Muddy Creek Formation)
Tailings Dam	River Mountain Volcanics

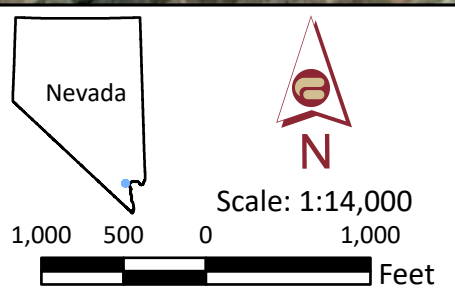


Figure 6

Central Valley Area

Three Kids Mine

BROADBENT

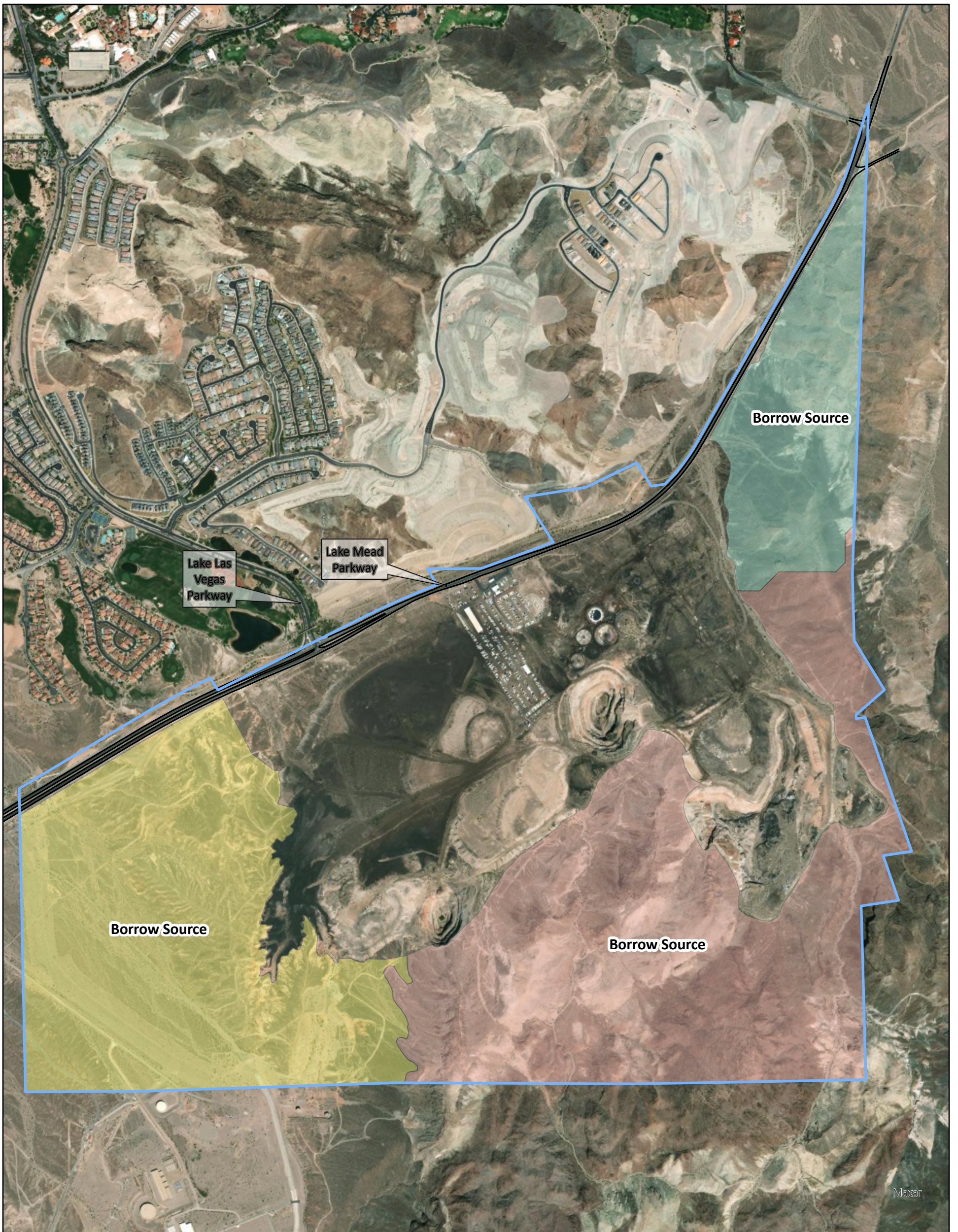
8 West Pacific Avenue
Henderson, NV, 89015
(702) 563-0600 (P) • (702) 563-0610 (F)



Job # 14-01-156 Date: 12/9/2024

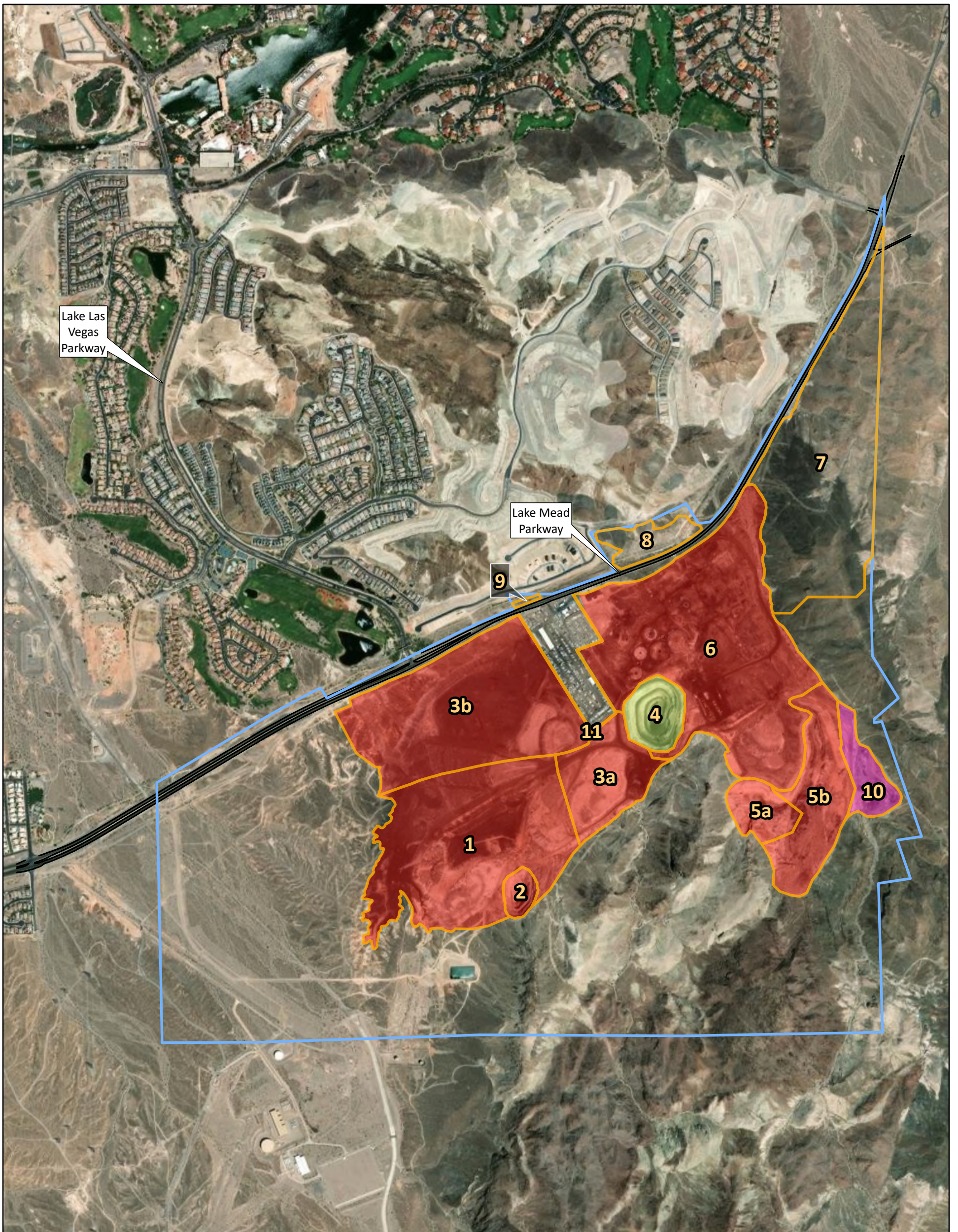
Notes:

1. Imagery Source: Esri World Imagery
2. Datum: NAD 1983 StatePlane Nevada East FIPS 2701 Feet
3. Not a survey. Derived from aerial imagery.

Designed	
Drawn	JCM
Approved	



<p>Legend:</p> <p> Project Area</p> <p>Stratum</p> <ul style="list-style-type: none"> Sedimentary units (Muddy Creek Formation and alluvium) River Mountain volcanics Downwind River Mountain volcanics 	 <p>Nevada</p>  <p>Scale: 1:12,000</p> <p>1,000 500 0 1,000 Feet</p>	<h2 style="margin: 0;">Figure 7</h2> <h3 style="margin: 0;">Borrow Source Locations</h3> <h3 style="margin: 0;">Three Kids Mine</h3>						
<p>Notes:</p> <ol style="list-style-type: none"> 1. Imagery Source: Esri World Imagery 2. Datum: NAD 1983 StatePlane Nevada East FIPS 2701 Feet 3. Not a survey. 	<table border="1" style="width: 100%; border-collapse: collapse;"> <tr> <td style="width: 20%;">Designed</td> <td></td> </tr> <tr> <td>Drawn</td> <td>JCM</td> </tr> <tr> <td>Approved</td> <td></td> </tr> </table>		Designed		Drawn	JCM	Approved	
Designed								
Drawn	JCM							
Approved								
<p>BROADBENT</p> <p>8 West Pacific Avenue Henderson, NV, 89015 (702) 563-0600 (P) • (702) 563-0610 (F)</p> <p>Job # 14-01-156 Date: 12/9/2024</p>								



Legend:

	Ten-foot native soil cover
	Two-foot native soil cover
	Liner plus two-foot native soil cover
	Closure Unit
	Project Area

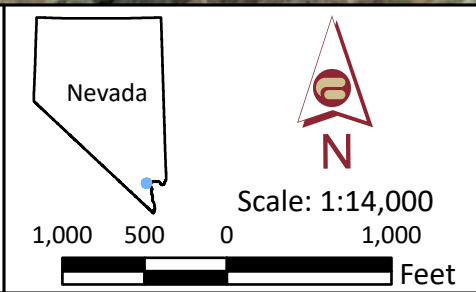



Figure 8

Location of Ten-Foot Cover



BROADBENT

8 West Pacific Avenue
Henderson, NV, 89015
(702) 563-0600 (P) * (702) 563-0610 (F)

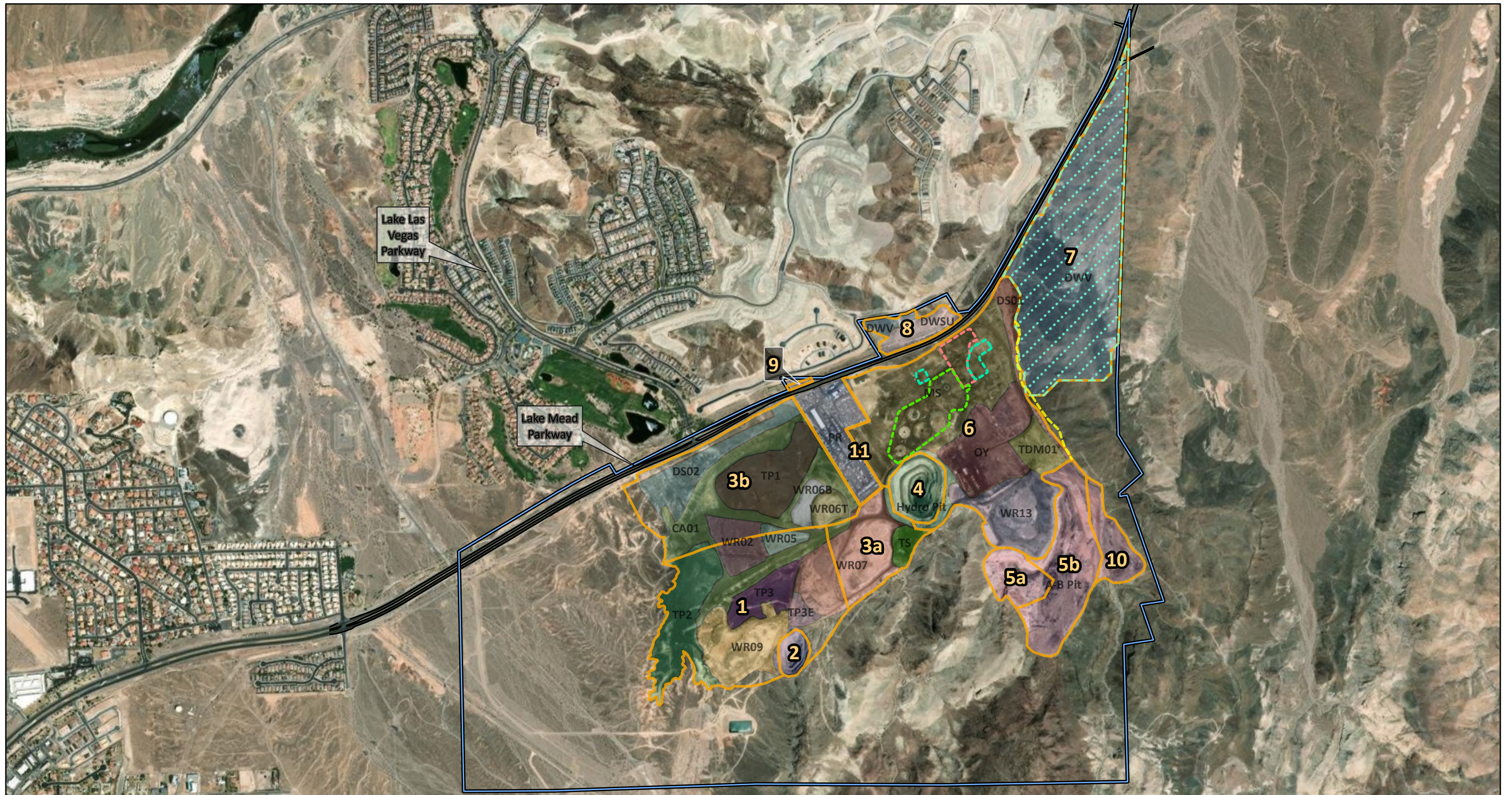
Job # 14-01-156 Date: 12/9/2024

Notes:

1. Imagery Source: Esri World Imagery (Maxar)
2. Datum: NAD 1983 StatePlane Nevada East FIPS 2701 Feet
3. Not a survey. Derived from aerial imagery.
4. A four-foot border around Laker Plaza and Lake Mead Boat Storage (LMBS) will not receive the full ten-foot native soil cover due to slope safety requirements. Additional details are provided in the Remedial Design engineering figures.

Three Kids Mine

Designed	
Drawn	JCM
Approved	



8 West Pacific Avenue
Henderson, NV, 89015
(702) 563-0600 (P) * (702) 563-0610 (F)

Job # 14-01-156 Date: 12/9/2024

Legend:

Closure Unit	Flotation circuit	CA01	OY	WR02
NFA, See Note 5	Thermal processing area	DS01	PR	WR05
Approx. location of stormwater infrastructure connecting parts of unit 10	Fuel farm	DS02	TDM01	WR06B
	Project Area	DWSU	TP1	WR06T
	2024 IU	DWV	TP2	WR07
	A-B Pit	Hulin Pit	TP3	WR09
		Hydro Pit	TP3E	WR13
		MS	TS	

Notes:

1. Imagery Source: Esri World Imagery (Maxar)
2. Datum: NAD 1983 StatePlane Nevada East FIPS 2701 Feet
3. Not a survey.
4. Closure Unit 11 includes a ten-foot buffer around the Laker Plaza/Lake Mead Boat Storage properties.
5. Closure Unit 7 received a No Further Action Determination (NFA) from NDEP on August 22, 2022.
6. Investigative Units are abbreviated as: A-B Pit = A-B Pit, CA01 = Compacted Area 01, DS## = Disturbed Soils ##, DWSU = Downwind sedimentary units, DWV = Downwind volcanics, Hulin Pit = Hulin Pit, Hydro Pit = Hydro Pit, MS = Mill Site, OY = Ore Yard, PR = Laker Plaza and Lake Mead Boat Storage, TDM01 = Scale house, TP # = Tailings Pond #, TS = Tailings Stockpile, WR## = Overburden ##.

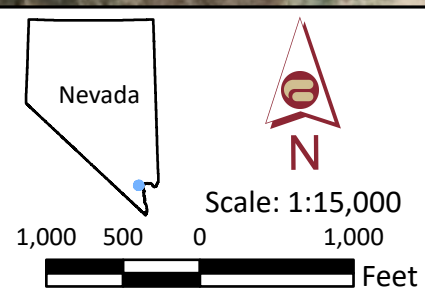


Figure 9	
Closure Units	
Three Kids Mine	
Designed	
Drawn	JCM
Approved	