



8 West Pacific Ave., Henderson, NV 89015

[T] 702-563-0600 [F] 702-563-0610

broadbentinc.com

Creating Solutions. Building Trust.

July 31, 2024

Project No. 23-01-200

Alan Pineda, PE
Professional Engineer
Bureau of Industrial Site Cleanup
Nevada Division of Environmental Protection
375 E. Warm Springs Rd., Ste. 200
Las Vegas, NV 89119

Attn: Mr. Pineda

Re: **Modification No. 1 to the Remedial Design Report**
Expansion of Closure Units to Central Valley Area
Three Kids Mine, Henderson, Nevada

Dear Mr. Pineda:

Broadbent & Associates, Inc. (Broadbent) is pleased to submit this modification to *Remedial Design Report, Revision 1* for the Three Kids Mine located in Henderson, Nevada.

Please do not hesitate to contact us if you should have any questions or require additional information.

Sincerely,
BROADBENT & ASSOCIATES, INC.

Kirk Stowers, CEM
Principal Geologist

CC: JD Dotchin, NDEP
Joe McGinley, McGinley & Associates, Inc.
Caitlin Jelle, McGinley & Associates, Inc.
Ann Verwiel, ToxStrategies
Robert Unger, Lakemoor Ventures LLC
Mindy Unger-Wadkins, Lakemoor Ventures LLC
Leo Drozdoff, Drozdoff Group, LLC
Karen Gastineau, Broadbent & Associates, Inc.
Christene Klimek, City of Henderson
Sean Robertson, City of Henderson
Stephanie Garcia-Vause, City of Henderson
Anthony Molloy, City of Henderson
Quincy Edwards, Pulte Group
Doug Adair, Pulte Group
Paul Kenner, on behalf of Pulte Group
Michael Ford, Snell & Wilmer
Brad Cahoon, Dentons
Bryan Douglass, Douglass, Inc.
Charles M. Damus, Laker Development, LLC
Darryn Padfield, River Mountain Bike Shop
David Grossheim, Laker Plaza, Inc.
Frank Sator, Laker Development, LLC
Laird Sanders, Lake Mead Boat Storage
Rhonda Sanders, Lake Mead Boat Storage
Tyler Cahoon, Dentons

**Modification No. 1 to the Remedial Design Report, Revision 1
Expansion of Closure Units to Central Valley Area
Three Kids Mine
Henderson, Nevada**

JURAT: I, Karen Gastineau, certify that I am responsible for the services in this document and for the preparation of this document. The services described in this document have been provided in a manner consistent with the current standards of the profession and to the best of my knowledge comply with all applicable federal, State, and local statutes, regulations, ordinances, and the requirements of the Mine Remediation and Reclamation Agreement and Administrative Order on Consent for the Three Kids Mine Site.

Karen Gastineau

**Karen Gastineau
Senior Hydrogeologist
CEM #2468 (4/1/2025)**

July 31, 2024

Date

TECHNICAL MEMORANDUM

To: Alan Pineda, Nevada Division of Environmental Protection
From: Karen Gastineau, Broadbent & Associates, Inc.
Subject: Modification No. 1 to the Remedial Design Report
Expansion of Closure Units to Central Valley Area
Three Kids Mine Site, Henderson, Nevada
Date: July 31, 2024

This Technical Memorandum presents Broadbent & Associates, Inc.'s recommended Modification No. 1 to the *Remedial Design Report, Revision 1* dated March 4, 2024 (Remedial Design Report) for the Three Kids Mine Site in Henderson, Nevada.

Closure Unit Modification

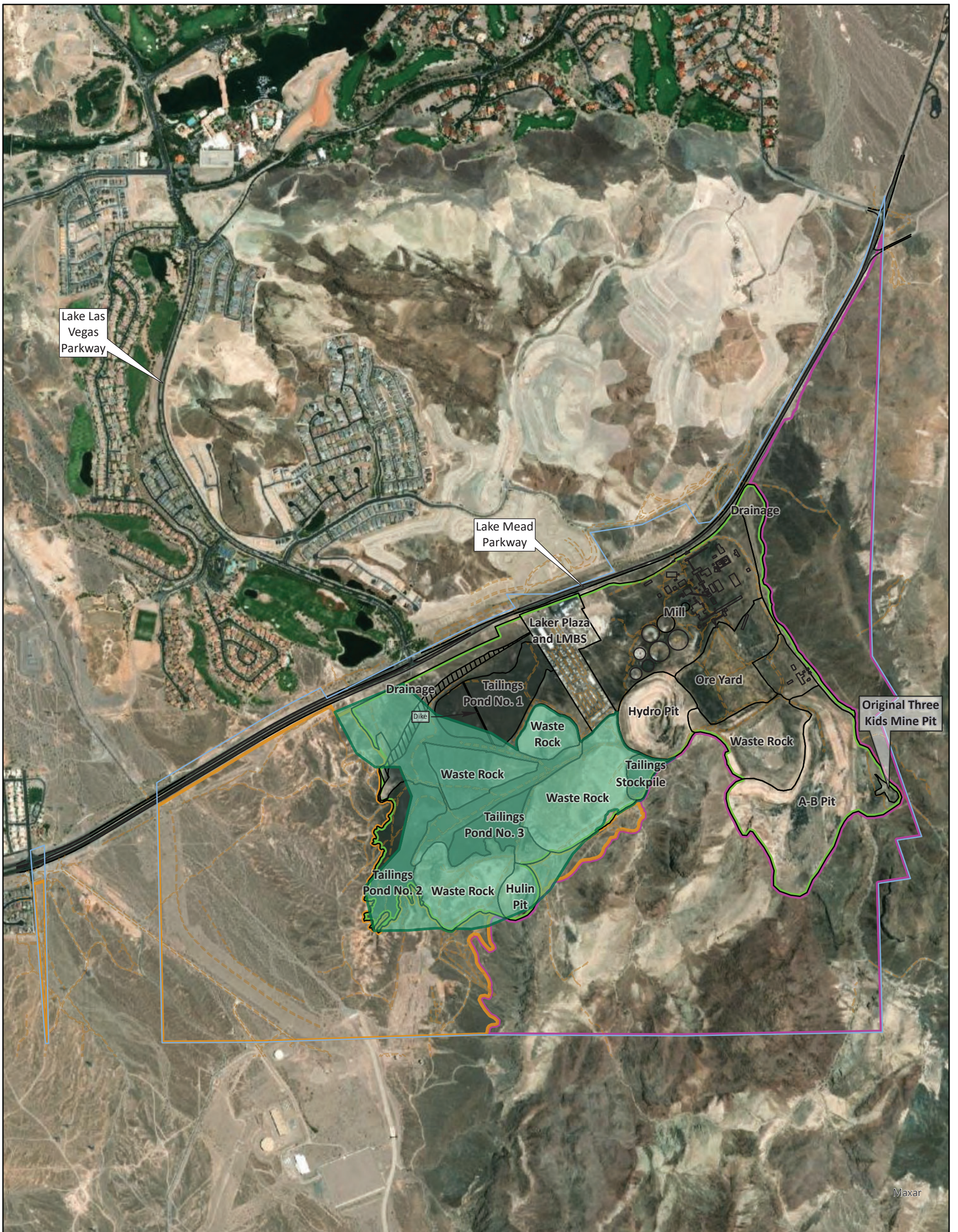
The Central Valley Area approved for placement of waste rock as deep fill depicted in the Remedial Design Report exceeds the boundaries of the former mine site/impacted area that aligns with Closure Units presented in Figure 9 of the Remedial Design Report. The outline of the Central Valley Area was based on areas identified as requiring deep fill to achieve final grade and was considered in the *Leaching Analysis Report, Revision 1*.

When the Remedial Design Report was finalized, it was not clear if waste rock would be used as fill in the areas of the Central Valley outside of the Closure Unit boundaries as of March 2024; however, the contractor has recently indicated that they would like to do so. As a result, 10 feet of native soil cover will be required in these areas and the Closure Units will need to be expanded.

The attached revised Figure 9 depicts Closure Units expanded to encompass the areas that will receive waste rock. This includes a small change to Closure Unit 3a, expansion of Closure Unit 1 to south, and expansion of Closure Unit 3b to the northwest. Additionally, revised Figure 8 depicts the areas that will receive 10 feet of native soil cover with the expanded Closure Units.

Figures

Figure 6 Central Valley Area
Figure 8 Location of Ten-Foot Cover (revised)
Figure 9 Closure Units (revised)



Legend:

Central Valley Area	Project Area
Site Feature	Mine Site
Unimproved Road	Sedimentary Units (alluvium and Muddy Creek Formation)
Tailings Dam	River Mountain Volcanics

Nevada

Scale: 1:14,000

1,000 500 0 1,000 Feet

Figure 6

Central Valley Area

Three Kids Mine

BROADBENT

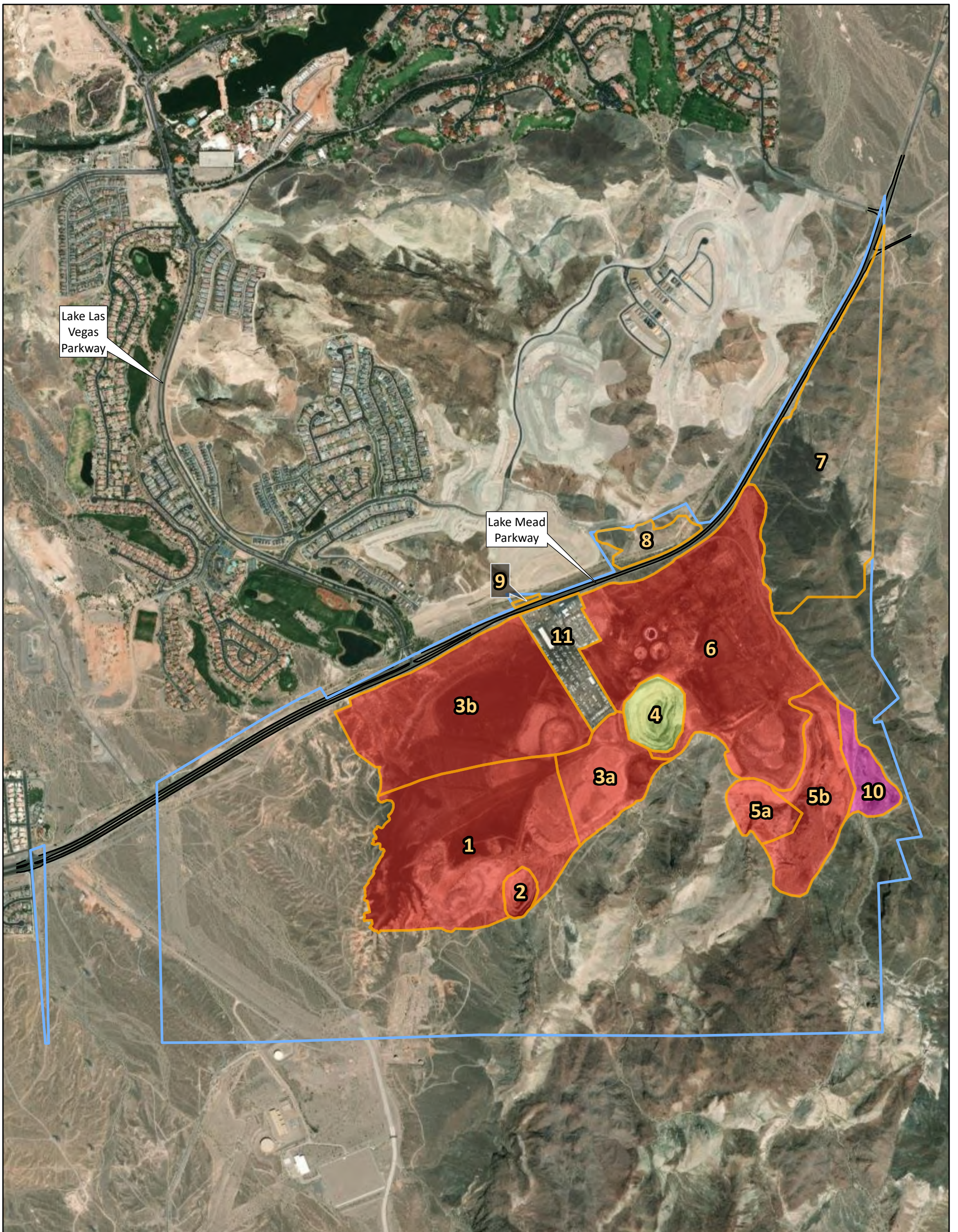
8 West Pacific Avenue
Henderson, NV, 89015
(702) 563-0600 (P) • (702) 563-0610 (F)



Job # 14-01-156 Date: 9/20/2022

Notes:

1. Imagery Source: Esri World Imagery
2. Datum: NAD 1983 StatePlane Nevada East FIPS 2701 Feet
3. Not a survey. Derived from aerial imagery.

Designed	
Drawn	JCM
Approved	



<p>Legend:</p> <ul style="list-style-type: none"> Ten-foot native soil cover Two-foot native soil cover Liner plus two-foot native soil cover Closure Unit Project Area 	<div style="text-align: center;">  <p>Nevada</p>  <p>N</p> <p>Scale: 1:14,000</p> <p>1,000 500 0 1,000</p> <p>Feet</p> </div>	<p>Figure 8</p> <p>Location of Ten-Foot Cover</p>
--	--	--

BROADBENT

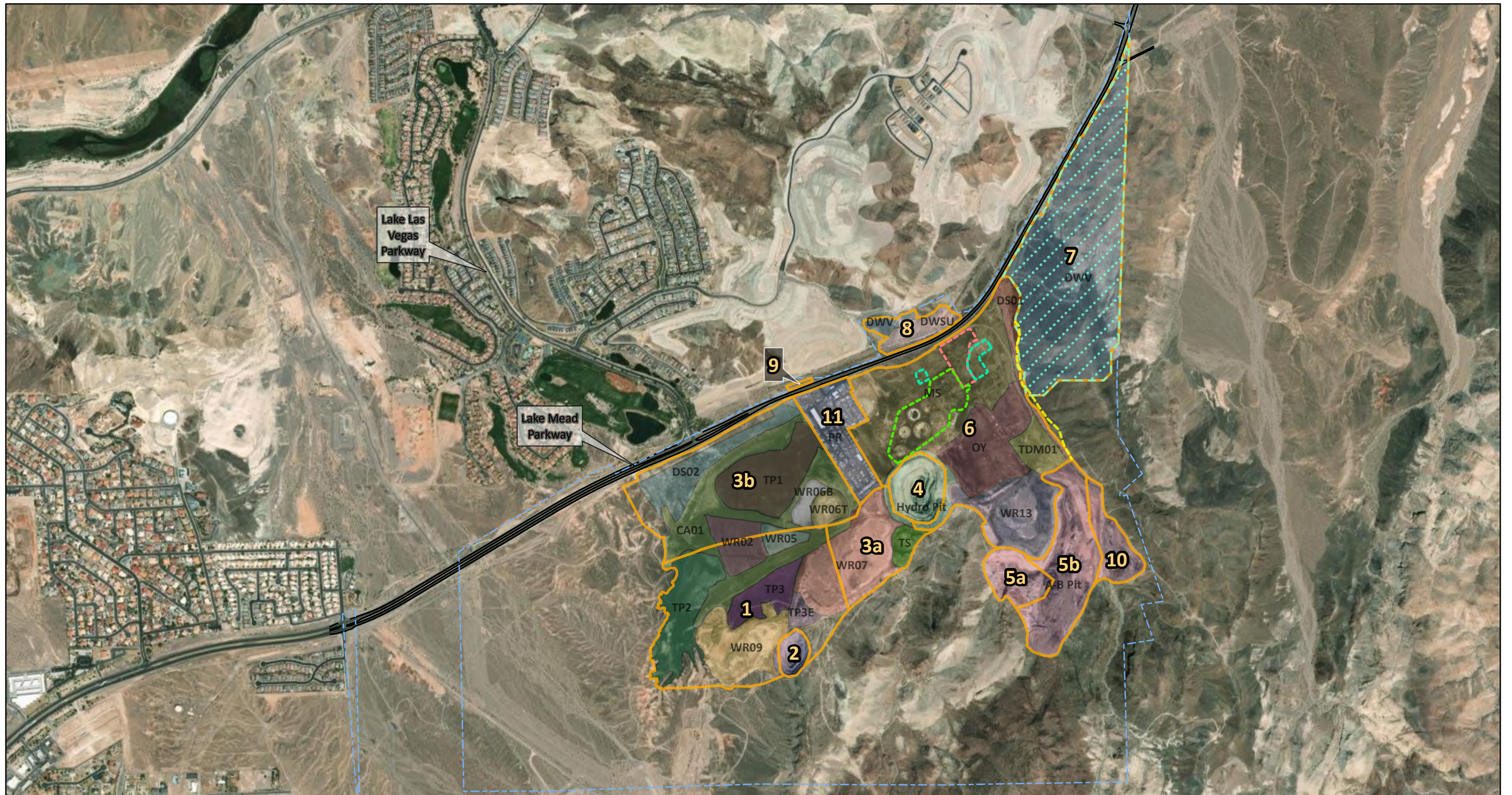
8 West Pacific Avenue
Henderson, NV, 89015
(702) 563-0600 (P) * (702) 563-0610 (F)

Job # 14-01-156 Date: 7/29/2024

Notes:

1. Imagery Source: Esri World Imagery (Maxar)
2. Datum: NAD 1983 StatePlane Nevada East FIPS 2701 Feet
3. Not a survey. Derived from aerial imagery.
4. A four-foot border around Laker Plaza and Lake Mead Boat Storage (LMBS) will not receive the full ten-foot native soil cover due to slope safety requirements. Additional details are provided in the Remedial Design engineering figures.

Three Kids Mine	
Designed	
Drawn	JCM
Approved	



8 West Pacific Avenue
Henderson, NV, 89015
(702) 563-0600 (P) * (702) 563-0610 (F)

Job # 14-01-156 Date: 7/29/2024

Legend:

Closure Unit	Flotation circuit	CA01	OY	WR02
NFA, See Note 5	Thermal processing area	DS01	PR	WR05
Approx. location of stormwater infrastructure connecting parts of unit 10	Fuel farm	DS02	TDM01	WR06B
	Project Area	DWSU	TP1	WR06T
		DWV	TP2	WR07
		Hulin Pit	TP3	WR09
		Hydro Pit	TP3E	WR13
		A-B Pit	MS	
			TS	

Notes:

1. Imagery Source: Esri World Imagery (Maxar)
2. Datum: NAD 1983 StatePlane Nevada East FIPS 2701 Feet
3. Not a survey.
4. Closure Unit 11 includes a ten-foot buffer around the Laker Plaza/Lake Mead Boat Storage properties.
5. Closure Unit 7 received a No Further Action Determination (NFA) from NDEP on August 22, 2022.
6. Investigative Units are abbreviated as: A-B Pit = A-B Pit, CA01 = Compacted Area 01, DS## = Disturbed Soils ##, DWSU = Downwind sedimentary units, DWV = Downwind volcanics, Hulin Pit = Hulin Pit, Hydro Pit = Hydro Pit, MS = Mill Site, OY = Ore Yard, PR = Laker Plaza and Lake Mead Boat Storage, TDM01 = Scale house, TP # = Tailings Pond #, TS = Tailings Stockpile, WR## = Overburden ##.

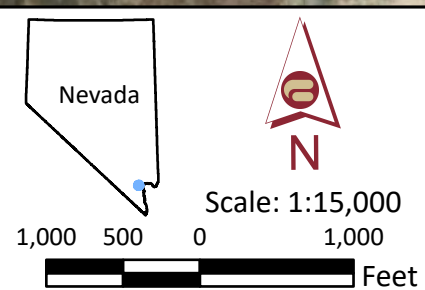


Figure 9	
Closure Units	
Three Kids Mine	
Designed	
Drawn	JCM
Approved	