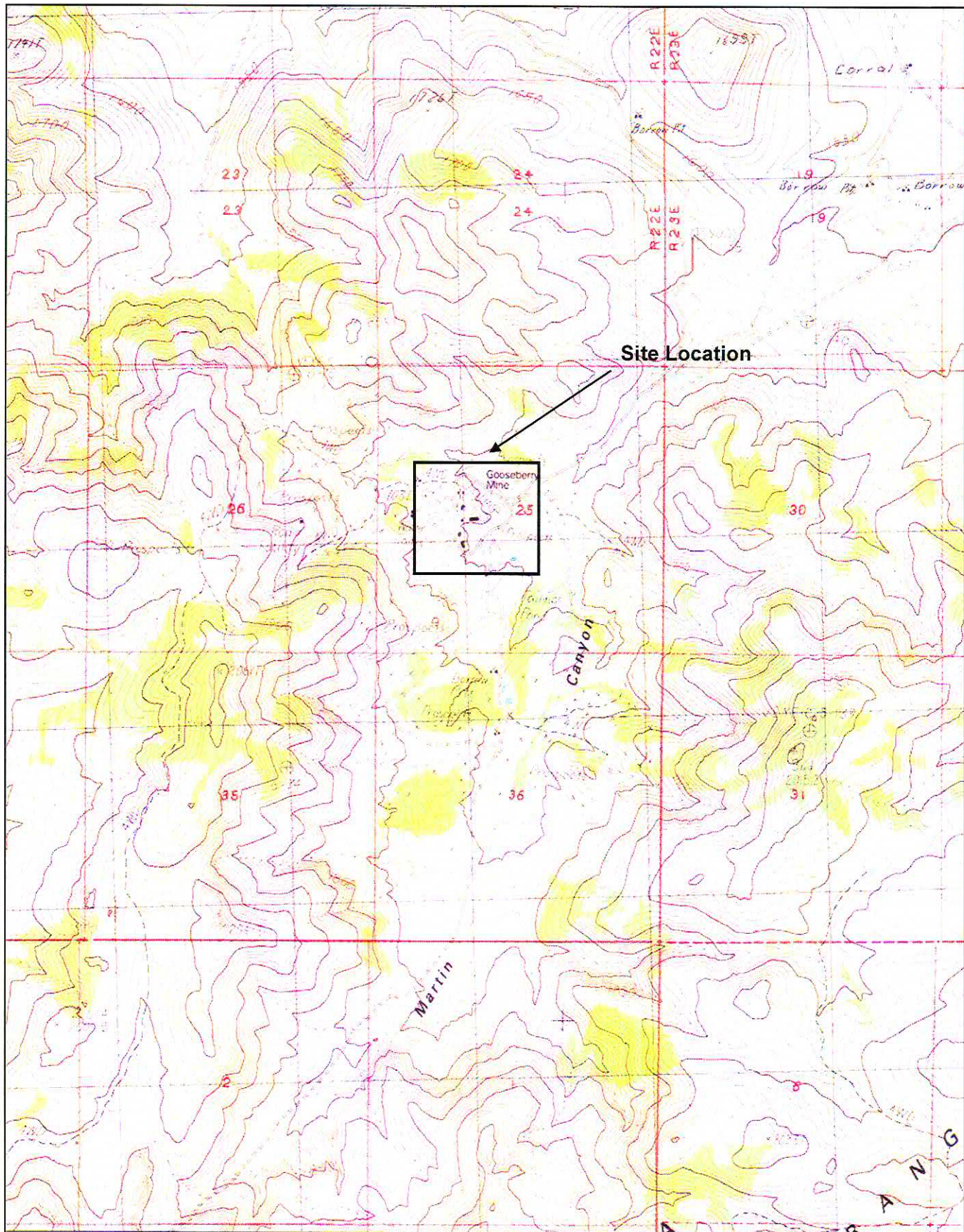


FIGURES



GOOSEBERRY MINE
BROWNFIELDS PROJECT
STOREY COUNTY, NEVADA



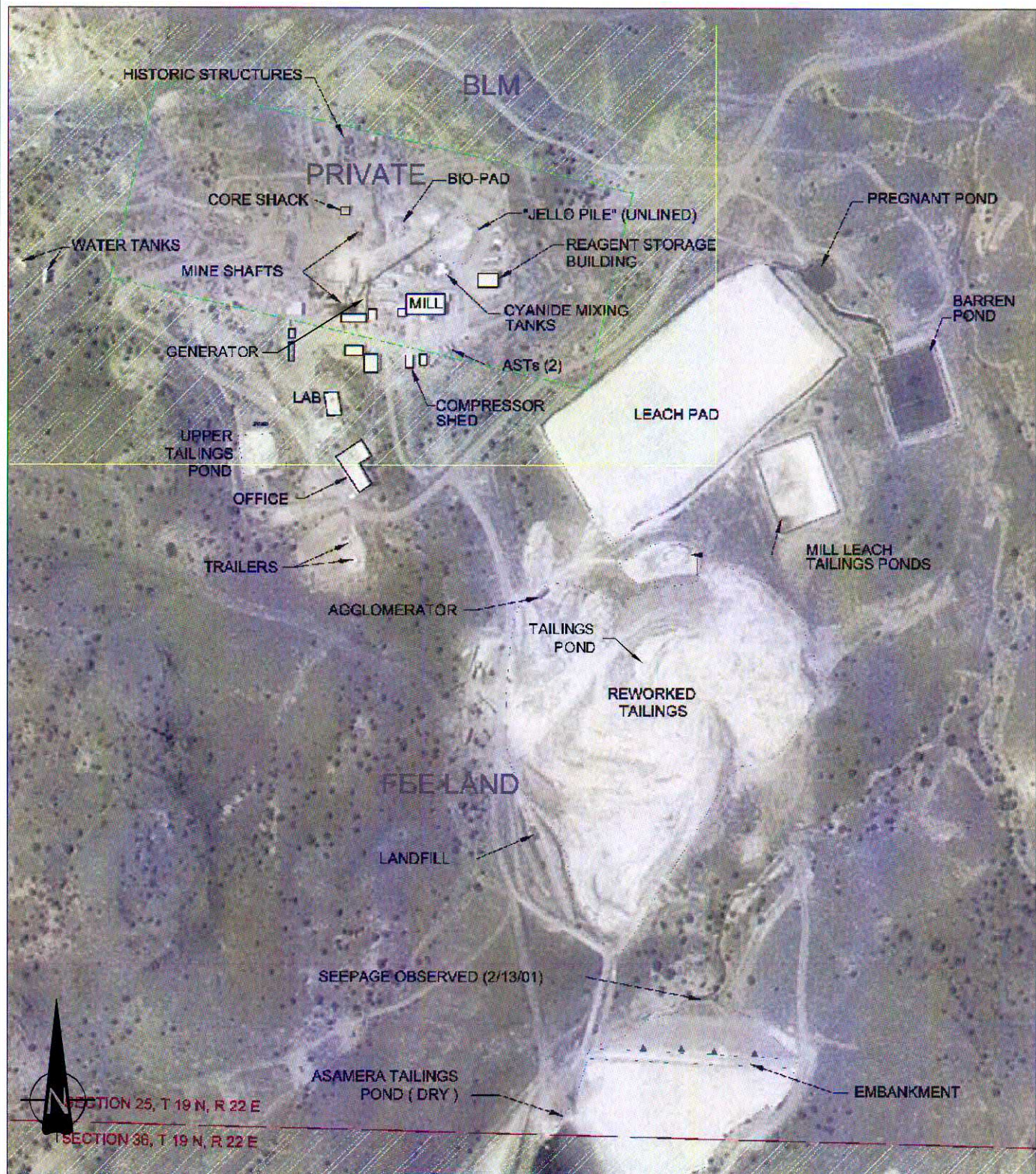
Printed from TOPO! ©2001 National Geographic Holdings (www.topo.com)



780 Vista Blvd, Suite 100
Sparks, Nevada
USA 89433-6656
Tel 1+(775) 331-2375

JOB NO. 6-417-000720
DRAWN dls
DATE 06/2007
SCALE AS INDICATED

FIGURE 1
Vicinity Map
Gooseberry Mine Site
Storey County, Nevada



AMEC Earth & Environmental

780 Vista Boulevard, Suite 100
Sparks, Nevada 89434-6656



CLIENT LOGO

CLIENT

NEVADA DEPARTMENT OF
ENVIRONMENTAL PROTECTION

PROJECT GOOSEBERRY MINE, STOREY CO., NEVADA

DWN BY:
LM-px

DATUM: --

DATE: MARCH 2007

TITLE
SITE MAP

CHK'D BY:
DS-1210

REV. NO.: 1

PROJECT NO.: 7-417-000720

PROJECTION: --

FIGURE No. FIGURE 2