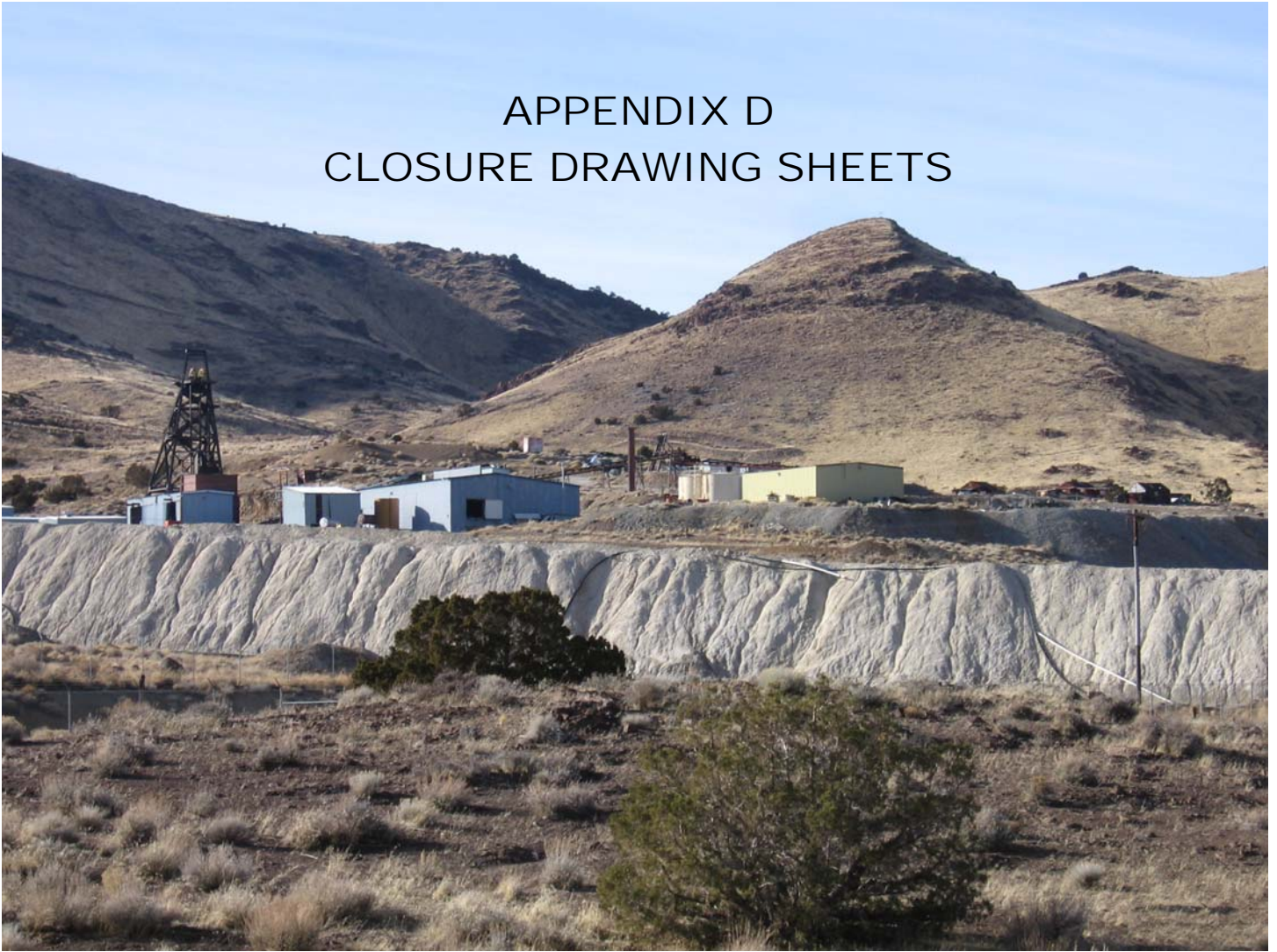
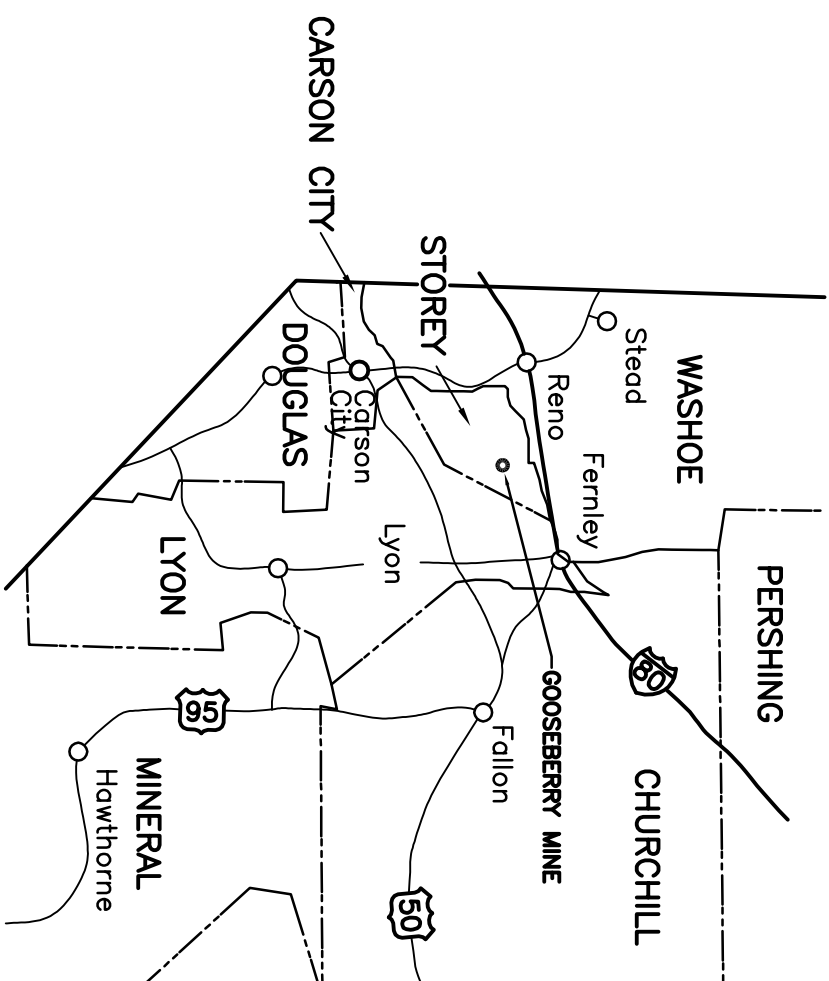
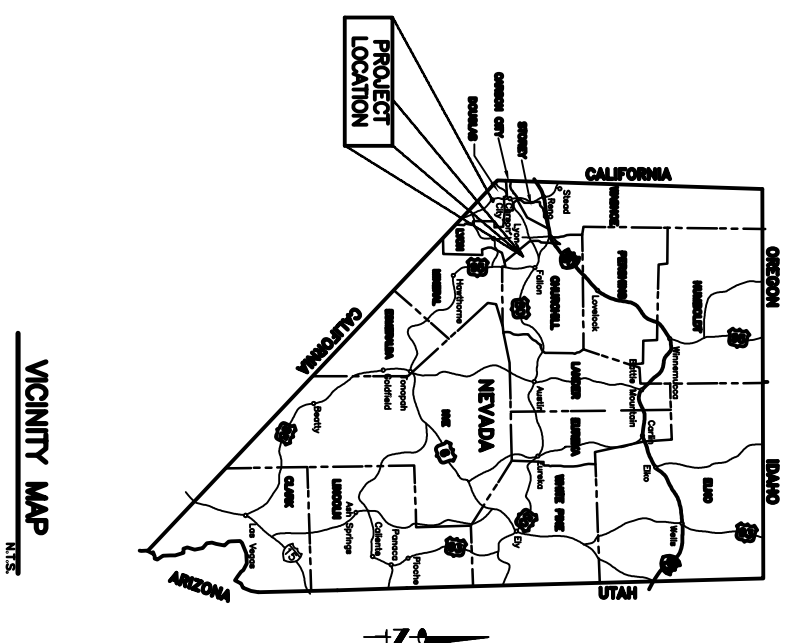


APPENDIX D CLOSURE DRAWING SHEETS



GOOSEBERRY MINE
BROWNFIELDS PROJECT
STOREY COUNTY, NEVADA

**STATE OF NEVADA
DIVISION OF ENVIRONMENTAL PROTECTION
GOOSEBERRY MINE HEAP LEACH PAD & TAILINGS CLOSURE
STOREY COUNTY, NEVADA
NOVEMBER 2007**



| SHEET INDEX | |
|-------------|--|
| 1. | COVER SHEET |
| 2. | SITE PLAN |
| 3. | PRELIMINARY GRADING & UNDER DRAINS |
| 4. | HEAP LEACH PAD & EVAPORATION POND GRADING |
| 5. | ASAMBA TAILING POND GRADING & DRAINAGE DITCH |
| 6. | REWORKED TAILING POND GRADING |
| 7. | DRAINAGE DITCH PROFILE & SECTIONS |
| 8. | DETAIL SHEET |
| 9. | DETAIL SHEET |
| 10. | DETAIL SHEET |

CONTROL 1
N 14848486.64
E 2374971.58
EL. 5492.22

TO USA PKWY
&
I-80

CONTROL 2
N 14847642.35
E 2376396.96
EL. 5386.77

HEAP PAD
LEACH PAD

EAST MILL
TAILINGS

EVAPORATION
POND

SEE SHEET 3&4

CONTROL 3
N 14846877.36
E 2376123.70
EL. 542.30

REWORKED
TAILING POND

CONTROL 4
N 14845873.07
E 2377594.28
EL. 5373.73

SEE SHEET 6

CONTROL 5
N 14845819.98
E 2376922.71
EL. 5457.43

ASAMERA
TAILING POND

CONTROL 6
N 14845181
E 2375885.38
EL. 5560.25

PROPOSED DITCH CL.
SEE SHEET 7

SEE SHEET 5

CONTROL 7
N 14845011.5
E 2377844.45
EL. 5480.25

LEGEND FOR NON-ANNOTATED FEATURES:

- INDEX CONTOUR
APPROXIMATE INDEX
INDEX DEPRESSION
INTERMEDIATE CONTOUR
APPROXIMATE INTERMEDIATE
INTERMEDIATE DEPRESSION
EDGE OF PAVEMENT
DIRT ROAD
JEEP/FOOT TRAIL
CURB LINE
GUTTER/CONCRETE EDGE
GRAVEL/RAIL
RAILROAD
RAILROAD
FENCE
NEW FENCE
RETAINING WALL
FENCE ON RW
BLOCK WALL
MEDIAN WALL
STONE WALL
TRENCH/STOPE
TAILINGS/TOE
PIPELINE
WATER EDGE
INTERMITTENT DRAINAGE
DITCH
MISCELLANEOUS BOUNDARIES
- TREELINE
BRUSHLINE
N.E.Z. CONTROL POINT
Z ONLY CONTROL POINT
SURVEY MONUMENT
POWER POLES
POLE ANCHOR
TRANSMISSION TOWER
LIGHT POLE
POST/POLE
SIGN
FIRE HYDRANT
MANHOLE
VALVE COVER
TRAFFIC SIGNAL
R.R./CROSSWALK SIGNAL
MAIL BOX
MISC. OBJECT
METER
MARSH
PROSPECT/EXCAVATION
SHAFT
UTIL. VAULT/BOX
METER BOX
BUILDING
DECK
COVERED AREA
SHED
BLDG. UNDER CONSTR.
- PROPOSED CONT-INDEX
PROPOSED CONT-INTER
CONTOUR LABEL
BORING LOCATION



SITE PLAN

SCALE: 1"=200'

REVISIONS:



AMEC Infrastructure, Inc.

9450 DOUBLE R BOULEVARD
RENO, NEVADA 89521
PHONE (775) 786-5873
FAX (775) 786-6138

SITE PLAN

GOOSEBERRY MINE
STOREY COUNTY, NEVADA
STOREY COUNTY, NEVADA

PROJECT:

DESIGNER: MPF
DRAWN BY: DTC

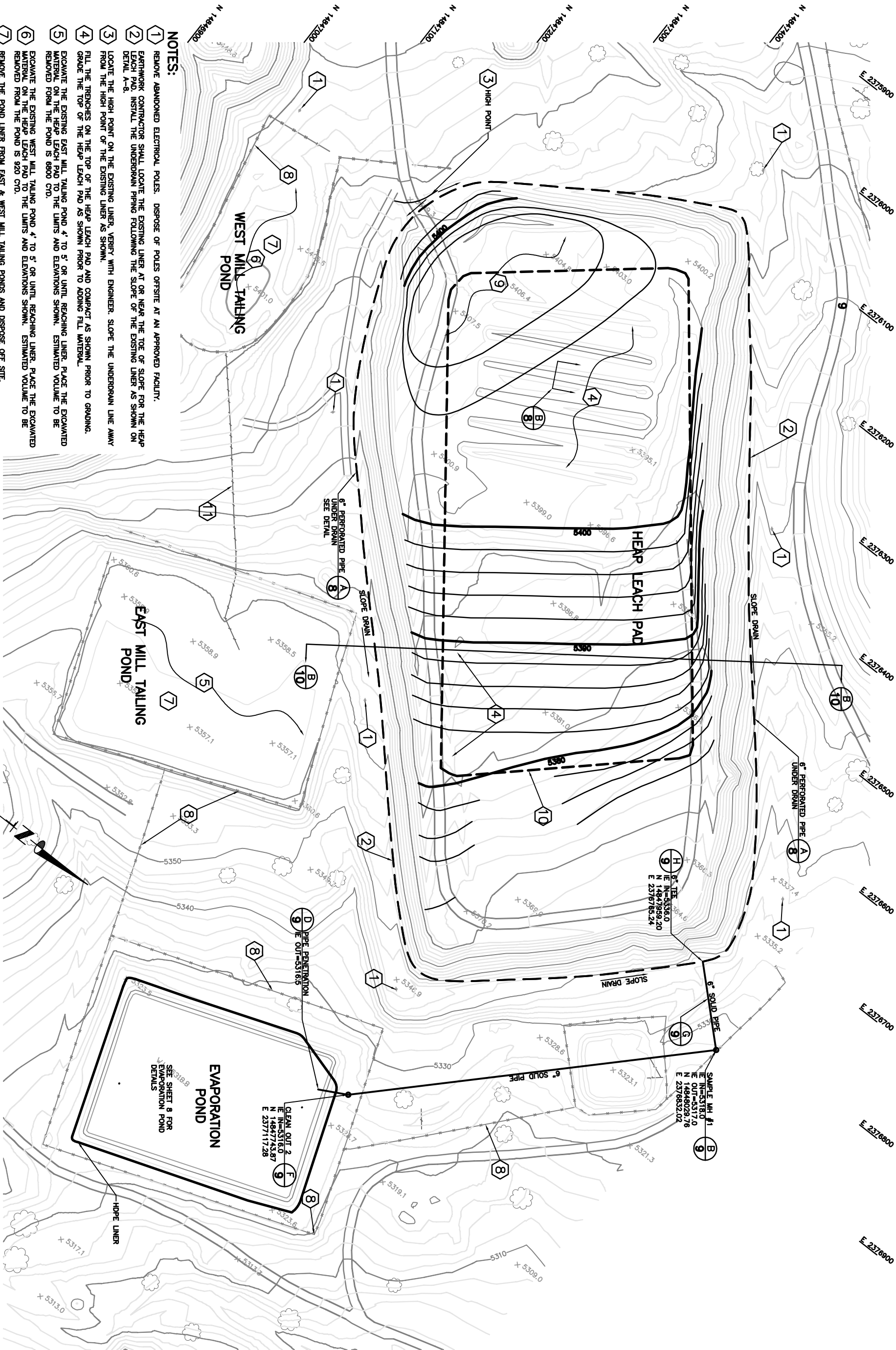


PROJECT NO.
05-2007-005

005-SITE

SHEET NO.

2
of 10



- NOTES:**
- 1 REMOVE ABANDONED ELECTRICAL POLES. DISPOSE OF POLES OFFSITE AT AN APPROVED FACILITY.
 - 2 EARTHWORK CONTRACTOR SHALL LOCATE THE EXISTING LINER AT OR NEAR THE TOE OF SLOPE FOR THE HEAP LEACH PAD. INSTALL THE UNDERDRAIN PIPING FOLLOWING THE SLOPE OF THE EXISTING LINER AS SHOWN ON DETAIL A-8.
 - 3 LOCATE THE HIGH POINT ON THE EXISTING LINER, VERIFY WITH ENGINEER. SLOPE THE UNDERDRAIN LINE AWAY FROM THE HIGH POINT OF THE EXISTING LINER AS SHOWN.
 - 4 FILL THE TRENCHES ON THE TOP OF THE HEAP LEACH PAD AND COMPACT AS SHOWN PRIOR TO GRADING.
 - 5 GRADE THE TOP OF THE HEAP LEACH PAD AS SHOWN PRIOR TO ADDING FILL MATERIAL.
 - 6 EXCAVATE THE EXISTING EAST MILL TAILING POND 4' TO 5' OR UNTIL REACHING LINER. PLACE THE EXCAVATED MATERIAL ON THE HEAP LEACH PAD TO THE LIMITS AND ELEVATIONS SHOWN. ESTIMATED VOLUME TO BE REMOVED FROM THE POND IS 6800 CTO.
 - 7 EXCAVATE THE EXISTING WEST MILL TAILING POND 4' TO 5' OR UNTIL REACHING LINER. PLACE THE EXCAVATED MATERIAL ON THE HEAP LEACH PAD TO THE LIMITS AND ELEVATIONS SHOWN. ESTIMATED VOLUME TO BE REMOVED FROM THE POND IS 920 CTO.
 - 8 REMOVE THE POND LINER FROM EAST & WEST MILL TAILING PONDS AND DISPOSE OFF SITE.
 - 9 REMOVE THE EXISTING FENCE. COORDINATE THE LIMITS OF REMOVAL WITH THE FENCE INSTALLATION SHOWN ON SHEET 4.
 - 10 GRADE THE TALINGS ON THE SOUTHWEST CORNER OF THE HEAP LEACH PAD TO THE ELEVATIONS SHOWN.

- 11 PLACE EXCAVATED MATERIAL FROM THE PONDS WITHIN THE LIMITS SHOWN. PLACE TAILINGS ALONG THE SIDES OF THE POND MATERIAL AS NEEDED TO OBTAIN THE GRADES SHOWN.
- 12 REMOVE THE EXISTING DRAIN PIPE & BACKFILL TRENCH TO GRADE AS REQUIRED.

PRELIMINARY GRADING

SCALE: 1"=50'

PRELIMINARY GRADING
AND UNDER DRAINS

PROJECT:
GOOSEBERRY MINE
STOREY COUNTY, NEVADA
STOREY COUNTY, NEVADA

AMEC Infrastructure, Inc.

9450 DOUBLE R BOULEVARD
RENO, NEVADA 89521
PHONE (775) 786-5873
FAX (775) 786-6138



REVISIONS:

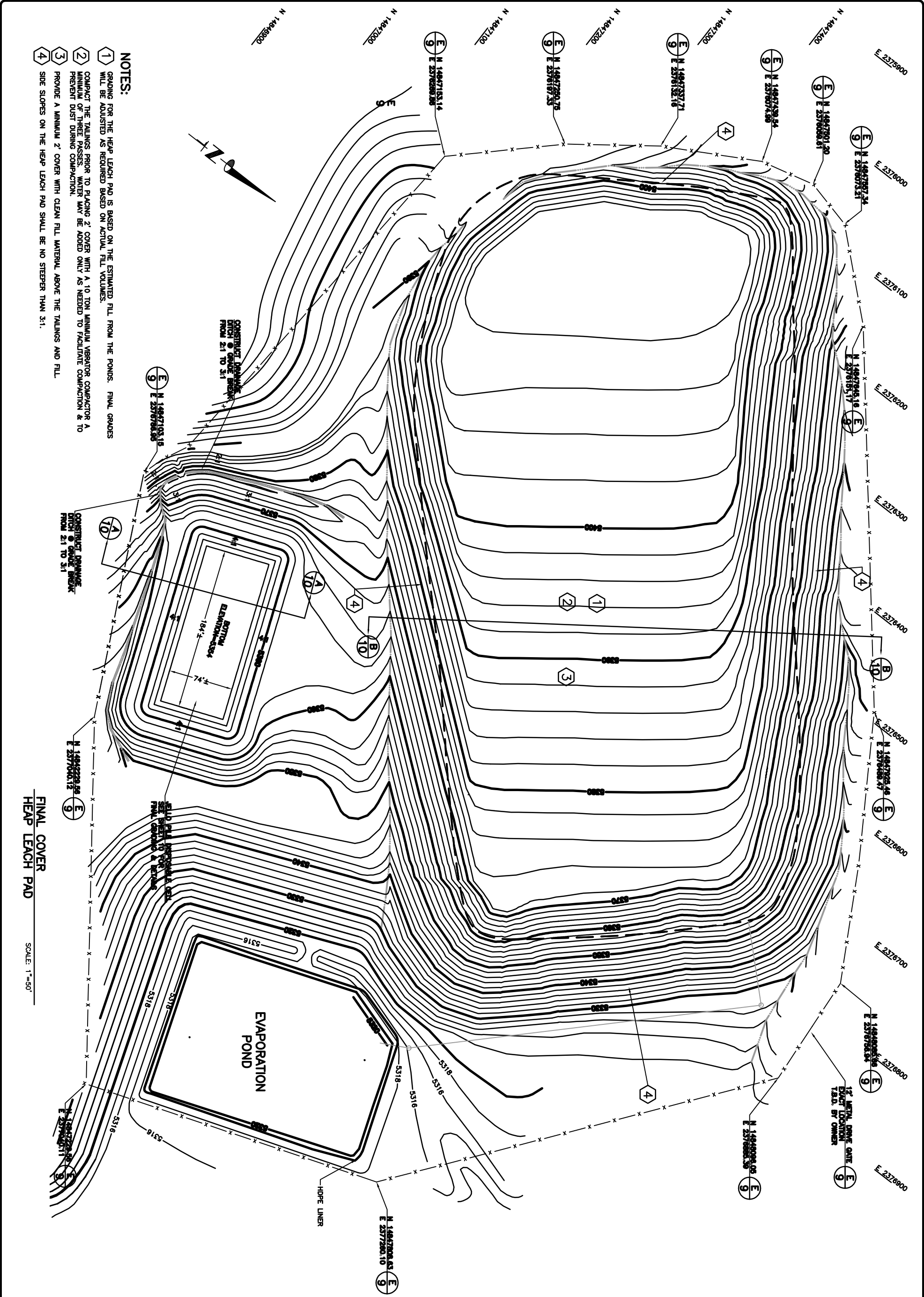


PROJECT NO.
05-2007-005

005-GRD1

SHEET NO.

3
of 10



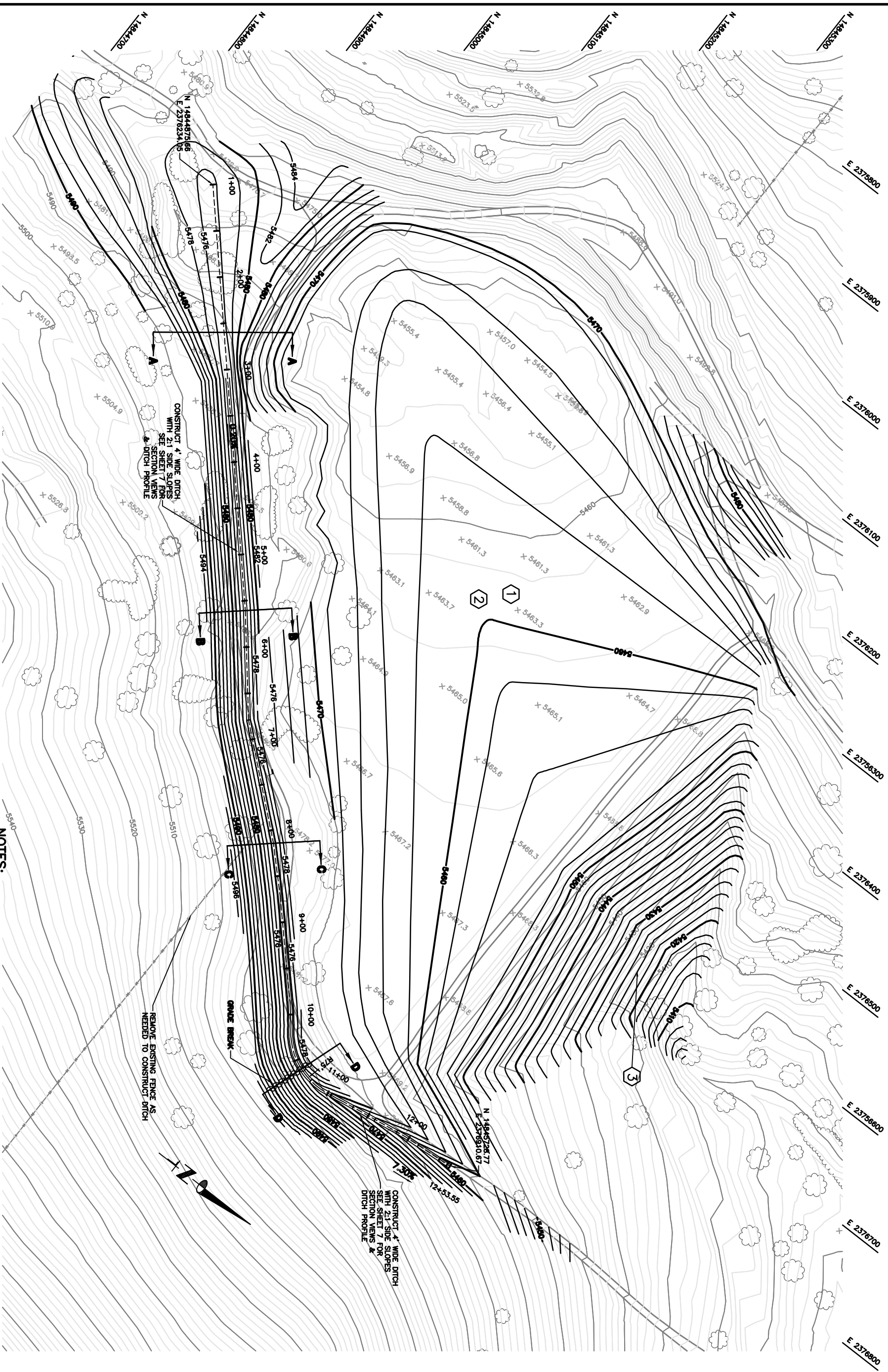
NOTES:

- 1 GRADING FOR THE HEAP LEACH PAD IS BASED ON THE ESTIMATED FILL FROM THE PONDS. FINAL GRADES WILL BE ADJUSTED AS REQUIRED BASED ON ACTUAL FILL VOLUMES.
- 2 COMPACT THE TAILINGS PRIOR TO PLACING 2' COVER WITH A 10 TON MINIMUM VIBRATOR COMPACTOR A MINIMUM OF THREE PASSES. WATER MAY BE ADDED ONLY AS NEEDED TO FACILITATE COMPACTION & TO PREVENT DUST DURING COMPACTION.
- 3 PROVIDE A MINIMUM 2' COVER WITH CLEAN FILL MATERIAL ABOVE THE TAILINGS AND FILL.
- 4 SIDE SLOPES ON THE HEAP LEACH PAD SHALL BE NO STEEPER THAN 3:1.

FINAL COVER
HEAP LEACH PAD

SCALE: 1"=50'

| | | | | | | |
|----------------------------|--|--------------------------------|--|--|--|------------|
| | | DESIGNER: MPT DRAWN BY: DTC | PROJECT: GOOSEBERRY MINE STOREY COUNTY, NEVADA STOREY COUNTY, NEVADA | AMEC Infrastructure, Inc. 9450 DOUBLE R BOULEVARD RENO, NEVADA 89521 PHONE (775) 786-5873 FAX (775) 786-6138 | | REVISIONS: |
| PROJECT NO. 05-2007-005 | | | | | | |
| 005-GRD2 | | | | | | |
| SHEET NO. 4 | | | | | | |
| of 10 | | | | | | |



ASAMERA TAILING POND
& NEW DRAINAGE DITCH

SCALE: 1"=50'

NOTES:

- 1 GRADING SHOWN IS FOR FINISHED GRADE. CONTRACTOR SHALL GRADE THE TAILING TO AT LEAST 2' BELOW THE ELEVATIONS SHOWN.
- 2 PLACE FILL IN THE POND IN 1' FOOT MAXIMUM LIFTS, COMPACTED TO 85% MAXIMUM UNIT WEIGHT TO 1' FOOT BELOW THE FINAL ELEVATION SHOWN.
- 3 SLOPE ON REGRADED DAM SHALL BE NO GREATER THAN 3:1

ASAMERA TAILING POND GRADING &
DRAINAGE DITCH

PROJECT: **GOOSEBERRY MINE**
STOREY COUNTY, NEVADA
STOREY COUNTY, NEVADA

AMEC Infrastructure, Inc.

9450 DOUBLE R BOULEVARD
RENO, NEVADA 89521
PHONE (775) 786-5873
FAX (775) 786-6138



REVISIONS:

| |
|--|
| |
| |
| |
| |
| |



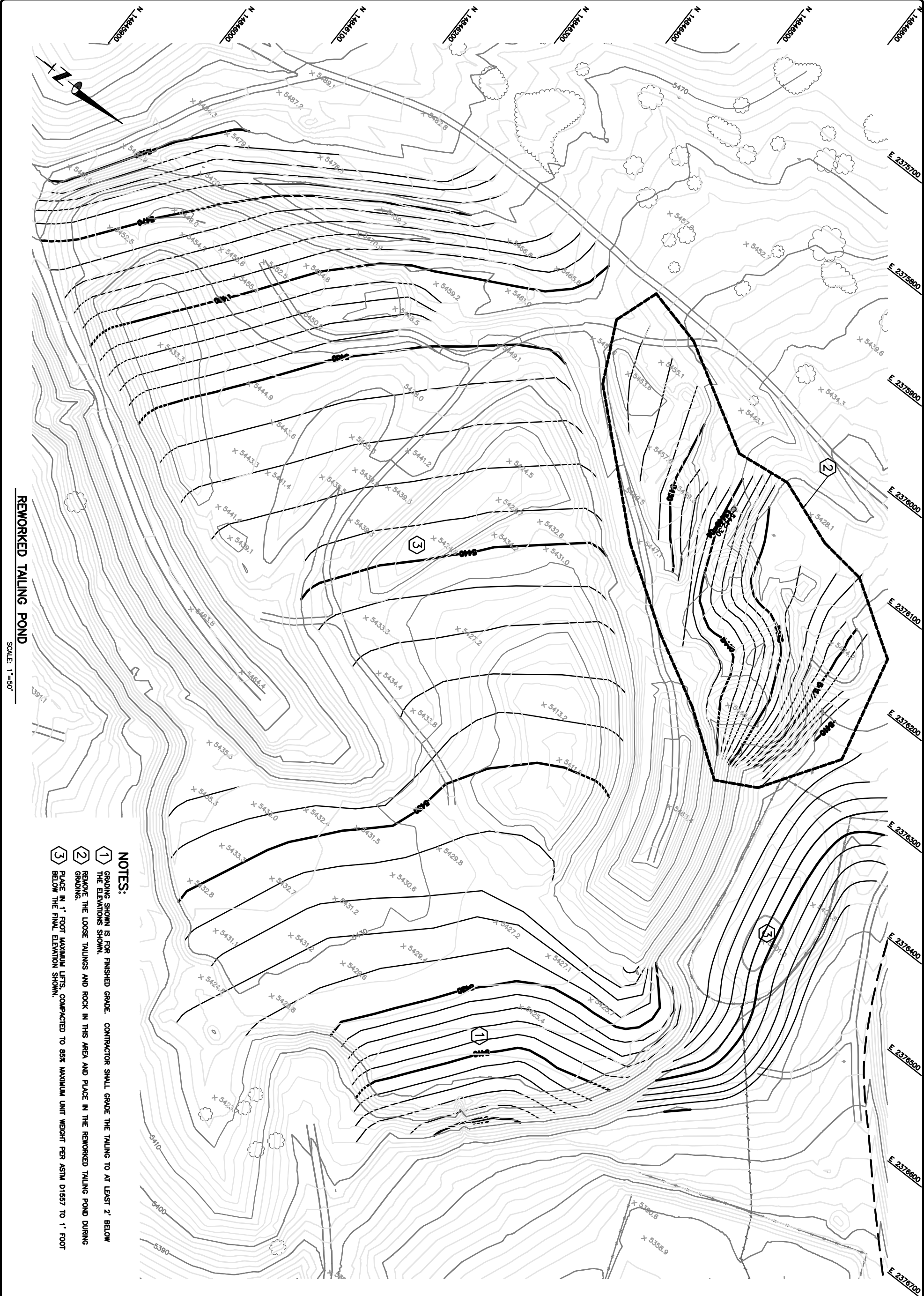
PROJECT NO.
05-2007-005

006-GRD3

SHEET NO.

5

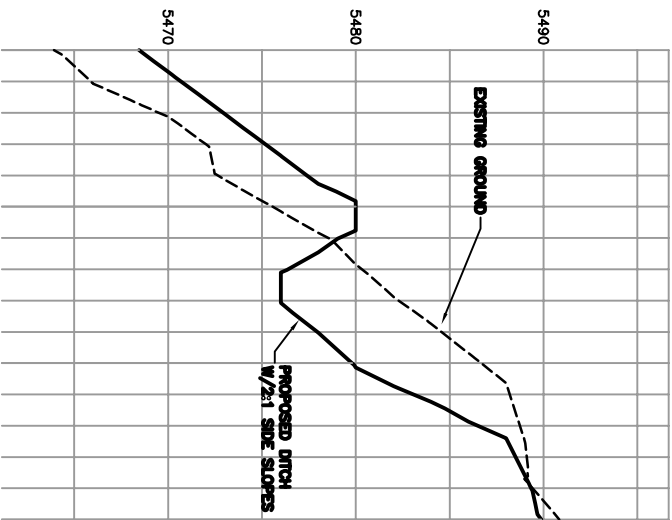
of 10



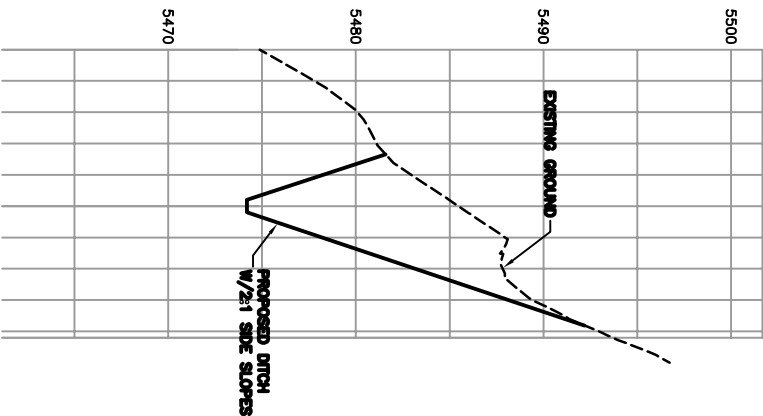
- NOTES:**
- 1 GRADING SHOWN IS FOR FINISHED GRADE. CONTRACTOR SHALL GRADE THE TAILING TO AT LEAST 2' BELOW THE ELEVATIONS SHOWN.
 - 2 REMOVE THE LOOSE TAILINGS AND ROCK IN THIS AREA AND PLACE IN THE REMORKED TAILING POND DURING GRADING.
 - 3 PLACE IN 1' FOOT MAXIMUM LIFTS COMPACTED TO 85% MAXIMUM UNIT WEIGHT PER ASTM D1557 TO 1' FOOT BELOW THE FINAL ELEVATION SHOWN.

REWORKED TAILING POND
SCALE: 1"=50'

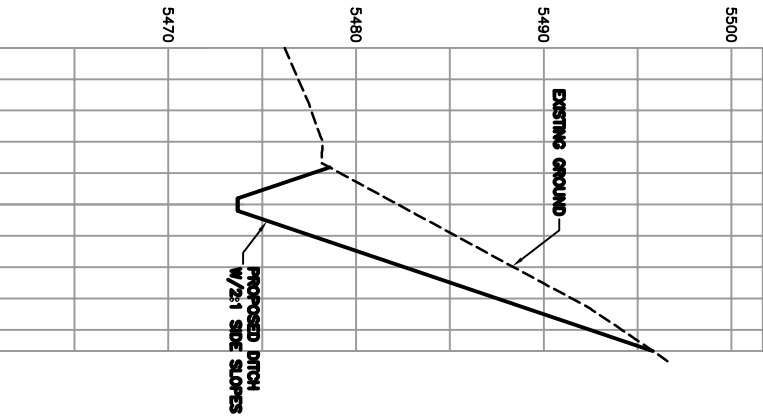
| | | | | | | | |
|----------------------------|-------------------------|--|--------------------------------|---|--|--|------------|
| PROJECT NO. 05-2007-005 | SHEET NO. 6 of 10 | | REWORKED TAILING POND GRADING | | AMEC Infrastructure, Inc. 9450 DOUBLE R BOULEVARD RENO, NEVADA 89521 PHONE (775) 786-5873 FAX (775) 786-6138 | | REVISIONS: |
| | | | DESIGNER: MPF DRAWN BY: DTC | PROJECT: GOOSEBERRY MINE STOREY COUNTY, NEVADA STOREY COUNTY, NEVADA | | | |



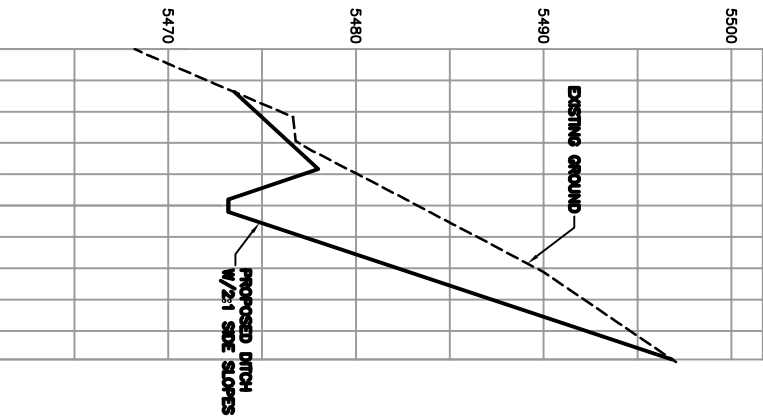
SECTION VIEW A-A
STA: 2+59.71
SCALE: HOR. 1"=30'
VERTICAL 1"=5'



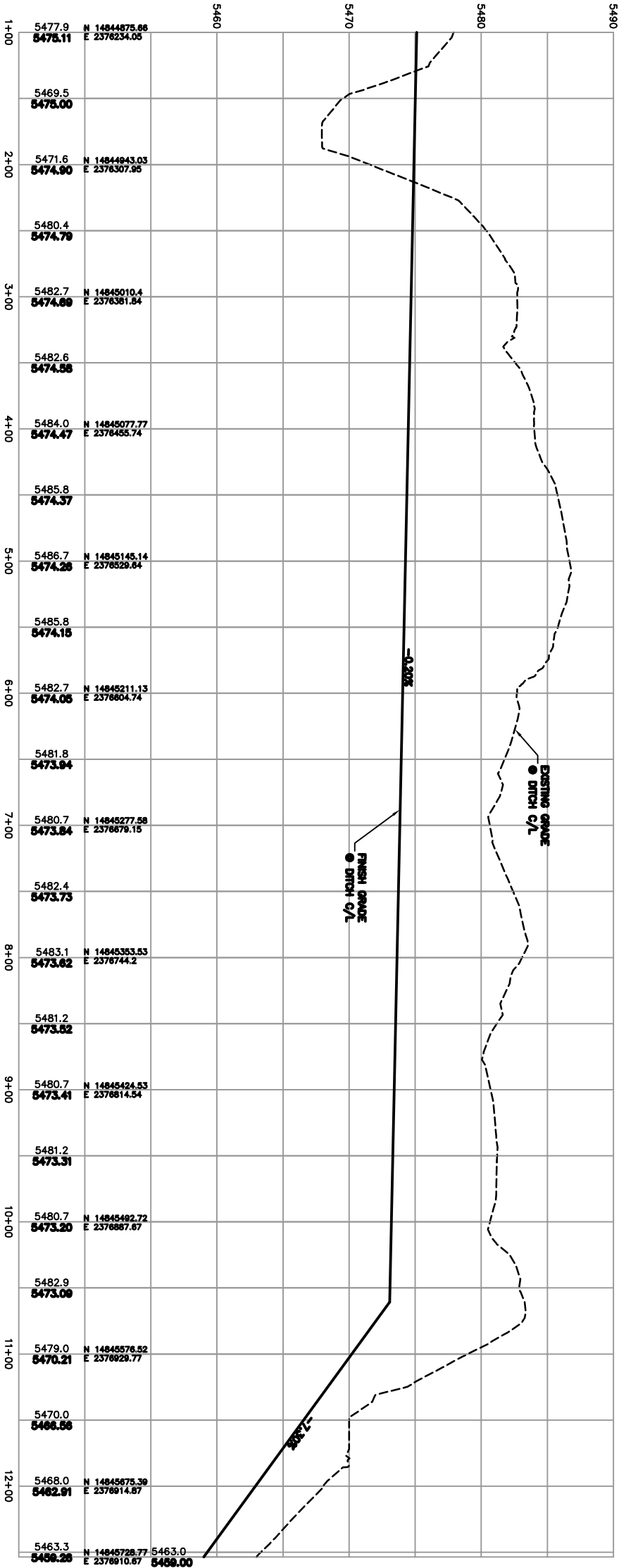
SECTION VIEW B-B
STA: 5+60.63
SCALE: HOR. 1"=30'
VERTICAL 1"=5'



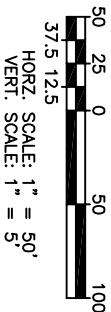
SECTION VIEW C-C
STA: 8+14.34
SCALE: HOR. 1"=30'
VERTICAL 1"=5'



SECTION VIEW D-D
STA: 10+60.76
SCALE: HOR. 1"=30'
VERTICAL 1"=5'



DITCH C/L PROFILE VIEW



DRAINAGE DITCH PROFILE & SECTIONS

PROJECT: **GOOSEBERRY MINE**
STOREY COUNTY, NEVADA
STOREY COUNTY, NEVADA

AMEC Infrastructure, Inc.

9450 DOUBLE R BOULEVARD
RENO, NEVADA 89521
PHONE (775) 786-5873
FAX (775) 786-6138



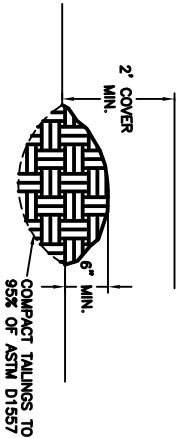
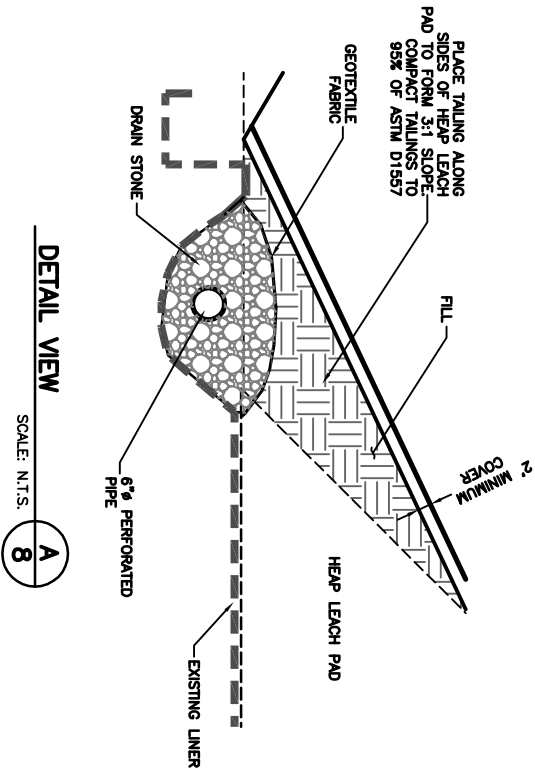
REVISIONS:



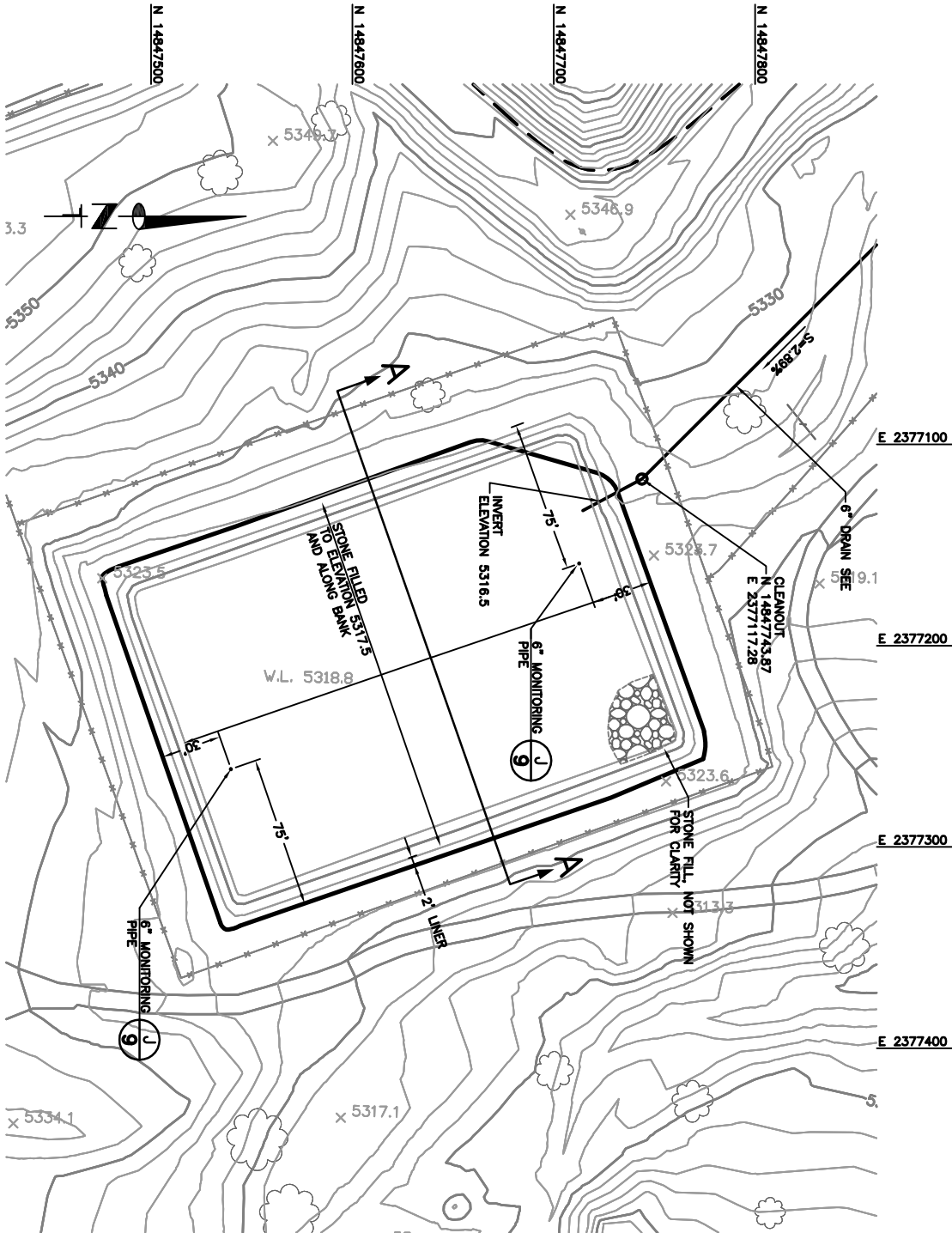
PROJECT NO.
05-2007-005

SHEET NO.
005-PRO1

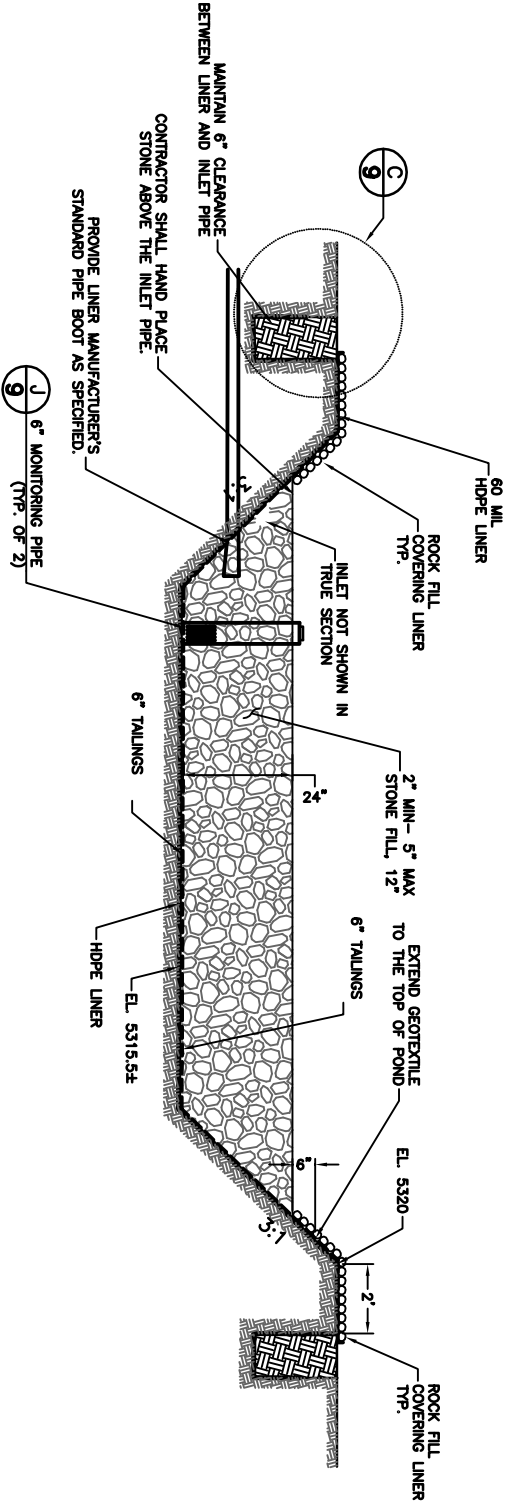
of 10
7



SECTION VIEW
TYPICAL FOR ALL TRENCHES
SCALE: N.T.S.
B
8



EVAPORATION POND DETAILS
SCALE: 1"=40'



SECTION VIEW A-A
(WITH PIPING PENETRATION SHOWN)
SCALE: N.T.S.

| REVISIONS: |
|------------|
| |
| |
| |
| |



AMEC Infrastructure, Inc.
9450 DOUBLE R BOULEVARD
RENO, NEVADA 89521
PHONE (775) 786-5873
FAX (775) 786-6138

PROJECT: **GOOSEBERRY MINE**
STOREY COUNTY, NEVADA
STOREY COUNTY, NEVADA

DESIGNER: MPF
DRAWN BY: DTC

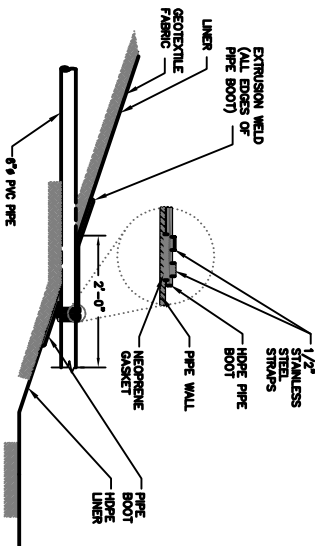
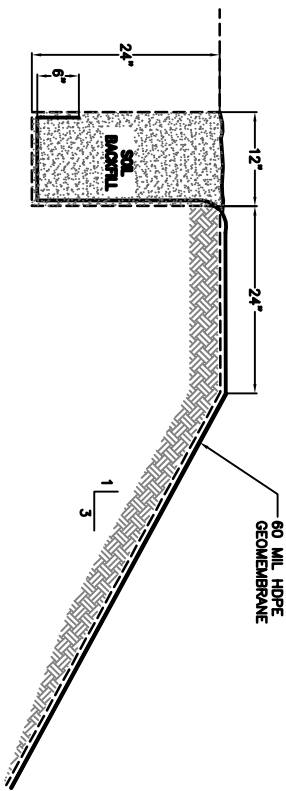
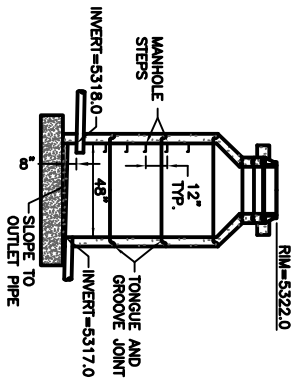


PROJECT NO.
05-2007-005

005-DT01

SHEET NO.

8
of 10



SAMPLE MANHOLE #1

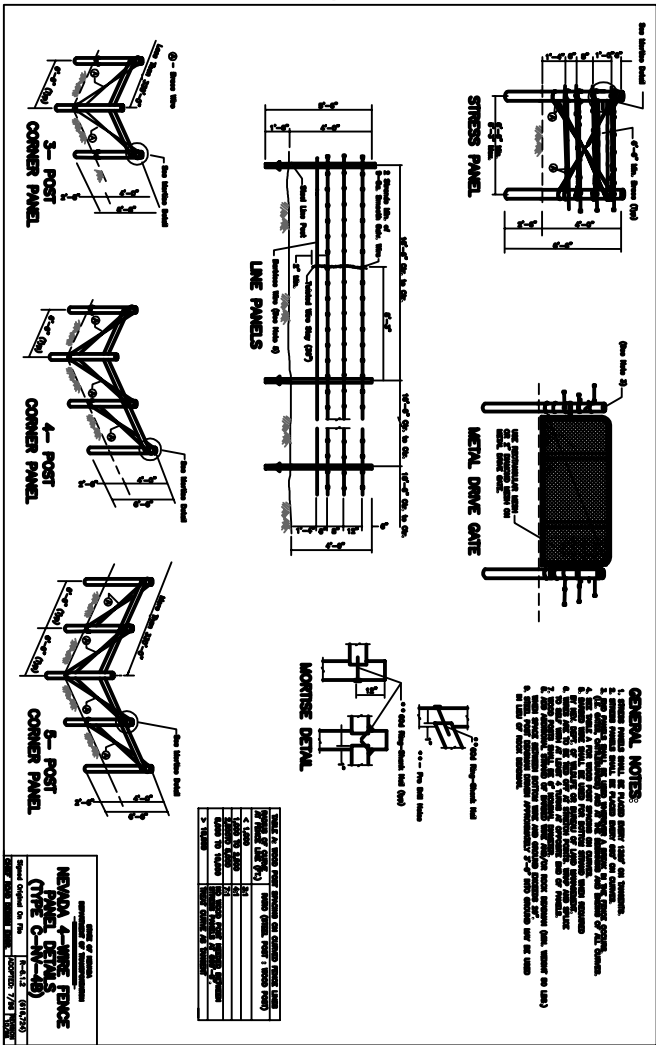
N.T.S. 9

HDPE LINER ANCHOR TRENCH

N.T.S. 9

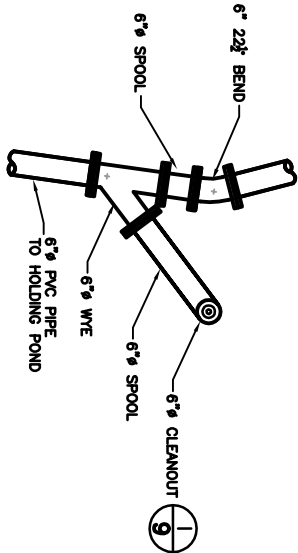
PIPE PENETRATION

N.T.S. 9



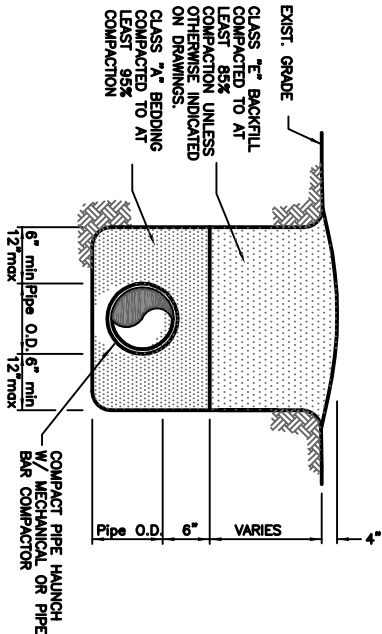
CLEANOUT

PLAN VIEW N.T.S. 9



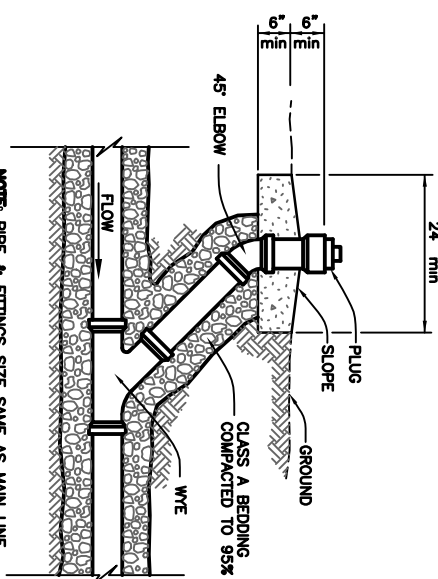
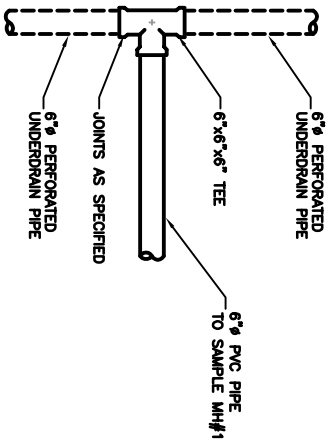
PIPE TRENCH

N.T.S. 9



FIELD FENCE

N.T.S. 9



NOTE: PIPE & FITTINGS SIZE SAME AS MAIN LINE

TE IN TO UNDERDRAIN

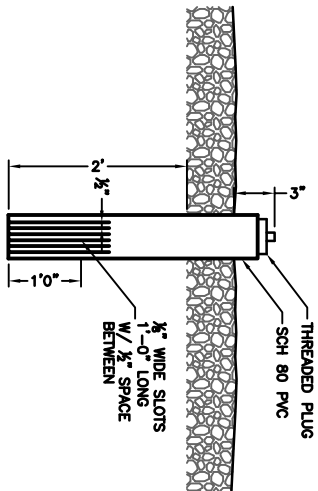
N.T.S. 9

CLEANOUT DETAIL

N.T.S. 9

6" MORTAR PIPE

N.T.S. 9



| REVISIONS: | |
|------------|--|
| | |
| | |
| | |
| | |



AMEC Infrastructure, Inc.
9450 DOUBLE R BOULEVARD
RENO, NEVADA 89521
PHONE (775) 786-5873
FAX (775) 786-6138

PROJECT: **GOOSEBERRY MINE**
STOREY COUNTY, NEVADA
STOREY COUNTY, NEVADA

DETAIL SHEET

DESIGNER: MPF
DRAWN BY: DTC



PROJECT NO.
05-2007-005

005-DT02

SHEET NO.

9
of 10

