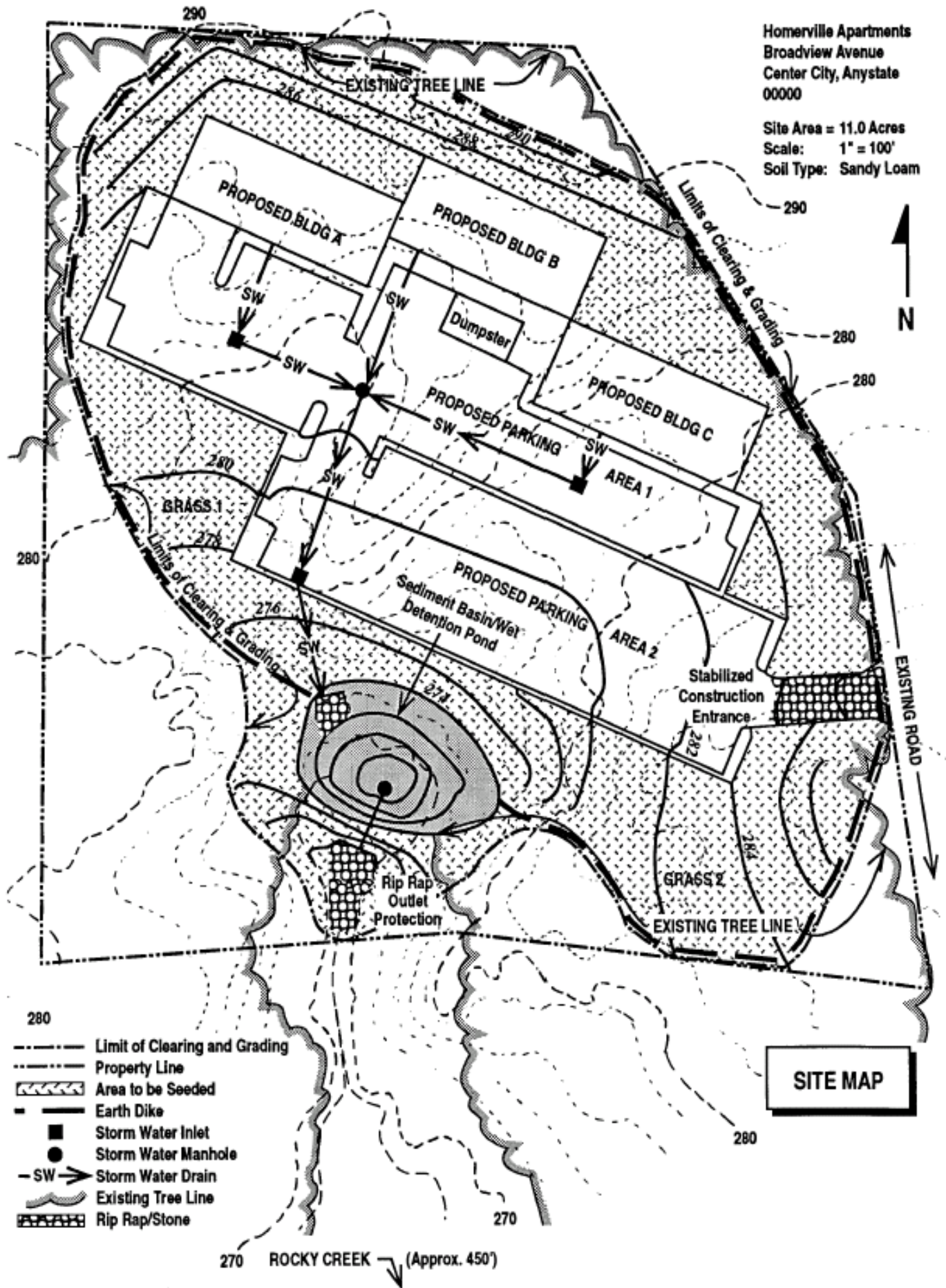


Homerville Apartments  
 Broadview Avenue  
 Center City, Anystate  
 00000

Site Area = 11.0 Acres  
 Scale: 1" = 100'  
 Soil Type: Sandy Loam



- 280 --- Limit of Clearing and Grading
- Property Line
- ▨ Area to be Seeded
- Earth Dike
- Storm Water Inlet
- Storm Water Manhole
- SW → Storm Water Drain
- ~ Existing Tree Line
- ▨ Rip Rap/Stone

**SITE MAP**

270 ROCKY CREEK (Approx. 450')