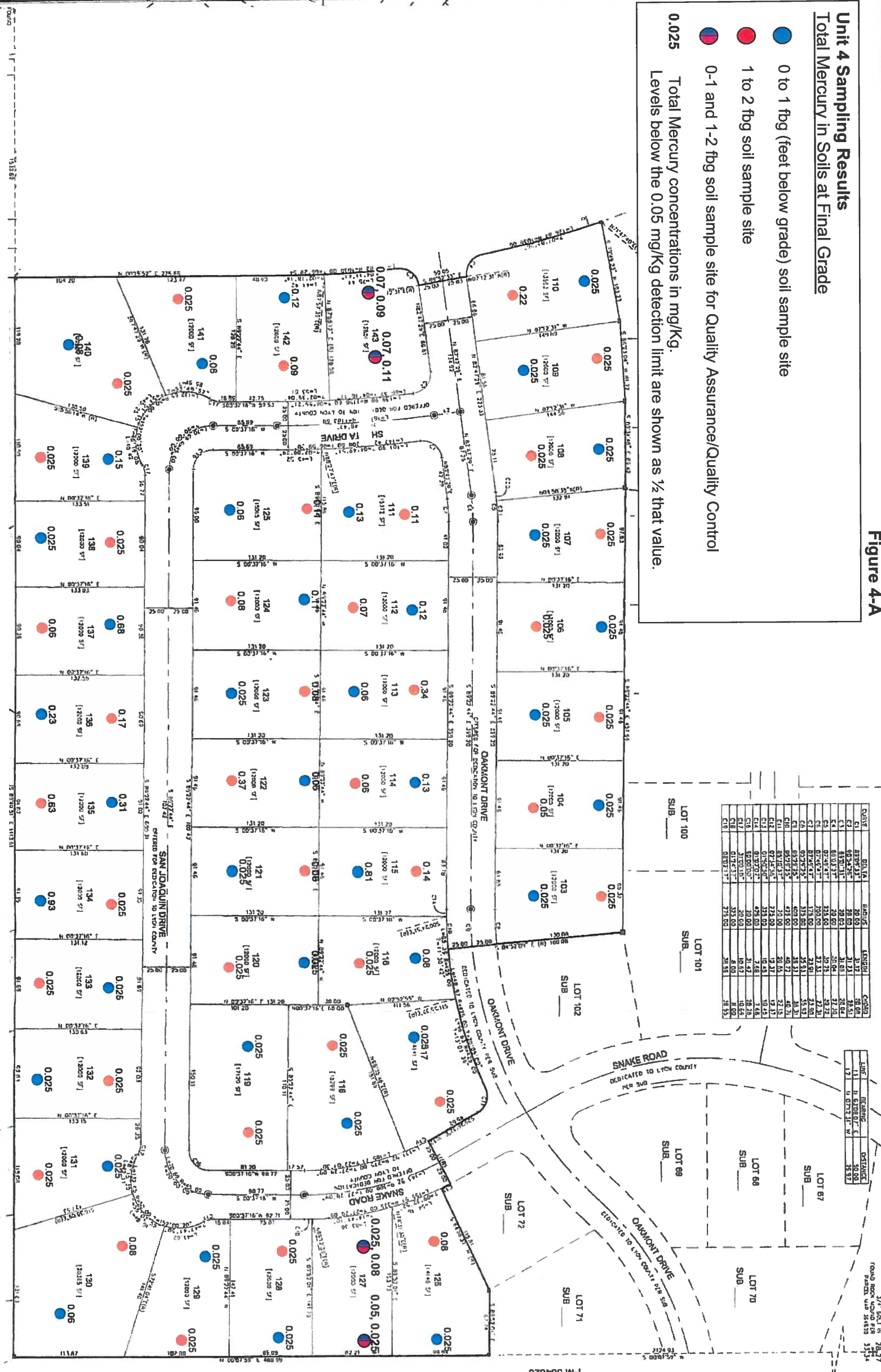


Figure 4A

Unit 4 Sampling Results
Total Mercury in Soils at Final Grade

- 0 to 1 fbg (feet below grade) soil sample site
 - 1 to 2 fbg soil sample site
 - 0-1 and 1-2 fbg soil sample site for Quality Assurance/Quality Control
- 0.025 Total Mercury concentrations in mg/Kg.
 Levels below the 0.05 mg/Kg detection limit are shown as 1/2 that value.

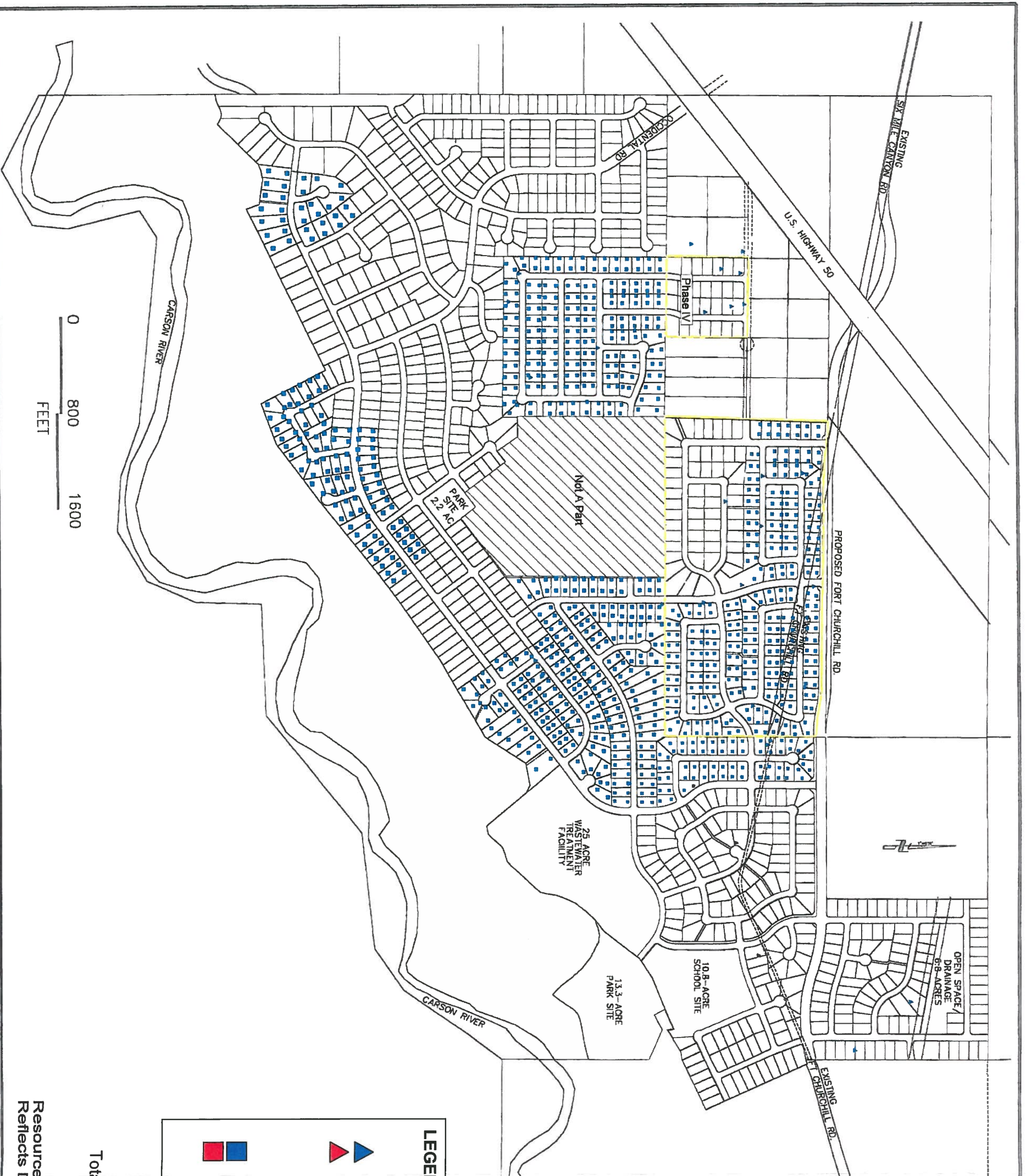


Summitt base map was modified on 27 November 2006 by Resource Concepts, Inc. for the purposes of this report.
 Sample site locations are approximate relative to lot lines in this figure.

OFFICIAL PLAT
 OF
 RIVERPARK
 PHASE 4 ~ UNIT 4
 A DIVISION OF PARCEL B OF SUB
 SITUATED WITHIN THE NORTHEAST QUARTER OF SECTION 13,
 TOWNSHIP 17 NORTH, RANGE 27 EAST, 40N
 LYON COUNTY
 NEVADA

Summitt
 ENGINEERING
 CORPORATION

DAYTON
 2
 2



LEGEND

Surface Sample

- ▲ <80mg/Kg mercury
- ▲ >80mg/Kg mercury

Final Grade Sample

- 0-1 and 1-2 feet below grade
- <80mg/Kg mercury
- Lots Requiring Remedial Action (>80mg/Kg mercury)

Figure 4-B
 Riverpark Subdivision
 Total Mercury Sampling, Cumulative Coverage
 Units in mg/Kg

Resource Concepts, Inc.
 Reflects Data Collected Through November 29, 2006