

Table 1-A
Summary of Unit 1 Testing for Total Mercury in Soils
Riverpark Subdivision, Dayton, Nevada

0-1fbg				1-2fbg																							
Lot Number	Total Mercury (mg/Kg)	Lot Number	Total Mercury (mg/Kg)	Lot Number	Total Mercury (mg/Kg)	Lot Number	Total Mercury (mg/Kg)																				
1-1-1	0.84	1-27-1	0.025	1-1-2	0.07	1-27-2	0.21																				
1-2-1	0.14	1-28-1	0.20	1-2-2	1.19	1-28-2	0.11																				
1-3-1	0.76	1-29-1	0.025	1-3-2	0.07	1-29-2	0.07																				
1-4-1	0.78	1-30-1	0.16	1-4-2	1.13	1-30-2	0.07																				
1-5-1	0.10	1-31-1	0.24	1-5-2	0.06	1-31-2	0.15																				
1-6-1	0.19	1-32-1	0.15	1-6-2	0.13	1-32-2	0.26																				
1-7-1	0.025	1-33-1	0.37	1-7-2	0.025	1-33-2	1.25																				
1-8-1	0.21	1-34-1	0.89	1-8-2	0.025	1-34-2	0.16																				
1-9-1	0.17	1-35-1	0.19	1-9-2	0.22	1-35-2	1.24																				
1-10-1	0.025	1-36-1	1.12	1-10-2	0.05	1-36-2	0.20																				
1-11-1	0.24	1-37-1	0.24	1-11-2	0.09	1-37-2	0.64																				
1-12-1	0.025	1-38-1	0.29	1-12-2	0.025	1-38-2	0.40																				
1-13-1	0.025	1-39-1	0.55	1-13-2	0.025	1-39-2	0.36																				
1-14-1	0.05	1-40-1	0.74	1-14-2	0.025	1-40-2	0.46																				
1-15-1	0.025	1-41-1	0.29	1-15-2	0.025	1-41-2	1.05																				
1-16-1	0.025	1-42-1	0.87	1-16-2	0.025	1-42-2	0.41																				
1-17-1	0.44	1-43-1	0.41	1-17-2	0.025	1-43-2	1.09																				
1-18-1	0.19	1-44-1	0.52	1-18-2	0.20	1-44-2	0.68																				
1-19-1	0.025	1-45-1	0.12	1-19-2	0.06	1-45-2	0.53																				
1-20-1	0.34	1-46-1 (Front)	0.025	1-20-2	0.16	1-46-2 (Front)	0.44																				
1-21-1	0.10	1-46-1 (Back)	0.30	1-21-2	0.27	1-46-2 (Back)	0.11																				
1-22-1 (Front)	0.10	1-47-1	0.12	1-22-2 (Front)	0.13	1-47-2	0.07																				
1-22-1 (Back)	0.17	1-48-1	0.45	1-22-2 (Back)	0.18	1-48-2	0.025																				
1-23-1	0.025	1-49-1	0.025	1-23-2	0.09	1-49-2	0.025																				
1-24-1	0.17	1-50-1	0.025	1-24-2	0.15	1-50-2	0.025																				
1-25-1	0.53	1-51-1	0.025	1-25-2	0.16	1-51-2	0.025																				
1-26-1	0.18	1-14-AUX	0.025	1-26-2	0.05																						
<table border="1"> <tr><td>n=</td><td>54</td></tr> <tr><td>Minimum value</td><td>0.025</td></tr> <tr><td>Maximum value</td><td>1.1</td></tr> <tr><td>Mean value</td><td>0.26</td></tr> <tr><td>Median value</td><td>0.18</td></tr> </table>				n=	54	Minimum value	0.025	Maximum value	1.1	Mean value	0.26	Median value	0.18	<table border="1"> <tr><td>n=</td><td>53</td></tr> <tr><td>Minimum value</td><td>0.025</td></tr> <tr><td>Maximum value</td><td>1.3</td></tr> <tr><td>Mean value</td><td>0.28</td></tr> <tr><td>Median value</td><td>0.13</td></tr> </table>				n=	53	Minimum value	0.025	Maximum value	1.3	Mean value	0.28	Median value	0.13
n=	54																										
Minimum value	0.025																										
Maximum value	1.1																										
Mean value	0.26																										
Median value	0.18																										
n=	53																										
Minimum value	0.025																										
Maximum value	1.3																										
Mean value	0.28																										
Median value	0.13																										

- Notes:
1. Values below the 0.05mg/Kg detection limit are reported here as ½ that value.
 2. "F" and "B" denote the front and back of those lots where samples were taken at the 1- and 2-foot levels at both sample locations for quality control purposes.
 3. "AUX" denotes an auxiliary surface sample taken in response to localized soil discoloration noted in the field.

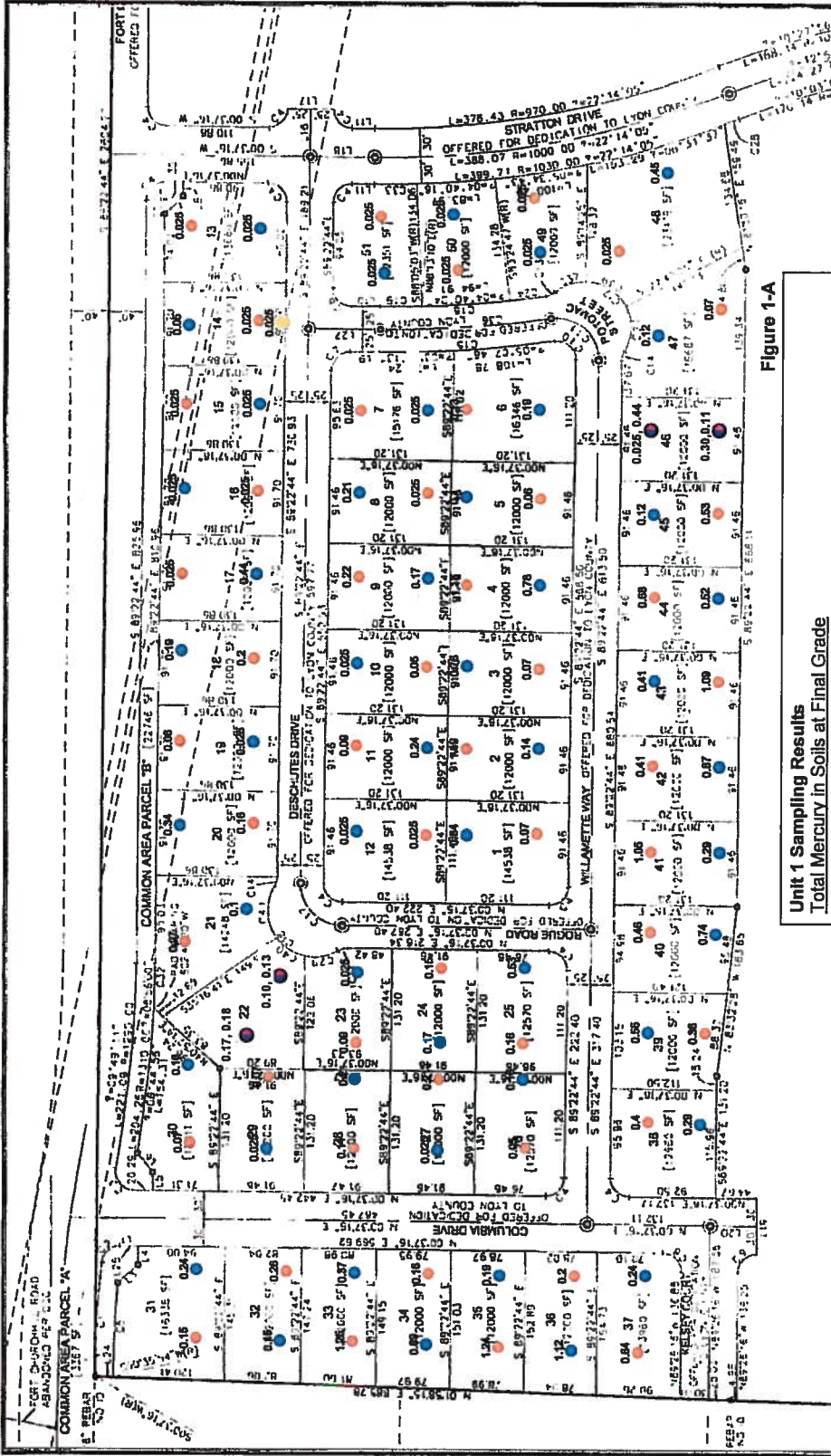


Figure 1-A

Unit 1 Sampling Results
Total Mercury in Soils at Final Grade

- 0 to 1 fbg (feet below grade) soil sample site
- 1 to 2 fbg soil sample site
- 0-1 and 1-2 fbg soil sample site for Quality Assurance/Quality Control
- Supplemental surface sample

0.025 Total Mercury concentrations in mg/Kg.
 Levels below the 0.05 mg/Kg detection limit are shown as ½ that value.

OFFICIAL PLAT
 RIVERPARK
 PHASE 4 - UNIT 1
 9 JUNE 2006
 1. 2. 3. 4. 5. 6. 7. 8. 9. 10. 11. 12. 13. 14. 15. 16. 17. 18. 19. 20. 21. 22. 23. 24. 25. 26. 27. 28. 29. 30. 31. 32. 33. 34. 35. 36. 37. 38. 39. 40. 41. 42. 43. 44. 45. 46. 47. 48. 49. 50. 51. 52. 53. 54. 55. 56. 57. 58. 59. 60. 61. 62. 63. 64. 65. 66. 67. 68. 69. 70. 71. 72. 73. 74. 75. 76. 77. 78. 79. 80. 81. 82. 83. 84. 85. 86. 87. 88. 89. 90. 91. 92. 93. 94. 95. 96. 97. 98. 99. 100.
 DATE: 6/20/06
 DRAWN BY: J. W. HARRIS
 CHECKED BY: J. W. HARRIS
 SCALE: AS SHOWN

SUMMIT
 ENGINEERING
 1000 S. W. 10TH AVE., SUITE 200
 BOCA RATON, FL 33432
 TEL: 561-993-8800
 FAX: 561-993-8801
 WWW.SUMMIT-ENGINEERING.COM

PLAT NO. 2
 SHEET 2

Summit base map was modified on 8 October 2006 by Resource Concepts, Inc. for the purposes of this report.
 Sample site locations are approximate relative to lot lines in this figure.

