



## Appendix F – Wetland Planting Plan













**KEY MAP**

**NOTES:**

1. SEE C&G SHEET FOR SITE LEGEND.
2. SEE C&G SHEETS FOR DUCK CREEK GRADING.
3. SEE C&G SHEETS FOR SITE GRADING.
4. SEE P&S SHEETS FOR PERMANENT STABILIZATION PLANS.

**CONSTRUCTION ITEMS:**

1. INSTALL UPLAND TREES AND SHRUBS (SEE DETAILS 1 & 2, LP-14) AND SHEET LP-15 FOR TYPICAL PLANT LAYOUTS.
2. INSTALL WETLAND EMERGENT PLUG (SEE DETAIL 3, LP-14).
3. INSTALL WETLAND TREES & SHRUBS (SEE DETAIL 4, LP-14).
4. POTENTIAL LOCATION FOR IRRIGATION PUMP PIT, COORDINATE FINAL LOCATION WITH THE ENGINEER.

**PLANT SCHEDULE**

	WASHES AND ARROYOS	*11,800 SF
	FLAT TERRACES	*21,160 SF
	LOW SLOPE BASINS (0.5 - 2%)	*207,258 SF
	GENTLE GRADIENT ZONES (2 - 4%)	*246,550 SF
	MODERATE AND SLOPES (4 - 6%)	*106,100 SF
	FLAT DRY RIDGES	*16,800 SF
	WETLAND EMERGENT TYPE 1	*364,241 SF
	WETLAND EMERGENT TYPE 2	*364,600 SF
	RIPIARIAN SHRUB	*79,800 SF
		* TOTAL PROJECT AREA



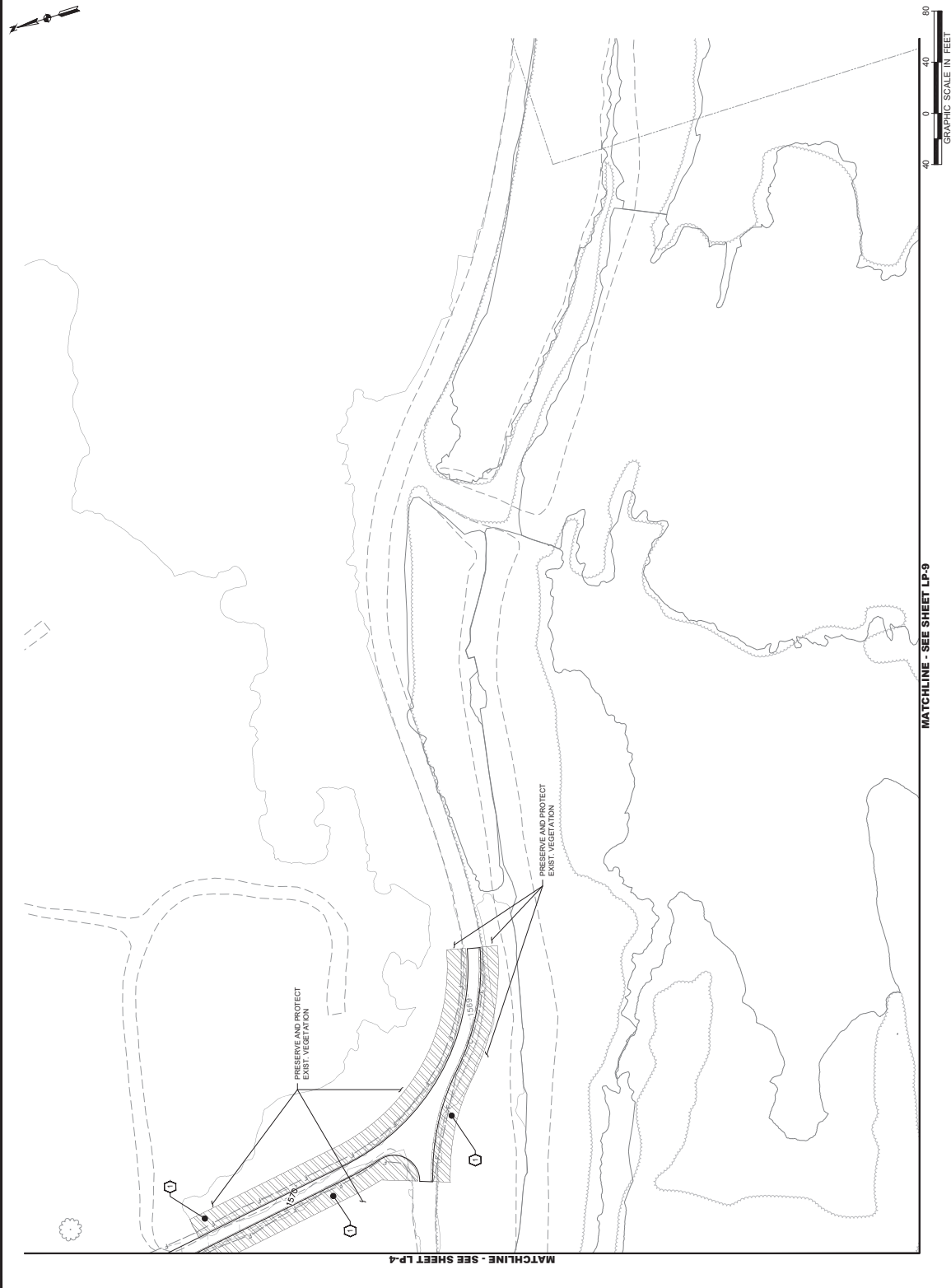
1-800-662-2444 1-702-402-2929

SHEET No.	SCALE
<b>LP-5</b>	AS SHOWN
306 OF 515	
HORIZ.	VERT.
NONE	NONE
FIELD BOOK	
	S.

DESIGNED BY: **WSP**  
 PROJECT No.: 30200385.03  
 DRAWN BY: **WSP**  
 CHECKED BY: **WSP**  
 DATE: 10/23/2025  
 300 South 4th Street, Suite 1200  
 Las Vegas, Nevada 89101  
 Phone: 725.724.4400



**HOLLYWOOD BOULEVARD EXTENSION PHASE II**  
 WETLANDS PARK TO VEGAS VALLEY DRIVE  
 LANDSCAPE PLANS  
 WETLAND AND UPLAND PLANTING  
 CLARK COUNTY, NEVADA, DEPARTMENT OF PUBLIC WORKS



REV. NO.	DATE	DESCRIPTION	APPROVED