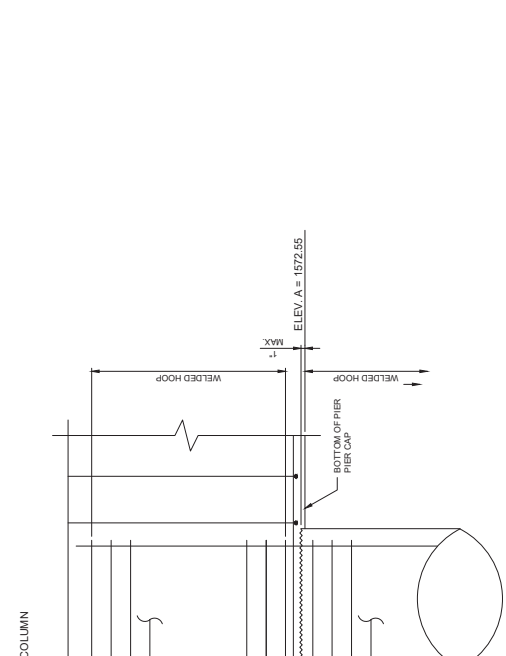
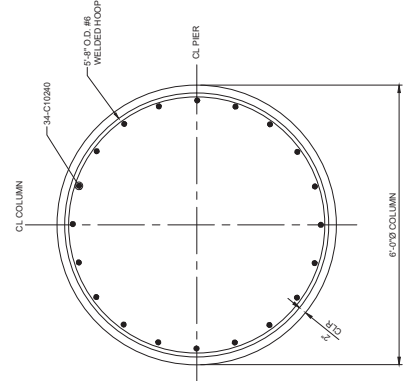


ELEVATION PIER 1
SIDE VIEW



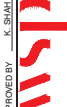
DISCONTINUITY DETAIL



SECTION A-A

NOTES:

1. NO SPICES ARE ALLOWED IN COLUMN LONGITUDINAL REINFORCEMENT.
2. SEE B-205 FOR HOOP MANUAL DIRECT BUTT JOINT DETAILS.
3. ALL CONSTRUCTION JOINTS SHALL HAVE SURFACE INTENTIONALLY ROUGHENED TO AN AMPLITUDE OF 14", THOROUGHLY CLEAN THE SURFACE OF DEBRIS AND LAITANCE.

PROJECT No. 302020385.03	DRAWN BY: P. ANDONJAP	SCALE
DESIGNED BY: B. HUNN	CHECKED BY: F. SARGO	HORIZ: NONE
APPROVED BY: Z. SHARI	DATE: 10/28/2025	VERT: NONE
 300 South 4th Street, Suite 1200 Las Vegas, Nevada 89101 Phone: 725.724.4400		FIELD BOOK NONE
		S. NONE

B-3415

SHEET No.

B-217

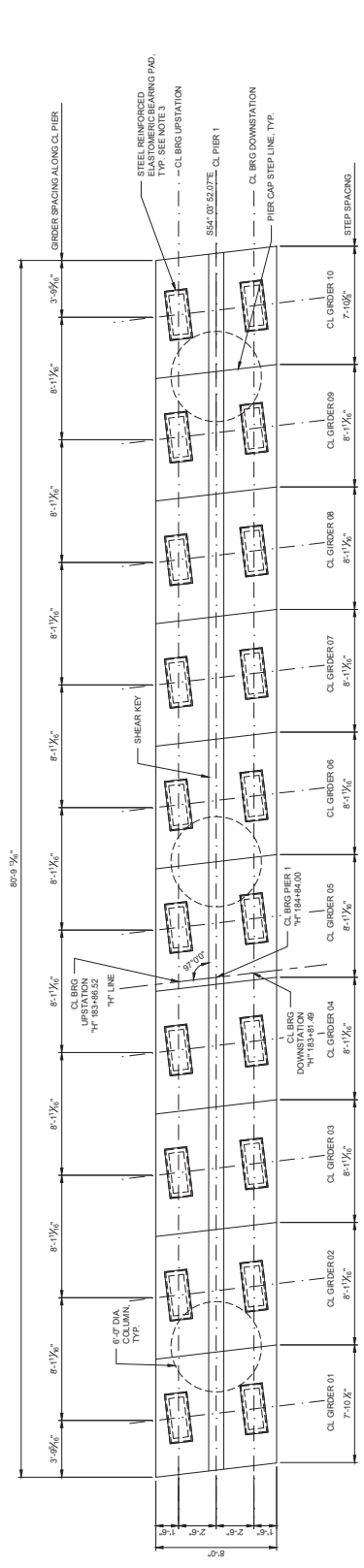
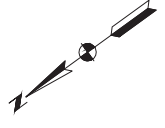
405 OF 515

90% PRELIMINARY SUBMISSION
10/30/2025
SUBJECT TO CHANGE
NOT FOR CONSTRUCTION

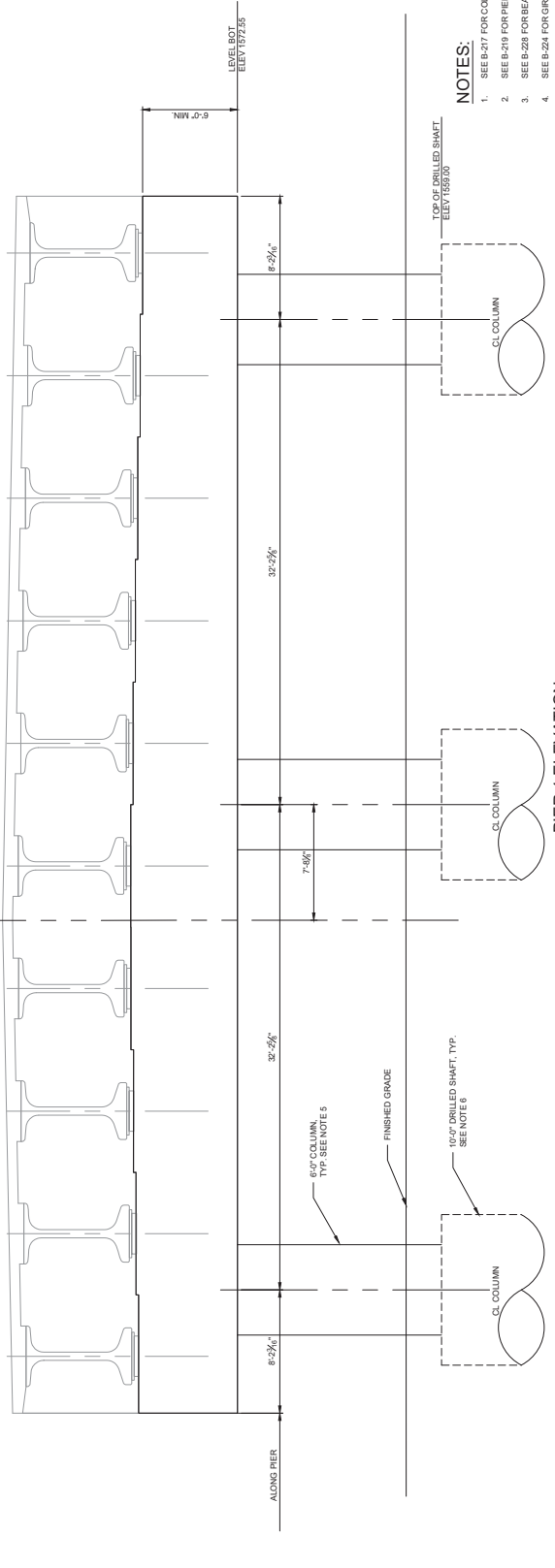
HOLLYWOOD BOULEVARD EXTENSION PHASE II
WETLANDS PARK TO VEGAS VALLEY DRIVE
LAS VEGAS WASH BRIDGE
PIER 1 - COLUMNS
CLARK COUNTY, NEVADA, DEPARTMENT OF PUBLIC WORKS



REV. NO.	DATE	DESCRIPTION	APPROVED



PIER 1 PLAN



PIER 1 ELEVATION
(LOOKING AHEAD ON STATION)

NOTES:

- SEE B-217 FOR COLUMN REINFORCEMENT.
- SEE B-219 FOR PIER CAP REINFORCEMENT.
- SEE B-226 FOR BEARING AND RECESS DETAILS.
- SEE B-224 FOR GIRDER LAYOUT.



HOLLYWOOD BOULEVARD EXTENSION PHASE II
 WETLANDS PARK TO VEGAS VALLEY DRIVE
 LAS VEGAS WASH BRIDGE
 PIER 1 - PIER PLAN AND ELEVATION
 CLARK COUNTY, NEVADA, DEPARTMENT OF PUBLIC WORKS

90%
 PRELIMINARY
 SUBMISSION
 10/30/2025
 SUBJECT TO CHANGE
 NOT FOR CONSTRUCTION

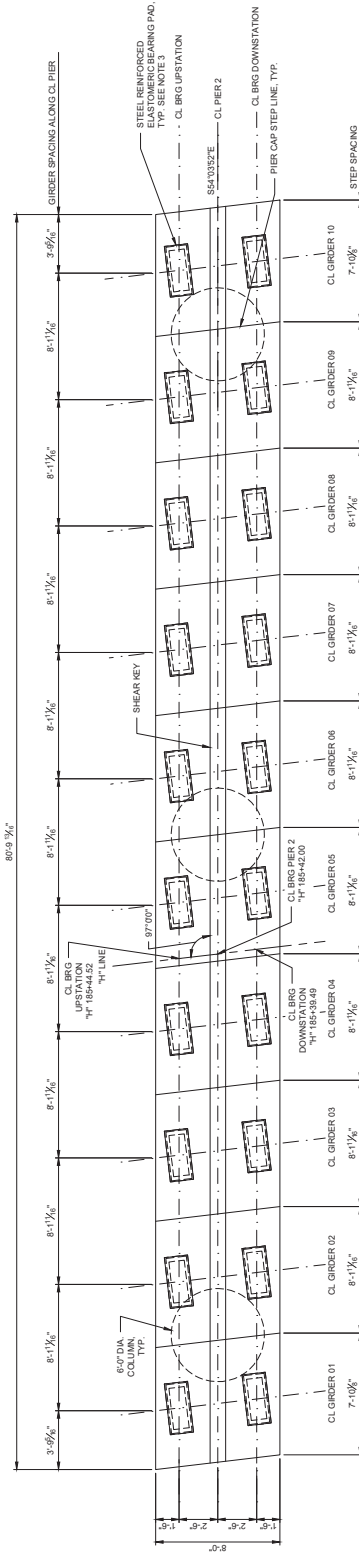
PROJECT NO: 30200385.03
 DRAWN BY: P. ANDONJAP
 CHECKED BY: F. SALASO
 DESIGNED BY: B. HUNN
 APPROVED BY: T. SMITH
 DATE: 10/28/2025

SHEET NO: B-218
 SCALE: NONE
 HORIZ: NONE
 VERT: NONE
 FIELD BOOK: NONE
 FIELD NO: 457-05-515

B-3415

REV. NO.	DATE	DESCRIPTION	APPROVED

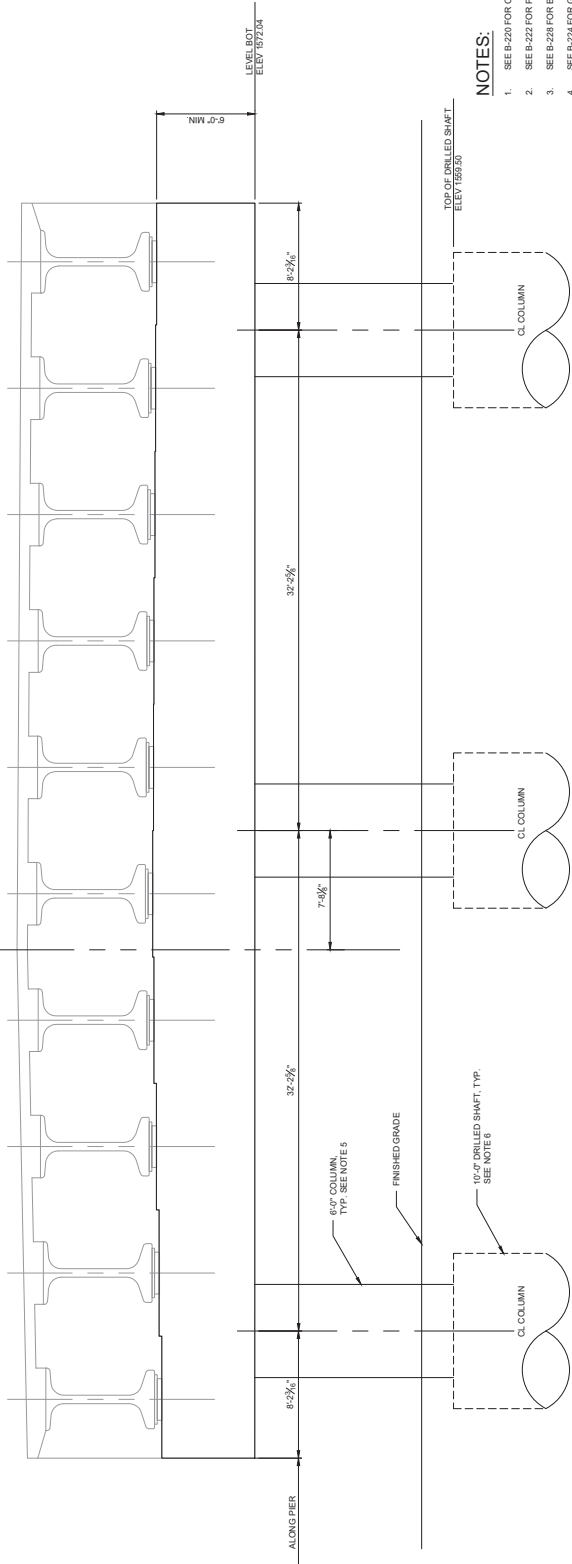
PLAT DATE: Thursday, October 23, 2025 8:45:39 PM
 FILE NAME: C:\BMS\218\B-218\2025\10232025\10232025\B-218.DWG



SEAT ELEVATION PIER 2 CL BRG

	G1	G2	G3	G4	G5	G6	G7	G8	G9	G10
DOWNSTATION	1576.04	1576.21	1576.38	1576.54	1576.62	1576.57	1576.53	1576.46	1576.43	1576.37
UPSTATION	1576.20	1576.46	1576.62	1576.79	1576.87	1576.83	1578.79	1578.75	1578.71	1578.66

PIER 2 PLAN



PIER 2 ELEVATION
 (LOOKING AHEAD ON STATION)

- NOTES:
- SEE B-220 FOR COLUMN REINFORCEMENT.
 - SEE B-222 FOR PIER CAP REINFORCEMENT.
 - SEE B-228 FOR BEARING AND RECESS DETAILS.
 - SEE B-224 FOR GIRDER LAYOUT.
 - DECK DRAIN OPENING NOT SHOWN FOR CLARITY (LOCATION TO BE FINALIZED).

Call 811
 CALL BEFORE YOU DIG
 1-800-662-2444 1-702-402-2929

REV. NO.	DATE	DESCRIPTION	APPROVED

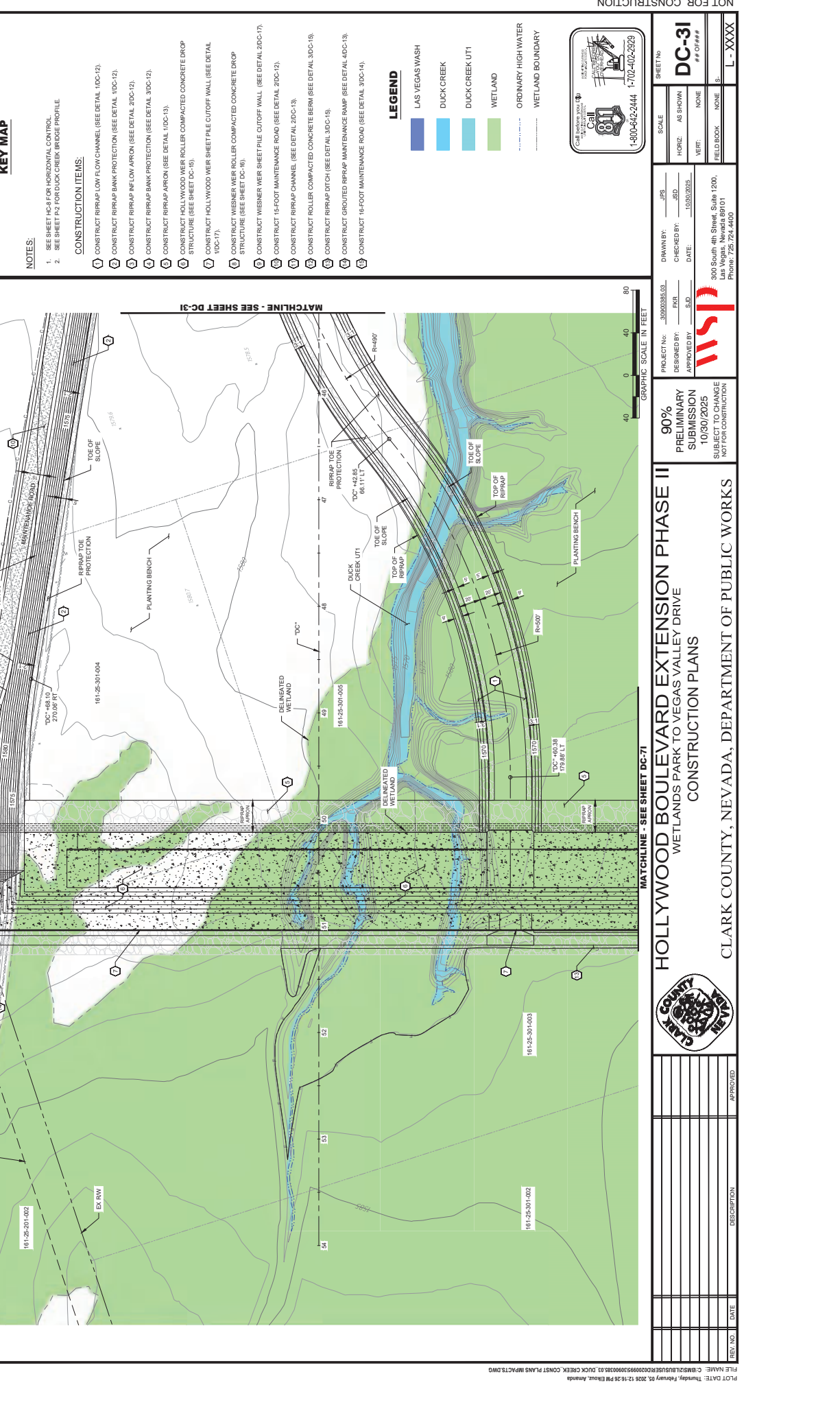


PROJECT NO: 30000385.03
 DESIGNED BY: ESR
 APPROVED BY: SD

DRAWN BY: JPS
 CHECKED BY: JSD
 DATE: 10/30/2025

300 South 4th Street, Suite 1200,
 Las Vegas, Nevada 89101
 Phone: 725.724.4400

REV. NO.	DATE	DESCRIPTION	APPROVED



PROJECT NO: 30000385.03
 DESIGNED BY: ESR
 APPROVED BY: SD

DRAWN BY: JPS
 CHECKED BY: JSD
 DATE: 10/30/2025

300 South 4th Street, Suite 1200,
 Las Vegas, Nevada 89101
 Phone: 725.724.4400

REV. NO.	DATE	DESCRIPTION	APPROVED

101-225-301-006
161-25-301-007

KEY MAP

- NOTES:**
- SEE SHEET HC-8 FOR HORIZONTAL CONTROL.
 - SEE SHEET P-2 FOR DUCK CREEK BRIDGE PROFILE.
- CONSTRUCTION ITEMS:**
- CONSTRUCT RRPAF LOW FLOW CHANNEL (SEE DETAIL 10C-12).
 - CONSTRUCT RRPAF BANK PROTECTION (SEE DETAIL 10C-12).
 - CONSTRUCT RRPAF INFLOW APRON (SEE DETAIL 20C-12).
 - CONSTRUCT RRPAF BANK PROTECTION (SEE DETAIL 30C-12).
 - CONSTRUCT RRPAF APRON (SEE DETAIL 10C-13).
 - CONSTRUCT HOLLYWOOD WEIR ROLLER COMPACTED CONCRETE DROP STRUCTURE (SEE SHEET DC-15).
 - CONSTRUCT HOLLYWOOD WEIR SHEET PILE CUTOFF WALL (SEE DETAIL 10C-17).
 - CONSTRUCT WEISNER WEIR ROLLER COMPACTED CONCRETE DROP STRUCTURE (SEE SHEET DC-16).
 - CONSTRUCT WEISNER WEIR SHEET PILE CUTOFF WALL (SEE DETAIL 30C-17).
 - CONSTRUCT 15-FOOT MAINTENANCE ROAD (SEE DETAIL 30C-12).
 - CONSTRUCT RRPAF CHANNEL (SEE DETAIL 20C-13).
 - CONSTRUCT ROLLER COMPACTED CONCRETE BERM (SEE DETAIL 30C-15).
 - CONSTRUCT RRPAF DITCH (SEE DETAIL 30C-19).
 - CONSTRUCT FOOTED RRPAF MAINTENANCE RAMP (SEE DETAIL 40C-13).
 - CONSTRUCT 16-FOOT MAINTENANCE ROAD (SEE DETAIL 30C-14).

LEGEND

- LAS VEGAS WASH
- DUCK CREEK
- DUCK CREEK UTI
- WETLAND
- ORDINARY HIGH WATER
- WETLAND BOUNDARY

Call 811

CLARK COUNTY
Nevada
1-800-662-2444 1-702-402-2929

SHEET NO.	SCALE	DRAWN BY:	JFS
DC-41	AS SHOWN	CHECKED BY:	SD
# OF SHEETS	HORIZ:	DATE	10/30/2025
FIELD BOOK	VERT:	NONE	
DATE	NONE		
NO.	S.		
L-XXXX	S.		

PROJECT NO.: 30020385.03
DESIGNED BY: EBR
APPROVED BY: SD

90% PRELIMINARY SUBMISSION
SUBMISSION DATE: 10/30/2025
SUBJECT TO CHANGE NOT FOR CONSTRUCTION

HOLLYWOOD BOULEVARD EXTENSION PHASE II
WETLANDS PARK TO VEGAS VALLEY DRIVE
CONSTRUCTION PLANS

CLARK COUNTY, NEVADA, DEPARTMENT OF PUBLIC WORKS

REV. NO.	DATE	DESCRIPTION	APPROVED

PL01 DATE: Thursday, February 25, 2026 12:15:53 PM (Excel) Author: HOLLYWOOD BOULEVARD EXTENSION PHASE II
FILE NAME: C:\BMS\2\BLS\REV\20250909\9510000003\01_DUCK_CREEK_CONSTR_PLANS\DWG\DC-41.dwg

