



## Appendix E – Project Plans



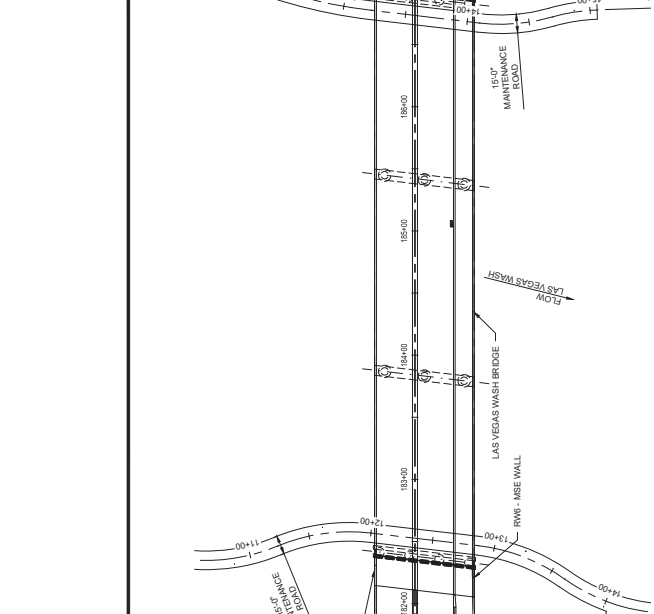


**90% PRELIMINARY SUBMISSION**  
10/30/2025  
SUBJECT TO CHANGE  
NOT FOR CONSTRUCTION

**HOLLYWOOD BOULEVARD EXTENSION PHASE II**  
WETLANDS PARK TO VEGAS VALLEY DRIVE  
DUCK CREEK AND LAS VEGAS WASH BRIDGE  
BRIDGE KEY PLAN AND ELEVATION  
CLARK COUNTY, NEVADA, DEPARTMENT OF PUBLIC WORKS

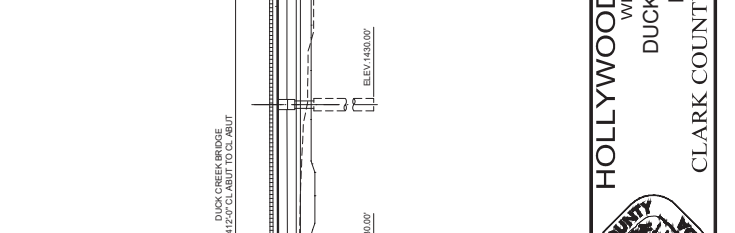


REV. NO.	DATE	DESCRIPTION	APPROVED



PLAN

- NOTES:**
1. FOR DUCK CREEK BRIDGE, SEE B-100 SHEETS
  2. FOR LAS VEGAS WASH BRIDGE, SEE B-200 SHEETS
  3. FOR RETAINING WALLS, SEE RW SHEETS



ELEVATION

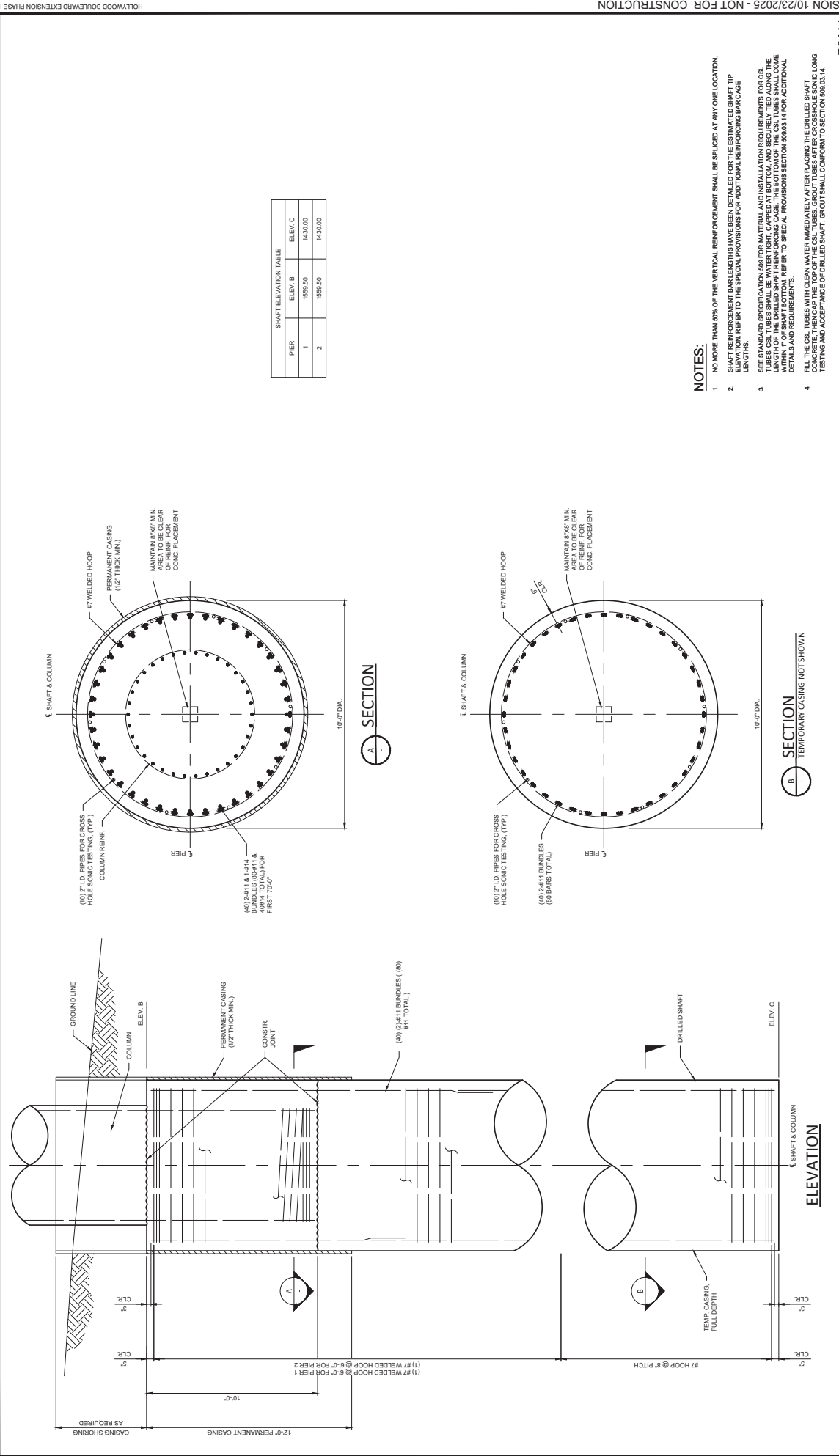












**HOLLYWOOD BOULEVARD EXTENSION PHASE II**  
 WETLANDS PARK TO VEGAS VALLEY DRIVE  
 DUCK CREEK BRIDGE  
 DRILLED SHAFTS - PIER 1 & 2  
 CLARK COUNTY, NEVADA, DEPARTMENT OF PUBLIC WORKS

**90% PRELIMINARY SUBMISSION**  
 10/30/2025  
 SUBJECT TO CHANGE  
 NOT FOR CONSTRUCTION

PROJECT NO: 30020385.03  
 DRAWN BY: J. JAVIER  
 CHECKED BY: F. SALASO  
 DESIGNED BY: B. HUNN  
 APPROVED BY: J. SHARI  
 DATE: 10/28/2025

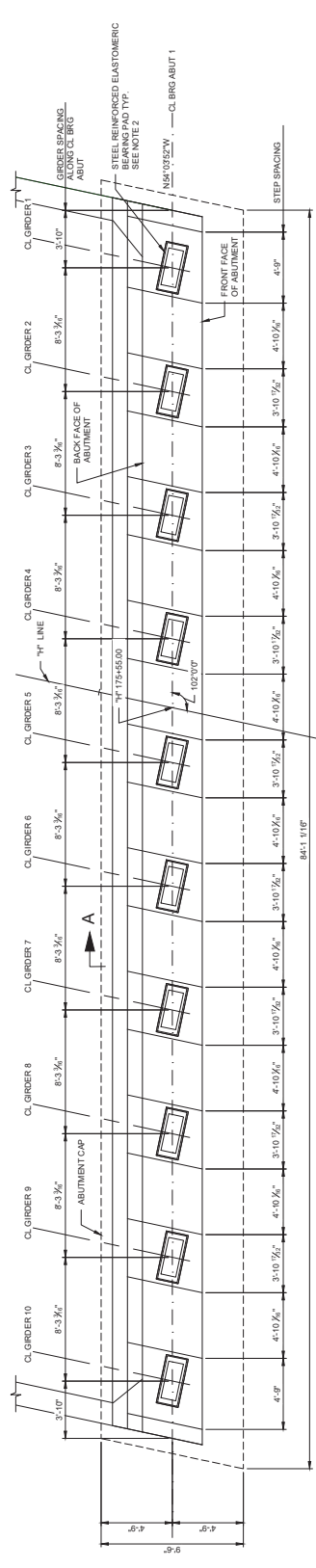
SCALE: NONE  
 HORIZ: NONE  
 VERT: NONE  
 FIELD BOOK: NONE  
 S: S.

**B-106**  
 306 OF 515

300 South 4th Street, Suite 1200  
 Las Vegas, Nevada 89101  
 Phone: 725.724.4400

**WSP**

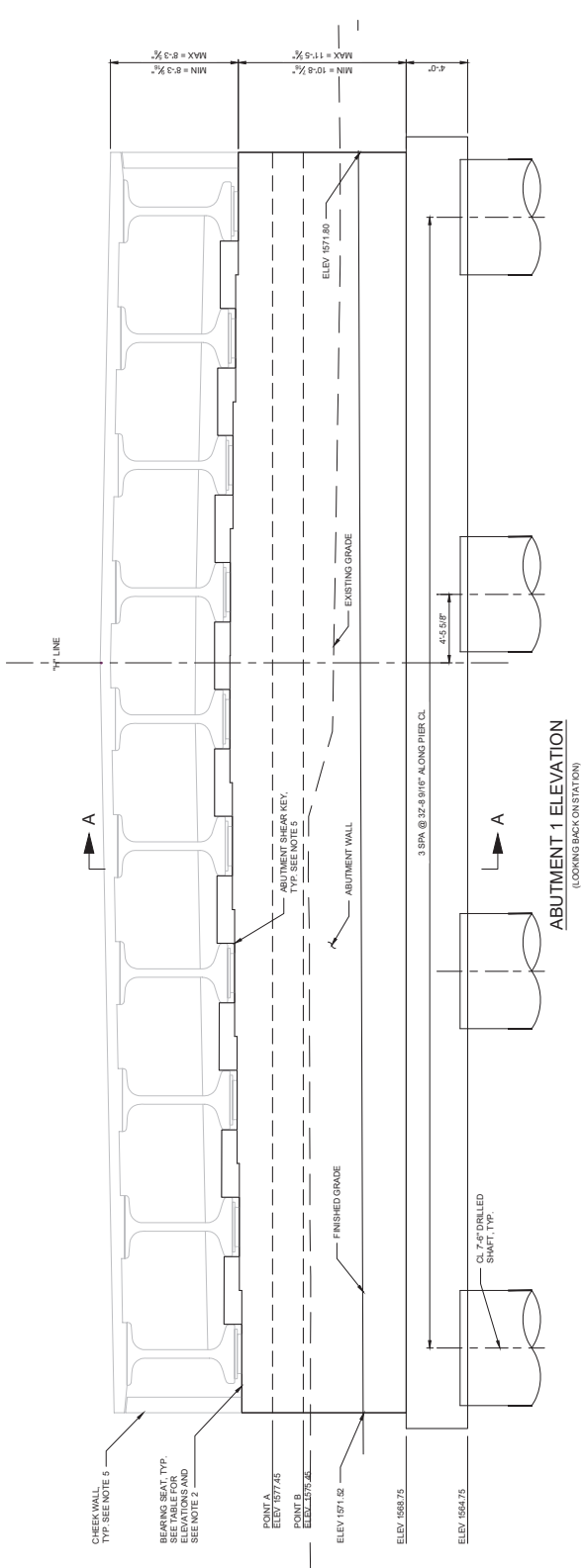
REVISIONS: \_\_\_\_\_ DATE: \_\_\_\_\_ DESCRIPTION: \_\_\_\_\_



SEAT ELEVATION ABUT 1 CL

G1	G2	G3	G4	G5	G6	G7	G8	G9	G10	G11
1579.68	1578.86	1580.02	1580.19	1580.22	1580.06	1579.81	1579.76	1579.01	1579.46	

ABUTMENT 1 PLAN



- NOTES:
- SEE E-111 FOR SECTION A-A.
  - SEE E-128 FOR BEARING RECESS DETAILS.
  - SEE E-112 FOR WEEPHOLE DETAILS.
  - SEE E-124 FOR GIRDER LAYOUT.
  - SEE E-112 FOR ADDITIONAL DETAILS.

B3414

PROJECT NO.	30200385.03	DRAWN BY:	P. ANDONAP
DESIGNED BY:	B. HUDN	CHECKED BY:	F. SALADO
APPROVED BY:	F. SALADO	DATE:	10/28/2025

**90% PRELIMINARY SUBMISSION**  
 10/30/2025  
 SUBJECT TO CHANGE  
 NOT FOR CONSTRUCTION

**WSP**  
 300 South 4th Street, Suite 1200  
 Las Vegas, Nevada 89101  
 Phone: 725.724.4400

**HOLLYWOOD BOULEVARD EXTENSION PHASE II**  
 WETLANDS DUCK TO VEGAS VALLEY DRIVE  
 DUCK CREEK BRIDGE  
 ABUTMENT 1 - PLAN AND ELEVATION  
 CLARK COUNTY, NEVADA, DEPARTMENT OF PUBLIC WORKS

REV. NO.	DATE	DESCRIPTION	APPROVED

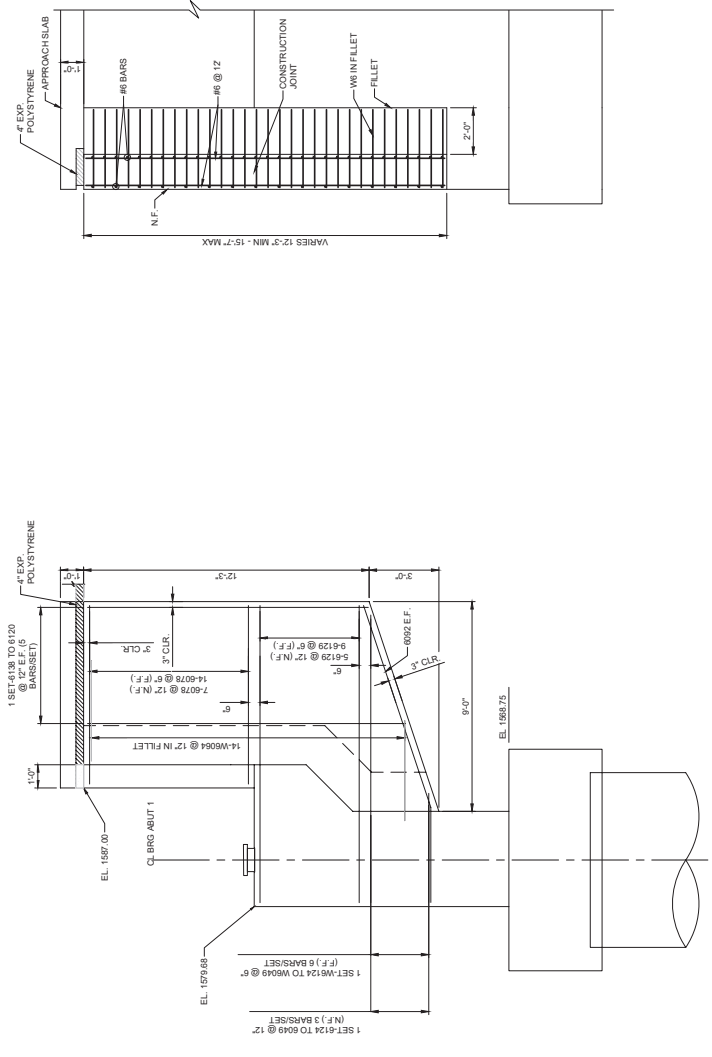
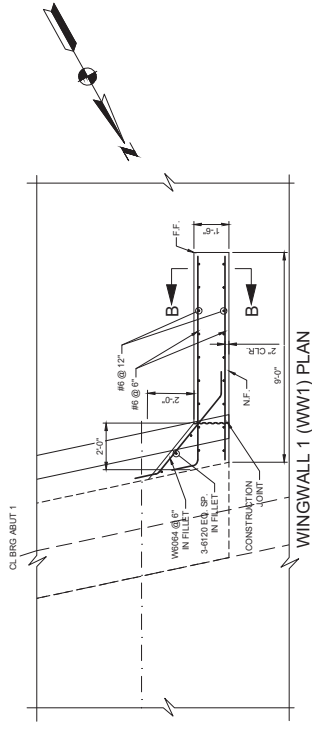










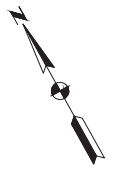
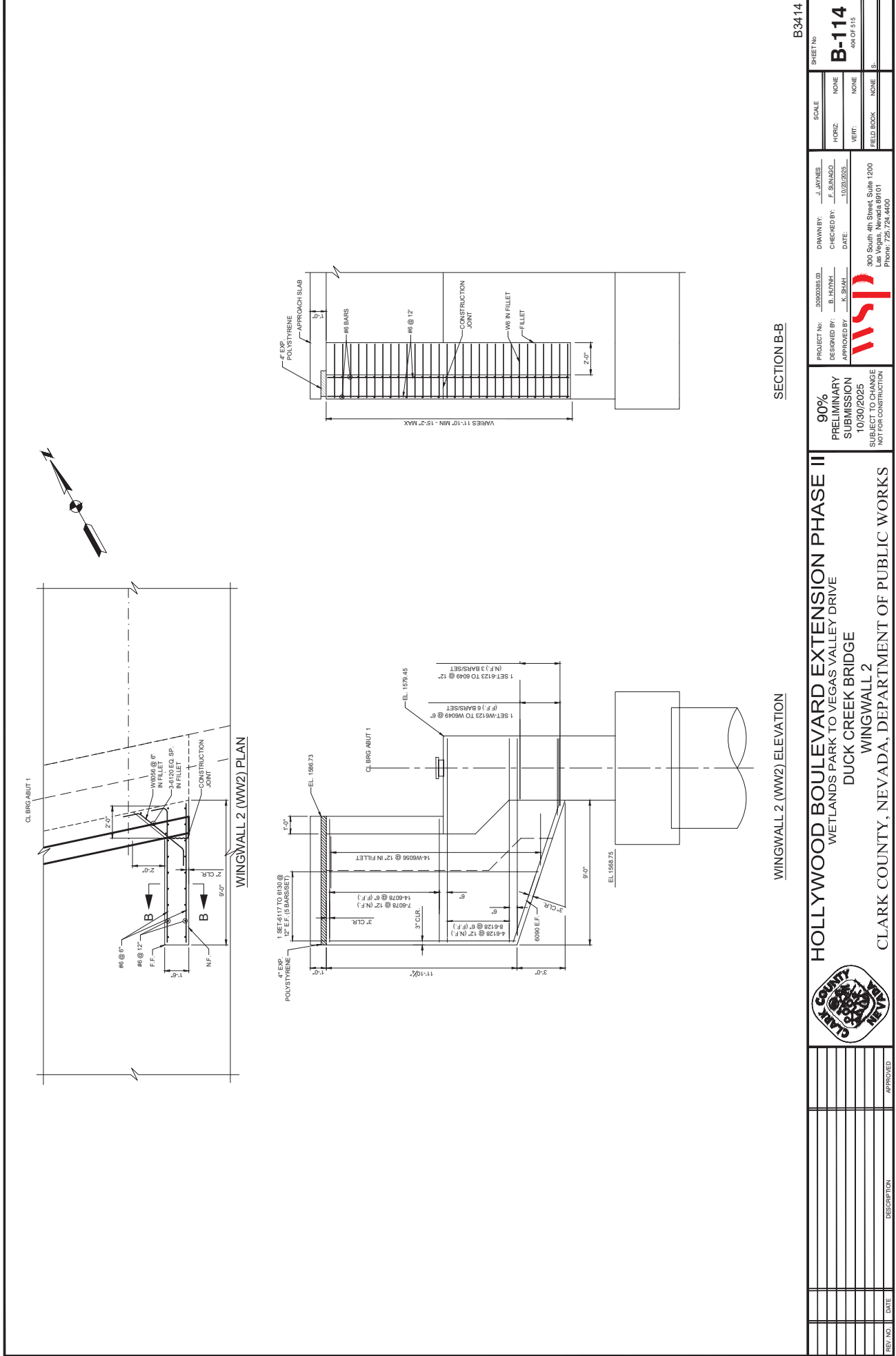



WINGWALL 1 (WW1) ELEVATION

SECTION B-B

		<b>HOLLYWOOD BOULEVARD EXTENSION PHASE II</b> WETLANDS PARK TO VEGAS VALLEY DRIVE DUCK CREEK BRIDGE WINGWALL 1 CLARK COUNTY, NEVADA, DEPARTMENT OF PUBLIC WORKS		PROJECT No: 30200385.03 DRAWN BY: J. JAVNES DESIGNED BY: B. HUNN APPROVED BY: T. SHARI CHECKED BY: F. SARGO DATE: 10/28/2025		SHEET No: B-113 SCALE: NONE HORIZ: NONE VERT: NONE FIELD BOOK: NONE S:	
90% PRELIMINARY SUBMISSION 10/30/2025 SUBJECT TO CHANGE NOT FOR CONSTRUCTION		300 South 4th Street, Suite 1200 Las Vegas, Nevada 89101 Phone: 725.724.4400		B3414		300 South 4th Street, Suite 1200 Las Vegas, Nevada 89101 Phone: 725.724.4400	

REV. NO.	DATE	DESCRIPTION	APPROVED



PROJECT No. 30020385.03	DRAWN BY: J. JAVNES	SCALE
DESIGNED BY: B. HUDN	CHECKED BY: F. SALASO	HORIZ: NONE
APPROVED BY: T. SHARI	DATE: 10/28/2025	VERT: NONE
		FIELD BOOK: NONE
300 South 4th Street, Suite 1200 Las Vegas, Nevada 89101 Phone: 725.724.4400		S:

**90% PRELIMINARY SUBMISSION**  
 10/30/2025  
 SUBJECT TO CHANGE  
 NOT FOR CONSTRUCTION

**HOLLYWOOD BOULEVARD EXTENSION PHASE II**  
 WETLANDS PARK TO VEGAS VALLEY DRIVE  
 DUCK CREEK BRIDGE  
 WINGWALL 2  
 CLARK COUNTY, NEVADA, DEPARTMENT OF PUBLIC WORKS



REV. NO.	DATE	DESCRIPTION	APPROVED

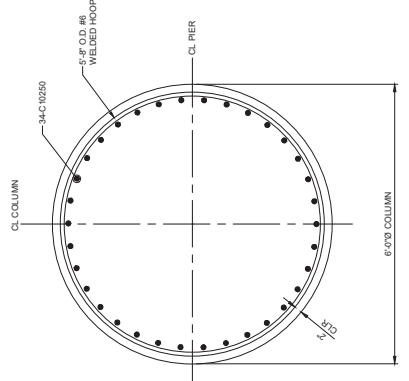
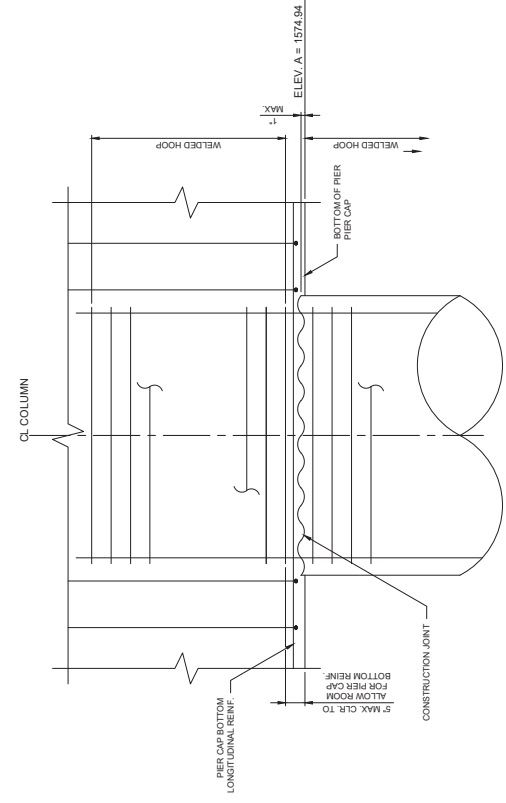
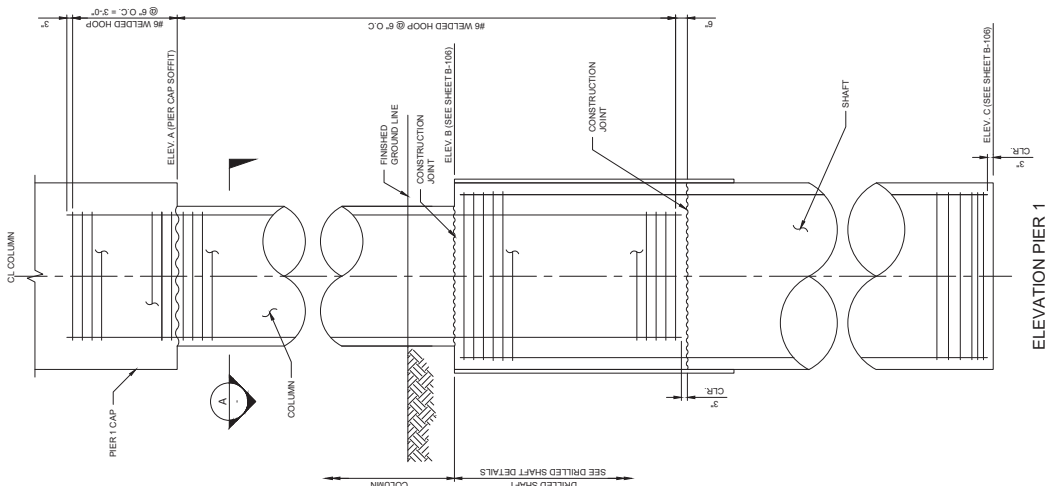












**NOTES:**

1. NO SPICES ARE ALLOWED IN COLUMN LONGITUDINAL REINFORCEMENT.
2. SEE B-105 FOR HOOP MANUAL DIRECT BUTT JOINT DETAILS.
3. ALL CONSTRUCTION JOINTS SHALL HAVE SURFACE INTENTIONALLY ROUGHENED TO AN AMPLITUDE OF 14" THOROUGHLY CLEAN THE SURFACE OF DEBRIS AND LANTANCE.

B3414

PROJECT NO:	302020385.03	DRAWN BY:	P. ANDONJAP	SCALE:	
DESIGNED BY:	B. HUNN	CHECKED BY:	F. SARGO	HORIZ:	NONE
APPROVED BY:	Z. SHAI	DATE:	10/28/2025	VERT:	NONE

**90% PRELIMINARY SUBMISSION**  
10/30/2025  
SUBJECT TO CHANGE  
NOT FOR CONSTRUCTION

**HOLLYWOOD BOULEVARD EXTENSION PHASE II**  
WETLANDS PARK TO VEGAS VALLEY DRIVE  
DUCK CREEK BRIDGE  
PIER 2 - COLUMNS  
CLARK COUNTY, NEVADA, DEPARTMENT OF PUBLIC WORKS



REV. NO.	DATE	DESCRIPTION	APPROVED

300 South 4th Street, Suite 1200  
Las Vegas, Nevada 89101  
Phone: 725.724.4400



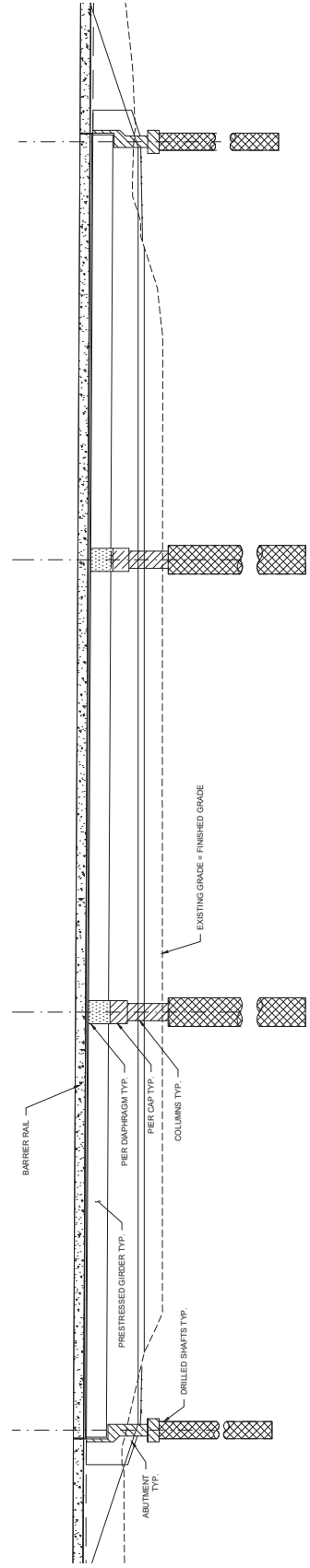












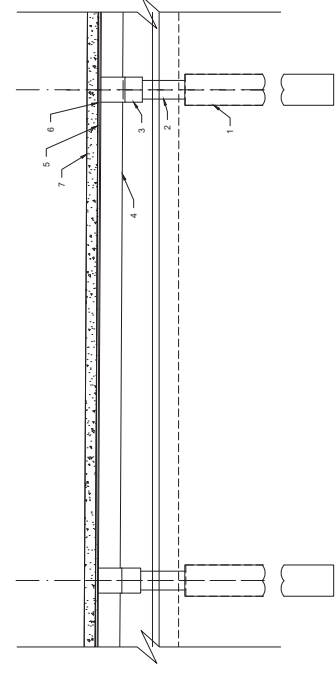
**CONCRETE CLASSIFICATION DIAGRAM**  
SCALE: NOT TO SCALE

**LEGEND**

- CLASS 5 DRILLED SHAFT (c=4,500 PSI @ 28 DAYS)
- CLASS 2 INTERMEDIATE DAPHRAGM (c=4,500 PSI @ 28 DAYS) AND/OR CONCRETE (c=4,500 PSI @ 28 DAYS) AND/OR CONCRETE (c=4,500 PSI @ 28 DAYS)
- CLASS 2 APPROACH SLAB, ABUTMENT AND PIER DAMPHRAGMS, MEDIAN BARRIERS
- PRESTRESSED GIRDER (SEE GIRDER DETAILS FOR PRESTRESSED GIRDER CONCRETE)
- CLASS 2 APPROACH SLAB, ABUTMENT AND PIER DAMPHRAGMS, MEDIAN BARRIERS
- CLASS 2 APPROACH SLAB, ABUTMENT AND PIER DAMPHRAGMS, MEDIAN BARRIERS
- CLASS 2 APPROACH SLAB, ABUTMENT AND PIER DAMPHRAGMS, MEDIAN BARRIERS

**CONCRETE PLACEMENT SEQUENCE:**

1. PLACE DRILLED SHAFTS.
2. PLACE COLUMNS AT PIERS, STEWART ABUTMENTS.
3. PLACE PIERCAPS.
4. PLACE GIRDERS AND STEEL INTERMEDIATE DAPHRAGMS.
5. PLACE DECK UP TO CONSTRUCTION JOINT AND CONSTRUCT ABUTMENT DAMPHRAGM FOR DECK PLACING SEQUENCE. SEE B-2/1.
6. PLACE PIER DAMPHRAGM AND REMAINING DECK.
7. PLACE BARRIER RAIL (EAST, WEST, AND INTERIOR) AND MEDIANS.



**CONCRETE PLACING SCHEDULE**  
SCALE: NOT TO SCALE

**90% PRELIMINARY SUBMISSION**  
10/30/2025  
SUBJECT TO CHANGE  
NOT FOR CONSTRUCTION

**WSP**  
300 South 4th Street, Suite 1200  
Las Vegas, Nevada 89101  
Phone: 725.724.4400

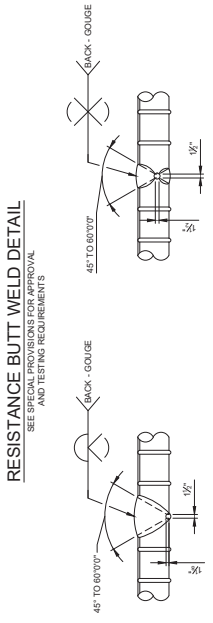
PROJECT No.	302020385.03	DRAWN BY:	J. JAVIER	SCALE	
DESIGNED BY:	B. HUNN	CHECKED BY:	F. SARGO	HORIZ:	NONE
APPROVED BY:	F. SARGO	DATE:	10/28/2025	VERT:	NONE
				FIELD BOOK	NONE
				S.	NONE

SHEET No. **B-204** of 05 of 15

**HOLLYWOOD BOULEVARD EXTENSION PHASE II**  
WETLANDS PARK TO VEGAS VALLEY DRIVE  
LAS VEGAS WASH BRIDGE  
CONCRETE CLASSIFICATION  
CLARK COUNTY, NEVADA, DEPARTMENT OF PUBLIC WORKS

REV. NO.	DATE	DESCRIPTION	APPROVED

**RESISTANCE BUTT WELD DETAIL**  
SEE SPECIAL PROVISIONS FOR APPROVAL AND TESTING REQUIREMENTS

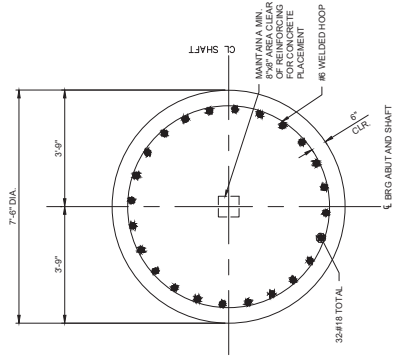


**SINGLE-GROOVE WELD**  
AWS D1.4 FIGURE 3.2(A)

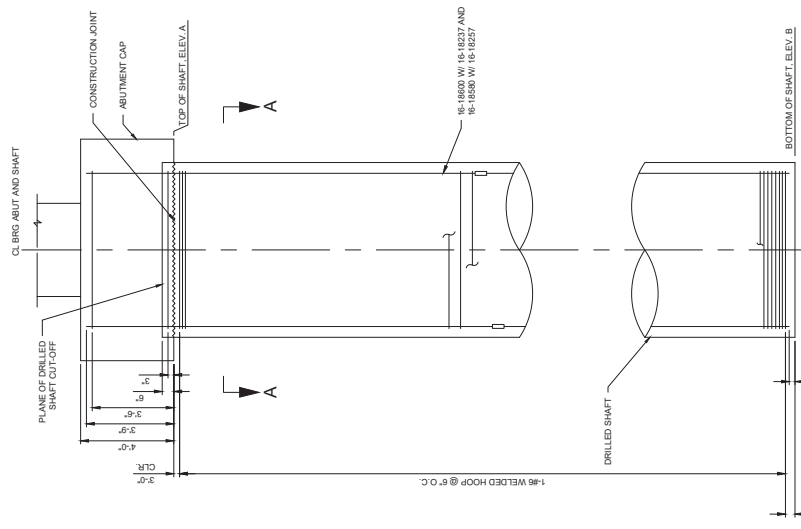
**DOUBLE V-GROOVE WELD**  
AWS D1.4 FIGURE 3.2(B)

**HOOP WELDING DETAILS**  
ALL BACKING SHALL BE REMOVED.  
SEE SPEC SECTION 505.

SHAFT ELEVATION TABLE		
ABUTMENT	ELEV. A	ELEV. B
1	1482.50	1482.50
2	1592.50	1482.50



**SECTION A-A**



**ELEVATION**

ABUTMENT 1 SHOWN AND ABUTMENT 2 SIMILAR.

- NOTES:**
- NO MORE THAN 50% OF THE VERTICAL REINFORCEMENT SHALL BE SPLICED AT ANY ONE LOCATION.
  - SHAFT REINFORCEMENT BAR LENGTHS HAVE BEEN DETAILED FOR THE ESTIMATED SHAFT TIP ELEVATION. REFER TO THE SPECIAL PROVISIONS FOR ADDITIONAL REINFORCING BAR CAGE LENGTHS.
  - SEE STANDARD SPECIFICATION 509 FOR MATERIAL AND INSTALLATION REQUIREMENTS FOR C.S.T. TUBES. THE DRILLED SHAFT REINFORCING CAGE SHALL BE INSTALLED WITHIN 1\"/>
  - FILL THE C.S.T. TUBES WITH CLEAN WATER IMMEDIATELY AFTER PLACING THE DRILLED SHAFT REINFORCEMENT. THE WATER SHALL BE MAINTAINED AT A MINIMUM OF 2\"/>
  - PROVIDE LEVITON STANDARD MECHANICAL COUPLER OR EQUIVALENT FOR ALL #18 BARS IN DRILLED SHAFT. VERIFY BAR LENGTHS W/ SLICE MANUFACTURER. STAGGER COUPLER 2\"/>
  - CONCRETE COMPRESSIVE STRENGTH IN ALL DRILLED SHAFTS SHALL BE  $f_c = 5,000$  PSI @ 28 DAYS.
  - ALL LONGITUDINAL REINFORCEMENT IN DRILLED SHAFT SHALL BE ASTM A706 GRADE 60 STEEL.

B-3415

PROJECT No.	30200385.03	DRAWN BY:	P. ANDONJAP
DESIGNED BY:	B. HUDN	CHECKED BY:	F. SALASO
APPROVED BY:	E. SHAI	DATE:	10/28/2025
SCALE:		HORIZ:	NONE
		VERT:	NONE
		FIELD BOOK:	NONE
		S:	

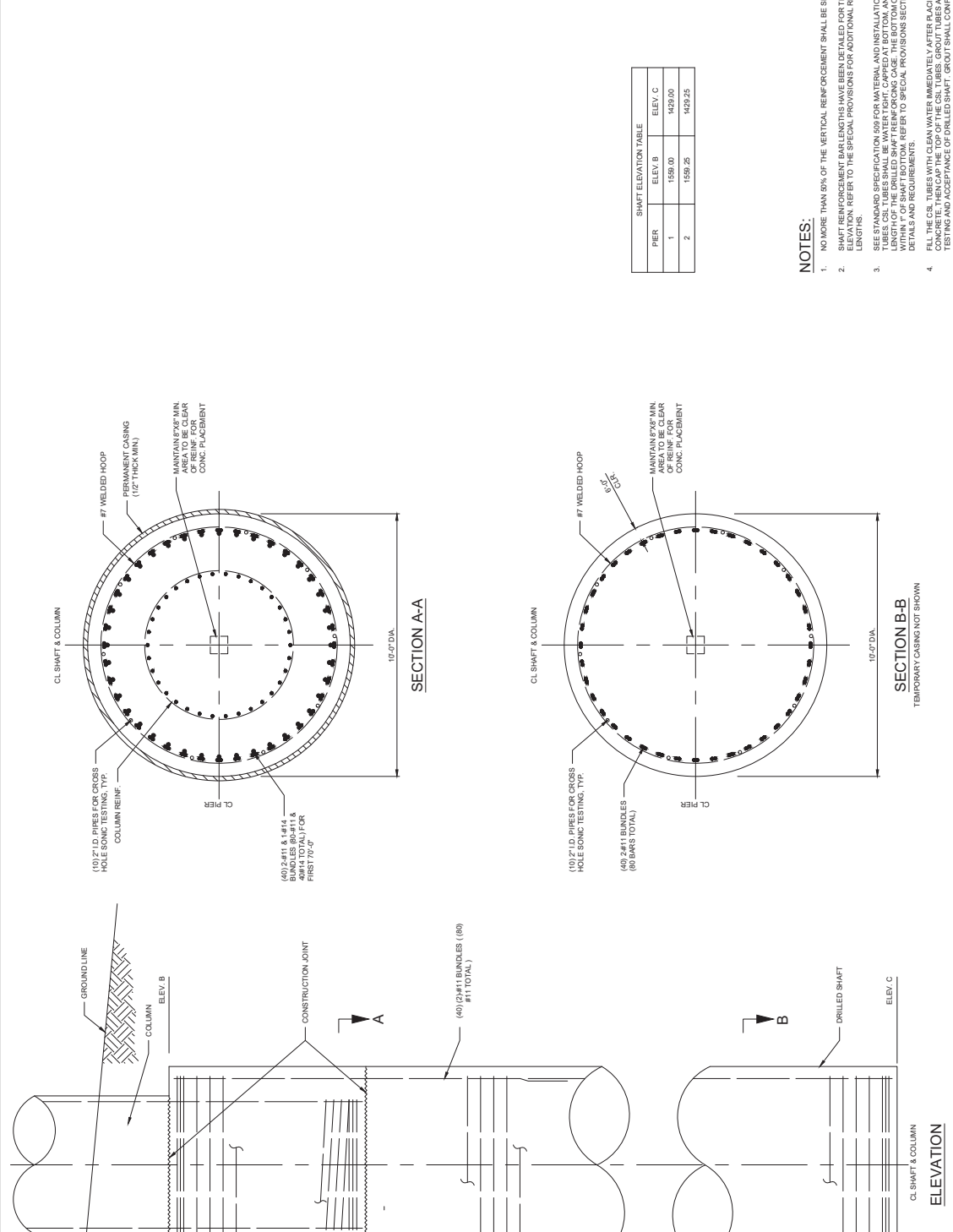
**WSP**  
300 South 4th Street, Suite 1200  
Las Vegas, Nevada 89101  
Phone: 725.724.4400

**90% PRELIMINARY SUBMISSION**  
10/30/2025  
SUBJECT TO CHANGE  
NOT FOR CONSTRUCTION

**HOLLYWOOD BOULEVARD EXTENSION PHASE II**  
WETLANDS PARK TO VEGAS VALLEY DRIVE  
LAS VEGAS WASH BRIDGE  
DRILLED SHAFTS - ABUTMENT 1 & 2  
CLARK COUNTY, NEVADA, DEPARTMENT OF PUBLIC WORKS



REV. NO.	DATE	DESCRIPTION	APPROVED



PIER	ELEV. B	ELEV. C
1	1550.00	1429.00
2	1550.25	1429.25

**NOTES:**

- NO MORE THAN 50% OF THE VERTICAL REINFORCEMENT SHALL BE SPICED AT ANY ONE LOCATION. SHAFT REINFORCEMENT BAR LENGTHS HAVE BEEN DETAILED FOR THE ESTIMATED SHAFT TIP LOCATION. REFER TO THE SPECIAL PROVISIONS FOR ADDITIONAL REINFORCING BAR GAGE LENGTHS.
- SEE STANDARD SPECIFICATION 509 FOR MATERIAL AND INSTALLATION REQUIREMENTS. FOR CSL TUBES CSL TUBES SHALL BE WATER TIGHT, CAPPED AT BOTTOM, AND SECURELY TIED ALONG THE LENGTH OF THE DRILLED SHAFT REINFORCING CAGE. THE BOTTOM OF THE CSL TUBES SHALL COME IN ACCORDANCE WITH THE SPECIAL PROVISIONS SECTION 509.02.14 FOR ADDITIONAL DETAILS AND REQUIREMENTS.
- FILL THE CSL TUBES WITH CLEAN WATER IMMEDIATELY AFTER RACING THE DRILLED SHAFT CONCRETE. THEN CAP THE TOP OF THE CSL TUBES. GROUT TUBES AFTER CROSSHOLE SONIC LOG TESTING AND ACCEPTANCE OF DRILLED SHAFT. GROUT SHALL CONFORM TO SECTION 509.03.14.

**B-3415**

PROJECT NO: 30200385.03 DRAWN BY: P. ANDONJAP  
 DESIGNED BY: B. HUNN CHECKED BY: F. SALADO  
 APPROVED BY: Z. SHARI DATE: 10/28/2025

SCALE: NONE  
 HORIZ: NONE  
 VERT: NONE

FIELD BOOK: NONE  
 S: S.

**B-206**  
 465-05-515

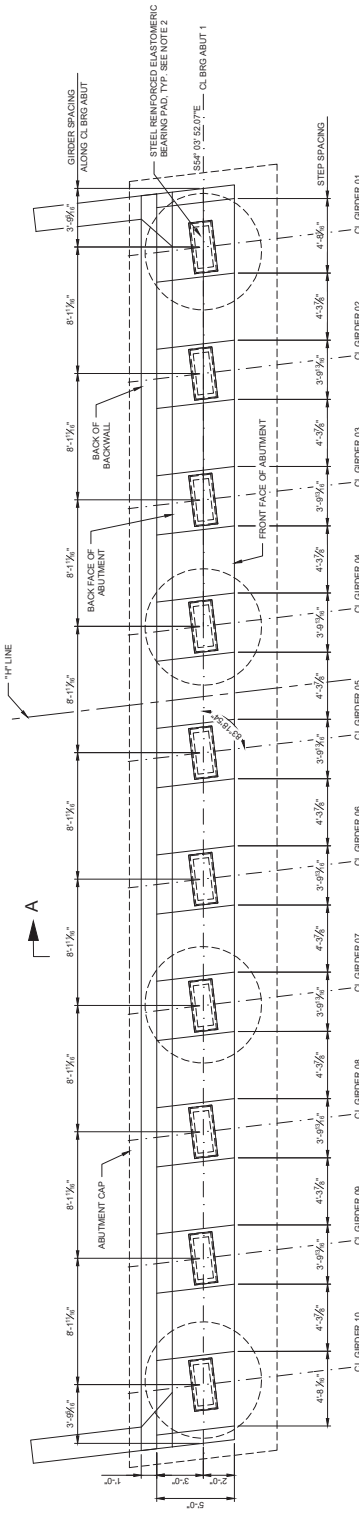
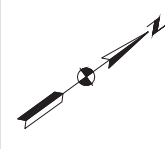
300 South 4th Street, Suite 1200  
 Las Vegas, Nevada 89101  
 Phone: 725-724-4400

**90% PRELIMINARY SUBMISSION**  
 10/30/2025  
 SUBJECT TO CHANGE  
 NOT FOR CONSTRUCTION

**HOLLYWOOD BOULEVARD EXTENSION PHASE II**  
 WETLANDS PARK TO VEGAS VALLEY DRIVE  
 LAS VEGAS WASH BRIDGE  
 DRILLED SHAFTS - PIER 1 & 2  
 CLARK COUNTY, NEVADA, DEPARTMENT OF PUBLIC WORKS

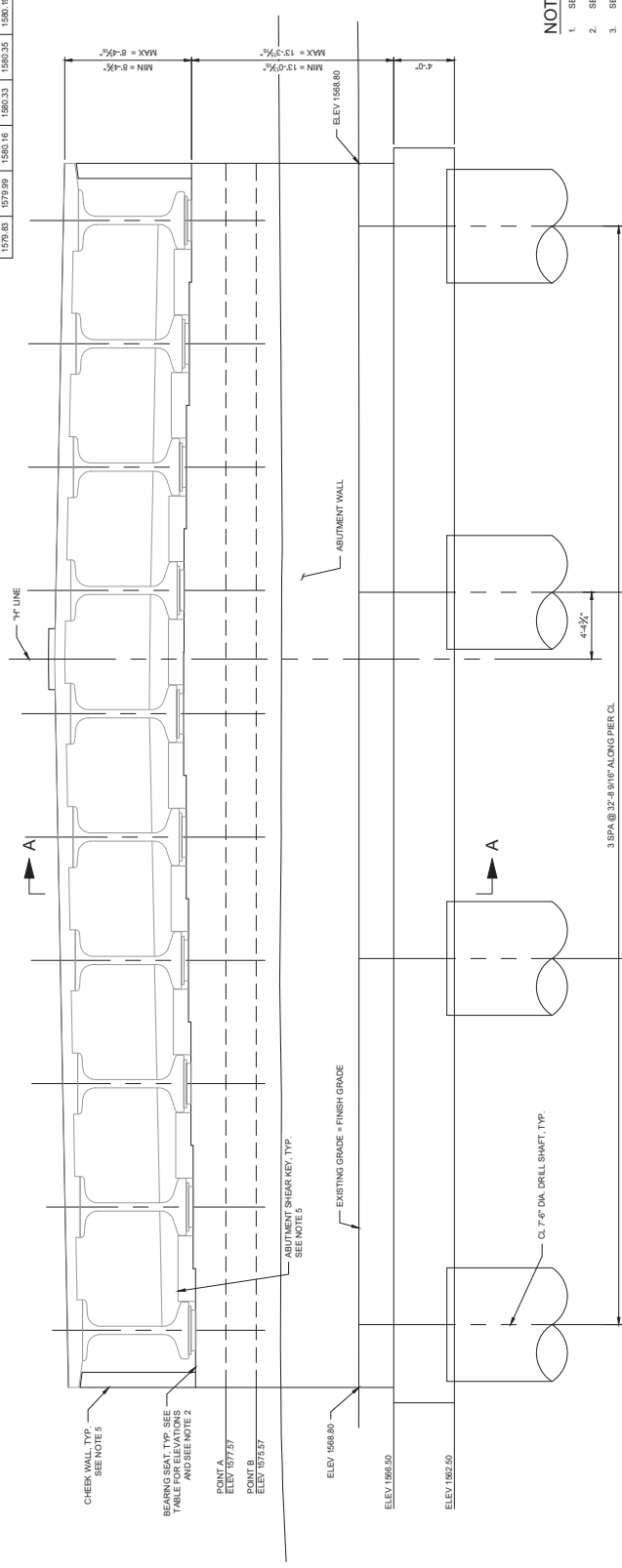


REV. NO.	DATE	DESCRIPTION	APPROVED



SEAT ELEVATION ABUT 1 CL										
G1	G2	G3	G4	G5	G6	G7	G8	G9	G10	G11
1573.28	1579.99	1586.16	1593.33	1593.35	1596.19	1593.88	1572.88	1572.72	1573.57	

ABUTMENT 1 PLAN



ABUTMENT 1 ELEVATION  
(LOOKING BACK ON STATION)

- NOTES:**
- SEE B211 FOR SECTION A-A.
  - SEE B228 FOR BEARING RECESS DETAILS.
  - SEE B212 FOR WEEPHOLE DETAILS.
  - SEE B224 FOR GIRDER LAYOUT.
  - SEE B212 FOR ADDITIONAL DETAILS.

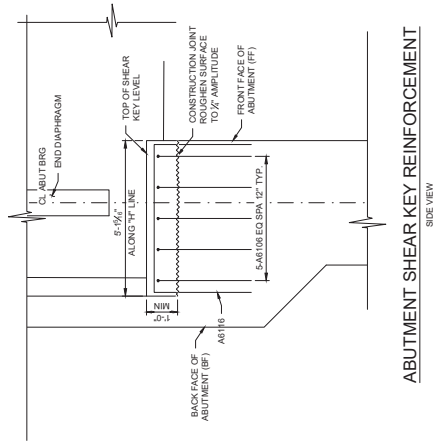
PROJECT No: 30200385.03 DESIGNED BY: B. HUNN APPROVED BY: F. SHARL DATE: 10/28/2025		DRAWN BY: P. ANDONAP CHECKED BY: F. SHARL DATE: 10/28/2025		SCALE: NONE HORIZ: NONE VERT: NONE		SHEET No: <b>B-207</b> JOB NO: 05-015			
90% PRELIMINARY SUBMISSION 10/30/2025 SUBJECT TO CHANGE NOT FOR CONSTRUCTION				HOLLYWOOD BOULEVARD EXTENSION PHASE II WETLANDS PARK TO VEGAS VALLEY DRIVE LAS VEGAS WASH BRIDGE ABUTMENT 1 - PLAN AND ELEVATION CLARK COUNTY, NEVADA, DEPARTMENT OF PUBLIC WORKS				300 South 4th Street, Suite 1200 Las Vegas, Nevada 89101 Phone: 725.724.4400	
REV. NO.	DATE	DESCRIPTION						APPROVED	



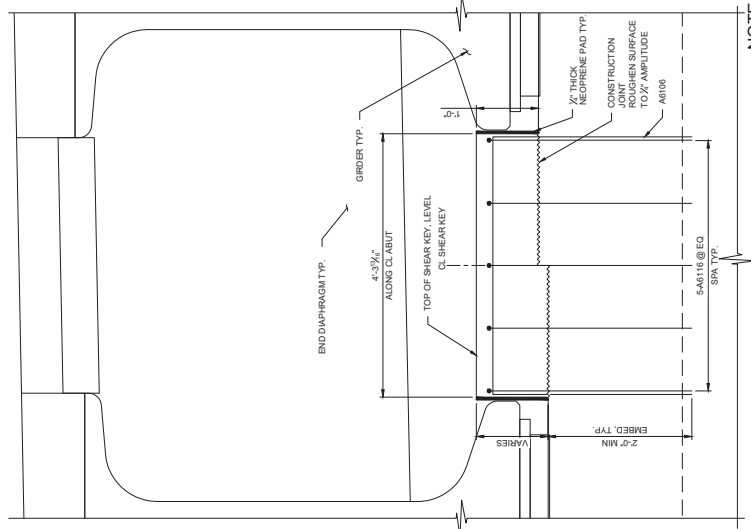






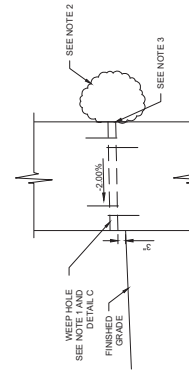


ABUTMENT SHEAR KEY REINFORCEMENT  
 SIDE VIEW

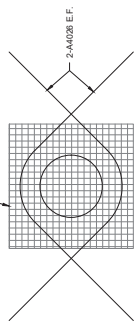


ABUTMENT SHEAR KEY REINFORCEMENT  
 FRONT VIEW  
 EAST SHOWN, WEST SIMILAR

NOTE:  
 1. PLACE NEOPRENE PADS AND VARS AS SHOWN FOR GIRDERS ARE ERECTED.



WEEP HOLE DETAIL



CHEEK WALL DETAIL  
 EAST SHOWN, WEST SIMILAR

- NOTES:
1. 4 INCH DIA. DRAINS AT 2 FEET MAXIMUM CENTER TO CENTER. EXPOSED DRAINS SHALL BE LOCATED 3 INCHES ABOVE FINISH GRADE.
  2. CURB FEET OF TYPE 2 DRAIN BACKFILL ENCAPSULATED IN A GEOTEXTILE FABRIC SECURELY TIED. GEOTEXTILE SHALL MEET THE FOLLOWING:
    - A. MEET AT LEAST CLASS 2 STRENGTH REQUIREMENT PER ASTM D 4854.
    - B. HAVE AN AGS NOT GREATER THAN U.S. SIEVE NO. 40.
    - C. HAVE A PERMITIVITY OF AT LEAST U.S. SEC-1.
    - D. 6 INCH SQUARE ALUMINUM OR GALVANIZED STEEL WIRE MESH WITH 1/4 INCH SPACING AND PENNSINGS PER INCH AND A MINIMUM WIRE DIAMETERS 0.03 INCHES.

B-3415

SHEET NO.	SCALE
<b>B-212</b>	HORIZ: NONE
405 OF 515	VERT: NONE
DATE: 10/28/2025	FIELD BOOK
DESIGNED BY: F. SARAGO	NONE
CHECKED BY: F. SARAGO	NONE
DRAWN BY: P. ANDONJAP	NONE
APPROVED BY: F. SARAGO	NONE

PROJECT NO.: 30200385.03  
 DRAWN BY: P. ANDONJAP  
 CHECKED BY: F. SARAGO  
 DESIGNED BY: F. SARAGO  
 APPROVED BY: F. SARAGO  
 DATE: 10/28/2025

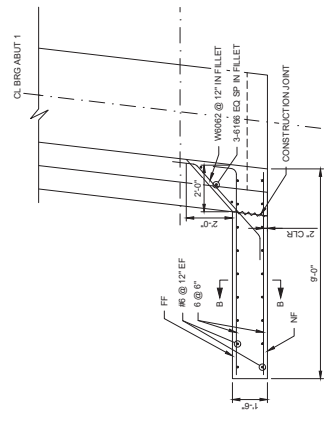
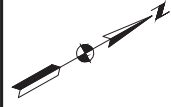
300 South 4th Street, Suite 1200  
 Las Vegas, Nevada 89101  
 Phone: 725.724.4400

**90% PRELIMINARY SUBMISSION**  
 10/30/2025  
 SUBJECT TO CHANGE NOT FOR CONSTRUCTION

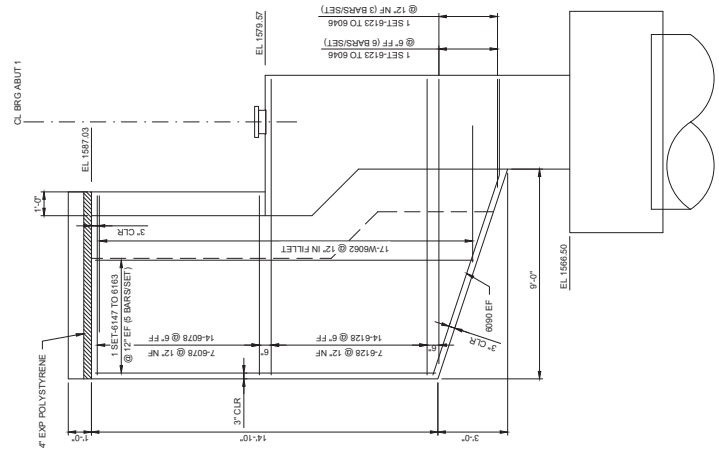
**HOLLYWOOD BOULEVARD EXTENSION PHASE II**  
 WETLANDS PARK TO VEGAS VALLEY DRIVE  
 LAS VEGAS WASH BRIDGE  
 ABUTMENT DETAILS  
 CLARK COUNTY, NEVADA, DEPARTMENT OF PUBLIC WORKS



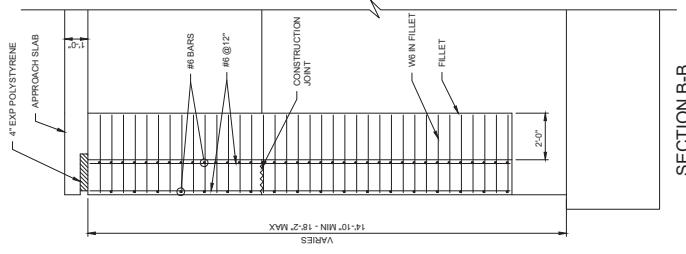
REV. NO.	DATE	DESCRIPTION	APPROVED



WINGWALL 1 (WW1) PLAN



WINGWALL 1 (WW1) ELEVATION



SECTION B-B



**HOLLYWOOD BOULEVARD EXTENSION PHASE II**  
 WETLANDS PARK TO VEGAS VALLEY DRIVE  
 LAS VEGAS WASH BRIDGE  
 WING WALL 1  
 CLARK COUNTY, NEVADA, DEPARTMENT OF PUBLIC WORKS

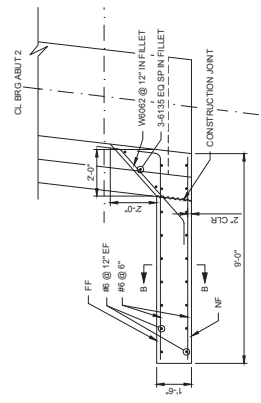
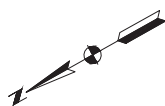
**90% PRELIMINARY SUBMISSION**  
 10/30/2025  
 SUBJECT TO CHANGE  
 NOT FOR CONSTRUCTION

PROJECT No:	30200385.03	DRAWN BY:	P. ANDONJAP	SCALE:	
DESIGNED BY:	B. HUNN	CHECKED BY:	F. SALGADO	HORIZ:	NONE
APPROVED BY:	F. SALGADO	DATE:	10/28/2025	VERT:	NONE
			300 South 4th Street, Suite 1200 Las Vegas, Nevada 89101 Phone: 725.724.4400	FIELD BOOK:	NONE
			<b>WSP</b>	SHEET No:	B-213
				REV:	4604515
				S:	

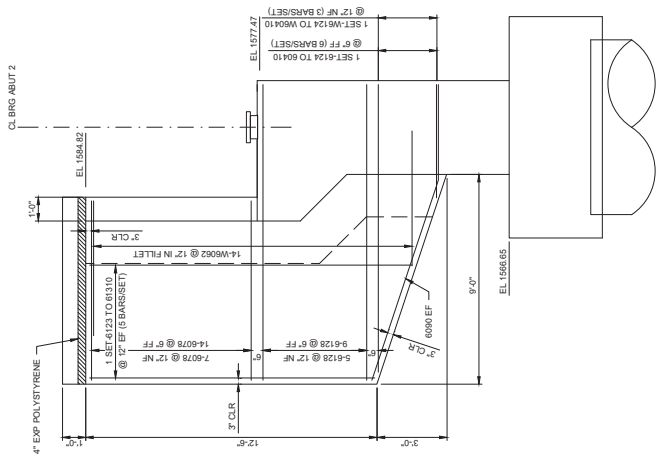
B-3415



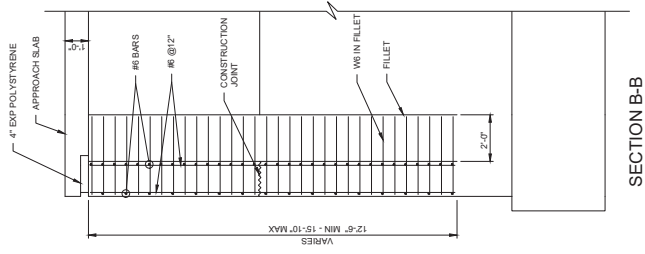




WINGWALL 4 (WW4) PLAN



WINGWALL 4 (WW4) ELEVATION



SECTION B-B



**HOLLYWOOD BOULEVARD EXTENSION PHASE II**  
 WETLANDS PARK TO VEGAS VALLEY DRIVE  
 LAS VEGAS WASH BRIDGE  
 WING WALL 4  
 CLARK COUNTY, NEVADA, DEPARTMENT OF PUBLIC WORKS

**90% PRELIMINARY SUBMISSION**  
 10/30/2025  
 SUBJECT TO CHANGE  
 NOT FOR CONSTRUCTION

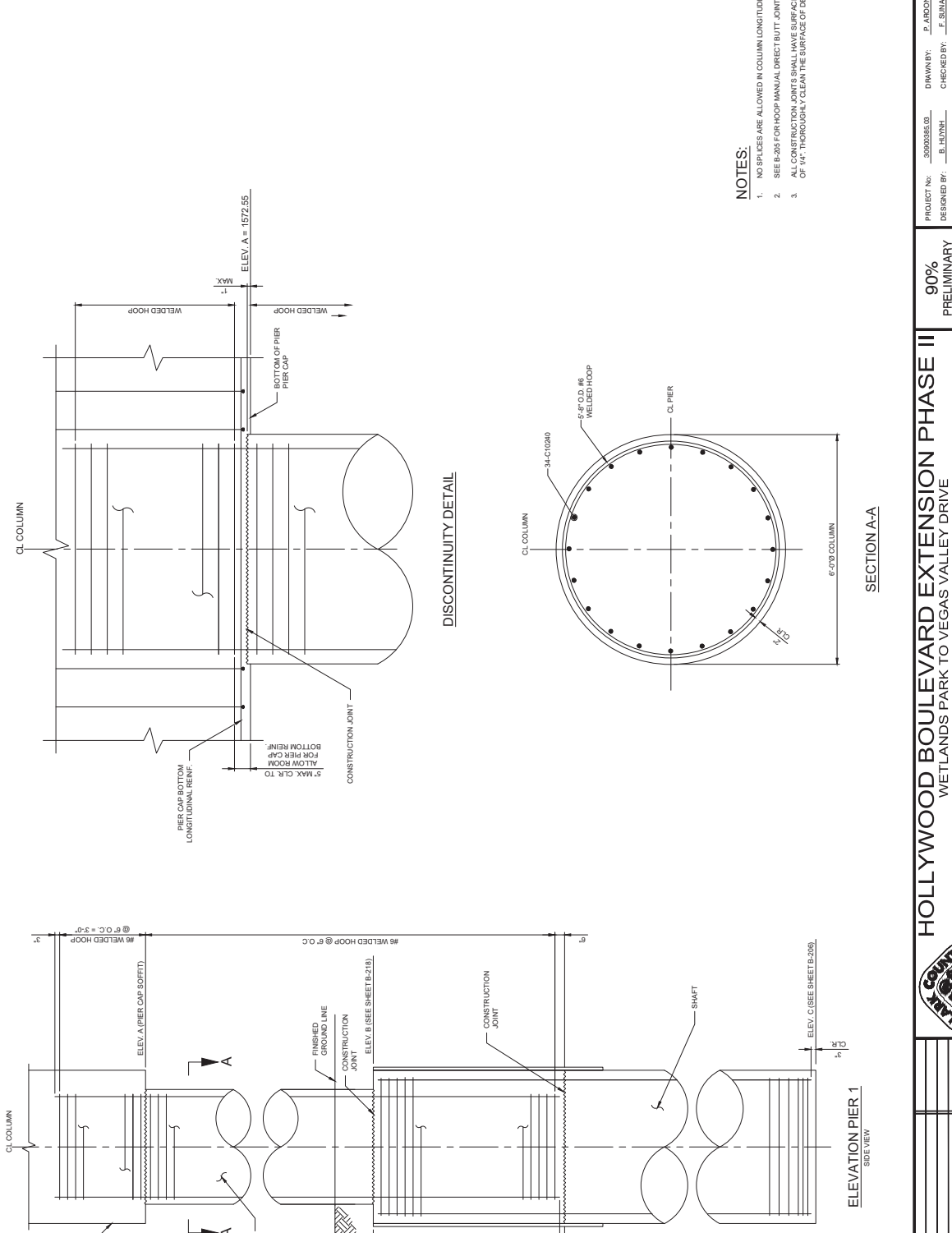
PROJECT No:	30200385.03	DRAWN BY:	P. ANDONJAP	SCALE:	
DESIGNED BY:	B. HUNN	CHECKED BY:	F. SARGO	HORIZ:	NONE
APPROVED BY:	Z. SHAI	DATE:	10/28/2025	VERT:	NONE
				FIELD BOOK:	NONE
				S:	

B-3415

**B-216**  
 05-05-15

**wsp**  
 300 South 4th Street, Suite 1200  
 Las Vegas, Nevada 89101  
 Phone: 725.724.4400

REV. NO.	DATE	DESCRIPTION	APPROVED



**NOTES:**

1. NO SPICES ARE ALLOWED IN COLUMN LONGITUDINAL REINFORCEMENT.
2. SEE B-205 FOR HOOP MANUAL DIRECT BUTT JOINT DETAILS.
3. ALL CONSTRUCTION JOINTS SHALL HAVE SURFACE INTENTIONALLY ROUGHENED TO AN AMPLITUDE OF 14", THOROUGHLY CLEAN THE SURFACE OF DEBRIS AND LANTANCE.