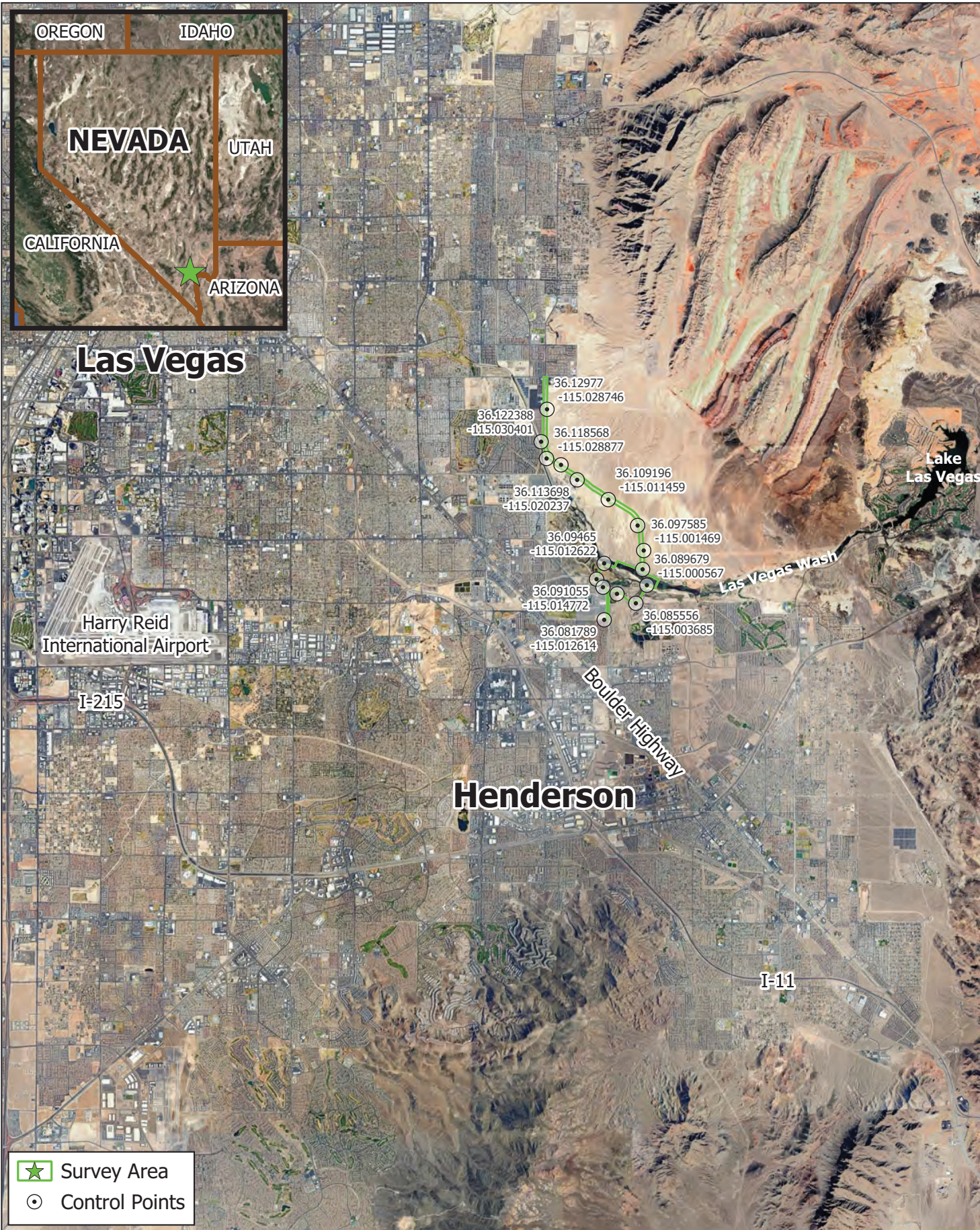




Appendix A – Project Location & Vicinity Mapping



WSP-Hollywood BLVD Survey Area Location

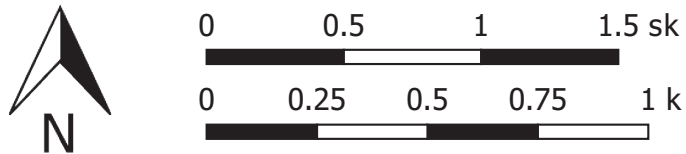


Scale:
1:32,000

Base Imagery: Google Satellite, February 2023
CRS: EPSG:3857
Map Made: 09/12/2024 ASP



V Sn-Hollywood BLM Survey Area





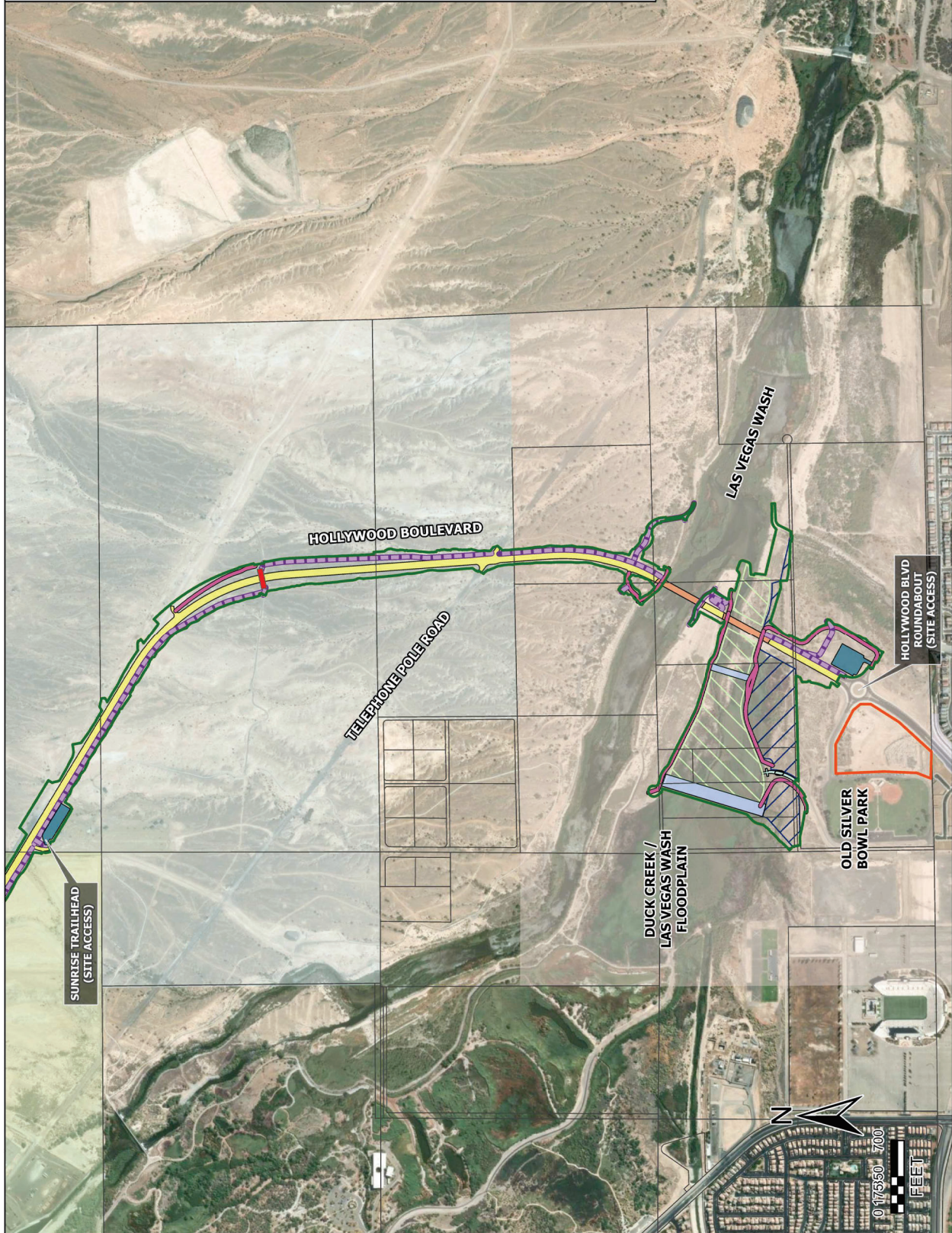
Appendix C – Site Laydown Map

HOLLYWOOD BLVD EXTENSION PHASE II

LEGEND

- PARCELS
- LIMITS OF DISTURBANCE
- STAGING AREA
- PROPOSED IMPROVEMENTS
- PAVED ROADWAY
- BRIDGES
- WEIRS
- SILVERBOWL NORTH CHANNEL EXTENSION
- PARKING LOT
- WILDLIFE CROSSING BRIDGE
- WETLAND VEGETATION
- UPLAND VEGETATION
- MAINTENANCE ROADS
- TRAILS
- PROPERTY OWNER
- BUREAU OF LAND MANAGEMENT
- BUREAU OF RECLAMATION
- CLARK COUNTY
- COWIRD
- CITY OF HENDERSON

SITE LAYDOWN EXHIBIT



KEY MAP

HOLLYWOOD BLVD
ROUNDABOUT
(SITE ACCESS)

OLD SILVER
BOWL PARK

DUCK CREEK /
LAS VEGAS WASH
FLOODPLAIN

LAS VEGAS WASH

HOLLYWOOD BOULEVARD

TELEPHONE POLE ROAD

SUNRISE TRAILHEAD
(SITE ACCESS)



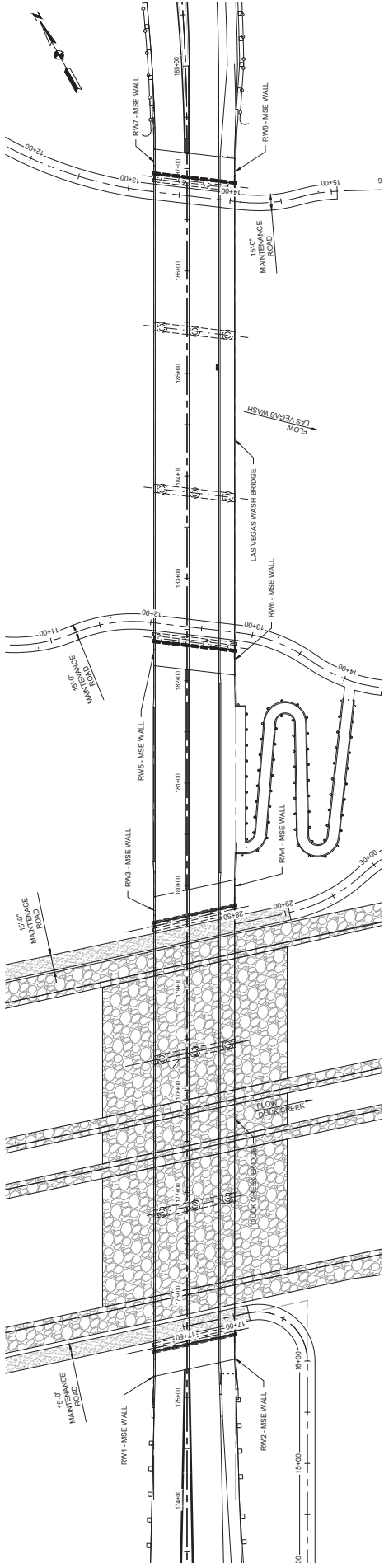


Appendix D – Temporary and Permanent Impacts Table

NWP	Aquatic Resource	AR Type	Type of Fill	Impact Duration	Linear Feet of Impact	Area Impact	Cubic Yards of Fill
14	Las Vegas Wash	RPW	Bridge Concrete	Permanent	80	641 sq ft	1,800
14	Wetland A	Wetland	Bridge Concrete	Permanent	N/A	321 sq ft	900
			Riprap/Concrete/ Roller Compacted Concrete (RCC)	Permanent	80	4,800 sq ft	4,800
14	UT-1 Duck Creek	RPW	Riprap/Concrete/ RCC	Permanent	80	3,900 sq ft	3,900
Total NWP 14 (Roadway)				Permanent	240	0.22 acre	11,400
27	Las Vegas Wash	RPW	Grading/Riprap	Permanent	25	0.01 acre	21
27	UT-1 Duck Creek	RPW	Grading/Riprap	Permanent	3,080	2.82 acres	2,360
			RCC	Permanent	70	0.07 acre	1,165
			Sheet Piling	Permanent	45	90 sq ft	N/A
27	Duck Creek	RPW	Grading/Riprap	Permanent	2,370	0.27 acre	4,080
			RCC	Permanent	42	0.01 acre	20
			Sheet Piling	Permanent	6	12 sq ft	N/A
27	Wetland A	Wetland	Grading/Riprap	Permanent	N/A	15.72 acres	23,360
			RCC	Permanent	N/A	1.79 acres	26,750
			Sheet Piling	Permanent	930	1,860 sq ft	N/A
Total NWP 27 (Duck Creek Enhancements)				Permanent	6,648	20.74 acres	57,756
33	Las Vegas Wash	RPW	BMPs	Temporary	N/A	0.40 acre	N/A
			Crushed Rock (work pads)	Temporary	N/A	1.20 acres	26,750
33	UT-1 Duck Creek	RPW	BMPs	Temporary	N/A	0.30 acre	N/A
33	Duck Creek	RPW	BMPs	Temporary	N/A	0.20 acre	N/A
33	Wetland A	Wetland	BMPs	Temporary	N/A	0.30 acre	N/A
Total NWP 33 (All Temporary Impacts)				Temporary	N/A	2.4 acres	26,750



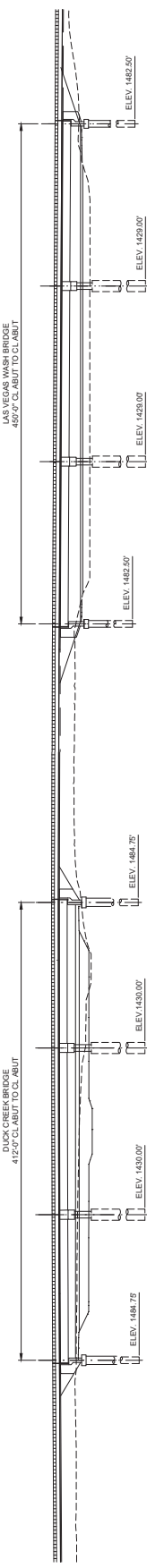
Appendix E – Project Plans



PLAN

NOTES:

1. FOR DUCK CREEK BRIDGE, SEE B-100 SHEETS
2. FOR LAS VEGAS WASH BRIDGE, SEE B-200 SHEETS
3. FOR RETAINING WALLS, SEE RW SHEETS



ELEVATION

B-3414

SHEET NO.	SCALE
B-100	NONE
300 OF 315	HORIZ: NONE
	VERT: NONE
	FIELD BOOK NONE
	S. NONE

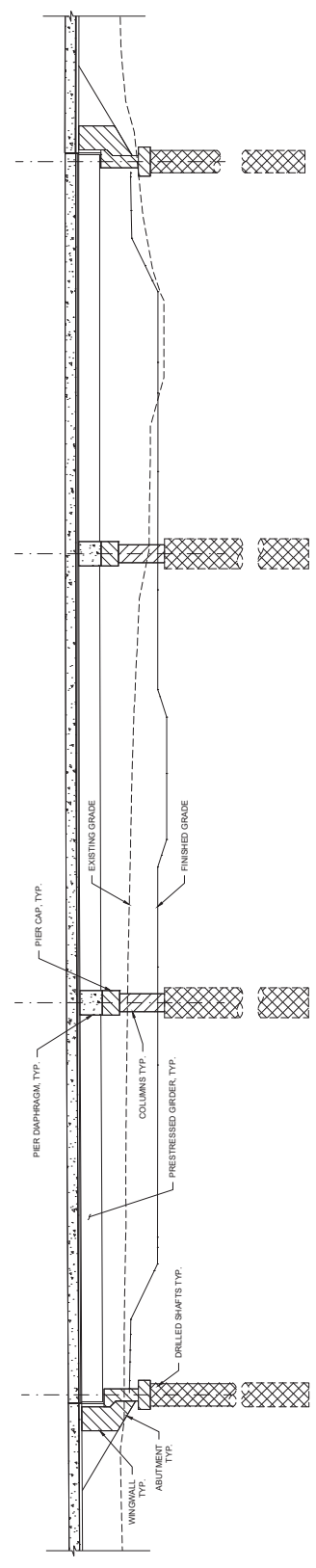
PROJECT NO.	DRAWN BY	J. JAVIER
30020385.03	CHECKED BY	F. SALASO
DESIGNED BY	B. HUNN	DATE
APPROVED BY	J. SMITH	10/28/2025

90% PRELIMINARY SUBMISSION
 10/30/2025
 SUBJECT TO CHANGE
 NOT FOR CONSTRUCTION

HOLLYWOOD BOULEVARD EXTENSION PHASE II
 WETLANDS PARK TO VEGAS VALLEY DRIVE
 DUCK CREEK AND LAS VEGAS WASH BRIDGE KEY PLAN AND ELEVATION
 CLARK COUNTY, NEVADA, DEPARTMENT OF PUBLIC WORKS



REV. NO.	DATE	DESCRIPTION	APPROVED



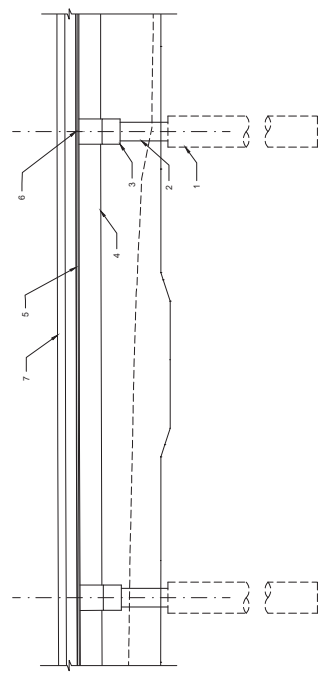
CONCRETE CLASSIFICATION DIAGRAM
 SCALE: NTS

- LEGEND**
- CLASS 5 DRILLED SHAFT f=5,000 PSI @ 28 DAYS
 - CLASS 4 MODIFIED MAJOR CONCRETE f=4,500 PSI @ 28 DAYS PIER CAP, PIER CAP AND ABUTMENT
 - CLASS 4 MODIFIED MAJOR CONCRETE f=4,500 PSI @ 28 DAYS DECK, APPROACH SLAB, ABUTMENT AND PIER DAMPHRAGM, MEDIAN, BARRIERS
 - PRESTRESSED GIRDER, SEE GIRDER DETAILS FOR PRESTRESSED GIRDER CONCRETE
 - CLASS 0 MODIFIED MAJOR CONCRETE f=4,500 PSI @ 28 DAYS COLUMNS

CONCRETE PLACEMENT SEQUENCE:

1. PLACE DRILLED SHAFTS.
2. PLACE COLUMNS AT PIERS, STEWART ABUTMENTS.
3. PLACE PIERCAPS.
4. PLACE GIRDERS AND STEEL INTERMEDIATE DAMPHRAGMS.
5. PLACE DECK UP TO CONSTRUCTION JOINT AND CONSTRUCT ABUTMENT DAMPHRAGM.
6. PLACE PIER DAMPHRAGM AND REMAINING DECK.
7. PLACE BARRIER RAIL (EAST, WEST, AND INTERIOR) AND MEDIANS.

CONCRETE PLACING SCHEDULE
 SCALE: NTS



HOLLYWOOD BOULEVARD EXTENSION PHASE II
 WETLANDS PARK TO VEGAS VALLEY DRIVE
 DUCK CREEK BRIDGE
 CONCRETE CLASSIFICATION
 CLARK COUNTY, NEVADA, DEPARTMENT OF PUBLIC WORKS

90% PRELIMINARY SUBMISSION
 10/30/2025
 SUBJECT TO CHANGE
 NOT FOR CONSTRUCTION

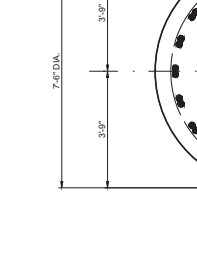
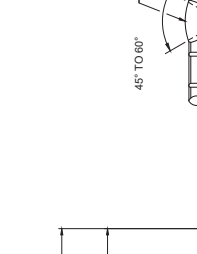
wsp
 300 South 4th Street, Suite 1200
 Las Vegas, Nevada 89101
 Phone: 725.724.4400

PROJECT No. 302020385.03	DRAWN BY: J. JAVNES	SCALE
DESIGNED BY: B. HUDN	CHECKED BY: F. SALASO	HORIZ: NONE
APPROVED BY: F. SALASO	DATE: 10/28/2025	VERT: NONE
		FIELD BOOK: NONE
		S: NONE

SHEET No. **B-104**
 304 OF 315

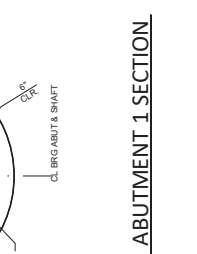
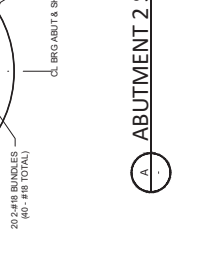
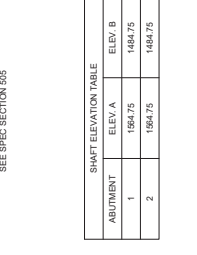
REV. NO.	DATE	DESCRIPTION	APPROVED

B3414



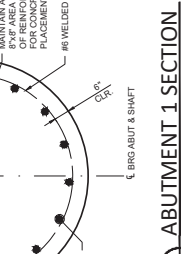
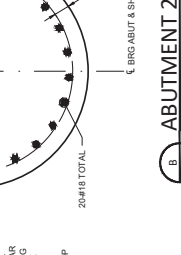
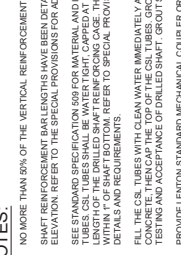
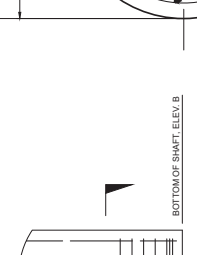
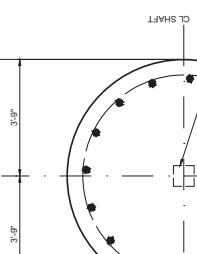
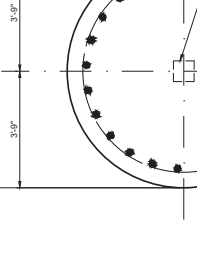
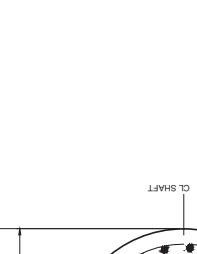
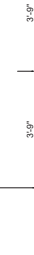
SHaft ELEVATION TABLE

ABUTMENT	ELEV. A	ELEV. B
1	1964.75	1484.75
2	1964.75	1484.75



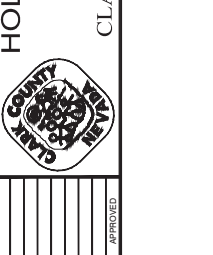
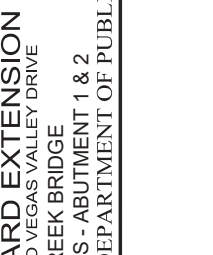
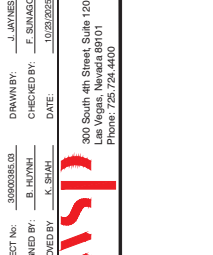
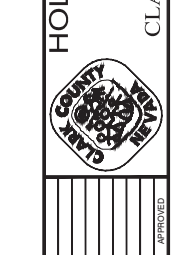
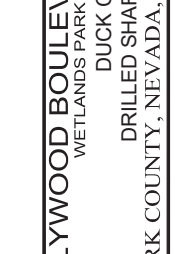
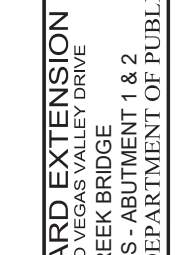
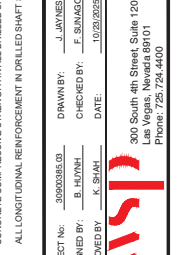
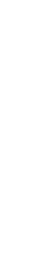
SHaft ELEVATION TABLE

ABUTMENT	ELEV. A	ELEV. B
1	1964.75	1484.75
2	1964.75	1484.75



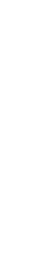
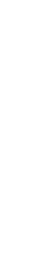
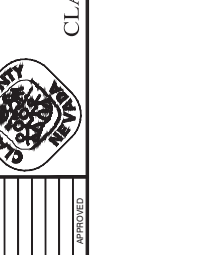
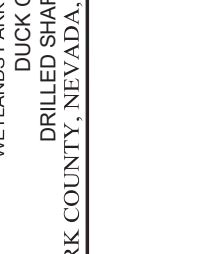
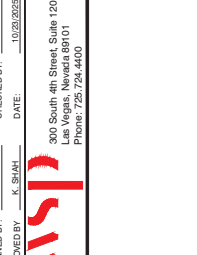
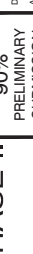
SHaft ELEVATION TABLE

ABUTMENT	ELEV. A	ELEV. B
1	1964.75	1484.75
2	1964.75	1484.75



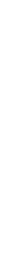
SHaft ELEVATION TABLE

ABUTMENT	ELEV. A	ELEV. B
1	1964.75	1484.75
2	1964.75	1484.75



SHaft ELEVATION TABLE

ABUTMENT	ELEV. A	ELEV. B
1	1964.75	1484.75
2	1964.75	1484.75



SHaft ELEVATION TABLE

ABUTMENT	ELEV. A	ELEV. B
1	1964.75	1484.75
2	1964.75	1484.75



SHaft ELEVATION TABLE

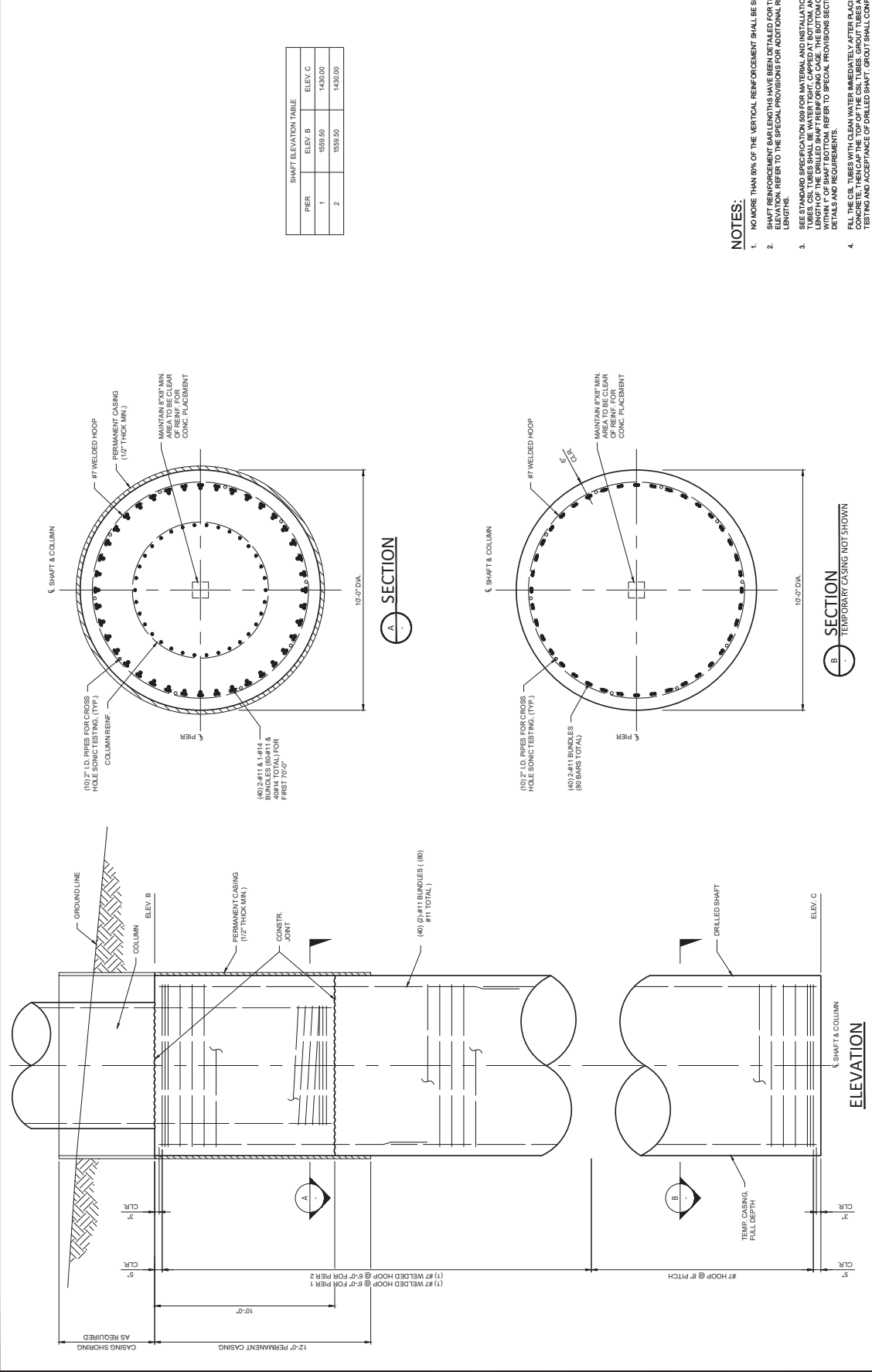
ABUTMENT	ELEV. A	ELEV. B
1	1964.75	1484.75
2	1964.75	1484.75

SHaft ELEVATION TABLE

ABUTMENT	ELEV. A	ELEV. B
1	1964.75	1484.75
2	1964.75	1484.75

SHaft ELEVATION TABLE

ABUTMENT	ELEV. A	ELEV. B
1</		



SHAFT ELEVATION TABLE

PIER	ELEV. B	ELEV. C
1	1559.50	1430.00
2	1559.50	1430.00

- NOTES:**
- NO MORE THAN 50% OF THE VERTICAL REINFORCEMENT SHALL BE SPACED AT ANY ONE LOCATION. SHAFT REINFORCEMENT BAR LENGTHS HAVE BEEN DETAILED FOR THE ESTIMATED SHAFT TIP LENGTH. REFER TO THE SPECIAL PROVISIONS FOR ADDITIONAL REINFORCING BAR CAGE LENGTHS.
 - SEE STANDARD SPECIFICATION 509 FOR MATERIAL AND INSTALLATION REQUIREMENTS. FOR CS, TUBES CS, TUBES SHALL BE WATER TIGHT, CAPPED AT BOTTOM, AND SECURELY TIED ALONG THE LENGTH OF THE DRILLED SHAFT REINFORCING CAGE. THE BOTTOM OF THE CS, TUBES SHALL COME IN CONTACT WITH THE DRILLED SHAFT REINFORCING CAGE. REFER TO SPECIAL PROVISIONS SECTION 509.02.1 FOR ADDITIONAL DETAILS AND REQUIREMENTS.
 - FILL THE CS, TUBES WITH CLEAN WATER IMMEDIATELY AFTER PLACING THE DRILLED SHAFT CONCRETE. THEN CAP THE TOP OF THE CS, TUBES. GROUT TUBES AFTER CROSSHOLE SONAR LONG TESTING AND ACCEPTANCE OF DRILLED SHAFT. GROUT SHALL CONFORM TO SECTION 509.03.1.4.

B3414

PROJECT No: 30200385.03 DRAWN BY: J. JAVIER
 DESIGNED BY: B. HUNN CHECKED BY: F. SALASO
 APPROVED BY: J. GIBBI DATE: 10/23/2025

B-106
 306.05.515

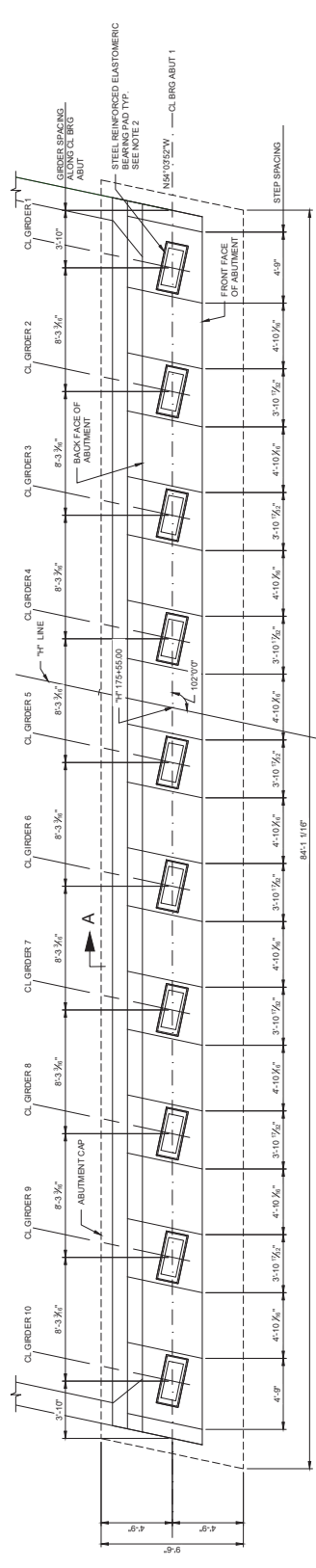
SCALE: NONE
 HORIZ: NONE
 VERT: NONE
 FIELD BOOK: NONE

300 South 4th Street, Suite 1200
 Las Vegas, Nevada 89101
 Phone: 725.724.4400

90% PRELIMINARY SUBMISSION
 10/30/2025
 SUBJECT TO CHANGE
 NOT FOR CONSTRUCTION

HOLLYWOOD BOULEVARD EXTENSION PHASE II
 WETLANDS PARK TO VEGAS VALLEY DRIVE
 DUCK CREEK BRIDGE
 DRILLED SHAFTS - PIER 1 & 2
 CLARK COUNTY, NEVADA, DEPARTMENT OF PUBLIC WORKS

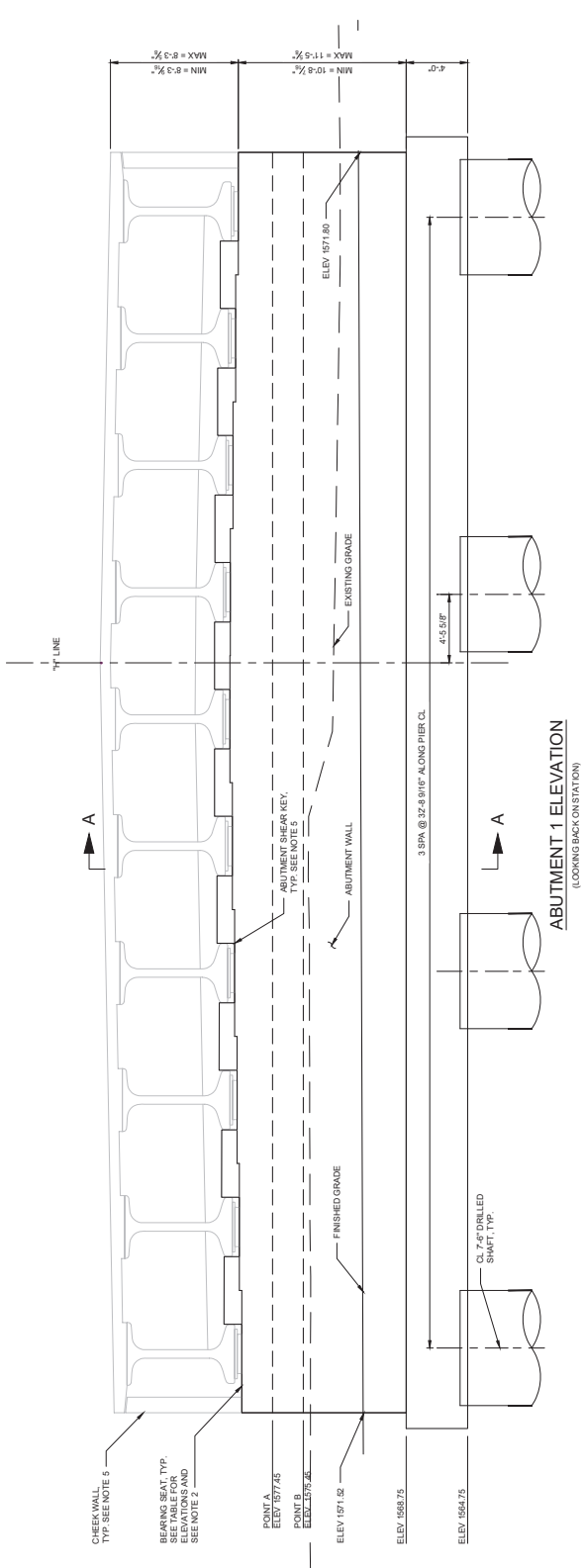
REV. NO.	DATE	DESCRIPTION	APPROVED



SEAT ELEVATION ABUT 1 CL

G1	G2	G3	G4	G5	G6	G7	G8	G9	G10	G11
1579.68	1578.86	1580.02	1580.19	1580.22	1580.06	1579.81	1579.76	1579.01	1579.46	

ABUTMENT 1 PLAN



- NOTES:
- SEE E-11 FOR SECTION A-A.
 - SEE E-128 FOR BEARING RECESS DETAILS.
 - SEE E-112 FOR WEEPHOLE DETAILS.
 - SEE E-124 FOR GIRDER LAYOUT.
 - SEE E-112 FOR ADDITIONAL DETAILS.

B3414

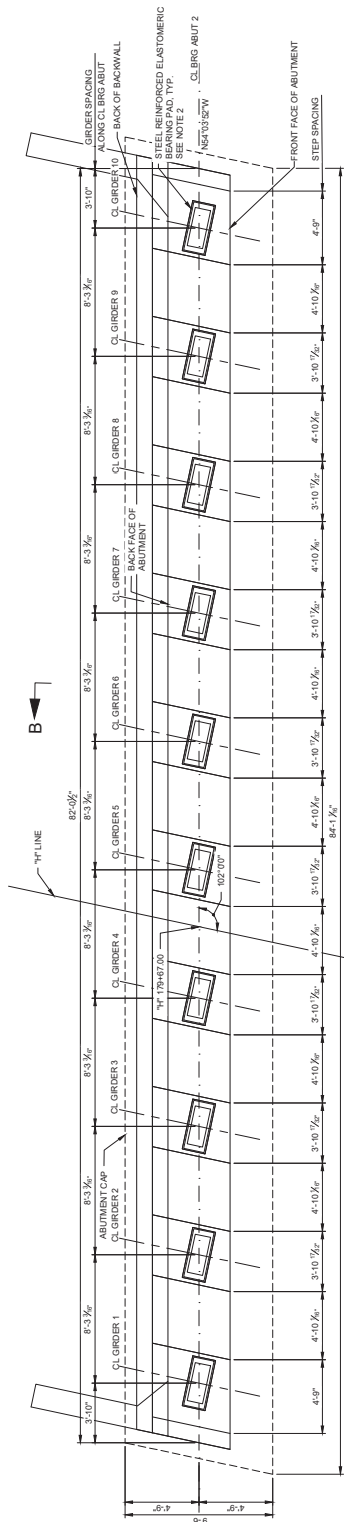
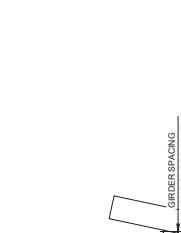
PROJECT NO.	30200385.03	DRAWN BY:	P. ANDONAP
DESIGNED BY:	B. HUDN	CHECKED BY:	F. SALADO
APPROVED BY:	F. SALADO	DATE:	10/28/2025

90% PRELIMINARY SUBMISSION 10/30/2025 SUBJECT TO CHANGE NOT FOR CONSTRUCTION

HOLLYWOOD BOULEVARD EXTENSION PHASE II
 WETLANDS PARK TO VEGAS VALLEY DRIVE
 DUCK CREEK BRIDGE
 ABUTMENT 1 - PLAN AND ELEVATION
 CLARK COUNTY, NEVADA, DEPARTMENT OF PUBLIC WORKS



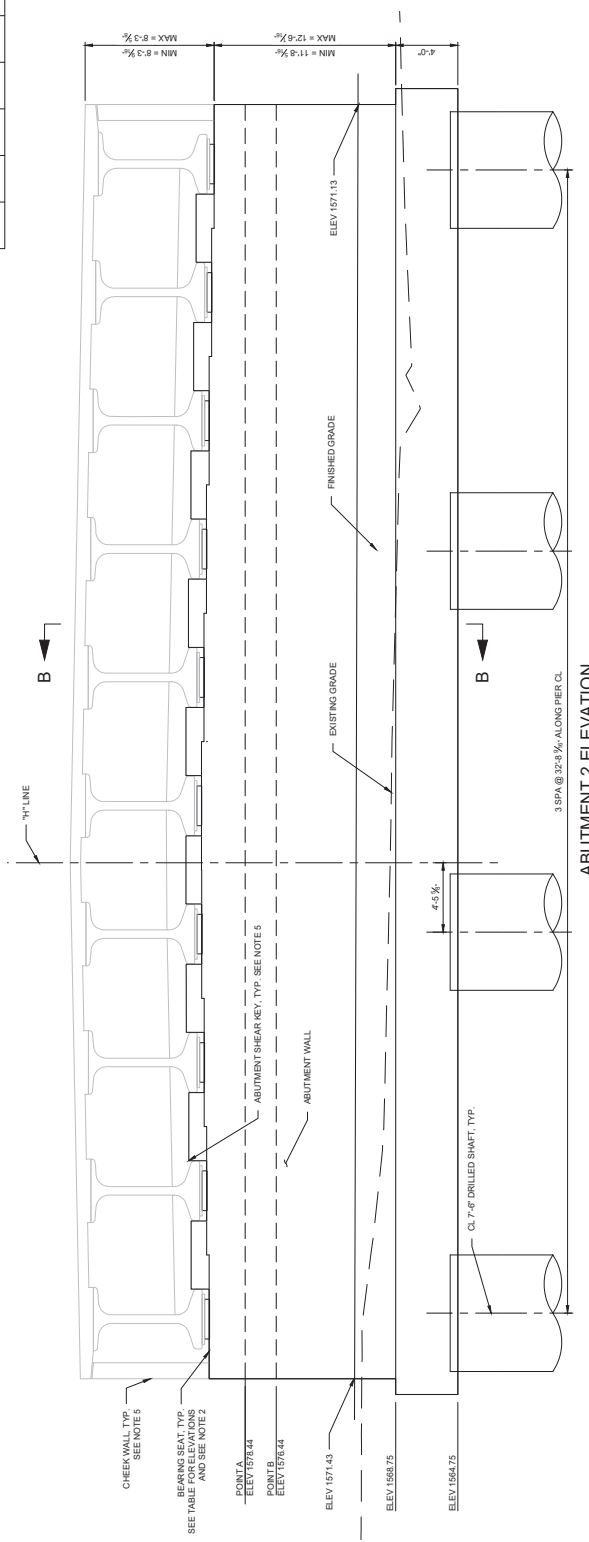
REV. NO.	DATE	DESCRIPTION	APPROVED



SEAT ELEVATION ABUT 2 CL

G1	G2	G3	G4	G5	G6	G7	G8	G9	G10
1580.76	1580.92	1581.08	1581.24	1581.26	1581.09	1580.93	1580.77	1580.60	1580.44

ABUTMENT 2 PLAN



ABUTMENT 2 ELEVATION

- NOTES:
1. SEE E-11 FOR SECTION A-A.
 2. SEE E-128 FOR BEARING RECESS DETAILS.
 3. SEE E-112 FOR WEEPCOLE DETAILS.
 4. SEE E-124 FOR GIRDER LAYOUT.
 5. SEE E-112 FOR ADDITIONAL DETAILS.

90% PRELIMINARY SUBMISSION
 10/30/2025
 SUBJECT TO CHANGE
 NOT FOR CONSTRUCTION

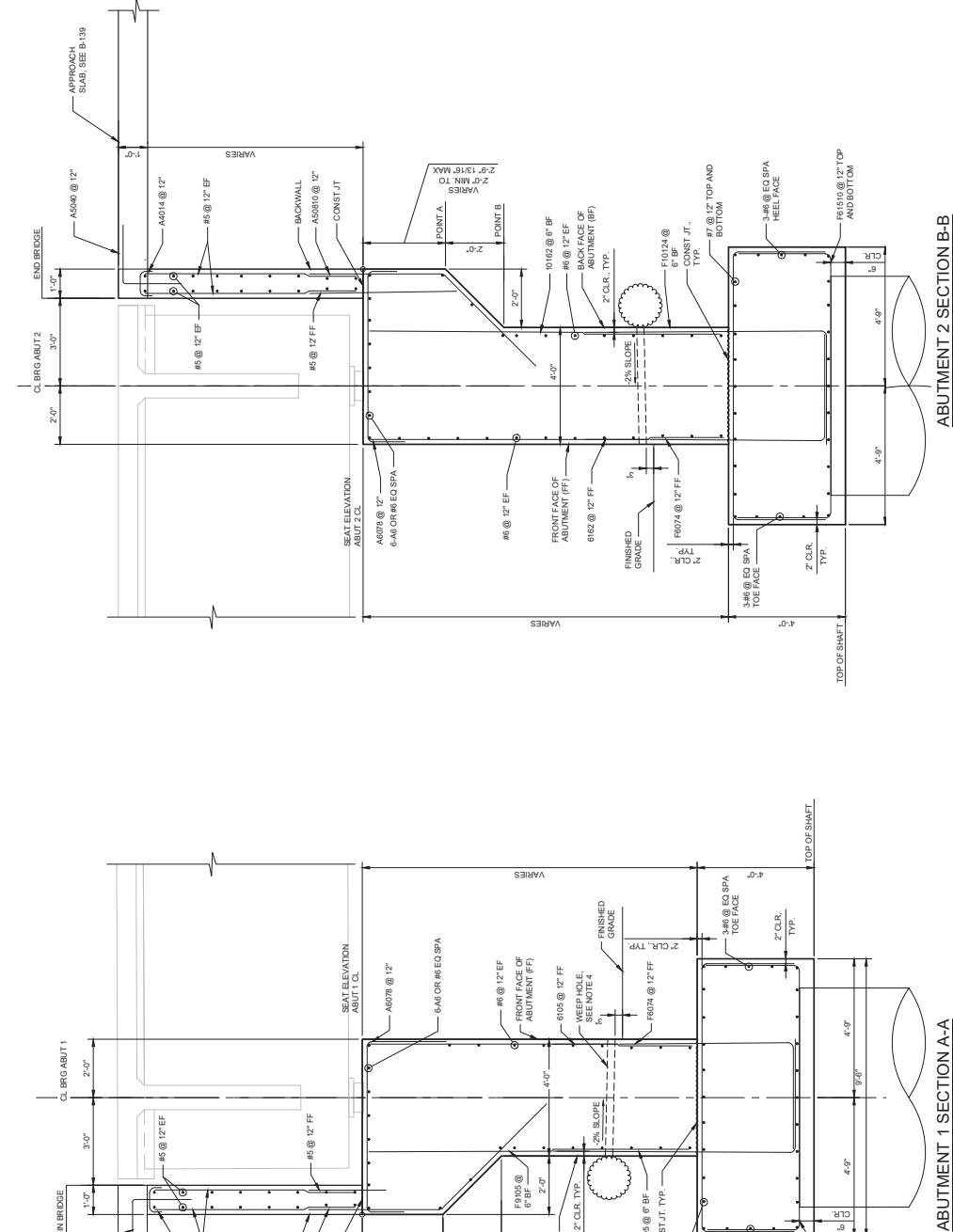
HOLLYWOOD BOULEVARD EXTENSION PHASE II
 WETLANDS DUCK VALLEY DRIVE
 DUCK VALLEY BRIDGE
 ABUTMENT 2 - PLAN AND ELEVATION
 CLARK COUNTY, NEVADA, DEPARTMENT OF PUBLIC WORKS

PROJECT NO: 30200285.03
 DRAWN BY: P. ANDONJAP
 DESIGNED BY: B. HUNN
 APPROVED BY: F. SHAIH
 CHECKED BY: F. SHAIH
 DATE: 10/28/2025

SHEET NO: **B-109**
 SCALE: NONE
 HORIZ: NONE
 VERT: NONE
 FIELD BOOK: NONE
 S: NONE

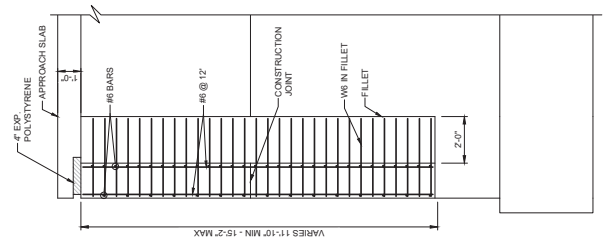
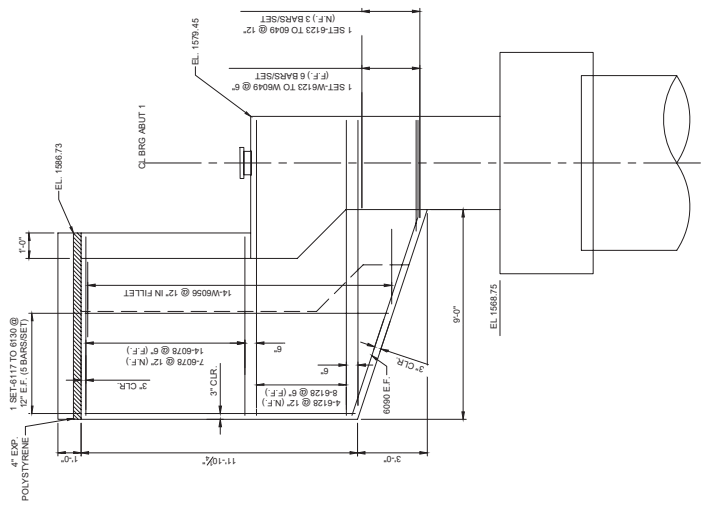
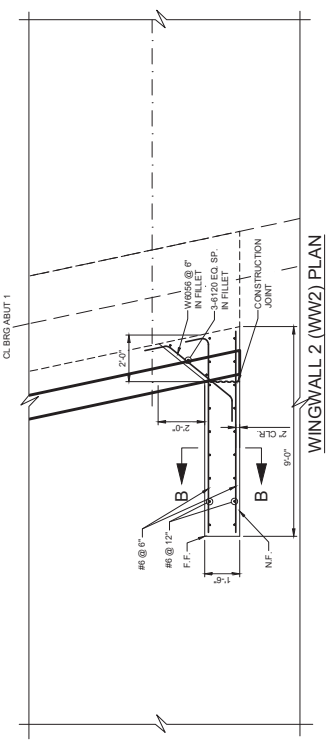
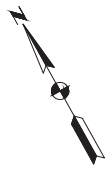
300 South 4th Street, Suite 1200
 Las Vegas, Nevada 89101
 Phone: 725.724.4400

APPROVED



- NOTES:**
- FOR SEAT ELEVATIONS, SEE B107 FOR ABUTMENT 1 AND B-09 FOR ABUTMENT 2.
 - FOR TOP OF SHAFT ELEVATIONS, SEE B-106.
 - SEE MOST STANDARD SPECIFICATION SECTION 207 FOR GRANULAR BACKFILL COMPACTION REQUIREMENTS.
 - SEE B412 FOR WEEP HOLE DETAIL.

<p>90% PRELIMINARY SUBMISSION 10/30/2025 SUBJECT TO CHANGE NOT FOR CONSTRUCTION</p>		<p>PROJECT NO: 30200385.03 DRAWN BY: P. ANDONJAP DESIGNED BY: B. HUNN APPROVED BY: J. SUMMERS CHECKED BY: F. SARGO DATE: 10/28/2025</p>	<p>SCALE: NONE HORIZ: NONE VERT: NONE FIELD BOOK: NONE S: S.</p>
<p>HOLLYWOOD BOULEVARD EXTENSION PHASE II WETLANDS PARK TO VEGAS VALLEY DRIVE DUCK CREEK BRIDGE ABUTMENT SECTIONS CLARK COUNTY, NEVADA, DEPARTMENT OF PUBLIC WORKS</p>		<p>WSP 300 South 4th Street, Suite 1200 Las Vegas, Nevada 89101 Phone: 725.724.4400</p>	<p>SHEET NO: B-111 OF 615</p>
<p>ABUTMENT 1 SECTION A-A</p>		<p>ABUTMENT 2 SECTION B-B</p>	
REV. NO.	DATE	DESCRIPTION	
		APPROVED	



WINGWALL 2 (WW2) ELEVATION

SECTION B-B



HOLLYWOOD BOULEVARD EXTENSION PHASE II
 WETLANDS PARK TO VEGAS VALLEY DRIVE
 DUCK CREEK BRIDGE
 WINGWALL 2
 CLARK COUNTY, NEVADA, DEPARTMENT OF PUBLIC WORKS

90% PRELIMINARY SUBMISSION
 10/30/2025
 SUBJECT TO CHANGE
 NOT FOR CONSTRUCTION

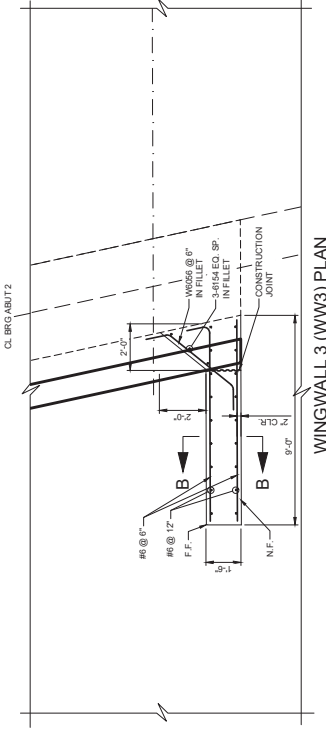
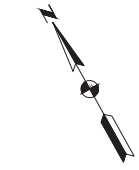
PROJECT NO.: 30020385.03
 DRAWN BY: J. JAVNES
 CHECKED BY: F. SALASO
 DESIGNED BY: B. HUDN
 APPROVED BY: T. SHARL
 DATE: 10/28/2025

300 South 4th Street, Suite 1200
 Las Vegas, Nevada 89101
 Phone: 725.724.4400

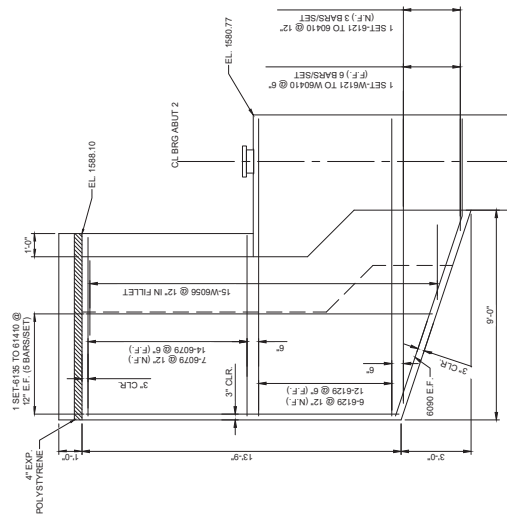
B3414

SHEET NO.	SCALE
B-114	NONE
404 OF 515	HORIZ: NONE
	VERT: NONE
	FIELD BOOK: NONE
	S: NONE

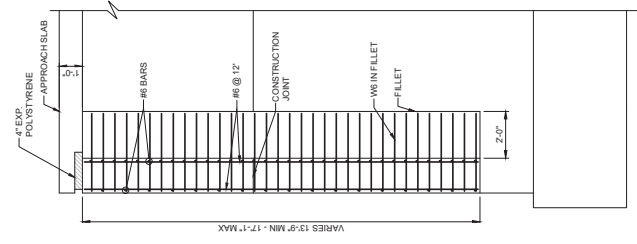
REV. NO.	DATE	DESCRIPTION	APPROVED



WINGWALL 3 (WW3) PLAN



WINGWALL 3 (WW3) ELEVATION



SECTION B-B

B3414

PROJECT No.	30200385.03	DRAWN BY:	J. JAVNES	SCALE	
DESIGNED BY:	B. HUDN	CHECKED BY:	F. SARGO	HORIZ:	NONE
APPROVED BY:	Z. SHARI	DATE:	10/23/2025	VERT:	NONE
				FIELD BOOK	NONE
				S.	S.

90% PRELIMINARY SUBMISSION
 10/30/2025
 SUBJECT TO CHANGE
 NOT FOR CONSTRUCTION

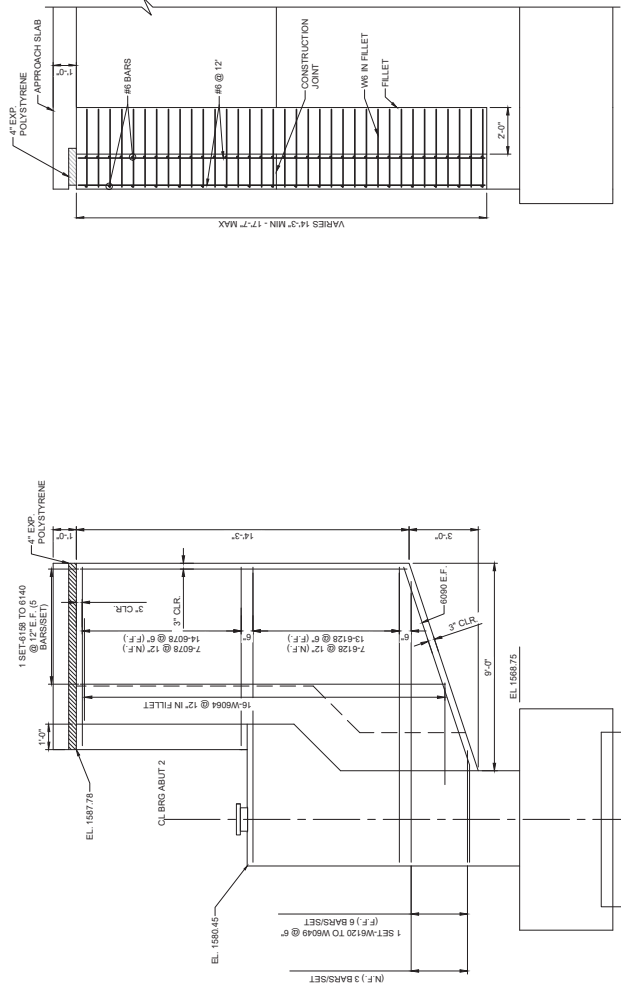
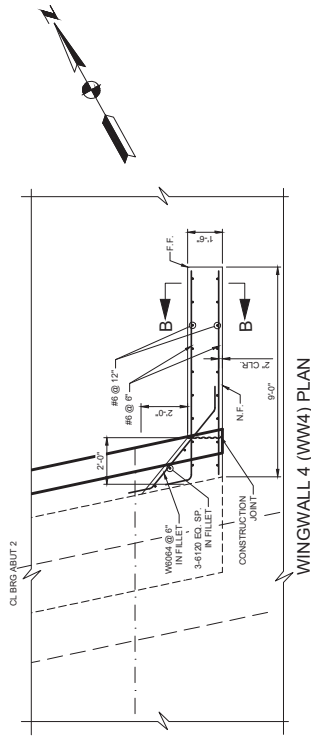


300 South 4th Street, Suite 1200
 Las Vegas, Nevada 89101
 Phone: 725.724.4400

HOLLYWOOD BOULEVARD EXTENSION PHASE II
 WETLANDS PARK TO VEGAS VALLEY DRIVE
 DUCK CREEK BRIDGE
 WING WALL 3
 CLARK COUNTY, NEVADA, DEPARTMENT OF PUBLIC WORKS




REV. NO.	DATE	DESCRIPTION	APPROVED



SECTION B-B

B3414

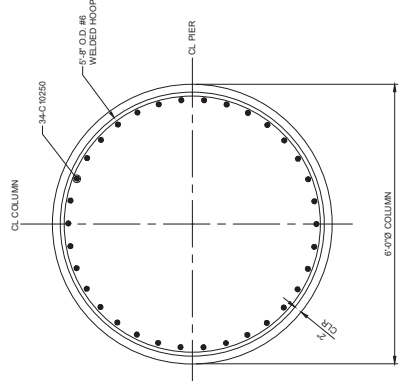
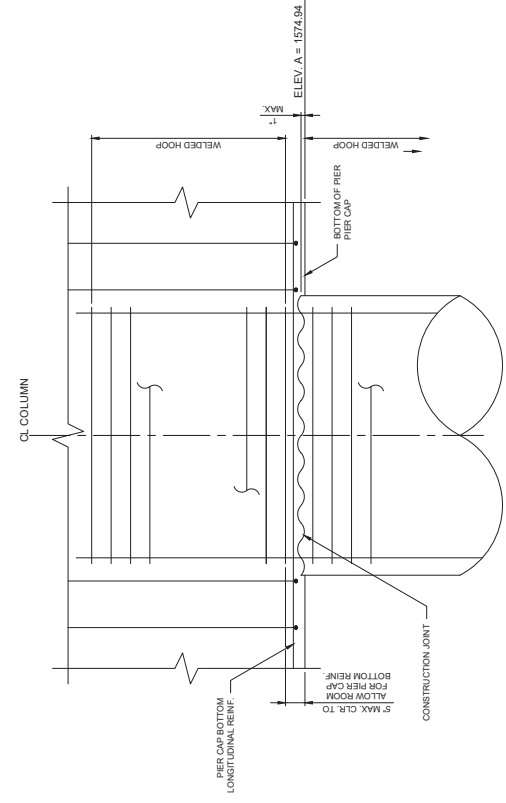
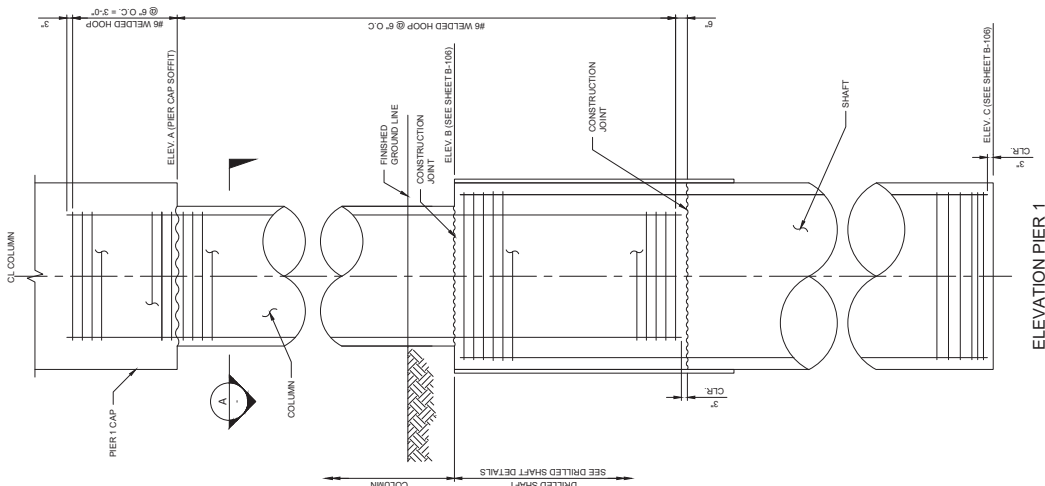
PROJECT No:	30200385.03	DRAWN BY:	J. JAVNES	CHECKED BY:	F. SANAGO	DATE:	10/28/2025
DESIGNED BY:	B. HUNN	APPROVED BY:	Z. SHARI	SCALE:	HORIZ: NONE	VERT: NONE	FIELD BOOK: NONE
				300 South 4th Street, Suite 1200 Las Vegas, Nevada 89101 Phone: 725.724.4400			

90%
PRELIMINARY
SUBMISSION
10/30/2025
SUBJECT TO CHANGE
NOT FOR CONSTRUCTION

HOLLYWOOD BOULEVARD EXTENSION PHASE II
 WETLANDS PARK TO VEGAS VALLEY DRIVE
 DUCK CREEK BRIDGE
 WING WALL 4
 CLARK COUNTY, NEVADA, DEPARTMENT OF PUBLIC WORKS



REV. NO.	DATE	DESCRIPTION	APPROVED



NOTES:

1. NO SPICES ARE ALLOWED IN COLUMN LONGITUDINAL REINFORCEMENT.
2. SEE B-105 FOR HOOP MANUAL DIRECT BUTT JOINT DETAILS.
3. ALL CONSTRUCTION JOINTS SHALL HAVE SURFACE INTENTIONALLY ROUGHENED TO AN AMPLITUDE OF 14" THOROUGHLY CLEAN THE SURFACE OF DEBRIS AND LANTANCE.

B3414

PROJECT NO:	30202385.03	DRAWN BY:	P. ANDONJAP	SCALE:	
DESIGNED BY:	B. HUNN	CHECKED BY:	F. SARGO	HORIZ:	NONE
APPROVED BY:	Z. SHAI	DATE:	10/28/2025	VERT:	NONE

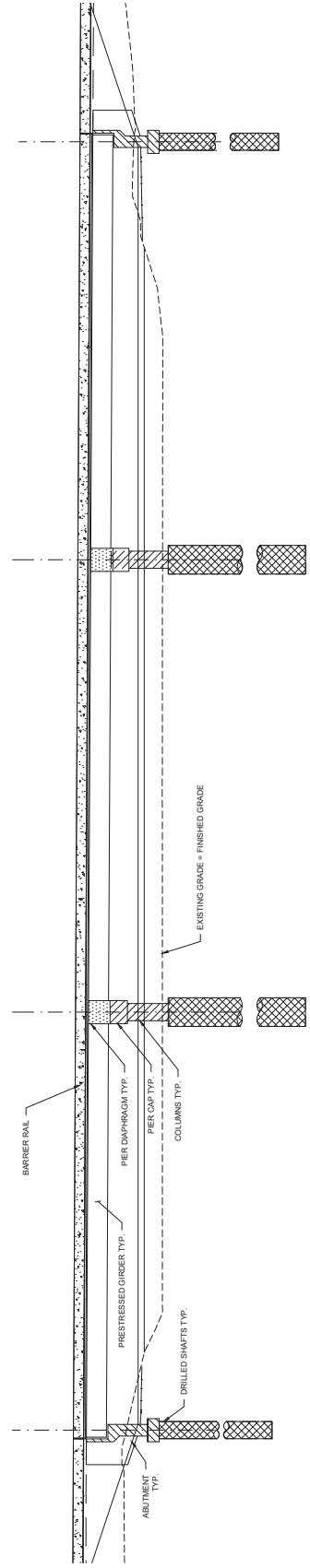
90% PRELIMINARY SUBMISSION
10/30/2025
SUBJECT TO CHANGE
NOT FOR CONSTRUCTION

HOLLYWOOD BOULEVARD EXTENSION PHASE II
WETLANDS PARK TO VEGAS VALLEY DRIVE
DUCK CREEK BRIDGE
PIER 2 - COLUMNS
CLARK COUNTY, NEVADA, DEPARTMENT OF PUBLIC WORKS



REV. NO.	DATE	DESCRIPTION	APPROVED

300 South 4th Street, Suite 1200
Las Vegas, Nevada 89101
Phone: 725.724.4400



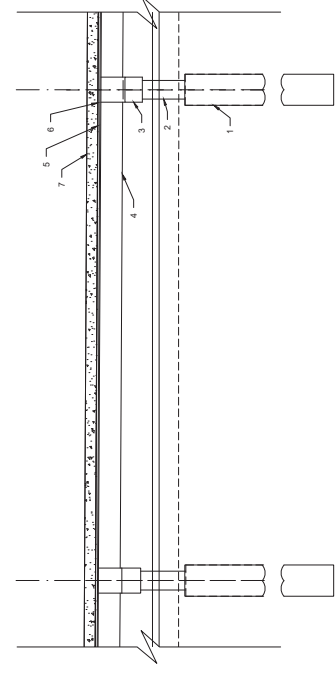
CONCRETE CLASSIFICATION DIAGRAM
SCALE: NOT TO SCALE

LEGEND

- CLASS 5 DRILLED SHAFT (f=5,000 PSI @ 28 DAYS)
- CLASS 2 INTERMEDIATE DAPHRAGM CONCRETE (f=4,500 PSI @ 28 DAYS) MEDIAN AND ABUTMENT
- CLASS 2 PIER DAMPHRAGM CONCRETE (f=4,500 PSI @ 28 DAYS) PIER DAMPHRAGM
- CLASS 2 APPROACH SLAB, ABUTMENT AND PIER DAMPHRAGMS, MEDIAN BARRIERS
- PRESTRESSED GIRDER, SEE GIRDER DETAILS FOR PRESTRESSED GIRDER CONCRETE
- CLASS 2 APPROACH SLAB AND PIER DAMPHRAGM CONCRETE (f=4,500 PSI @ 28 DAYS) COLUMNS

CONCRETE PLACEMENT SEQUENCE:

1. PLACE DRILLED SHAFTS.
2. PLACE COLUMNS AT PIERS, STEWART ABUTMENTS.
3. PLACE PIERCAPS.
4. PLACE GIRDERS AND STEEL INTERMEDIATE DAPHRAGMS.
5. PLACE DECK UP TO CONSTRUCTION JOINT AND CONSTRUCT ABUTMENT DAPHRAGM FOR DECK PLACING SEQUENCE. SEE B/21.
6. PLACE PIER DAMPHRAGM AND REMAINING DECK.
7. PLACE BARRIER RAIL (EAST, WEST, AND INTERIOR) AND MEDIANS.



CONCRETE PLACING SCHEDULE
SCALE: NOT TO SCALE

B-3415

PROJECT No: 30200385.03
 DESIGNED BY: B. HUNN
 APPROVED BY: J. SHARI

DRAWN BY: J. JAVNES
 CHECKED BY: F. SARGED
 DATE: 10/28/2025

SCALE: NONE
 HORIZ: NONE
 VERT: NONE
 FIELD BOOK: NONE
 S: NONE

B-204
 443 OF 515

wsp
 300 South 4th Street, Suite 1200
 Las Vegas, Nevada 89101
 Phone: 725.724.4400

90% PRELIMINARY SUBMISSION
 10/30/2025
 SUBJECT TO CHANGE
 NOT FOR CONSTRUCTION

HOLLYWOOD BOULEVARD EXTENSION PHASE II
 WETLANDS PARK TO VEGAS VALLEY DRIVE
 LAS VEGAS WASH BRIDGE
 CONCRETE CLASSIFICATION
 CLARK COUNTY, NEVADA, DEPARTMENT OF PUBLIC WORKS

REV. NO.	DATE	DESCRIPTION	APPROVED

RESISTANCE BUTT WELD DETAIL
SEE SPECIAL PROVISIONS FOR APPROVAL AND TESTING REQUIREMENTS

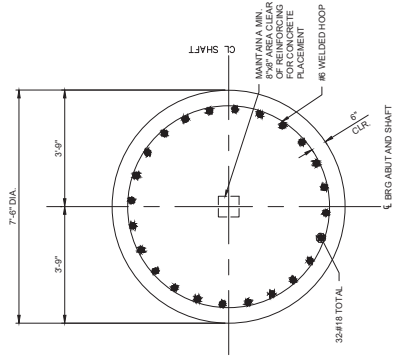


SINGLE-GROOVE WELD
AWS D1.4 FIGURE 3.2(A)

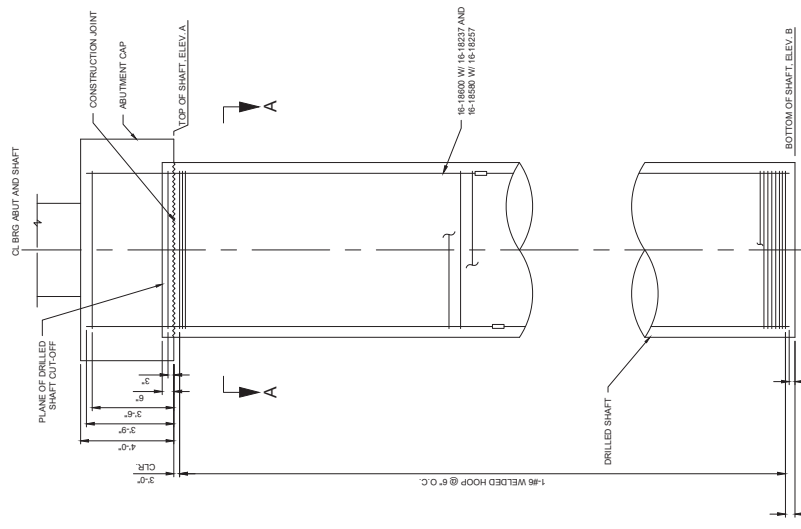
DOUBLE V-GROOVE WELD
AWS D1.4 FIGURE 3.2(B)

SHAFT ELEVATION TABLE		
ABUTMENT	ELEV. A	ELEV. B
1	1482.50	1482.50
2	1592.50	1482.50

HOOP WELDING DETAILS
ALL BACKING SHALL BE REMOVED.
SEE SPEC SECTION 505.



SECTION A-A



ELEVATION

ABUTMENT 1 SHOWN AND ABUTMENT 2 SIMILAR

- NOTES:**
- NO MORE THAN 50% OF THE VERTICAL REINFORCEMENT SHALL BE SPLICED AT ANY ONE LOCATION. ELEVATION, REFER TO THE SPECIAL PROVISIONS FOR ADDITIONAL REINFORCING BAR CAGE LENGTHS.
 - SHAFT REINFORCEMENT BAR LENGTHS HAVE BEEN DETAILED FOR THE ESTIMATED SHAFT TIP ELEVATION. REFER TO THE SPECIAL PROVISIONS FOR ADDITIONAL REINFORCING BAR CAGE LENGTHS.
 - SEE STANDARD SPECIFICATION 509 FOR MATERIAL AND INSTALLATION REQUIREMENTS FOR C.S.T. TUBES. THE DRILLED SHAFT REINFORCING CAGE SHALL BE INSTALLED WITHIN 1\"/>

B-3415

PROJECT No: 30200385.03 DRAWN BY: P. ANDONJAP CHECKED BY: F. SALASO
DESIGNED BY: B. HUDNALL DATE: 10/28/2025
APPROVED BY: F. SALASO

SCALE: NONE
HORIZ: NONE
VERT: NONE
FIELD BOOK: NONE

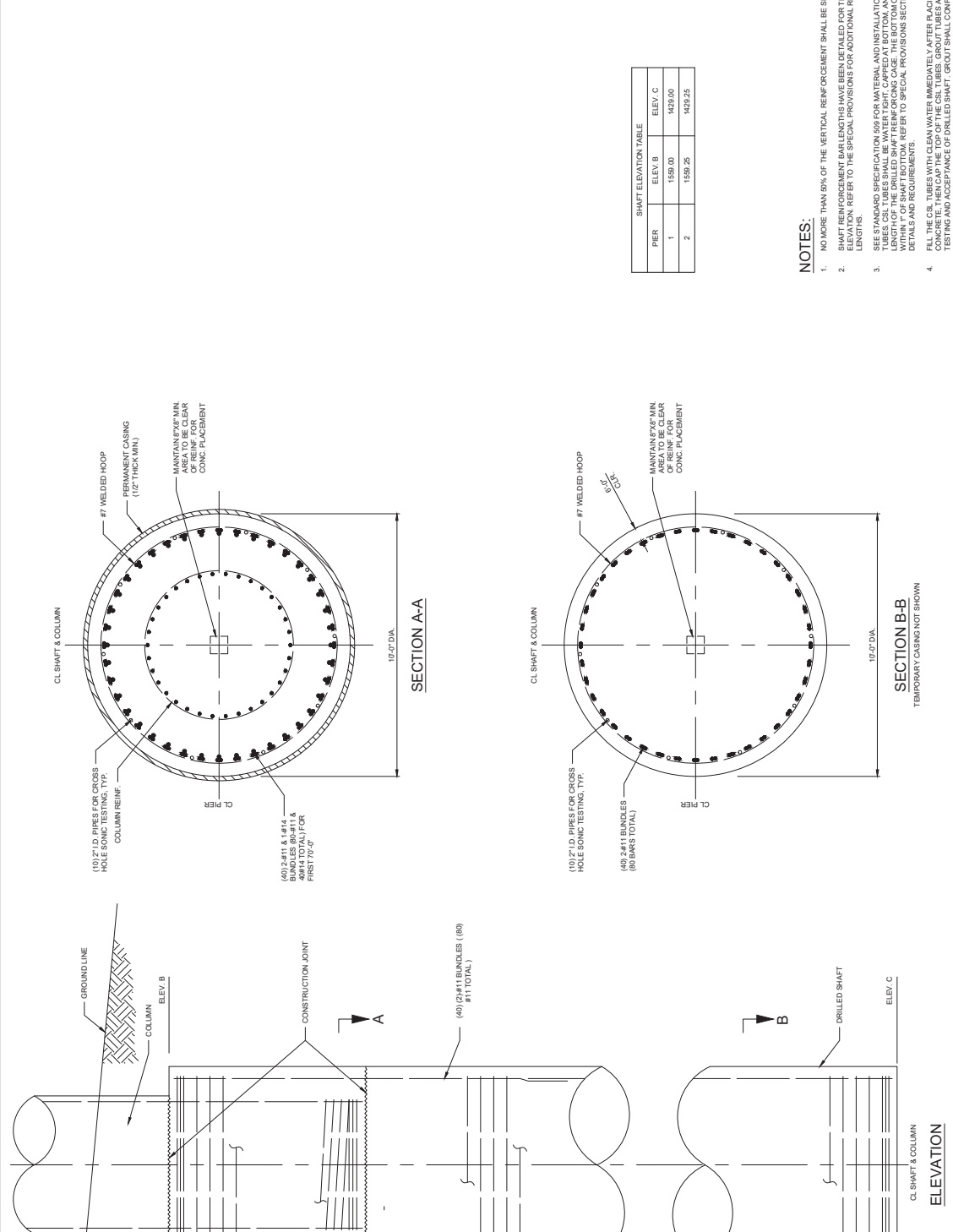
300 South 4th Street, Suite 1200
Las Vegas, Nevada 89101
Phone: 725.724.4400

90% PRELIMINARY SUBMISSION
10/30/2025
SUBJECT TO CHANGE
NOT FOR CONSTRUCTION

HOLLYWOOD BOULEVARD EXTENSION PHASE II
WETLANDS PARK TO VEGAS VALLEY DRIVE
LAS VEGAS WASH BRIDGE
DRILLED SHAFTS - ABUTMENT 1 & 2
CLARK COUNTY, NEVADA, DEPARTMENT OF PUBLIC WORKS



REV. NO.	DATE	DESCRIPTION	APPROVED



SHAFT ELEVATION TABLE		
PIER	ELEV. B	ELEV. C
1	1550.00	1429.00
2	1550.25	1429.25

NOTES:

- NO MORE THAN 50% OF THE VERTICAL REINFORCEMENT SHALL BE SPICED AT ANY ONE LOCATION. SHAFT REINFORCEMENT BAR LENGTHS HAVE BEEN DETAILED FOR THE ESTIMATED SHAFT TIP LOCATION. REFER TO THE SPECIAL PROVISIONS FOR ADDITIONAL REINFORCING BAR GAGE LENGTHS.
- SEE STANDARD SPECIFICATION 509 FOR MATERIAL AND INSTALLATION REQUIREMENTS. FOR CSL TUBES CSL TUBES SHALL BE WATER TIGHT, CAPPED AT BOTTOM, AND SECURELY TIED ALONG THE LENGTH OF THE DRILLED SHAFT REINFORCING CAGE. THE BOTTOM OF THE CSL TUBES SHALL COME IN ACCORDANCE WITH THE SPECIAL PROVISIONS SECTION 509.02.14 FOR ADDITIONAL DETAILS AND REQUIREMENTS.
- FILL THE CSL TUBES WITH CLEAN WATER IMMEDIATELY AFTER RACING THE DRILLED SHAFT CONCRETE. THEN CAP THE TOP OF THE CSL TUBES. GROUT TUBES AFTER CROSSHOLE SONIC LOG TESTING AND ACCEPTANCE OF DRILLED SHAFT. GROUT SHALL CONFORM TO SECTION 509.03.14.

B-3415

PROJECT NO: 30200385.03 DRAWN BY: P. ANDONJAP
 DESIGNED BY: B. HUNN CHECKED BY: F. SALADO
 APPROVED BY: J. SMITH DATE: 10/28/2025

WSP

300 South 4th Street, Suite 1200
 Las Vegas, Nevada 89101
 Phone: 725.724.4400

SCALE: NONE
 HORIZ: NONE
 VERT: NONE
 FIELD BOOK: NONE
 S: S.

B-206
 465-05-515

90% PRELIMINARY SUBMISSION
 10/30/2025
 SUBJECT TO CHANGE
 NOT FOR CONSTRUCTION

HOLLYWOOD BOULEVARD EXTENSION PHASE II
 WETLANDS PARK TO VEGAS VALLEY DRIVE
 LAS VEGAS WASH BRIDGE
 DRILLED SHAFTS - PIER 1 & 2
 CLARK COUNTY, NEVADA, DEPARTMENT OF PUBLIC WORKS



REV. NO.	DATE	DESCRIPTION	APPROVED

