



Plan for Cleanup of Groundwater at the Maryland Square PCE Site

NDEP Bureau of Corrective Actions

October, 2014

Proposed Plan for Cleanup Available for Public Review and Comment

The Nevada Division of Environmental Protection (NDEP) is the lead agency providing regulatory oversight for the investigation and cleanup of contaminated sites in Nevada. As part of the process for community involvement, the NDEP has prepared a Proposed Plan that describes the remedy proposed for cleanup of contaminated groundwater at the Maryland Square Perchloroethylene (PCE) Site, located at 3661 S. Maryland Parkway, in the former Maryland Square Shopping Center in Las Vegas (Figure 1).

The NDEP proposes to use “pump and treat” on the east side of the Boulevard Mall property as part of the remedy. This technology will reduce the amount of contaminated groundwater entering the residential neighborhood and start to reduce contaminant concentrations. Additional cleanup technologies are proposed for the western side of the Mall to further reduce concentrations of PCE in groundwater near the site of the former dry cleaner.

Public Comment Invited

The NDEP is providing this Fact Sheet to request your comments on the Proposed Plan for cleanup of contaminated groundwater at the Maryland Square PCE Site. Members of the public are encouraged to attend the public meeting on November 19, 2014 and provide comments on the preferred remedy and other remedies evaluated for the cleanup of contaminated groundwater at the Site.

Site Background

The plume of contaminated groundwater had its source at the former Al Phillips the Cleaner that was located in the former Maryland Square Shopping Center. The shopping center was demolished in 2006. The dry cleaning shop used PCE on site from 1969 to 2000. PCE that was spilled inside and outside of the dry cleaners migrated down through the concrete slab, into the soil and into the shallow groundwater, eventually forming what is known as a “plume.” This PCE plume currently extends approximately 6,000 feet nearly due east from the site of the former dry cleaner and runs beneath the Boulevard Mall and a portion of the residential neighborhood and golf course east of the Mall.

Comments Accepted

October 15, 2014 through
January 13, 2015

Submit Comments and Questions to:

Bureau of Corrective Actions, NDEP
901 S. Stewart St, Ste. 4001
Carson City, NV 89701
Phone: (775) 687-9368

Document Locations

NDEP’s Carson City office
(at address provided above)

NDEP’s Las Vegas office

2030 E. Flamingo Rd, Ste 230
Las Vegas, NV 89119
Phone: (702) 486-2850

View the entire **Proposed Plan** and the **Administrative Record** for the Maryland Square PCE Site at:
<http://ndep.nv.gov/pce/foia.htm>

NDEP’s BCA Website

<http://ndep.nv.gov/bca/index.htm>

Public Meeting

Wednesday, November 19, 2014
6:00 pm

Winchester Cultural Center
3130 McLeod Drive
Las Vegas, NV

What is PCE? The contaminant of concern is perchloroethylene, also known as perchloroethene, tetrachloroethylene, tetrachloroethene, “perc”, or PCE. It is a colorless, nonflammable liquid that does not occur naturally. PCE is a solvent and degreaser used by dry cleaners to clean fabrics; it is also found in some consumer products.

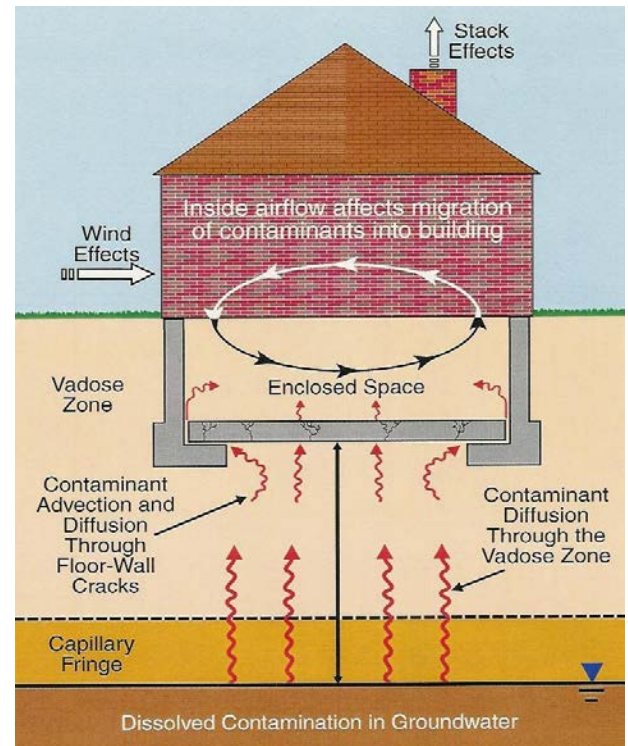
Source-Area Soil: Cleanup Completed in October, 2011

In September 2011, contaminated soil at the former dry cleaners was excavated and hauled to a permitted waste disposal facility. Excavated soils were sampled and analyzed prior to disposal. Additionally, a chemical oxidant was added to the bottom of the excavation to help treat shallow groundwater. The excavation was back-filled with clean soil and the site was re-graded in October 2011.

Groundwater: Why this Cleanup Matters

The plume of PCE-contaminated groundwater has the potential to adversely affect human health, primarily by contaminating indoor air in homes overlying the plume. PCE belongs to a group of chemicals known as “volatile organic compounds.” As the PCE volatilizes (evaporates) from groundwater, the vapors fill pore spaces in the subsurface soil. PCE vapors in the soil can then migrate upward and into buildings. This process is known as “vapor intrusion.”

When vapor intrusion occurs, PCE vapors can accumulate in the homes, where residents are exposed by breathing the contaminated indoor air. Testing of indoor air in potentially affected homes began in 2007, and mitigation systems have been offered to homeowners where concentrations of PCE exceeded the NDEP’s interim-action level for residential indoor air. Mitigation systems provide a short-term solution by intercepting the vapors before they can enter the home; however, the long-term solution is cleanup of the contaminated groundwater.



What Happens Next

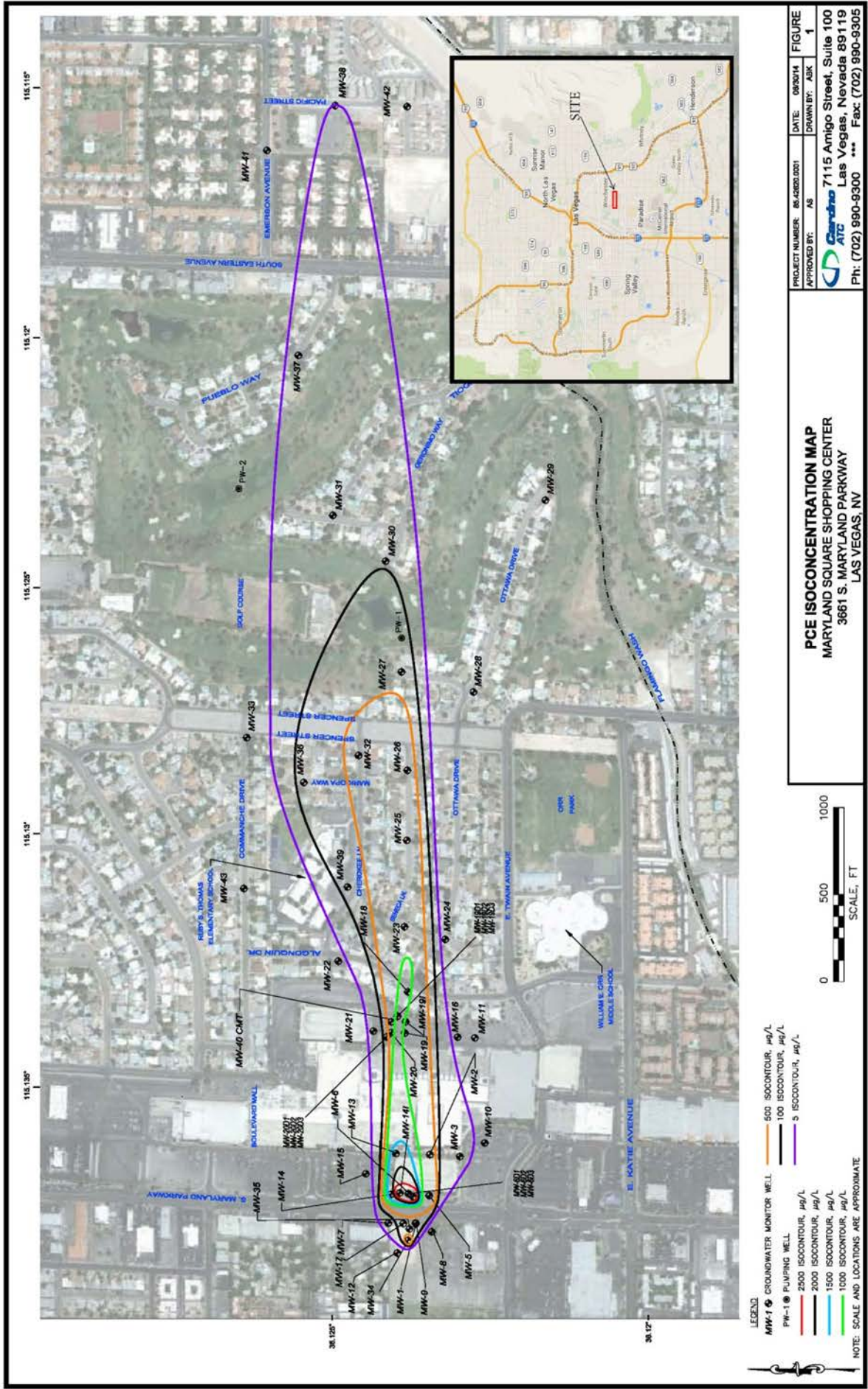
Comments received on the Proposed Plan during the public comment period (**October 15, 2014 through January 13, 2015**) and at the Community Meeting (**Wednesday, November 19, 2014** at 6:00 pm at the Winchester Cultural Center, 3103 McLeod Drive, Las Vegas) will be addressed and included in a Record of Decision (ROD) prepared by the NDEP. Following receipt of public comments, the NDEP selects a remedy and documents the selected remedy in a ROD. The ROD serves the following functions:

- It describes the technical parameters of the remedy, specifying the methods selected to protect human health and the environment including treatment, engineering, and institutional controls, as well as cleanup levels.
- It provides the public with a consolidated summary of information about the site and the chosen remedy, including the rationale behind the selection.

The Responsible Party is paying for cleanup of the groundwater, while the NDEP is providing regulatory oversight of the work. Additional characterization of the treatment areas and preparation of engineering designs of the remedy components must be completed prior to construction and startup of the remediation systems. The current estimate of time to complete these preparatory steps indicates the remedy will be in place in by the end of 2015.

The Proposed Plan summarizes information that can be found in greater detail in the case file and Administrative Record for the Site. The full Proposed Plan and Administrative Record are available in hard copy in the Carson City office of the NDEP and on-line at: http://ndep.nv.gov/pce/maryland_square.htm Hard copies of selected documents, including the Proposed Plan, are also available in the Las Vegas office of the NDEP (office locations are provided on the front page of this Fact Sheet).

Figure 1. Map showing extent of the Maryland Square PCE plume in shallow groundwater





3173 BCA
Nevada Division of Environmental Protection
Attn: Bureau of Corrective Actions
901 S. Stewart St, Suite 4001
Carson City, NV 89701

Nevada Division of Environmental Protection

Announcement of Plan for
Cleanup of Groundwater at
the Maryland Square PCE Site

October 2014

Public Comment Period

October 15, 2014 through January 13, 2015

Public Meeting

Wednesday, November 19, 2014
6:00 pm

Winchester Cultural Center
3130 McLeod Drive
Las Vegas, NV

Para recibir esta ficha informativa (*Plan de Acción para limpiar aguas subterráneas en la zona de contaminación con PCE de la Plaza Maryland Square*) o información en Español, por favor contacte a:

Alexi Lanza, P.E.

Teléfono: (775) 687-9547

Correo Electrónico: alanza@ndep.nv.gov

Provea su nombre y dirección y le mandaremos información en Español. Para leer y descargar información en Español, también puede ir al siguiente sitio de internet:

http://ndep.nv.gov/pce/maryland_square.htm