



1. TRAFFIC LOADING IS HS-20.
2. ALL MATERIAL TO BE FACTORY PAINTED.
3. PER NVDOT STD DTL R-7.1.2 (617).

SCALE: NTS



PRELIMINARY
NOT FOR CONSTRUCTION



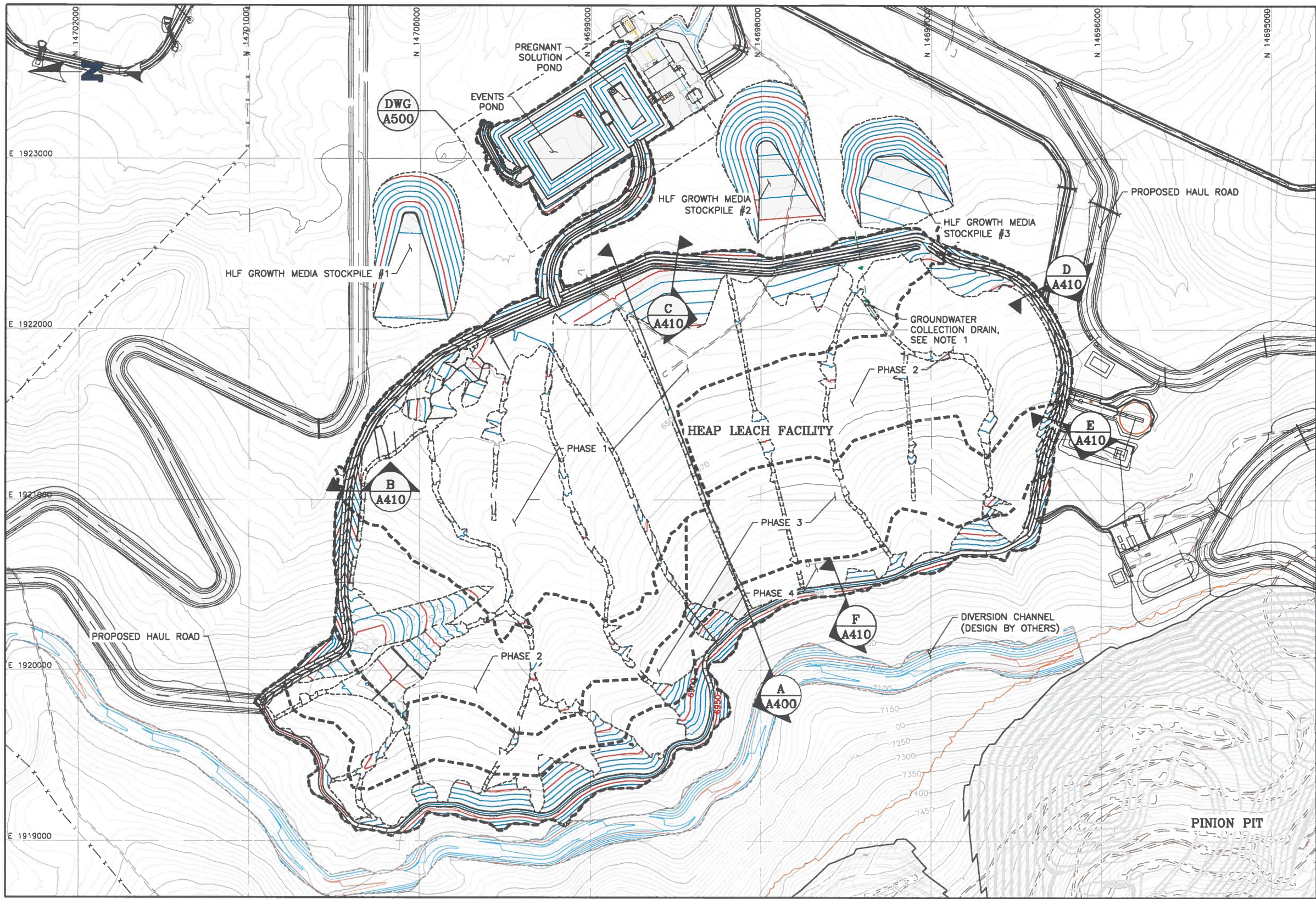
ARCHITECTURE
ENGINEERING
CONSTRUCTION MANAGEMENT

SM M3ENG.COM

**GENERAL
CIVIL
NORTH ACCESS ROAD
SECTIONS AND DETAILS - SHT 1**

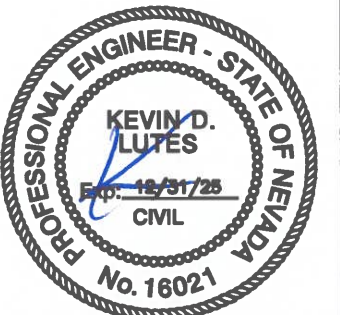
P3	11
----	----

REFERENCES		REFERENCES		REVISIONS						REVISIONS						SCALE: AS NOTED		DATE
DWG. NO.	TITLE	DWG. NO.	TITLE	NO.	DESCRIPTION	BY	APPD	DATE	CLIENT	NO.	DESCRIPTION	BY	APPD	DATE	CLIENT			
																DESIGNED BY	MWO	JUN 22
																DRAWN BY	ARM	JUN 22
																CHECKED BY	MWO	JUN 22
																PROJECT MGR -	-	
																CLIENT APPR. -	-	



- LEGEND:**
- EXISTING GROUND CONTOURS
 - PROPOSED GROUND CONTOURS
 - PROPOSED GROUND CONTOURS (BY OTHERS)
 - EXISTING ROADS/TRAILS
 - PHASE BOUNDARY

- NOTES:**
- FINAL LOCATION AND EXTENTS OF GROUNDWATER COLLECTION DRAINS TO BE DETERMINED DURING CONSTRUCTION.
 - DXF FILES WILL BE PROVIDED TO CONTRACTOR IN LIEU OF SURVEY CONTROL.



REFERENCE:
EXISTING GROUND TOPOGRAPHY CREATED IN THE UTM ZONE 11 (NAD27) COORDINATE SYSTEM FROM FILE Pinion Mine_DTM_UTM-11-USFT.dwg RECEIVED ON AUGUST 31, 2020 FROM GOLD STANDARD VENTURES.

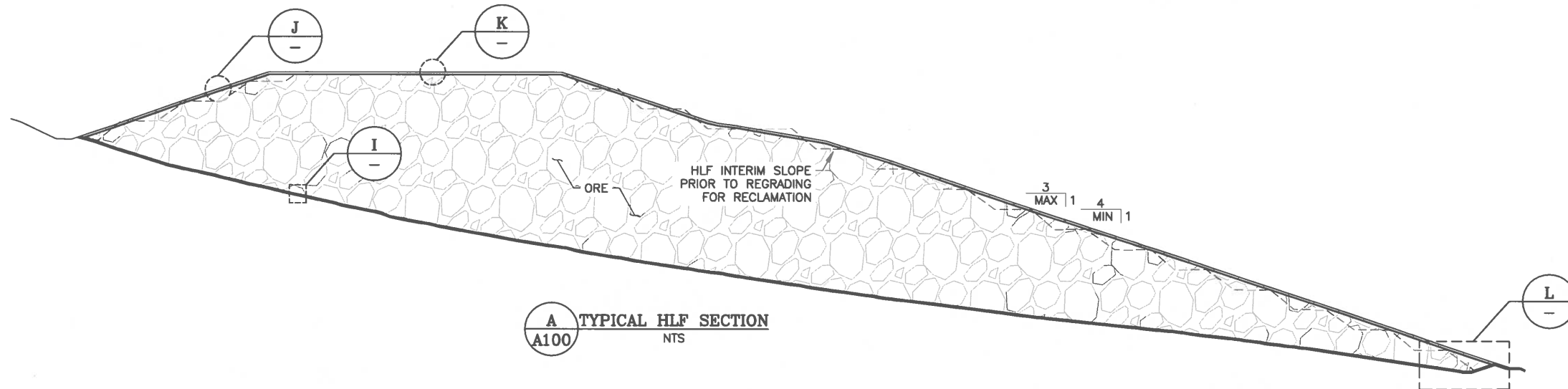
REV	DATE	DESCRIPTION	TECH	ENG
2	12/11/24	RE-ISSUED FOR CONSTRUCTION	WKD	KDL
1	08/28/23	RE-ISSUED FOR CONSTRUCTION	WKD	KDL
0	12/21/22	ISSUED FOR CONSTRUCTION	WKD	KDL

APPROVED BY: KDL
CHECKED BY: KDL
DESIGNED BY: WKD
DRAWN BY: WKD

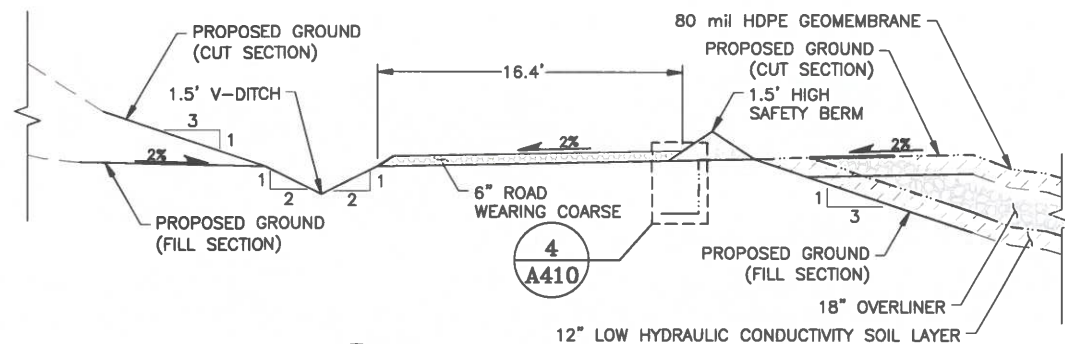
DISCLAIMER
NEWFIELDS PRODUCED THE INFORMATION PRESENTED ON THIS DRAWING THROUGH THE USE OF AVAILABLE TECHNICAL INFORMATION AND EXPERIENCE. RECEIVING THIS DRAWING DOES NOT GUARANTEE ANY RIGHTS TO EITHER SUCH TECHNICAL INFORMATION OR EXPERIENCE. ANY MODIFICATION OR ADAPTATION OF THE DATA OR DRAWING SHALL BE AT USER'S RISK AND WITHOUT ANY LIABILITY OR LEGAL RESPONSIBILITY TO NEWFIELDS.

NewFields		CLIENT	GOLD STANDARD VENTURES	
PROJECT		SOUTH RAILROAD PROJECT		
TITLE		HLF GRADING PLAN		
FILENAME		0440.001.002P		
DRAWING NO.		A100		
REVISION		2		

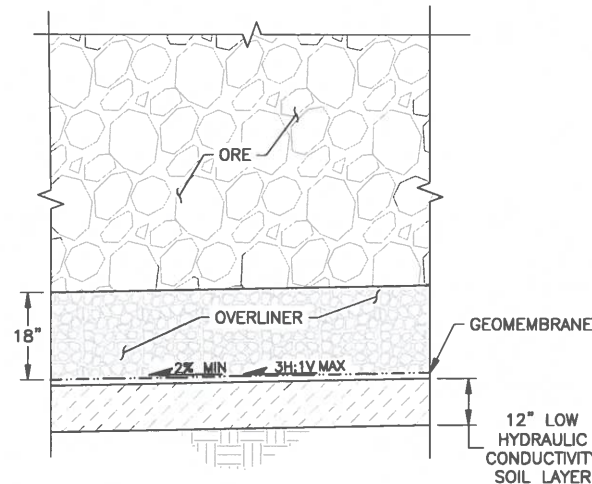
P:\Projects\0440.001-GSV South Railroad Detailed Design\A-CAD\DWGS\0440.001.005D.dwg--11/8/2024 1:54 PM



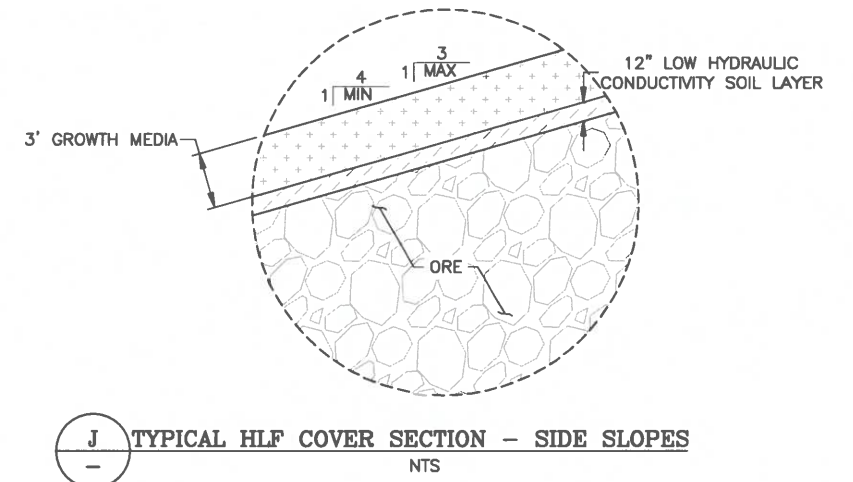
A TYPICAL HLF SECTION
A100 NTS



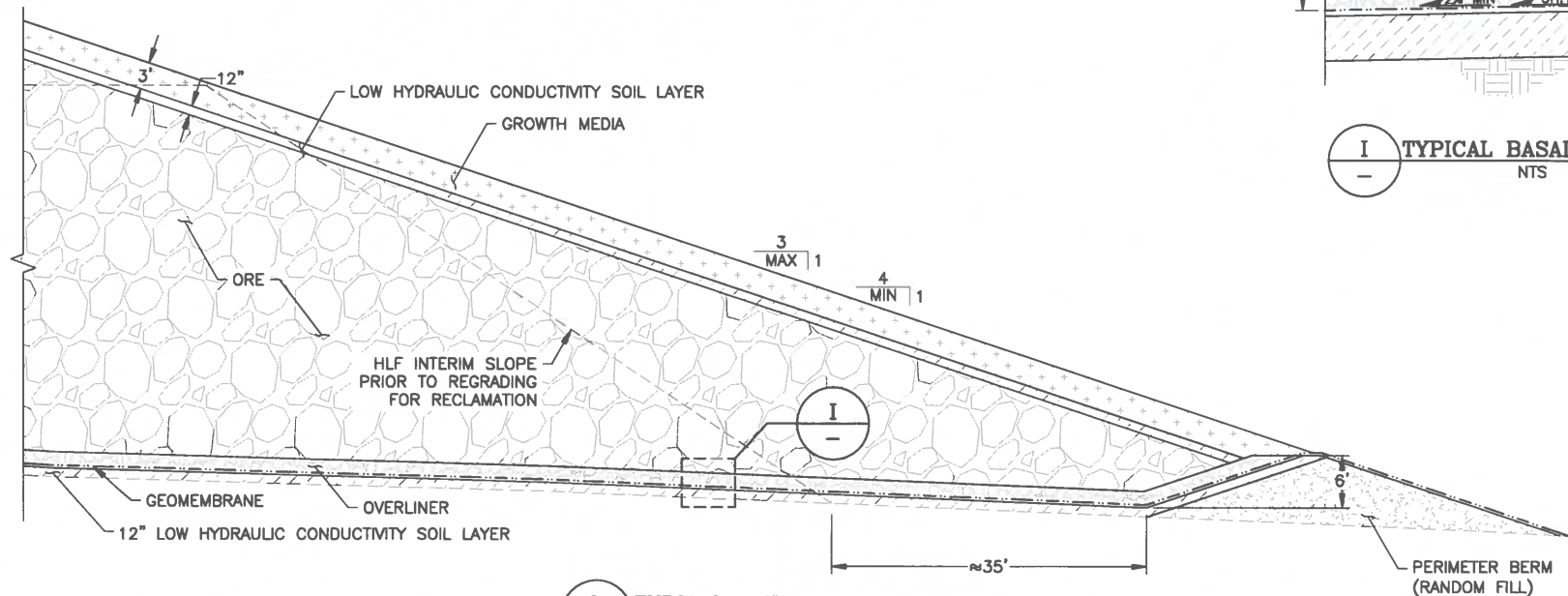
H UPPER PERIMETER ROAD PHASE 1
H110 NTS



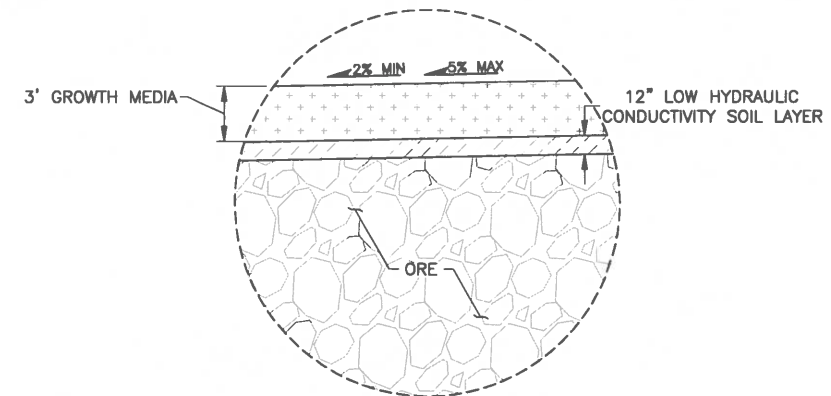
I TYPICAL BASAL SECTION
I NTS



J TYPICAL HLF COVER SECTION - SIDE SLOPES
J NTS



L TYPICAL OUTER SLOPE DETAIL
L NTS



K TYPICAL HLF COVER SECTION - TOP
K NTS

NOTES:

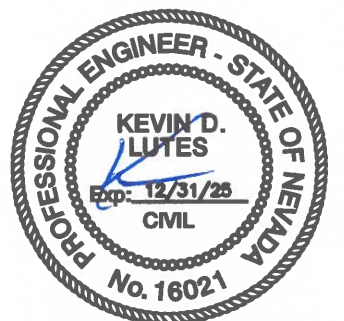
1. DRAINAGE COLLECTION PIPE NETWORK TO BE INSTALLED IN OVERLINER LAYER.

REV	DATE	DESCRIPTION	TECH	ENG
1	08/28/23	RE-ISSUED FOR CONSTRUCTION	WKD	KDL
0	12/21/22	ISSUED FOR CONSTRUCTION	WKD	KDL

APPROVED BY:	KDL
CHECKED BY:	KDL
DESIGNED BY:	WKD
DRAWN BY:	WKD

DISCLAIMER
NEWFIELDS PRODUCED THE INFORMATION PRESENTED ON THIS DRAWING THROUGH THE USE OF AVAILABLE TECHNICAL INFORMATION AND EXPERIENCE. RECEIVING THIS DRAWING DOES NOT GUARANTEE ANY RIGHTS TO EITHER SUCH TECHNICAL INFORMATION OR EXPERIENCE. ANY MODIFICATION OR ADAPTATION OF THE DATA OR DRAWING SHALL BE AT USER'S RISK AND WITHOUT ANY LIABILITY OR LEGAL RESPONSIBILITY TO NEWFIELDS.

NewFields	CLIENT	GOLD STANDARD VENTURES
PROJECT	SOUTH RAILROAD PROJECT	
TITLE	HLF SECTIONS AND DETAILS (SHEET 1 OF 2)	
FILENAME	0440.001.005D	REVISION
DRAWING NO.	A400	1



12-11-2024