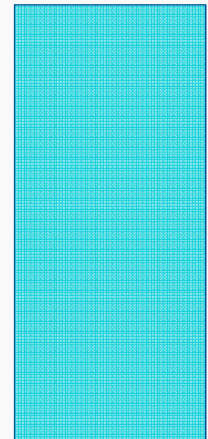


# BUREAU OF SAFE DRINKING WATER UPDATES

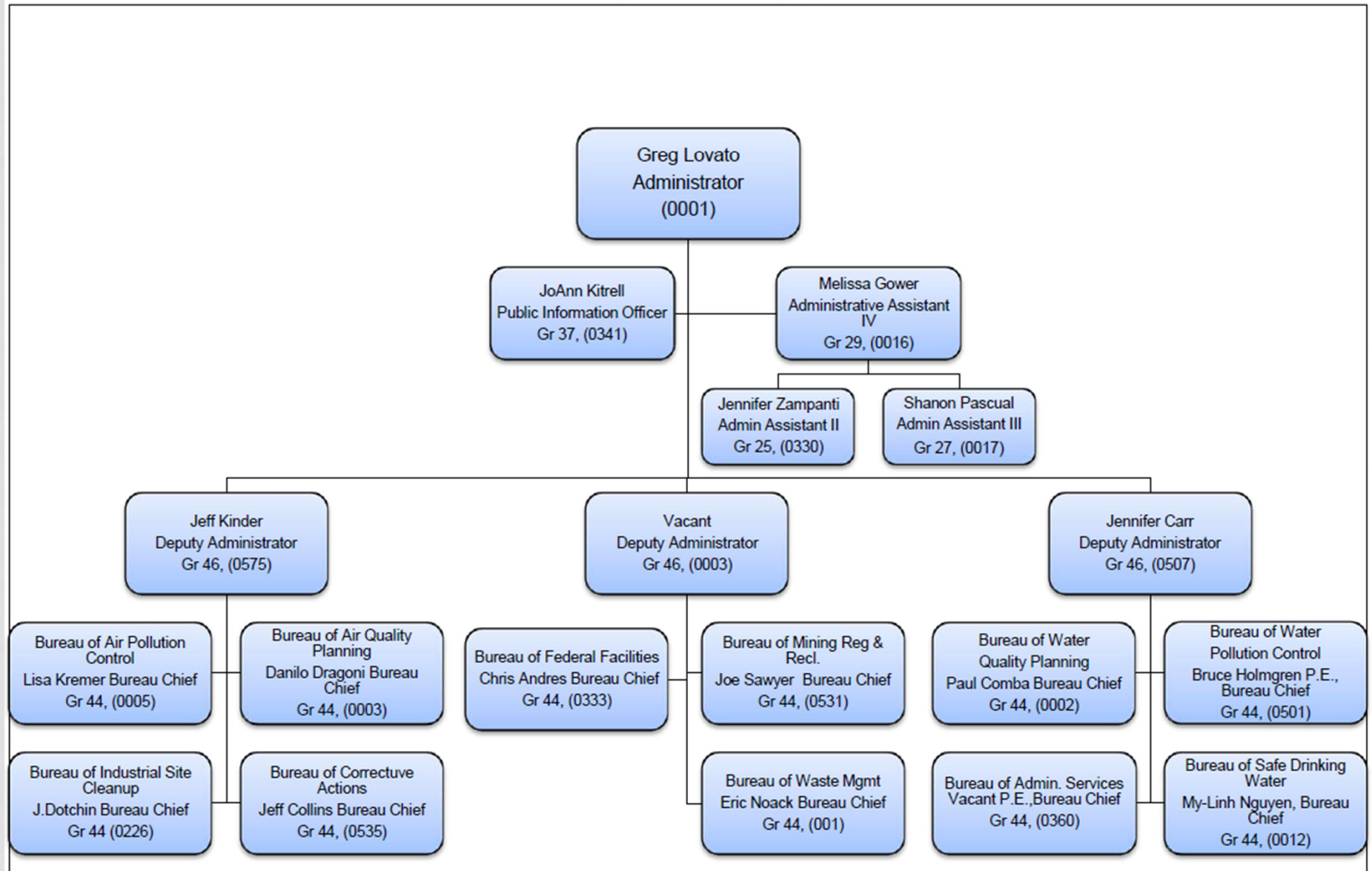
NvRWA CONFERENCE MARCH 16, 2017  
ANDREA SEIFERT



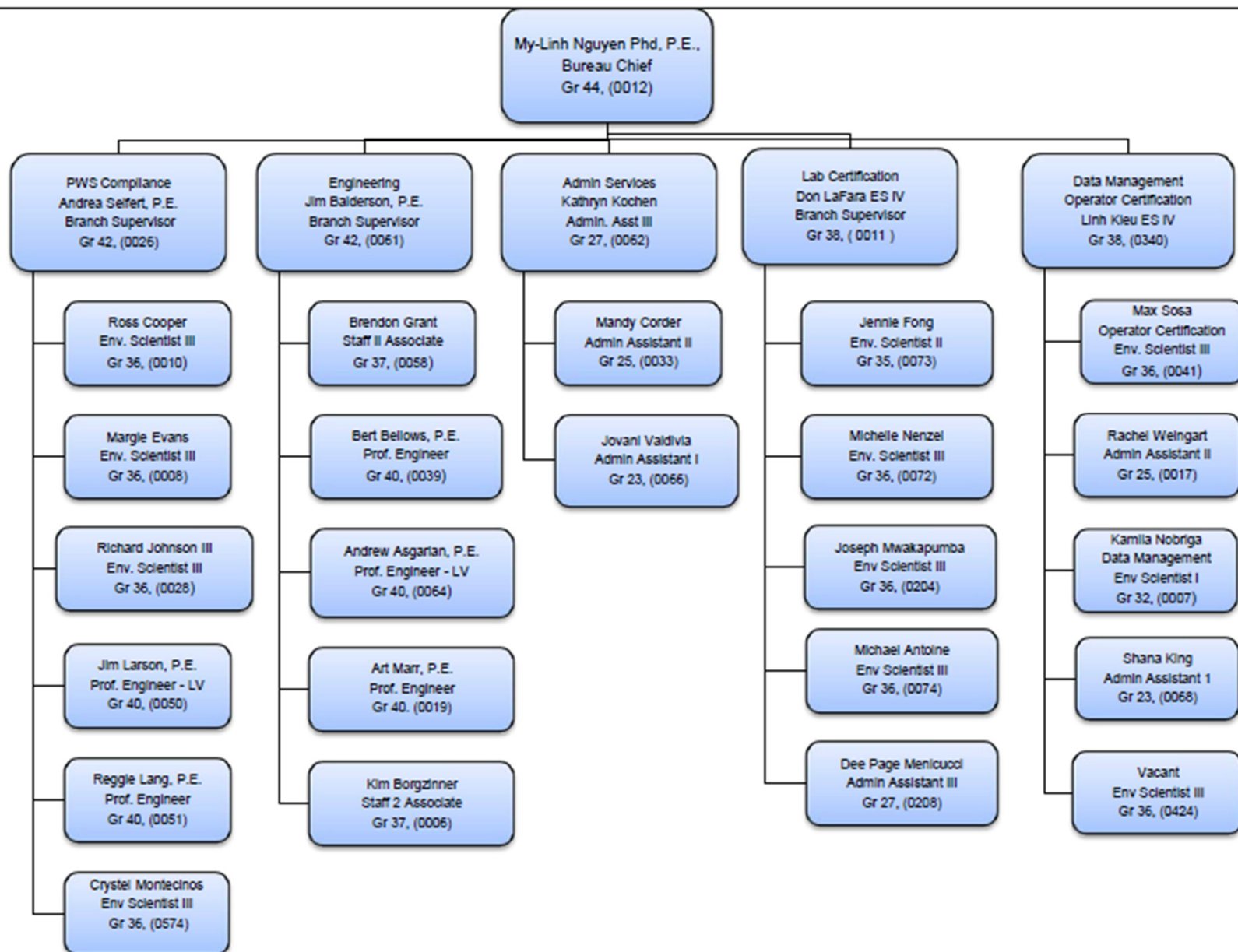
# THE BIG PICTURE

- Organizational Chart
- Enforcement
  - EPA Enforcement Response Policy & Enforcement Targeting Tool
  - Enforcement Actions Taken
- Arsenic Compliance
- Lead and Copper
  - EPA Actions and BSDW Program Review
  - Lead in Schools Sampling
  - Long Term Lead & Copper Rule Revisions
- Continuing Activities
- Emergency Response

**DIVISION OF ENVIRONMENTAL PROTECTION**  
**Division Management – February 06, 2017**

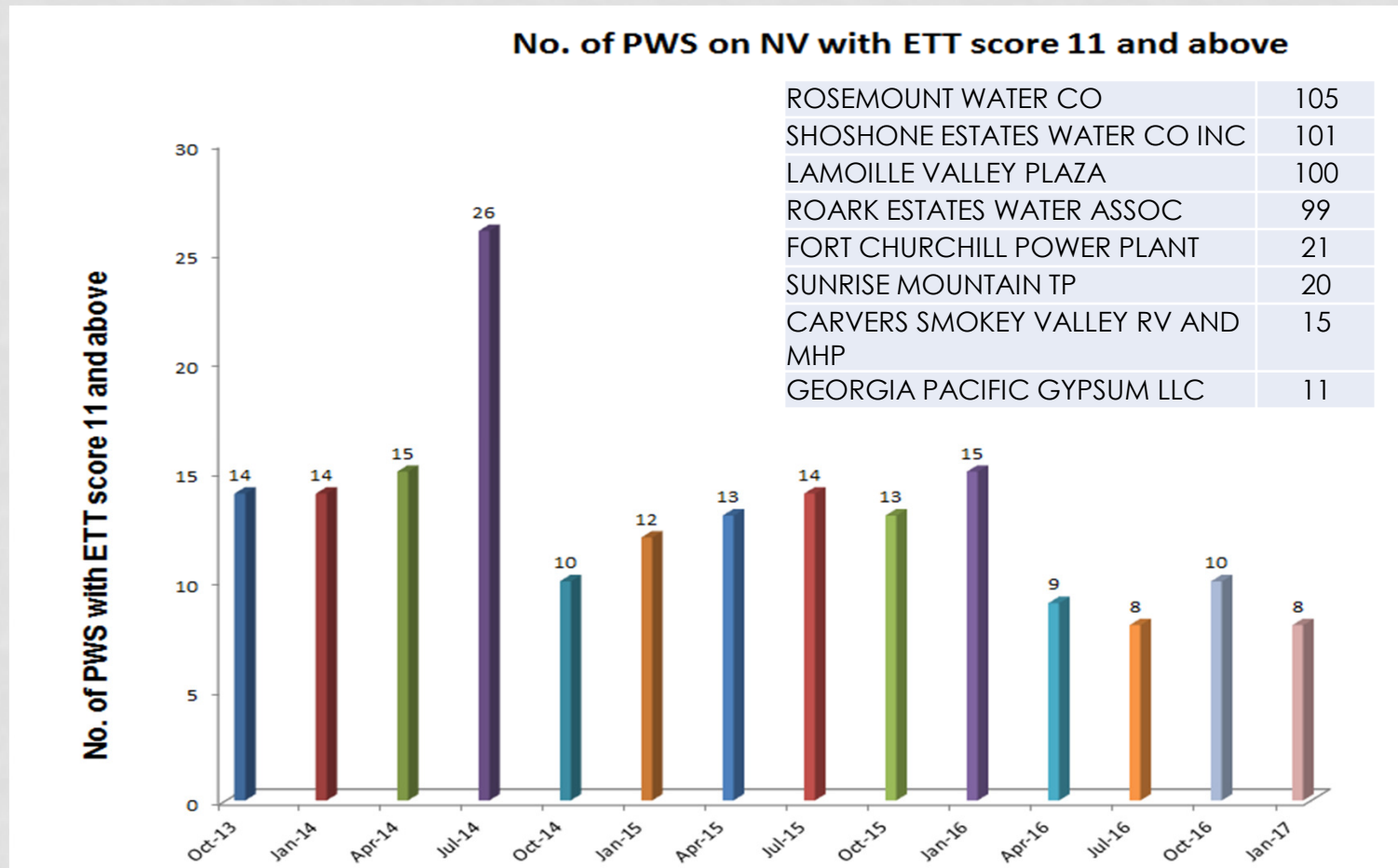


**DIVISION OF ENVIRONMENTAL PROTECTION**  
**Bureau of Safe Drinking Water – December 05, 2016**



# ENFORCEMENT

- Enforcement Targeting Tool: Currently 8 PWS



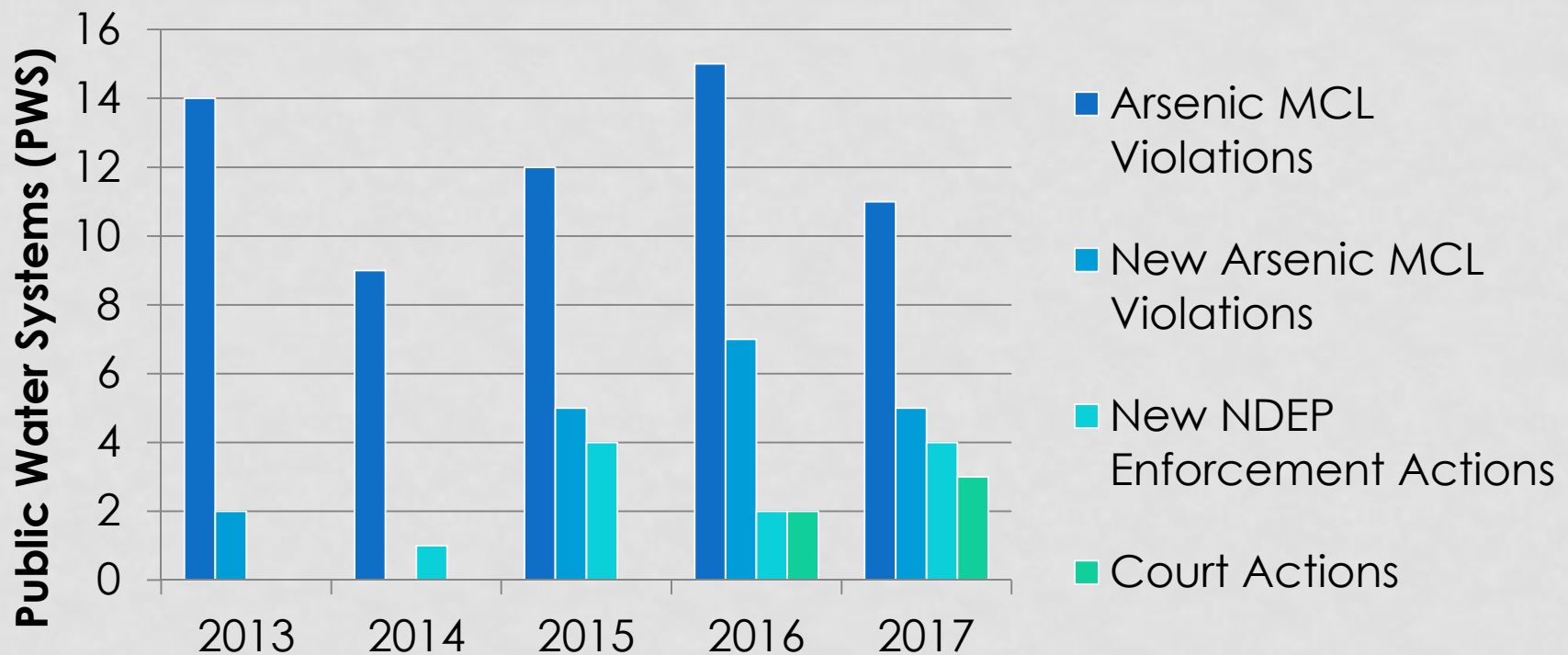
# FORMAL ENFORCEMENT ACTIONS

<b>General Offense</b>	<b>Administrative Fine</b>	<b>Non-Monetary Penalties</b>	<b>Civil Penalties</b>	<b>Date</b>
Treatment Plant Operations & Maintenance	\$20,625	Training, O&M Updates	N/A	4/29/2013
Construction without Permit- Source Not On-line	\$0	Training	N/A	6/9/2015
Construction without Permit, After Warning	\$1,375	Training	N/A	6/30/2015
Treatment Plant Operations & Maintenance	\$7,612.50	Training, O&M Updates	N/A	11/2/2015
Construction without Permit- Source On-line	\$5,025.00	N/A	N/A	5/16/2016
Arsenic Non-Compliance, Treatment O&M	\$2,550	N/A	N/A	8/1/2016
Arsenic Non-Compliance, Treatment O&M	\$3,150	N/A	N/A	12/5/2016
Construction without Permit, Repeat Offense	\$5,500	N/A	N/A	12/20/2016
Construction without Permit	\$0	Management Training	N/A	10/25/2016
Arsenic Rule Non-Compliance-Default Judgment, Churchill County Court	N/A	N/A	\$458,900	12/22/2016

# ARSENIC COMPLIANCE

- Arsenic Compliance by September 2017

## Arsenic Workload Maximum Contaminant Level (MCL)





## LEAD AND COPPER

- Know the Regulations
- Keep your documentation
- Be prepared to answer and address questions

copying and redistribution of the article or any adaptations for non-commercial purposes.

### Flint Water Crisis Caused By Interrupted Corrosion Control: Investigating “Ground Zero” Home

Kelsey J. Pieper, Min Tang, and Marc A. Edwards\*

Virginia Tech, Civil and Environmental Engineering, 418 Durham Hall, Blacksburg, Virginia 24061, United States

**S** Supporting Information

**ABSTRACT:** Flint, Michigan switched to the Flint River as a temporary drinking water source without implementing corrosion control in April 2014. Ten months later, water samples collected from a Flint residence revealed progressively rising water lead levels (104, 397, and 707  $\mu\text{g/L}$ ) coinciding with increasing water discoloration. An intensive follow-up monitoring event at this home investigated patterns of lead release by flow rate—all water samples contained lead above 15  $\mu\text{g/L}$  and several exceeded hazardous waste levels (>5000  $\mu\text{g/L}$ ). Forensic evaluation of exhumed service line pipes compared to water contamination “fingerprint” analysis





# LEAD & COPPER RULE

## NDEP Response

<http://ndep.nv.gov/bsdw/index.htm>

- Lead in Schools Grant
- Frequently Asked Questions page
- Table of Current Lead Compliance Data

**Lead Compliance Data for Nevada Public Water Systems**

The table below shows the 90th percentile Lead level for three-hundred-thirty-four (334) public water systems (PWSs) that are currently subject to the Lead and Copper Rule. The US Environmental Protection Agency (EPA) sets the 90th percentile Action Level (AL) for Lead above 0.015 mg/L. If a water system's Lead concentrations exceed the AL in more than 10% of the samples, the system must undertake additional actions to investigate the source and control corrosion in the pipes of the distribution system. The system must also inform the public about the steps they should take to protect their health (Public Education) and may have to replace lead service lines under their control.

**Acronyms:**

AL Action Level for Lead (0.015 mg/L at 90th percentile)  
 C Community public water system  
 mg/L Milligrams per liter  
 NTNC Non-Transient, Non-Community public water system  
 PWS Public Water System

SDWIS Data Query Date: 3/15/2016.

Note: Some systems submitted results that are being reviewed by staff prior to data entry. Systems with 9-year monitoring frequency are also being re-evaluated. Updates will be provided before the 2016 sampling period (June-September).

COUNTY	PWS_NAME	PWS_ID	PWS_TYPE	SAMPLE FREQUENCY	SAMPLE START DATE	SAMPLE COUNT	Lead 90th Percentile, mg/L	UPDATED MONITORING FREQUENCY
CARSON CITY	CARSON CITY PUBLIC WORKS	NV0000015	C	3-YEAR	9/20/2014	30	0.005	3-YEAR
CARSON CITY	COTTONWOOD MHP	NV0000017	C	3-YEAR	9/16/2007	5	0.000	9-YEAR
CARSON CITY	STEWART COMPLEX	NV0004084	NTNC	3-YEAR	9/8/2011	5	0.001	9-YEAR
CARSON CITY	TERRACE GARDEN APARTMENTS	NV0000028	C	3-YEAR	7/21/2015	5	0.002	3-YEAR
CHURCHILL	CARSON RIVER ESTATES	NV0003068	C	3-YEAR	9/29/2014	5	0.000	3-YEAR
CHURCHILL	FALLON CITY OF	NV0000045	C	3-YEAR	8/5/2015	20	0.003	3-YEAR
CHURCHILL	FALLON NAVAL AIR STATION	NV0000350	C	3-YEAR	9/24/2014	10	0.000	9-YEAR

# LEAD & COPPER

- BSDW Review
  - Monitoring Schedules
  - Water Quality Parameter Monitoring
  - Materials Evaluations
  - Sampling Schedules
- EPA
  - BSDW Audit- Fall of 2017
  - Long Term Revisions
    - <https://www.epa.gov/dwstandardsregulations/lead-and-copper-rule-long-term-revisions>
    - Health Based Benchmark Peer Review of modeling
    - Proposed Rule within a year

# CONTINUING ACTIVITIES

- Revised Total Coliform Rule Implementation
  - Assessments
  - Sample Plan Updates
- Sanitary Surveys
  - Significant Deficiency Follow-up
- Long Term 2 Enhanced Surface Water Treatment Rule
  - Round 2 Source Water Monitoring

# EMERGENCY RESPONSE 2017 FLOODS



- Washoe County
- Storey County
- Elko County
- Humboldt County
- Lyon County
- Churchill County
- Douglas County
- Carson County

# THE DAY AT A GLANCE

- Lab Certification Program & Updates
- Chlorine Residual Monitoring
- Revised Total Coliform Rule
- Bureau of Water Pollution Control
  - Bureau Update
  - Spill Reporting & Hotline
- Operator Certification Review
  - Drinking Water
  - Wastewater