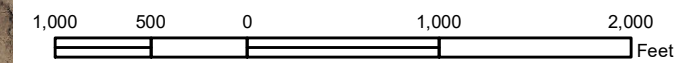
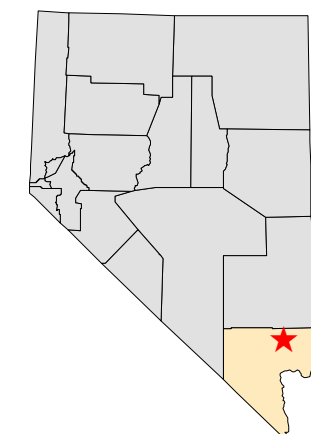


- Legend**
- RGS Property Boundary
  - Muddy River
  - Source Area Groups
  - All Areas
  - Petroleum Areas Only

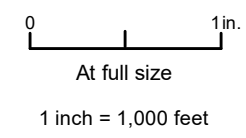


**Notes:**  
 1. Aerial LiDAR imagery provided by NV Energy; dated July 11-12, 2017.  
 Northeast area of map extent supplemented with aerial photography from 2016.



April 2018

REV	No.	REVISION DESCRIPTION	DATE	DRWN	CHKD	APVD
1		Submittal to NDEP	4/09/18	CC	BC	RLS
0		Submittal to NDEP	11/07/16	CC	AE	RLS



20618.09.42
REV. 1

REID GARDNER STATION AREA MAP  
 NV Energy  
 Reid Gardner Station  
 Moapa, NV

I:\GIS\WorkingData\CommunityRelations\RGS\AreaMap\_Website.mxd © STANLEY CONSULTANTS