

2004 Nutrient Levels in Carson Valley Groundwater based upon Discharge Monitoring Reports

A supporting document for the Carson River Report Card

July 2006



*Aerial View of Incline Village GID Wetlands Enhancement Facility
In Northern Carson Valley, From Woolpert/BAE Systems, June 2004*



Prepared by:
Randy Pahl
Nevada Division of Environmental Protection
Bureau of Water Quality Planning

2004 Nutrient Levels in Carson Valley Groundwater based upon Discharge Monitoring Reports

Table of Contents

Introduction.....	1
Background.....	1
Results.....	2
References.....	7

List of Tables

Table 1. Active NEV Permits with Groundwater Quality Monitoring in Carson Valley.....	3
Table 2. Summary of Monitoring Wells/Sites Used in Report.....	4
Table 3. Summary Statistics of Groundwater Quality by Group ID.....	6

List of Figures

Figure 1. Groundwater Permit Monitoring Sites and Groupings.....	5
--	---

Appendices

Appendix A – Summary of Discharge Monitoring Report Data for Carson Valley – Sorted by Permit Number	
Appendix B – Summary of Discharge Monitoring Report Data for Carson Valley – Sorted by Group Number	

2004 Nutrient Levels in Carson Valley Groundwater based upon Discharge Monitoring Reports

Introduction

In support of our Clean Water Act responsibilities, the Nevada Division of Environmental Protection (NDEP) – Bureau of Water Quality Planning (BWQP) is developing a Carson River Watershed Assessment or Report Card. Drawing upon numerous studies and monitoring efforts, the Report Card will provide a compilation of current knowledge about the chemical, physical and biological health of the Carson River watershed with a focus on aquatic life uses from the Nevada/California stateline to Lahontan Reservoir. It is hoped that the Report Card will be a valuable tool for educating the public, agencies and decisionmakers on the state of the river (from a Clean Water Act perspective), thereby providing direction for their future actions and decisions. The Report Card will also be a key planning tool for BWQP in possible future steps, such as standards revisions, comprehensive Total Maximum Daily Loads (TMDLs), watershed plan development and restoration projects.

The purpose of this report is to summarize nutrient data that are submitted to NDEP as part of groundwater permit conditions. It is not the intent of this report to identify sources and their contribution, but only to present a compilation of NDEP groundwater quality data to compliment other works.

BWQP and others have been interested in the nutrients in the groundwater for a number of reasons:

- Studies have found that the Carson River is often nitrogen-limited with additional nitrogen loading potentially leading to more algae growth and possible dissolved oxygen problems (Warwick et al., 1997; Latham, 2005). A better understanding of possible nitrogen loading to the Carson River from the regional groundwater is important when assessing nutrients and their impacts to the river.
- Beginning in 2003, the Desert Research Institute started developing a nutrient & dissolved oxygen model for the Carson River from Genoa Lane to Deer Run Road (in Carson City). One of the necessary model inputs include groundwater quantity and quality, however limited groundwater quality data have been published. It was hoped that data taken from NDEP files would be useful in better characterizing the groundwater quality for modeling purposes.
- Rosen (2003) examined USGS well data and found the existence of elevated (above natural background) nitrate levels in portions of the Carson Valley. BWQP was curious how groundwater quality data from NDEP files would characterize other parts of the groundwater system.
- Alvarez and Seiler (2004) found large increases in orthophosphate loads in Carson Valley during the summer and they state that the source is likely agricultural. In response to the

USGS study, BWQP is seeking to improve quantification of phosphorus in the Carson Valley groundwater.

Background

NDEP issues a variety of discharge permits, one of which is referred to as a groundwater permit. Groundwater permits are issued to any size treatment facility that discharges to the groundwater through infiltration basins, land application of effluent or leach fields (NDEP, 2004). Groundwater permits in Carson Valley typically limit nitrate levels in the receiving groundwater to 10 mg/l¹, equal to the maximum contaminant level (MCL) for drinking water. However, these permits also include additional limitations, similar to the following:

- If the nitrate levels increase to 7, the permittee shall notify NDEP and submit a plan for the increased reduction of nitrogen in the discharge to the groundwater.
- If levels increase to 9, the permittee shall begin implementation of the nitrogen reduction plan.
- If the nitrate level increases to 10, the permittee shall discontinue the discharge to the environment.

Additionally, the effluent reuse permits place restrictions on the pounds/acre of nitrogen that can be applied to the irrigated lands. In general, the total nitrogen applied (from effluent and fertilizer) is not to be greater than the total nitrogen uptake (by crops and loss from denitrification and volatilization).

None of the permits reviewed for this report contained any limitations for phosphorus levels in the groundwater. This is due, in part, to the fact that no Safe Drinking Water Act MCL has been set for phosphorus in groundwater.

As part of the permit conditions, groundwater discharge permittees are required to install and routinely sample groundwater monitoring wells. The sampling frequency, the sample type, the parameters to be monitored, the parameter limitations, the analytical methods, and the reporting frequency are determined by the Division; and can vary from permit to permit. Results of the groundwater monitoring are submitted to NDEP as part of Discharge Monitoring Reports (DMRs). Selected groundwater quality data (nitrate, total nitrogen, phosphorus [when available]²) from the DMRs were used to develop this report.

¹ The nitrate water quality standard (beneficial use standard) for the Carson River is also 10 mg/l (Nevada Administrative Code [NAC] 445A.146 through 445A.158) and appears to have been set to protect the drinking water beneficial use. However, this level is much too large for the control of eutrophication and protection of aquatic life. Additionally, the NAC contains total nitrogen (TN) RMHQs (Requirements to Maintain Existing Higher Quality) for the various control points along the Carson River system. These TN RMHQs range from 0.4 to 1.3 mg/l for annual averages and from 0.5 to 1.7 mg/l for single values. The Bureau of Water Quality Planning is considering the development of nitrate RMHQs in order to focus on the bioavailable components of TN that lead to eutrophication. Additionally, the Bureau of Water Quality Planning is investigating alternative nutrient criteria (beneficial use criteria) which recognizes the role of both phosphorus and nitrogen in algal growth.

² Phosphorus data are available only for a few of the monitoring locations.

Results

Table 1 summarizes the active groundwater permits that were considered for this report. For each of these permits, monitoring well location information and associated water quality data were compiled from NDEP Bureau of Water Pollution Control files. The wells included in this analysis are summarized in Table 2 with locations on Figure 1.

The water quality data compiled from the DMRs for each monitoring site are summarized in Appendices A and B. These appendices represent a significant amount of data and to simplify the presentation of these data, each of the wells was placed into one of 10 groups based upon geographic locations. The minimum, median and maximum nutrient concentrations within each group are summarized in Table 3. Data from wells with known construction problems were not used in developing these statistics. As shown in Table 3 and in the appendices, not all monitoring wells have associated phosphorus data.

The data presented in this report provide additional information on the overall nutrient levels in areas of the Carson Valley groundwater system. However, it is not known the extent to which the nutrients maybe migrating to and entering the Carson River. Extensive investigations would be needed to characterize the groundwater quality/quantity entering the river.

While the data presented in this report are associated with groundwater permit activities, one should not infer that these activities are the source of the nutrients in the groundwater. Additional investigations are needed to determine contributions to the groundwater from all potential sources, such as historic and current agricultural activities (which could include irrigation with surface water, groundwater, and treated effluent; and grazing, etc.), septic tank effluent, possible geothermal inputs and other potential natural sources.

Table 1. Active NEV Permits with Groundwater Quality Monitoring in Carson Valley

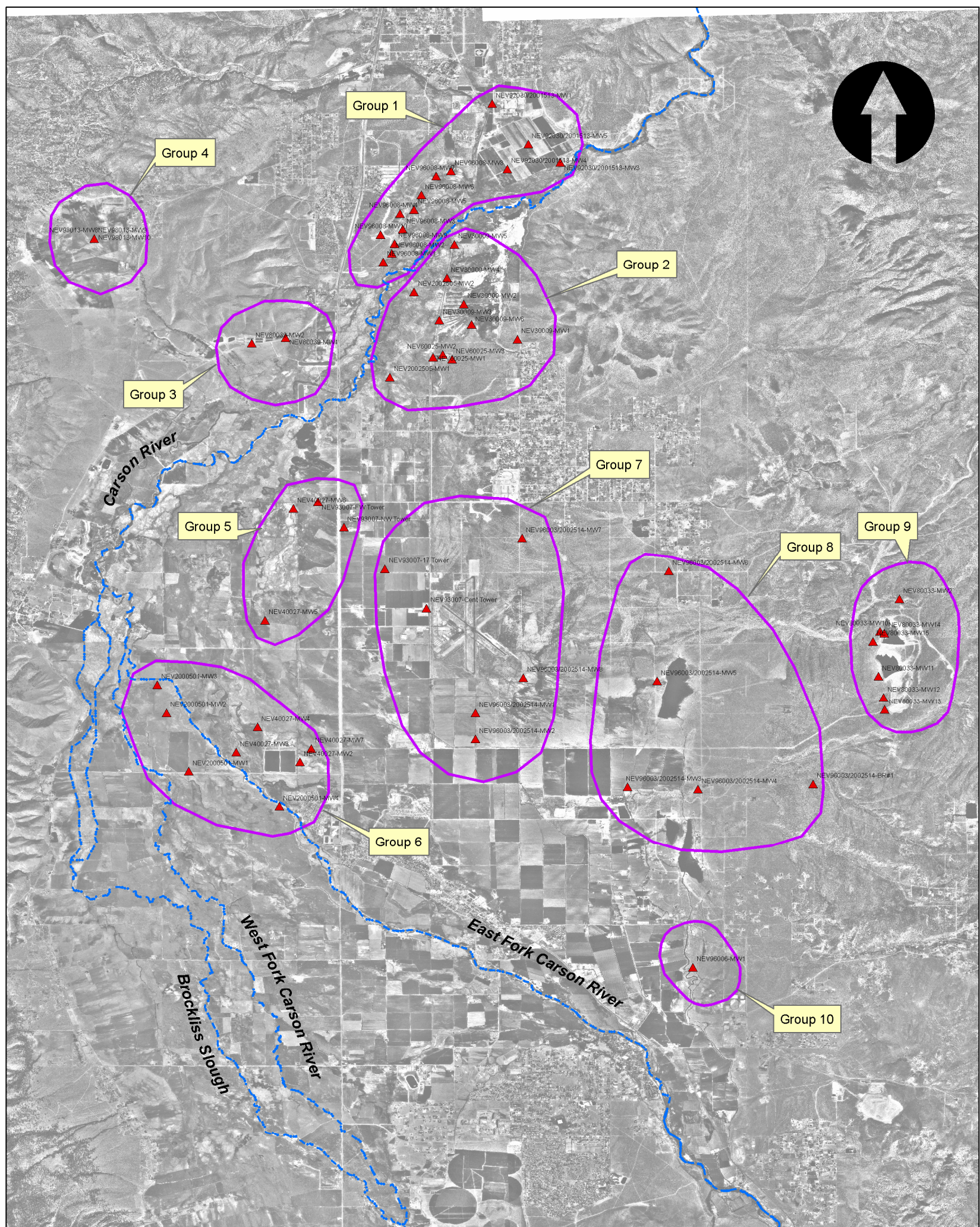
Permit Number	Permittee	Description
NEV30009	Incline Village General Improvement District (IVGID)	Treated effluent conveyed to Wetlands Enhancement Facility. A portion of effluent used for irrigation under NEV98013 (Schneider Ranch) and NEV2002505 (Bently Family Ltd. Partnership - Kirman Tract).
NEV40027	Minden Gardnerville Sanitation District (MGSD)	Treated effluent conveyed to storage facility on Muller Lane, used for irrigation on MGSD irrigation fields and at other locations (NEV2002513 – Galeppi Land and Cattle Company; NEV2002514 – Bently Family Ltd. Partnership)
NEV60025	Douglas County - North Valley Wastewater Treatment Plant (NVWWTP)	Treated effluent discharged to NVWWTP reuse irrigation field and to IVGID Wetlands (NEV30009)
NEV80033	Douglas County Sewer Improvement District (DCSID) No. 1	Effluent stored in Buckeye Reservoir and used for irrigation under NEV2000501 (Park Cattle), NEV96003 (Bently Agrowdynamics)
NEV80039	Indian Hills General Improvement District (IHGID)	Treated effluent used for onsite irrigation and for landscape irrigation under NEV96008 (Sunridge Corporation)
NEV92030	Nevada Department of Corrections	Treated effluent from the Carson City Wastewater Reclamation Plant is used for irrigation
NEV93007	Bently Pressurized Bearing Company	As part of a groundwater remediation program, groundwater is pumped with a series of extraction wells and sent through 4 different air-stripping towers to remove volatile organic compounds (VOCs). Treated groundwater is discharged to Heybourne Irrigation Ditch.
NEV96003	Bently Agrowdynamics	Treated effluent from DCSID No. 1 (NEV80033) is used for irrigation – Middle Ranch
NEV96006	Williams Ridge Technology Park	Treated effluent is discharged to the groundwater through a leach field
NEV96008	Sunridge Corporation	Treated effluent from IHGID (NEV80039) is used for golf course irrigation
NEV98013	Schneider Ranch	Treated effluent from IVGID (NEV30009) used for irrigation
NEV2000501	Park Cattle Company	Treated effluent from DCSID No. 1 (NEV80033) used for irrigation
NEV2001513	Nevada Department of Corrections	Application of horse and cow manure as a nutrient source and soil amendment
NEV2002505	Bently Family Limited Partnership - Kirman Tract	Treated effluent from IVGID (NEV30009) used for irrigation – Kirman Tract
NEV2002513	Galeppi Land and Cattle Company	Treated effluent from MGSD (NEV40027) used for irrigation
NEV2002514	Bently Family Limited Partnership	Treated effluent from MGSD (NEV40027) used for irrigation – Middle Ranch

Source: BWPC Permits Database (9/21/2005) and files

Table 2. Summary of Monitoring Wells/Sites Used in Report

Permit Number	Location and/or Permittee	Monitoring Well/Site IDs
NEV30009	Incline Village General Improvement District (IVGID) Wetlands	NEV30009-MW1 through NEV30009-MW6
NEV40027	Minden Gardnerville Sanitation District (MGSD)	NEV40027-MW2 through NEV40027-MW7
NEV60025	Douglas County - North Valley Wastewater Treatment Plant (NVWWTP)	NEV60025-MW1 through NEV60025-MW3
NEV80033	Douglas County Sewer Improvement District (DCSID) No. 1 – Buckeye Reservoir	NEV80033-MW2 NEV80033-MW10 through NEV80033-MW15
NEV80039	Indian Hills General Improvement District (IHGID)	NEV80039-MW1 through NEV80039-MW2
NEV92030/ 2001513	Nevada Department of Corrections	NEV92030/2001513-MW1 NEV92030/2001513-MW3 through NEV92030/2001513-MW5
NEV93007	Bently Pressurized Bearing Company	NEV93007-17 Tower* NEV93007-Cent Tower* NEV93007-FW Tower* NEV93007-NW Tower*
NEV96003/ 2002514	Bently Middle Ranch	NEV96003/2002514-BR#1 NEV96003/2002514-MW1 through NEV96003/2002514-MW8
NEV96006	Williams Ridge Technology Park	NEV96006-MW1
NEV96008	Sunridge Golf Course	NEV96008-MW1 through NEV96008-MW10
NEV98013	Schneider Ranch	NEV98013-MW8 through NEV98013-MW10
NEV2000501	Park Cattle Company	NEV2000501-MW1 through NEV2000501-MW4
NEV2002505	Bently Family Limited Partnership - Kirman Tract	NEV2002505-MW1 through NEV2002505-MW2
NEV2002513	Galeppi Land and Cattle Company	See NEV40027

* Nutrient data represents a composite of groundwater extracted from several wells within the vicinity of each of the air stripping towers



Legend

- ▲ NEV Permits Monitoring Wells/Sites
- Monitoring Site Groupings

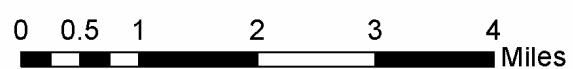


Figure 1. Groundwater Permit Monitoring Sites and Groupings

Table 3. Summary Statistics for Groundwater Quality by Group ID

Group ID	Parameter	Number of Values	Nutrient Concentration (mg/l)		
			Minimum	Median	Maximum
Group 1	Nitrate as N	15	<0.10	0.50	3.30
	Total Nitrogen as N	15	0.30	1.20	3.50
Group 2	Nitrate as N	26	<0.05	0.55	4.80
	Total Nitrogen as N	20	<0.2	1.40	4.90
	Total Phosphorus as P	9	<0.01	<0.01	0.19
Group 3 ³	Nitrate as N	8	3.20	7.40	11.00
	Total Nitrogen as N	8	3.30	5.80	11.00
Group 4	Nitrate as N	6	0.45	0.52	0.56
	Total Phosphorus as P	6	0.11	0.12	0.18
Group 5	Nitrate as N	8	<0.05	0.07	0.25
	Total Nitrogen as N	12	0.29	0.079	5.15
	Total Phosphorus as P	4	<0.05	<0.05	<0.05
Group 6	Nitrate as N	31	<0.05	<0.05	3.00
	Total Nitrogen as N	31	<0.2	0.50	3.30
Group 7	Nitrate as N	8	0.82	2.85	7.50
	Total Nitrogen as N	9	0.90	3.28	7.50
	Total Phosphorus as P	2	<0.05	<0.05	<0.05
Group 8	Nitrate as N	8	<0.05	0.57	0.69
	Total Nitrogen as N	8	<0.30	<0.60	1.10
Group 9 ⁴	Nitrate as N	25	0.70	6.60	10.00
	Total Nitrogen as N	24	<0.8	6.70	10.00
Group 10	Nitrate as N	3	<0.05	<0.05	<0.05
	Total Nitrogen as N	3	<0.30	<0.40	0.8000

³ Indian Hills GID had high nitrogen levels during 2004. Indian Hills GID is relining its 2 sludge storage ponds in 2006 and 2007 to address concerns with seepage (Maez, 2006).

⁴ Seepage from Buckeye Reservoir led to elevated nitrogen levels in area groundwater. Douglas County SID will be denitrifying its wastewater to meet a standard of 10 mg/l by 2010. In the interim, the flows going to the reservoir will be reduced by 50% starting in 2007. If increasing nitrogen trends are detecting in the monitoring wells during the interim, the facility must have denitrification in place by 2009 (Maez, 2006).

References

- Alvarez, N. and R.L. Seiler. Sources of Phosphorus to the Carson River Upstream from Lahontan Reservoir, Nevada and California, Water Years 2001-02. USGS Scientific Investigations Report 2004-5186. 2004.
- Latham, Z. Carson River Nutrient and Dissolved Oxygen Assessment, DRAFT Masters Thesis, University of Nevada Reno. 2005.
- Maez, J. Nevada Division of Environmental Protection. Personal communication. May 2006.
- Nevada Division of Environmental Protection. Continuing Planning Process. 2004.
- Rosen, M. Trends in Nitrate and Dissolved-Solids Concentrations in Ground Water, Carson Valley, Douglas County, Nevada, 1985-2001. USGS Water Resources Investigations Report 03-4152. 2003.
- Warwick, J.J., D. Cockrum, M. Horvath. Estimating Non-Point Source Loads and Associated Water Quality Impacts. *Journal of Water Resources Planning and Management*. September/October 1997.

APPENDIX A
Summary of Discharge Monitoring Report Data for
Carson Valley – Sorted by Permit Number

Table A-1. Summary of Discharge Monitoring Report Data for Carson Valley – Sorted by Permit Number

Permit Number	Name	Site ID	Master Site ID	Group ID	Date	Parameter	Value (mg/l)	Remarks	Comments
NEV30009	IVGID	MW1	NEV30009-MW1	2	06/17/04	NO3-N	0.1100	<	
NEV30009	IVGID	MW1	NEV30009-MW1	2	06/17/04	TP	0.0100	<	
NEV30009	IVGID	MW2	NEV30009-MW2	2	06/17/04	NO3-N	0.1100	<	
NEV30009	IVGID	MW2	NEV30009-MW2	2	06/17/04	TP	0.0100	<	
NEV30009	IVGID	MW3	NEV30009-MW3	2	06/17/04	NO3-N	0.1100	<	
NEV30009	IVGID	MW3	NEV30009-MW3	2	06/17/04	TP	0.0100	<	
NEV30009	IVGID	MW4	NEV30009-MW4	2	06/17/04	NO3-N	0.1100	<	
NEV30009	IVGID	MW4	NEV30009-MW4	2	06/17/04	TP	0.0100	<	
NEV30009	IVGID	MW5	NEV30009-MW5	2	06/17/04	NO3-N	0.1100	<	
NEV30009	IVGID	MW5	NEV30009-MW5	2	06/17/04	TP	0.0100	<	
NEV30009	IVGID	MW6	NEV30009-MW6	2	06/17/04	NO3-N	0.1100	<	
NEV30009	IVGID	MW6	NEV30009-MW6	2	06/17/04	TP	0.0100	<	
NEV40027	Minden-Gardnerville SD	MW2	NEV40027-MW2	6	1st Quarter 2004	NO3-N	0.4700		
NEV40027	Minden-Gardnerville SD	MW2	NEV40027-MW2	6	1st Quarter 2004	TN	0.6700		
NEV40027	Minden-Gardnerville SD	MW2	NEV40027-MW2	6	2nd Quarter 2004	NO3-N	0.7500		
NEV40027	Minden-Gardnerville SD	MW2	NEV40027-MW2	6	2nd Quarter 2004	TN	1.2500		
NEV40027	Minden-Gardnerville SD	MW2	NEV40027-MW2	6	3rd Quarter 2004	NO3-N	0.3500		
NEV40027	Minden-Gardnerville SD	MW2	NEV40027-MW2	6	3rd Quarter 2004	TN	0.6500		
NEV40027	Minden-Gardnerville SD	MW2	NEV40027-MW2	6	4th Quarter 2004	NO3-N	0.5000	<	
NEV40027	Minden-Gardnerville SD	MW2	NEV40027-MW2	6	4th Quarter 2004	TN	0.7000		
NEV40027	Minden-Gardnerville SD	MW3	NEV40027-MW3	6	1st Quarter 2004	NO3-N	0.0500	<	
NEV40027	Minden-Gardnerville SD	MW3	NEV40027-MW3	6	1st Quarter 2004	TN	0.2000		
NEV40027	Minden-Gardnerville SD	MW3	NEV40027-MW3	6	2nd Quarter 2004	NO3-N	0.0500	<	
NEV40027	Minden-Gardnerville SD	MW3	NEV40027-MW3	6	2nd Quarter 2004	TN	0.5000		
NEV40027	Minden-Gardnerville SD	MW3	NEV40027-MW3	6	3rd Quarter 2004	NO3-N	0.0500	<	
NEV40027	Minden-Gardnerville SD	MW3	NEV40027-MW3	6	3rd Quarter 2004	TN	0.3000		
NEV40027	Minden-Gardnerville SD	MW3	NEV40027-MW3	6	4th Quarter 2004	NO3-N	0.5000	<	
NEV40027	Minden-Gardnerville SD	MW3	NEV40027-MW3	6	4th Quarter 2004	TN	0.2500		
NEV40027	Minden-Gardnerville SD	MW4	NEV40027-MW4	6	1st Quarter 2004	NO3-N	0.0500	<	
NEV40027	Minden-Gardnerville SD	MW4	NEV40027-MW4	6	1st Quarter 2004	TN	0.3000	<	
NEV40027	Minden-Gardnerville SD	MW4	NEV40027-MW4	6	2nd Quarter 2004	NO3-N	0.0500	<	
NEV40027	Minden-Gardnerville SD	MW4	NEV40027-MW4	6	2nd Quarter 2004	TN	0.4000		
NEV40027	Minden-Gardnerville SD	MW4	NEV40027-MW4	6	3rd Quarter 2004	NO3-N	0.0500	<	
NEV40027	Minden-Gardnerville SD	MW4	NEV40027-MW4	6	3rd Quarter 2004	TN	0.5000		
NEV40027	Minden-Gardnerville SD	MW4	NEV40027-MW4	6	4th Quarter 2004	NO3-N	0.5000	<	
NEV40027	Minden-Gardnerville SD	MW4	NEV40027-MW4	6	4th Quarter 2004	TN	0.9000		
NEV40027	Minden-Gardnerville SD	MW5	NEV40027-MW5	5	1st Quarter 2004	NO3-N	0.2400		
NEV40027	Minden-Gardnerville SD	MW5	NEV40027-MW5	5	1st Quarter 2004	TN	0.2900		
NEV40027	Minden-Gardnerville SD	MW5	NEV40027-MW5	5	2nd Quarter 2004	NO3-N	0.1500		
NEV40027	Minden-Gardnerville SD	MW5	NEV40027-MW5	5	2nd Quarter 2004	TN	0.9500		
NEV40027	Minden-Gardnerville SD	MW5	NEV40027-MW5	5	3rd Quarter 2004	NO3-N	0.0800		
NEV40027	Minden-Gardnerville SD	MW5	NEV40027-MW5	5	3rd Quarter 2004	TN	0.7800		
NEV40027	Minden-Gardnerville SD	MW5	NEV40027-MW5	5	4th Quarter 2004	NO3-N	0.5000	<	

Table A-1. Summary of Discharge Monitoring Report Data for Carson Valley – Sorted by Permit Number

Permit Number	Name	Site ID	Master Site ID	Group ID	Date	Parameter	Value (mg/l)	Remarks	Comments
NEV40027	Minden-Gardnerville SD	MW5	NEV40027-MW5	5	4th Quarter 2004	TN	1.0000		
NEV40027	Minden-Gardnerville SD	MW6	NEV40027-MW6	5	1st Quarter 2004	NO3-N	0.0500	<	
NEV40027	Minden-Gardnerville SD	MW6	NEV40027-MW6	5	1st Quarter 2004	TN	0.4000		
NEV40027	Minden-Gardnerville SD	MW6	NEV40027-MW6	5	2nd Quarter 2004	NO3-N	0.0500		
NEV40027	Minden-Gardnerville SD	MW6	NEV40027-MW6	5	2nd Quarter 2004	TN	0.4500		
NEV40027	Minden-Gardnerville SD	MW6	NEV40027-MW6	5	3rd Quarter 2004	NO3-N	0.0500	<	
NEV40027	Minden-Gardnerville SD	MW6	NEV40027-MW6	5	3rd Quarter 2004	TN	0.7000		
NEV40027	Minden-Gardnerville SD	MW6	NEV40027-MW6	5	4th Quarter 2004	NO3-N	0.0500	<	
NEV40027	Minden-Gardnerville SD	MW6	NEV40027-MW6	5	4th Quarter 2004	TN	0.4500		
NEV40027	Minden-Gardnerville SD	MW7	NEV40027-MW7	6	1st Quarter 2004	NO3-N	3.0000		
NEV40027	Minden-Gardnerville SD	MW7	NEV40027-MW7	6	1st Quarter 2004	TN	3.3000		
NEV40027	Minden-Gardnerville SD	MW7	NEV40027-MW7	6	2nd Quarter 2004	NO3-N	2.8000		
NEV40027	Minden-Gardnerville SD	MW7	NEV40027-MW7	6	2nd Quarter 2004	TN	3.2000		
NEV40027	Minden-Gardnerville SD	MW7	NEV40027-MW7	6	3rd Quarter 2004	NO3-N	2.0000		
NEV40027	Minden-Gardnerville SD	MW7	NEV40027-MW7	6	3rd Quarter 2004	TN	2.6000		
NEV40027	Minden-Gardnerville SD	MW7	NEV40027-MW7	6	4th Quarter 2004	NO3-N	2.1000		
NEV40027	Minden-Gardnerville SD	MW7	NEV40027-MW7	6	4th Quarter 2004	TN	2.4000		
NEV60025	North Valley WWTP	MW1	NEV60025-MW1	2	1st Quarter 2004	NO3-N	4.8000		
NEV60025	North Valley WWTP	MW1	NEV60025-MW1	2	1st Quarter 2004	TKN	0.1000		
NEV60025	North Valley WWTP	MW1	NEV60025-MW1	2	1st Quarter 2004	TN	4.9000		
NEV60025	North Valley WWTP	MW1	NEV60025-MW1	2	1st Quarter 2004	TP	0.1200		
NEV60025	North Valley WWTP	MW1	NEV60025-MW1	2	2nd Quarter 2004	NO3-N	4.1000		
NEV60025	North Valley WWTP	MW1	NEV60025-MW1	2	2nd Quarter 2004	TN	4.3000		
NEV60025	North Valley WWTP	MW1	NEV60025-MW1	2	3rd Quarter 2004	NO3-N	4.1000		
NEV60025	North Valley WWTP	MW1	NEV60025-MW1	2	3rd Quarter 2004	TN	4.3000		
NEV60025	North Valley WWTP	MW1	NEV60025-MW1	2	4th Quarter 2004	NO3-N	1.3000		
NEV60025	North Valley WWTP	MW1	NEV60025-MW1	2	4th Quarter 2004	TN	2.8000		
NEV60025	North Valley WWTP	MW2	NEV60025-MW2	2	1st Quarter 2004	NO3-N	0.3300		
NEV60025	North Valley WWTP	MW2	NEV60025-MW2	2	1st Quarter 2004	TKN	0.2000		
NEV60025	North Valley WWTP	MW2	NEV60025-MW2	2	1st Quarter 2004	TN	0.5000		
NEV60025	North Valley WWTP	MW2	NEV60025-MW2	2	1st Quarter 2004	TP	0.1900		
NEV60025	North Valley WWTP	MW2	NEV60025-MW2	2	2nd Quarter 2004	NO3-N	1.6000		
NEV60025	North Valley WWTP	MW2	NEV60025-MW2	2	2nd Quarter 2004	TN	1.8000		
NEV60025	North Valley WWTP	MW2	NEV60025-MW2	2	3rd Quarter 2004	NO3-N	1.9000		
NEV60025	North Valley WWTP	MW2	NEV60025-MW2	2	3rd Quarter 2004	TN	2.2000		
NEV60025	North Valley WWTP	MW2	NEV60025-MW2	2	4th Quarter 2004	NO3-N	1.5000		
NEV60025	North Valley WWTP	MW2	NEV60025-MW2	2	4th Quarter 2004	TN	1.9000		
NEV60025	North Valley WWTP	MW3	NEV60025-MW3	2	1st Quarter 2004	NO3-N	0.0600		
NEV60025	North Valley WWTP	MW3	NEV60025-MW3	2	1st Quarter 2004	TKN	0.4000		
NEV60025	North Valley WWTP	MW3	NEV60025-MW3	2	1st Quarter 2004	TN	0.5000		
NEV60025	North Valley WWTP	MW3	NEV60025-MW3	2	1st Quarter 2004	TP	0.0400		
NEV60025	North Valley WWTP	MW3	NEV60025-MW3	2	2nd Quarter 2004	NO3-N	0.0800		
NEV60025	North Valley WWTP	MW3	NEV60025-MW3	2	2nd Quarter 2004	TN	0.2000	<	
NEV60025	North Valley WWTP	MW3	NEV60025-MW3	2	3rd Quarter 2004	NO3-N	0.0900		

Table A-1. Summary of Discharge Monitoring Report Data for Carson Valley – Sorted by Permit Number

Permit Number	Name	Site ID	Master Site ID	Group ID	Date	Parameter	Value (mg/l)	Remarks	Comments
NEV60025	North Valley WWTP	MW3	NEV60025-MW3	2	3rd Quarter 2004	TN	0.3000		
NEV60025	North Valley WWTP	MW3	NEV60025-MW3	2	4th Quarter 2004	NO3-N	0.1500		
NEV60025	North Valley WWTP	MW3	NEV60025-MW3	2	4th Quarter 2004	TN	0.3000		
NEV80033	DCSID Buckeye Res.	MW2	NEV80033-MW2	9	1st Quarter 2004	NO3-N	6.8000		
NEV80033	DCSID Buckeye Res.	MW2	NEV80033-MW2	9	1st Quarter 2004	TKN	0.1000	<	
NEV80033	DCSID Buckeye Res.	MW2	NEV80033-MW2	9	1st Quarter 2004	TN	6.8000		
NEV80033	DCSID Buckeye Res.	MW2	NEV80033-MW2	9	2nd Quarter 2004	NO3-N	7.3000		
NEV80033	DCSID Buckeye Res.	MW2	NEV80033-MW2	9	2nd Quarter 2004	TKN	0.1000	<	
NEV80033	DCSID Buckeye Res.	MW2	NEV80033-MW2	9	2nd Quarter 2004	TN	7.3000		
NEV80033	DCSID Buckeye Res.	MW2	NEV80033-MW2	9	3rd Quarter 2004	NO3-N	7.3000		
NEV80033	DCSID Buckeye Res.	MW2	NEV80033-MW2	9	3rd Quarter 2004	TKN	0.1000	<	
NEV80033	DCSID Buckeye Res.	MW2	NEV80033-MW2	9	3rd Quarter 2004	TN	7.3000		
NEV80033	DCSID Buckeye Res.	MW2	NEV80033-MW2	9	4th Quarter 2004	NO3-N	6.6000		
NEV80033	DCSID Buckeye Res.	MW2	NEV80033-MW2	9	4th Quarter 2004	TKN	0.1000	<	
NEV80033	DCSID Buckeye Res.	MW2	NEV80033-MW2	9	4th Quarter 2004	TN	6.6000		
NEV80033	DCSID Buckeye Res.	MW10	NEV80033-MW10	9	1st Quarter 2004	NO3-N	9.4000		
NEV80033	DCSID Buckeye Res.	MW10	NEV80033-MW10	9	1st Quarter 2004	TKN	0.1000	<	
NEV80033	DCSID Buckeye Res.	MW10	NEV80033-MW10	9	1st Quarter 2004	TN	9.4000		
NEV80033	DCSID Buckeye Res.	MW10	NEV80033-MW10	9	2nd Quarter 2004	NO3-N	9.8000		
NEV80033	DCSID Buckeye Res.	MW10	NEV80033-MW10	9	2nd Quarter 2004	TKN	0.1000	<	
NEV80033	DCSID Buckeye Res.	MW10	NEV80033-MW10	9	2nd Quarter 2004	TN	9.8000		
NEV80033	DCSID Buckeye Res.	MW10	NEV80033-MW10	9	3rd Quarter 2004	NO3-N	9.3000		
NEV80033	DCSID Buckeye Res.	MW10	NEV80033-MW10	9	3rd Quarter 2004	TKN	0.1000	<	
NEV80033	DCSID Buckeye Res.	MW10	NEV80033-MW10	9	3rd Quarter 2004	TN	9.3000		
NEV80033	DCSID Buckeye Res.	MW10	NEV80033-MW10	9	4th Quarter 2004	NO3-N	8.3000		
NEV80033	DCSID Buckeye Res.	MW10	NEV80033-MW10	9	4th Quarter 2004	TKN	0.1000	<	
NEV80033	DCSID Buckeye Res.	MW10	NEV80033-MW10	9	4th Quarter 2004	TN	8.3000		
NEV80033	DCSID Buckeye Res.	MW11	NEV80033-MW11	9	4th Quarter 2004	NO3-N	2.3000		
NEV80033	DCSID Buckeye Res.	MW11	NEV80033-MW11	9	4th Quarter 2004	TN	3.1000		
NEV80033	DCSID Buckeye Res.	MW12	NEV80033-MW12	9	1st Quarter 2004	NO3-N	4.2000		
NEV80033	DCSID Buckeye Res.	MW12	NEV80033-MW12	9	1st Quarter 2004	TKN	0.1000	<	
NEV80033	DCSID Buckeye Res.	MW12	NEV80033-MW12	9	1st Quarter 2004	TN	4.2000		
NEV80033	DCSID Buckeye Res.	MW12	NEV80033-MW12	9	2nd Quarter 2004	NO3-N	4.5000		
NEV80033	DCSID Buckeye Res.	MW12	NEV80033-MW12	9	2nd Quarter 2004	TKN	0.1000	<	
NEV80033	DCSID Buckeye Res.	MW12	NEV80033-MW12	9	2nd Quarter 2004	TN	4.5000		
NEV80033	DCSID Buckeye Res.	MW12	NEV80033-MW12	9	3rd Quarter 2004	NO3-N	3.9000		
NEV80033	DCSID Buckeye Res.	MW12	NEV80033-MW12	9	3rd Quarter 2004	TKN	0.1000	<	
NEV80033	DCSID Buckeye Res.	MW12	NEV80033-MW12	9	3rd Quarter 2004	TN	3.9000		
NEV80033	DCSID Buckeye Res.	MW12	NEV80033-MW12	9	4th Quarter 2004	NO3-N	4.0000		
NEV80033	DCSID Buckeye Res.	MW12	NEV80033-MW12	9	4th Quarter 2004	TKN	0.1000	<	
NEV80033	DCSID Buckeye Res.	MW12	NEV80033-MW12	9	4th Quarter 2004	TN	4.0000		
NEV80033	DCSID Buckeye Res.	MW13	NEV80033-MW13	9	1st Quarter 2004	NO3-N	2.1000		
NEV80033	DCSID Buckeye Res.	MW13	NEV80033-MW13	9	1st Quarter 2004	TKN	0.1000	<	
NEV80033	DCSID Buckeye Res.	MW13	NEV80033-MW13	9	1st Quarter 2004	TN	2.1000		

Table A-1. Summary of Discharge Monitoring Report Data for Carson Valley – Sorted by Permit Number

Permit Number	Name	Site ID	Master Site ID	Group ID	Date	Parameter	Value (mg/l)	Remarks	Comments
NEV80033	DCSID Buckeye Res.	MW13	NEV80033-MW13	9	2nd Quarter 2004	NO3-N	0.7000		
NEV80033	DCSID Buckeye Res.	MW13	NEV80033-MW13	9	2nd Quarter 2004	TKN	0.1000	<	
NEV80033	DCSID Buckeye Res.	MW13	NEV80033-MW13	9	2nd Quarter 2004	TN	0.8000	<	
NEV80033	DCSID Buckeye Res.	MW13	NEV80033-MW13	9	3rd Quarter 2004	NO3-N	2.1000		
NEV80033	DCSID Buckeye Res.	MW13	NEV80033-MW13	9	3rd Quarter 2004	TKN	0.1000	<	
NEV80033	DCSID Buckeye Res.	MW13	NEV80033-MW13	9	3rd Quarter 2004	TN	2.1000		
NEV80033	DCSID Buckeye Res.	MW13	NEV80033-MW13	9	4th Quarter 2004	NO3-N	2.0000		
NEV80033	DCSID Buckeye Res.	MW13	NEV80033-MW13	9	4th Quarter 2004	TKN	0.1000	<	
NEV80033	DCSID Buckeye Res.	MW13	NEV80033-MW13	9	4th Quarter 2004	TN	no data		
NEV80033	DCSID Buckeye Res.	MW14	NEV80033-MW14	9	1st Quarter 2004	NO3-N	8.0000		
NEV80033	DCSID Buckeye Res.	MW14	NEV80033-MW14	9	1st Quarter 2004	TKN	0.1000	<	
NEV80033	DCSID Buckeye Res.	MW14	NEV80033-MW14	9	1st Quarter 2004	TN	8.0000		
NEV80033	DCSID Buckeye Res.	MW14	NEV80033-MW14	9	2nd Quarter 2004	NO3-N	2.9000		
NEV80033	DCSID Buckeye Res.	MW14	NEV80033-MW14	9	2nd Quarter 2004	TKN	0.1000	<	
NEV80033	DCSID Buckeye Res.	MW14	NEV80033-MW14	9	2nd Quarter 2004	TN	2.9000		
NEV80033	DCSID Buckeye Res.	MW14	NEV80033-MW14	9	3rd Quarter 2004	NO3-N	8.0000		
NEV80033	DCSID Buckeye Res.	MW14	NEV80033-MW14	9	3rd Quarter 2004	TKN	0.1000	<	
NEV80033	DCSID Buckeye Res.	MW14	NEV80033-MW14	9	3rd Quarter 2004	TN	8.0000		
NEV80033	DCSID Buckeye Res.	MW14	NEV80033-MW14	9	4th Quarter 2004	NO3-N	7.1000		
NEV80033	DCSID Buckeye Res.	MW14	NEV80033-MW14	9	4th Quarter 2004	TKN	0.1000	<	
NEV80033	DCSID Buckeye Res.	MW14	NEV80033-MW14	9	4th Quarter 2004	TN	7.3000		
NEV80033	DCSID Buckeye Res.	MW15	NEV80033-MW15	9	1st Quarter 2004	NO3-N	9.5000		
NEV80033	DCSID Buckeye Res.	MW15	NEV80033-MW15	9	1st Quarter 2004	TKN	0.1000	<	
NEV80033	DCSID Buckeye Res.	MW15	NEV80033-MW15	9	1st Quarter 2004	TN	9.5000		
NEV80033	DCSID Buckeye Res.	MW15	NEV80033-MW15	9	2nd Quarter 2004	NO3-N	3.1000		
NEV80033	DCSID Buckeye Res.	MW15	NEV80033-MW15	9	2nd Quarter 2004	TKN	0.1000	<	
NEV80033	DCSID Buckeye Res.	MW15	NEV80033-MW15	9	2nd Quarter 2004	TN	3.1000		
NEV80033	DCSID Buckeye Res.	MW15	NEV80033-MW15	9	3rd Quarter 2004	NO3-N	10.0000		
NEV80033	DCSID Buckeye Res.	MW15	NEV80033-MW15	9	3rd Quarter 2004	TKN	0.1000	<	
NEV80033	DCSID Buckeye Res.	MW15	NEV80033-MW15	9	3rd Quarter 2004	TN	10.0000		
NEV80033	DCSID Buckeye Res.	MW15	NEV80033-MW15	9	4th Quarter 2004	NO3-N	6.1000		
NEV80033	DCSID Buckeye Res.	MW15	NEV80033-MW15	9	4th Quarter 2004	TKN	0.1000	<	
NEV80033	DCSID Buckeye Res.	MW15	NEV80033-MW15	9	4th Quarter 2004	TN	6.1000		
NEV80039	Indian Hills GID	MW1	NEV80039-MW1	3	1st Quarter 2004	NO3-N	3.2000		
NEV80039	Indian Hills GID	MW1	NEV80039-MW1	3	1st Quarter 2004	TN	3.3000		
NEV80039	Indian Hills GID	MW1	NEV80039-MW1	3	2nd Quarter 2004	NO3-N	NO data		
NEV80039	Indian Hills GID	MW1	NEV80039-MW1	3	2nd Quarter 2004	TN	3.3000		
NEV80039	Indian Hills GID	MW1	NEV80039-MW1	3	3rd Quarter 2004	NO3-N	3.9000		
NEV80039	Indian Hills GID	MW1	NEV80039-MW1	3	3rd Quarter 2004	TN	3.9000		
NEV80039	Indian Hills GID	MW1	NEV80039-MW1	3	4th Quarter 2004	NO3-N	4.0000		
NEV80039	Indian Hills GID	MW1	NEV80039-MW1	3	4th Quarter 2004	TN	4.1000		
NEV80039	Indian Hills GID	MW2	NEV80039-MW2	3	1st Quarter 2004	NO3-N	7.4000		
NEV80039	Indian Hills GID	MW2	NEV80039-MW2	3	1st Quarter 2004	TN	7.5000		
NEV80039	Indian Hills GID	MW2	NEV80039-MW2	3	2nd Quarter 2004	NO3-N	7.9000		

Table A-1. Summary of Discharge Monitoring Report Data for Carson Valley – Sorted by Permit Number

Permit Number	Name	Site ID	Master Site ID	Group ID	Date	Parameter	Value (mg/l)	Remarks	Comments
NEV80039	Indian Hills GID	MW2	NEV80039-MW2	3	2nd Quarter 2004	TN	9.2000		
NEV80039	Indian Hills GID	MW2	NEV80039-MW2	3	3rd Quarter 2004	NO3-N	11.0000		
NEV80039	Indian Hills GID	MW2	NEV80039-MW2	3	3rd Quarter 2004	TN	11.0000		
NEV80039	Indian Hills GID	MW2	NEV80039-MW2	3	4th Quarter 2004	NO3-N	10.0000		
NEV80039	Indian Hills GID	MW2	NEV80039-MW2	3	4th Quarter 2004	TN	10.0000		
NEV92030/2001513	State Prisons	MW1	NEV92030/2001513-MW1	1	06/30/04	NO3-N	0.2300		
NEV92030/2001513	State Prisons	MW1	NEV92030/2001513-MW1	1	06/30/04	TKN	1.0000	<	
NEV92030/2001513	State Prisons	MW1	NEV92030/2001513-MW1	1	06/30/04	TN	1.0000	<	
NEV92030/2001513	State Prisons	MW1	NEV92030/2001513-MW1	1	07/29/04	NO3-N	0.3300		
NEV92030/2001513	State Prisons	MW1	NEV92030/2001513-MW1	1	07/29/04	TKN	1.0000	<	
NEV92030/2001513	State Prisons	MW1	NEV92030/2001513-MW1	1	07/29/04	TN	1.0000	<	
NEV92030/2001513	State Prisons	MW3	NEV92030/2001513-MW3	1	06/30/04	NO3-N	0.1000	<	
NEV92030/2001513	State Prisons	MW3	NEV92030/2001513-MW3	1	06/30/04	TKN	1.0000	<	
NEV92030/2001513	State Prisons	MW3	NEV92030/2001513-MW3	1	06/30/04	TN	1.0000	<	
NEV92030/2001513	State Prisons	MW3	NEV92030/2001513-MW3	1	07/29/04	NO3-N	0.1000	<	
NEV92030/2001513	State Prisons	MW3	NEV92030/2001513-MW3	1	07/29/04	TKN	1.0000	<	
NEV92030/2001513	State Prisons	MW3	NEV92030/2001513-MW3	1	07/29/04	TN	1.0000	<	
NEV92030/2001513	State Prisons	MW4	NEV92030/2001513-MW4	1	06/30/04	NO3-N	0.1000	<	
NEV92030/2001513	State Prisons	MW4	NEV92030/2001513-MW4	1	06/30/04	TKN	1.0000	<	
NEV92030/2001513	State Prisons	MW4	NEV92030/2001513-MW4	1	06/30/04	TN	1.0000	<	
NEV92030/2001513	State Prisons	MW4	NEV92030/2001513-MW4	1	07/29/04	NO3-N	0.1000	<	
NEV92030/2001513	State Prisons	MW4	NEV92030/2001513-MW4	1	07/29/04	TKN	1.0000	<	
NEV92030/2001513	State Prisons	MW4	NEV92030/2001513-MW4	1	07/29/04	TN	1.0000	<	
NEV92030/2001513	State Prisons	MW5	NEV92030/2001513-MW5	1	07/29/04	NO3-N	13.6000		Well improperly constructed. Ignored in analysis
NEV92030/2001513	State Prisons	MW5	NEV92030/2001513-MW5	1	07/29/04	TKN	1.0000	<	Well improperly constructed. Ignored in analysis
NEV92030/2001513	State Prisons	MW5	NEV92030/2001513-MW5	1	07/29/04	TN	13.6000		Well improperly constructed. Ignored in analysis
NEV93007	Bently Press. Bearing Co.	17 Tower	NEV93007-17 Tower	7	1st Quarter 2004	TP	0.0500	<	
NEV93007	Bently Press. Bearing Co.	17 Tower	NEV93007-17 Tower	7	2nd Quarter 2004	TP	no data		
NEV93007	Bently Press. Bearing Co.	17 Tower	NEV93007-17 Tower	7	2nd Quarter 2004	TN	no data		
NEV93007	Bently Press. Bearing Co.	17 Tower	NEV93007-17 Tower	7	3rd Quarter 2004	TN	No data		
NEV93007	Bently Press. Bearing Co.	17 Tower	NEV93007-17 Tower	7	3rd Quarter 2004	TP	No data		
NEV93007	Bently Press. Bearing Co.	17 Tower	NEV93007-17 Tower	7	4th Quarter 2004	TN	3.2800		
NEV93007	Bently Press. Bearing Co.	17 Tower	NEV93007-17 Tower	7	4th Quarter 2004	TP	0.0500	<	
NEV93007	Bently Press. Bearing Co.	Cent Tower	NEV93007-Cent Tower	7	1st Quarter 2004	TN	No Data		
NEV93007	Bently Press. Bearing Co.	Cent Tower	NEV93007-Cent Tower	7	1st Quarter 2004	TP	No Data		
NEV93007	Bently Press. Bearing Co.	Cent Tower	NEV93007-Cent Tower	7	2nd Quarter 2004	TN	No Data		
NEV93007	Bently Press. Bearing Co.	Cent Tower	NEV93007-Cent Tower	7	2nd Quarter 2004	TP	No Data		
NEV93007	Bently Press. Bearing Co.	Cent Tower	NEV93007-Cent Tower	7	3rd Quarter 2004	TN	No Data		

Table A-1. Summary of Discharge Monitoring Report Data for Carson Valley – Sorted by Permit Number

Permit Number	Name	Site ID	Master Site ID	Group ID	Date	Parameter	Value (mg/l)	Remarks	Comments
NEV93007	Bently Press. Bearing Co.	Cent Tower	NEV93007-Cent Tower	7	3rd Quarter 2004	TP	No Data		
NEV93007	Bently Press. Bearing Co.	Cent Tower	NEV93007-Cent Tower	7	4th Quarter 2004	TN	No Data		
NEV93007	Bently Press. Bearing Co.	Cent Tower	NEV93007-Cent Tower	7	4th Quarter 2004	TP	No Data		
NEV93007	Bently Press. Bearing Co.	FW Tower	NEV93007-FW Tower	5	1st Quarter 2004	TN	5.1500		
NEV93007	Bently Press. Bearing Co.	FW Tower	NEV93007-FW Tower	5	1st Quarter 2004	TP	0.0500	<	
NEV93007	Bently Press. Bearing Co.	FW Tower	NEV93007-FW Tower	5	2nd Quarter 2004	TN	no data		
NEV93007	Bently Press. Bearing Co.	FW Tower	NEV93007-FW Tower	5	2nd Quarter 2004	TP	no data		
NEV93007	Bently Press. Bearing Co.	FW Tower	NEV93007-FW Tower	5	3rd Quarter 2004	TN	No data		
NEV93007	Bently Press. Bearing Co.	FW Tower	NEV93007-FW Tower	5	3rd Quarter 2004	TP	No data		
NEV93007	Bently Press. Bearing Co.	FW Tower	NEV93007-FW Tower	5	4th Quarter 2004	TN	1.7000		
NEV93007	Bently Press. Bearing Co.	FW Tower	NEV93007-FW Tower	5	4th Quarter 2004	TP	0.0500	<	
NEV93007	Bently Press. Bearing Co.	NW Tower	NEV93007-NW Tower	5	1st Quarter 2004	TN	3.9000		
NEV93007	Bently Press. Bearing Co.	NW Tower	NEV93007-NW Tower	5	1st Quarter 2004	TP	0.0500	<	
NEV93007	Bently Press. Bearing Co.	NW Tower	NEV93007-NW Tower	5	2nd Quarter 2004	TN	No data		
NEV93007	Bently Press. Bearing Co.	NW Tower	NEV93007-NW Tower	5	2nd Quarter 2004	TP	No data		
NEV93007	Bently Press. Bearing Co.	NW Tower	NEV93007-NW Tower	5	3rd Quarter 2004	TN	No data		
NEV93007	Bently Press. Bearing Co.	NW Tower	NEV93007-NW Tower	5	3rd Quarter 2004	TP	No data		
NEV93007	Bently Press. Bearing Co.	NW Tower	NEV93007-NW Tower	5	4th Quarter 2004	TN	0.8000		
NEV93007	Bently Press. Bearing Co.	NW Tower	NEV93007-NW Tower	5	4th Quarter 2004	TP	0.0500	<	
NEV96003/2002514	Bently Middle Ranch/DCSID	BR#1	NEV96003/2002514-BR#1	8	2nd Quarter 2004	NO3-N	0.4900		
NEV96003/2002514	Bently Middle Ranch/DCSID	BR#1	NEV96003/2002514-BR#1	8	2nd Quarter 2004	TN	0.6000	<	
NEV96003/2002514	Bently Middle Ranch/DCSID	MW1	NEV96003/2002514-MW1	7	2nd Quarter 2004	NO3-N	1.8000		
NEV96003/2002514	Bently Middle Ranch/DCSID	MW1	NEV96003/2002514-MW1	7	2nd Quarter 2004	TN	2.3000		
NEV96003/2002514	Bently Middle Ranch/DCSID	MW1	NEV96003/2002514-MW1	7	4th Quarter 2004	NO3-N	2.4000		
NEV96003/2002514	Bently Middle Ranch/DCSID	MW1	NEV96003/2002514-MW1	7	4th Quarter 2004	TN	2.5000		
NEV96003/2002514	Bently Middle Ranch/DCSID	MW2	NEV96003/2002514-MW2	7	2nd Quarter 2004	NO3-N	3.3000		
NEV96003/2002514	Bently Middle Ranch/DCSID	MW2	NEV96003/2002514-MW2	7	2nd Quarter 2004	TN	3.3000		
NEV96003/2002514	Bently Middle Ranch/DCSID	MW2	NEV96003/2002514-MW2	7	4th Quarter 2004	NO3-N	3.3000		
NEV96003/2002514	Bently Middle Ranch/DCSID	MW2	NEV96003/2002514-MW2	7	4th Quarter 2004	TN	3.4000		
NEV96003/2002514	Bently Middle Ranch/DCSID	MW3	NEV96003/2002514-MW3	8	4th Quarter 2004	NO3-N	dry		
NEV96003/2002514	Bently Middle Ranch/DCSID	MW3	NEV96003/2002514-MW3	8	4th Quarter 2004	TN	dry		
NEV96003/2002514	Bently Middle Ranch/DCSID	MW4	NEV96003/2002514-MW4	8	4th Quarter 2004	NO3-N	0.0500	<	
NEV96003/2002514	Bently Middle Ranch/DCSID	MW4	NEV96003/2002514-MW4	8	4th Quarter 2004	TN	0.3000	<	
NEV96003/2002514	Bently Middle Ranch/DCSID	MW5	NEV96003/2002514-MW5	8	2nd Quarter 2004	NO3-N	0.5100		
NEV96003/2002514	Bently Middle Ranch/DCSID	MW5	NEV96003/2002514-MW5	8	2nd Quarter 2004	TN	0.6000	<	
NEV96003/2002514	Bently Middle Ranch/DCSID	MW5	NEV96003/2002514-MW5	8	3rd Quarter 2004	NO3-N	0.6700		
NEV96003/2002514	Bently Middle Ranch/DCSID	MW5	NEV96003/2002514-MW5	8	3rd Quarter 2004	TN	0.8000	<	
NEV96003/2002514	Bently Middle Ranch/DCSID	MW5	NEV96003/2002514-MW5	8	4th Quarter 2004	NO3-N	0.6200		
NEV96003/2002514	Bently Middle Ranch/DCSID	MW5	NEV96003/2002514-MW5	8	4th Quarter 2004	TN	1.1000		
NEV96003/2002514	Bently Middle Ranch/DCSID	MW6	NEV96003/2002514-MW6	8	2nd Quarter 2004	NO3-N	0.6900		
NEV96003/2002514	Bently Middle Ranch/DCSID	MW6	NEV96003/2002514-MW6	8	2nd Quarter 2004	TN	1.0000		
NEV96003/2002514	Bently Middle Ranch/DCSID	MW6	NEV96003/2002514-MW6	8	3rd Quarter 2004	NO3-N	0.6500		
NEV96003/2002514	Bently Middle Ranch/DCSID	MW6	NEV96003/2002514-MW6	8	3rd Quarter 2004	TN	0.8000		
NEV96003/2002514	Bently Middle Ranch/DCSID	MW6	NEV96003/2002514-MW6	8	4th Quarter 2004	NO3-N	0.3400		

Table A-1. Summary of Discharge Monitoring Report Data for Carson Valley – Sorted by Permit Number

Permit Number	Name	Site ID	Master Site ID	Group ID	Date	Parameter	Value (mg/l)	Remarks	Comments
NEV96003/2002514	Bently Middle Ranch/DCSID	MW6	NEV96003/2002514-MW6	8	4th Quarter 2004	TN	0.4000	<	
NEV96003/2002514	Bently Middle Ranch/DCSID	MW7	NEV96003/2002514-MW7	7	2nd Quarter 2004	NO3-N	7.2000		Nitrate levels were around 7 mg/l prior to the start of effluent reuse
NEV96003/2002514	Bently Middle Ranch/DCSID	MW7	NEV96003/2002514-MW7	7	2nd Quarter 2004	TN	7.4000		
NEV96003/2002514	Bently Middle Ranch/DCSID	MW7	NEV96003/2002514-MW7	7	3rd Quarter 2004	NO3-N	7.5000		
NEV96003/2002514	Bently Middle Ranch/DCSID	MW7	NEV96003/2002514-MW7	7	3rd Quarter 2004	TN	7.5000		
NEV96003/2002514	Bently Middle Ranch/DCSID	MW8	NEV96003/2002514-MW8	7	2nd Quarter 2004	NO3-N	0.8200		
NEV96003/2002514	Bently Middle Ranch/DCSID	MW8	NEV96003/2002514-MW8	7	2nd Quarter 2004	TN	0.9000		
NEV96003/2002514	Bently Middle Ranch/DCSID	MW8	NEV96003/2002514-MW8	7	3rd Quarter 2004	NO3-N	0.8200		
NEV96003/2002514	Bently Middle Ranch/DCSID	MW8	NEV96003/2002514-MW8	7	3rd Quarter 2004	TN	1.0000		
NEV96006	Williams Ridge Techn. Park	MW1	NEV96006-MW1	10	1st Quarter 2004	NO3-N	0.0500	<	
NEV96006	Williams Ridge Techn. Park	MW1	NEV96006-MW1	10	1st Quarter 2004	TN	0.4000	<	
NEV96006	Williams Ridge Techn Park	MW1	NEV96006-MW1	10	2nd Quarter 2004	NO3-N	0.0500	<	
NEV96006	Williams Ridge Techn Park	MW1	NEV96006-MW1	10	2nd Quarter 2004	TN	0.3000	<	
NEV96006	Williams Ridge Techn Park	MW1	NEV96006-MW1	10	3rd Quarter 2004	NO3-N	0.0500	<	
NEV96006	Williams Ridge Techn Park	MW1	NEV96006-MW1	10	3rd Quarter 2004	TN	0.8000		
NEV96008	Sunridge Golf Course	MW1	NEV96008-MW1	1	05/20/04	NO2-N	0.0100	<	
NEV96008	Sunridge Golf Course	MW1	NEV96008-MW1	1	05/20/04	NO3-N	1.0000	<	
NEV96008	Sunridge Golf Course	MW1	NEV96008-MW1	1	05/20/04	TKN	0.3000		
NEV96008	Sunridge Golf Course	MW1	NEV96008-MW1	1	05/20/04	TN	0.3000		
NEV96008	Sunridge Golf Course	MW10	NEV96008-MW10	1	05/20/04	NO2-N	0.0100	<	
NEV96008	Sunridge Golf Course	MW10	NEV96008-MW10	1	05/20/04	NO3-N	1.3000		
NEV96008	Sunridge Golf Course	MW10	NEV96008-MW10	1	05/20/04	TKN	0.3000		
NEV96008	Sunridge Golf Course	MW10	NEV96008-MW10	1	05/20/04	TN	1.6000		
NEV96008	Sunridge Golf Course	MW2	NEV96008-MW2	1	05/20/04	NO2-N	0.0100	<	
NEV96008	Sunridge Golf Course	MW2	NEV96008-MW2	1	05/20/04	NO3-N	1.6000		
NEV96008	Sunridge Golf Course	MW2	NEV96008-MW2	1	05/20/04	TKN	0.0580		
NEV96008	Sunridge Golf Course	MW2	NEV96008-MW2	1	05/20/04	TN	1.7000		
NEV96008	Sunridge Golf Course	MW3	NEV96008-MW3	1	05/20/04	NO2-N	0.0180		
NEV96008	Sunridge Golf Course	MW3	NEV96008-MW3	1	05/20/04	NO3-N	1.0000	<	
NEV96008	Sunridge Golf Course	MW3	NEV96008-MW3	1	05/20/04	TKN	1.3000		
NEV96008	Sunridge Golf Course	MW3	NEV96008-MW3	1	05/20/04	TN	1.3000		
NEV96008	Sunridge Golf Course	MW4	NEV96008-MW4	1	05/20/04	NO2-N	0.0100	<	
NEV96008	Sunridge Golf Course	MW4	NEV96008-MW4	1	05/20/04	NO3-N	1.0000	<	
NEV96008	Sunridge Golf Course	MW4	NEV96008-MW4	1	05/20/04	TKN	1.2000		
NEV96008	Sunridge Golf Course	MW4	NEV96008-MW4	1	05/20/04	TN	1.2000		
NEV96008	Sunridge Golf Course	MW5	NEV96008-MW5	1	05/20/04	NO2-N	0.0100	<	
NEV96008	Sunridge Golf Course	MW5	NEV96008-MW5	1	05/20/04	NO3-N	1.2000		
NEV96008	Sunridge Golf Course	MW5	NEV96008-MW5	1	05/20/04	TKN	0.2100		
NEV96008	Sunridge Golf Course	MW5	NEV96008-MW5	1	05/20/04	TN	1.4000		
NEV96008	Sunridge Golf Course	MW6	NEV96008-MW6	1	05/20/04	NO2-N	0.0100	<	
NEV96008	Sunridge Golf Course	MW6	NEV96008-MW6	1	05/20/04	NO3-N	3.3000		
NEV96008	Sunridge Golf Course	MW6	NEV96008-MW6	1	05/20/04	TKN	0.1900		
NEV96008	Sunridge Golf Course	MW6	NEV96008-MW6	1	05/20/04	TN	3.5000		
NEV96008	Sunridge Golf Course	MW7	NEV96008-MW7	1	05/20/04	NO2-N	0.0100	<	

Table A-1. Summary of Discharge Monitoring Report Data for Carson Valley – Sorted by Permit Number

Permit Number	Name	Site ID	Master Site ID	Group ID	Date	Parameter	Value (mg/l)	Remarks	Comments
NEV96008	Sunridge Golf Course	MW7	NEV96008-MW7	1	05/20/04	NO3-N	1.8000		
NEV96008	Sunridge Golf Course	MW7	NEV96008-MW7	1	05/20/04	TKN	0.0910		
NEV96008	Sunridge Golf Course	MW7	NEV96008-MW7	1	05/20/04	TN	1.9000		
NEV96008	Sunridge Golf Course	MW8	NEV96008-MW8	1	05/20/04	NO2-N	0.0210		
NEV96008	Sunridge Golf Course	MW8	NEV96008-MW8	1	05/20/04	NO3-N	1.9000		
NEV96008	Sunridge Golf Course	MW8	NEV96008-MW8	1	05/20/04	TKN	0.5600		
NEV96008	Sunridge Golf Course	MW8	NEV96008-MW8	1	05/20/04	TN	2.5000		
NEV96008	Sunridge Golf Course	MW9	NEV96008-MW9	1	05/20/04	No Data	No Data		
NEV98013	Schneider Ranch	MW10	NEV98013-MW10	4	03/26/04	NO3-N	0.5600		
NEV98013	Schneider Ranch	MW10	NEV98013-MW10	4	03/26/04	TP	0.1100		
NEV98013	Schneider Ranch	MW10	NEV98013-MW10	4	06/17/04	NO3-N	0.4500		
NEV98013	Schneider Ranch	MW10	NEV98013-MW10	4	06/17/04	TP	0.1100		
NEV98013	Schneider Ranch	MW8	NEV98013-MW8	4	03/26/04	NO3-N	0.5600		
NEV98013	Schneider Ranch	MW8	NEV98013-MW8	4	03/26/04	TP	0.1800		
NEV98013	Schneider Ranch	MW8	NEV98013-MW8	4	06/17/04	NO3-N	0.4500		
NEV98013	Schneider Ranch	MW8	NEV98013-MW8	4	06/17/04	TP	0.1700		
NEV98013	Schneider Ranch	MW9	NEV98013-MW9	4	03/26/04	NO3-N	0.5600		
NEV98013	Schneider Ranch	MW9	NEV98013-MW9	4	03/26/04	TP	0.1200		
NEV98013	Schneider Ranch	MW9	NEV98013-MW9	4	06/17/04	NO3-N	0.4700		
NEV98013	Schneider Ranch	MW9	NEV98013-MW9	4	06/17/04	TP	0.1100		
NEV2000501	Park Cattle	MW1	NEV2000501-MW1	6	1st Quarter 2004	NO3-N	no data		
NEV2000501	Park Cattle	MW1	NEV2000501-MW1	6	1st Quarter 2004	TKN	no data		
NEV2000501	Park Cattle	MW1	NEV2000501-MW1	6	1st Quarter 2004	TN	no data		
NEV2000501	Park Cattle	MW1	NEV2000501-MW1	6	2nd Quarter 2004	NO3-N	0.0500	<	
NEV2000501	Park Cattle	MW1	NEV2000501-MW1	6	2nd Quarter 2004	TKN	0.0650		
NEV2000501	Park Cattle	MW1	NEV2000501-MW1	6	2nd Quarter 2004	TN	0.7000		
NEV2000501	Park Cattle	MW1	NEV2000501-MW1	6	3rd Quarter 2004	NO3-N	0.0500	<	
NEV2000501	Park Cattle	MW1	NEV2000501-MW1	6	3rd Quarter 2004	TKN	0.5500		
NEV2000501	Park Cattle	MW1	NEV2000501-MW1	6	3rd Quarter 2004	TN	0.6000	<	
NEV2000501	Park Cattle	MW1	NEV2000501-MW1	6	4th Quarter 2004	NO3-N	0.0500	<	
NEV2000501	Park Cattle	MW1	NEV2000501-MW1	6	4th Quarter 2004	TKN	0.4500		
NEV2000501	Park Cattle	MW1	NEV2000501-MW1	6	4th Quarter 2004	TN	0.5000	<	
NEV2000501	Park Cattle	MW2	NEV2000501-MW2	6	1st Quarter 2004	NO3-N	0.0500	<	
NEV2000501	Park Cattle	MW2	NEV2000501-MW2	6	1st Quarter 2004	TKN	0.3000	<	
NEV2000501	Park Cattle	MW2	NEV2000501-MW2	6	1st Quarter 2004	TN	0.3500	<	
NEV2000501	Park Cattle	MW2	NEV2000501-MW2	6	2nd Quarter 2004	NO3-N	0.0500	<	
NEV2000501	Park Cattle	MW2	NEV2000501-MW2	6	2nd Quarter 2004	TKN	0.2500		
NEV2000501	Park Cattle	MW2	NEV2000501-MW2	6	2nd Quarter 2004	TN	0.3000	<	
NEV2000501	Park Cattle	MW2	NEV2000501-MW2	6	3rd Quarter 2004	NO3-N	0.4600		
NEV2000501	Park Cattle	MW2	NEV2000501-MW2	6	3rd Quarter 2004	TKN	0.5400		
NEV2000501	Park Cattle	MW2	NEV2000501-MW2	6	3rd Quarter 2004	TN	1.0000		
NEV2000501	Park Cattle	MW2	NEV2000501-MW2	6	4th Quarter 2004	NO3-N	0.0500	<	
NEV2000501	Park Cattle	MW2	NEV2000501-MW2	6	4th Quarter 2004	TKN	0.3500	<	
NEV2000501	Park Cattle	MW2	NEV2000501-MW2	6	4th Quarter 2004	TN	0.4000	<	

Table A-1. Summary of Discharge Monitoring Report Data for Carson Valley – Sorted by Permit Number

Permit Number	Name	Site ID	Master Site ID	Group ID	Date	Parameter	Value (mg/l)	Remarks	Comments
NEV2000501	Park Cattle	MW3	NEV2000501-MW3	6	1st Quarter 2004	NO3-N	0.0500	<	
NEV2000501	Park Cattle	MW3	NEV2000501-MW3	6	1st Quarter 2004	TKN	0.2000	<	
NEV2000501	Park Cattle	MW3	NEV2000501-MW3	6	1st Quarter 2004	TN	0.3500	<	
NEV2000501	Park Cattle	MW3	NEV2000501-MW3	6	2nd Quarter 2004	NO3-N	0.0500	<	
NEV2000501	Park Cattle	MW3	NEV2000501-MW3	6	2nd Quarter 2004	TKN	0.4500	<	
NEV2000501	Park Cattle	MW3	NEV2000501-MW3	6	2nd Quarter 2004	TN	0.5000	<	
NEV2000501	Park Cattle	MW3	NEV2000501-MW3	6	3rd Quarter 2004	NO3-N	0.0500	<	
NEV2000501	Park Cattle	MW3	NEV2000501-MW3	6	3rd Quarter 2004	TKN	0.5500		
NEV2000501	Park Cattle	MW3	NEV2000501-MW3	6	3rd Quarter 2004	TN	0.6000		
NEV2000501	Park Cattle	MW3	NEV2000501-MW3	6	4th Quarter 2004	NO3-N	0.0500	<	
NEV2000501	Park Cattle	MW3	NEV2000501-MW3	6	4th Quarter 2004	TKN	0.5500		
NEV2000501	Park Cattle	MW3	NEV2000501-MW3	6	4th Quarter 2004	TN	0.6000		
NEV2000501	Park Cattle	MW4	NEV2000501-MW4	6	1st Quarter 2004	NO3-N	0.0900		
NEV2000501	Park Cattle	MW4	NEV2000501-MW4	6	1st Quarter 2004	TKN	0.1100	<	
NEV2000501	Park Cattle	MW4	NEV2000501-MW4	6	1st Quarter 2004	TN	0.2000	<	
NEV2000501	Park Cattle	MW4	NEV2000501-MW4	6	2nd Quarter 2004	NO3-N	1.2000		
NEV2000501	Park Cattle	MW4	NEV2000501-MW4	6	2nd Quarter 2004	TKN	0.3000		
NEV2000501	Park Cattle	MW4	NEV2000501-MW4	6	2nd Quarter 2004	TN	1.5000		
NEV2000501	Park Cattle	MW4	NEV2000501-MW4	6	3rd Quarter 2004	NO3-N	0.1600		
NEV2000501	Park Cattle	MW4	NEV2000501-MW4	6	3rd Quarter 2004	TKN	0.2400		
NEV2000501	Park Cattle	MW4	NEV2000501-MW4	6	3rd Quarter 2004	TN	0.4000		
NEV2000501	Park Cattle	MW4	NEV2000501-MW4	6	4th Quarter 2004	NO3-N	0.0500	<	
NEV2000501	Park Cattle	MW4	NEV2000501-MW4	6	4th Quarter 2004	TKN	0.2500	<	
NEV2000501	Park Cattle	MW4	NEV2000501-MW4	6	4th Quarter 2004	TN	0.3000	<	
NEV2002505	Bently Kirman Tract	MW1	NEV2002505-MW1	2	1st Quarter 2004	NO3-N	0.7600		
NEV2002505	Bently Kirman Tract	MW1	NEV2002505-MW1	2	1st Quarter 2004	TN	1.0000		
NEV2002505	Bently Kirman Tract	MW1	NEV2002505-MW1	2	2nd Quarter 2004	NO3-N	1.7000		
NEV2002505	Bently Kirman Tract	MW1	NEV2002505-MW1	2	2nd Quarter 2004	TN	2.1000		
NEV2002505	Bently Kirman Tract	MW1	NEV2002505-MW1	2	3rd Quarter 2004	NO3-N	0.8600		
NEV2002505	Bently Kirman Tract	MW1	NEV2002505-MW1	2	3rd Quarter 2004	TN	1.0000	<	
NEV2002505	Bently Kirman Tract	MW1	NEV2002505-MW1	2	4th Quarter 2004	NO3-N	0.7900		
NEV2002505	Bently Kirman Tract	MW1	NEV2002505-MW1	2	4th Quarter 2004	TN	1.0000		
NEV2002505	Bently Kirman Tract	MW2	NEV2002505-MW2	2	1st Quarter 2004	NO3-N	0.0500	<	
NEV2002505	Bently Kirman Tract	MW2	NEV2002505-MW2	2	1st Quarter 2004	TN	0.4000	<	
NEV2002505	Bently Kirman Tract	MW2	NEV2002505-MW2	2	2nd Quarter 2004	NO3-N	3.3000		
NEV2002505	Bently Kirman Tract	MW2	NEV2002505-MW2	2	2nd Quarter 2004	TN	3.4000		
NEV2002505	Bently Kirman Tract	MW2	NEV2002505-MW2	2	3rd Quarter 2004	NO3-N	0.0500	<	
NEV2002505	Bently Kirman Tract	MW2	NEV2002505-MW2	2	3rd Quarter 2004	TN	0.4000	<	
NEV2002505	Bently Kirman Tract	MW2	NEV2002505-MW2	2	4th Quarter 2004	NO3-N	2.4000		
NEV2002505	Bently Kirman Tract	MW2	NEV2002505-MW2	2	4th Quarter 2004	TN	2.5000		

APPENDIX B
Summary of Discharge Monitoring Report Data for
Carson Valley – Sorted by Group

Table B-1. Summary of Discharge Monitoring Report Data for Carson Valley – Sorted by Group Number

Permit Number	Name	Site ID	Master Site ID	Group ID	Date	Parameter	Value	Remarks	Comments
NEV92030/2001513	State Prisons	MW1	NEV92030/2001513-MW1	1	06/30/04	NO3-N	0.2300		
NEV92030/2001513	State Prisons	MW1	NEV92030/2001513-MW1	1	06/30/04	TKN	1.0000	<	
NEV92030/2001513	State Prisons	MW1	NEV92030/2001513-MW1	1	06/30/04	TN	1.0000	<	
NEV92030/2001513	State Prisons	MW1	NEV92030/2001513-MW1	1	07/29/04	NO3-N	0.3300		
NEV92030/2001513	State Prisons	MW1	NEV92030/2001513-MW1	1	07/29/04	TKN	1.0000	<	
NEV92030/2001513	State Prisons	MW1	NEV92030/2001513-MW1	1	07/29/04	TN	1.0000	<	
NEV92030/2001513	State Prisons	MW3	NEV92030/2001513-MW3	1	06/30/04	NO3-N	0.1000	<	
NEV92030/2001513	State Prisons	MW3	NEV92030/2001513-MW3	1	06/30/04	TKN	1.0000	<	
NEV92030/2001513	State Prisons	MW3	NEV92030/2001513-MW3	1	06/30/04	TN	1.0000	<	
NEV92030/2001513	State Prisons	MW3	NEV92030/2001513-MW3	1	07/29/04	NO3-N	0.1000	<	
NEV92030/2001513	State Prisons	MW3	NEV92030/2001513-MW3	1	07/29/04	TKN	1.0000	<	
NEV92030/2001513	State Prisons	MW3	NEV92030/2001513-MW3	1	07/29/04	TN	1.0000	<	
NEV92030/2001513	State Prisons	MW4	NEV92030/2001513-MW4	1	06/30/04	NO3-N	0.1000	<	
NEV92030/2001513	State Prisons	MW4	NEV92030/2001513-MW4	1	06/30/04	TKN	1.0000	<	
NEV92030/2001513	State Prisons	MW4	NEV92030/2001513-MW4	1	06/30/04	TN	1.0000	<	
NEV92030/2001513	State Prisons	MW4	NEV92030/2001513-MW4	1	07/29/04	NO3-N	0.1000	<	
NEV92030/2001513	State Prisons	MW4	NEV92030/2001513-MW4	1	07/29/04	TKN	1.0000	<	
NEV92030/2001513	State Prisons	MW4	NEV92030/2001513-MW4	1	07/29/04	TN	1.0000	<	
NEV92030/2001513	State Prisons	MW5	NEV92030/2001513-MW5	1	07/29/04	NO3-N	13.6000		Well improperly constructed. Ignored in analysis
NEV92030/2001513	State Prisons	MW5	NEV92030/2001513-MW5	1	07/29/04	TKN	1.0000	<	Well improperly constructed. Ignored in analysis
NEV92030/2001513	State Prisons	MW5	NEV92030/2001513-MW5	1	07/29/04	TN	13.6000		Well improperly constructed. Ignored in analysis
NEV96008	Sunridge Golf Course	MW1	NEV96008-MW1	1	05/20/04	NO2-N	0.0100	<	
NEV96008	Sunridge Golf Course	MW1	NEV96008-MW1	1	05/20/04	NO3-N	1.0000	<	
NEV96008	Sunridge Golf Course	MW1	NEV96008-MW1	1	05/20/04	TKN	0.3000		
NEV96008	Sunridge Golf Course	MW1	NEV96008-MW1	1	05/20/04	TN	0.3000		
NEV96008	Sunridge Golf Course	MW10	NEV96008-MW10	1	05/20/04	NO2-N	0.0100	<	
NEV96008	Sunridge Golf Course	MW10	NEV96008-MW10	1	05/20/04	NO3-N	1.3000		
NEV96008	Sunridge Golf Course	MW10	NEV96008-MW10	1	05/20/04	TKN	0.3000		
NEV96008	Sunridge Golf Course	MW10	NEV96008-MW10	1	05/20/04	TN	1.6000		
NEV96008	Sunridge Golf Course	MW2	NEV96008-MW2	1	05/20/04	NO2-N	0.0100	<	
NEV96008	Sunridge Golf Course	MW2	NEV96008-MW2	1	05/20/04	NO3-N	1.6000		
NEV96008	Sunridge Golf Course	MW2	NEV96008-MW2	1	05/20/04	TKN	0.0580		
NEV96008	Sunridge Golf Course	MW2	NEV96008-MW2	1	05/20/04	TN	1.7000		
NEV96008	Sunridge Golf Course	MW3	NEV96008-MW3	1	05/20/04	NO2-N	0.0180		
NEV96008	Sunridge Golf Course	MW3	NEV96008-MW3	1	05/20/04	NO3-N	1.0000	<	
NEV96008	Sunridge Golf Course	MW3	NEV96008-MW3	1	05/20/04	TKN	1.3000		
NEV96008	Sunridge Golf Course	MW3	NEV96008-MW3	1	05/20/04	TN	1.3000		
NEV96008	Sunridge Golf Course	MW4	NEV96008-MW4	1	05/20/04	NO2-N	0.0100	<	
NEV96008	Sunridge Golf Course	MW4	NEV96008-MW4	1	05/20/04	NO3-N	1.0000	<	
NEV96008	Sunridge Golf Course	MW4	NEV96008-MW4	1	05/20/04	TKN	1.2000		
NEV96008	Sunridge Golf Course	MW4	NEV96008-MW4	1	05/20/04	TN	1.2000		

Table B-1. Summary of Discharge Monitoring Report Data for Carson Valley – Sorted by Group Number

Permit Number	Name	Site ID	Master Site ID	Group ID	Date	Parameter	Value	Remarks	Comments
NEV96008	Sunridge Golf Course	MW5	NEV96008-MW5	1	05/20/04	NO2-N	0.0100	<	
NEV96008	Sunridge Golf Course	MW5	NEV96008-MW5	1	05/20/04	NO3-N	1.2000		
NEV96008	Sunridge Golf Course	MW5	NEV96008-MW5	1	05/20/04	TKN	0.2100		
NEV96008	Sunridge Golf Course	MW5	NEV96008-MW5	1	05/20/04	TN	1.4000		
NEV96008	Sunridge Golf Course	MW6	NEV96008-MW6	1	05/20/04	NO2-N	0.0100	<	
NEV96008	Sunridge Golf Course	MW6	NEV96008-MW6	1	05/20/04	NO3-N	3.3000		
NEV96008	Sunridge Golf Course	MW6	NEV96008-MW6	1	05/20/04	TKN	0.1900		
NEV96008	Sunridge Golf Course	MW6	NEV96008-MW6	1	05/20/04	TN	3.5000		
NEV96008	Sunridge Golf Course	MW7	NEV96008-MW7	1	05/20/04	NO2-N	0.0100	<	
NEV96008	Sunridge Golf Course	MW7	NEV96008-MW7	1	05/20/04	NO3-N	1.8000		
NEV96008	Sunridge Golf Course	MW7	NEV96008-MW7	1	05/20/04	TKN	0.0910		
NEV96008	Sunridge Golf Course	MW7	NEV96008-MW7	1	05/20/04	TN	1.9000		
NEV96008	Sunridge Golf Course	MW8	NEV96008-MW8	1	05/20/04	NO2-N	0.0210		
NEV96008	Sunridge Golf Course	MW8	NEV96008-MW8	1	05/20/04	NO3-N	1.9000		
NEV96008	Sunridge Golf Course	MW8	NEV96008-MW8	1	05/20/04	TKN	0.5600		
NEV96008	Sunridge Golf Course	MW8	NEV96008-MW8	1	05/20/04	TN	2.5000		
NEV96008	Sunridge Golf Course	MW9	NEV96008-MW9	1	05/20/04	No Data	No Data		
NEV2002505	Bently Kirman Tract	MW1	NEV2002505-MW1	2	1st Quarter 2004	NO3-N	0.7600		
NEV2002505	Bently Kirman Tract	MW1	NEV2002505-MW1	2	1st Quarter 2004	TN	1.0000		
NEV2002505	Bently Kirman Tract	MW1	NEV2002505-MW1	2	2nd Quarter 2004	NO3-N	1.7000		
NEV2002505	Bently Kirman Tract	MW1	NEV2002505-MW1	2	2nd Quarter 2004	TN	2.1000		
NEV2002505	Bently Kirman Tract	MW1	NEV2002505-MW1	2	3rd Quarter 2004	NO3-N	0.8600		
NEV2002505	Bently Kirman Tract	MW1	NEV2002505-MW1	2	3rd Quarter 2004	TN	1.0000	<	
NEV2002505	Bently Kirman Tract	MW1	NEV2002505-MW1	2	4th Quarter 2004	NO3-N	0.7900		
NEV2002505	Bently Kirman Tract	MW1	NEV2002505-MW1	2	4th Quarter 2004	TN	1.0000		
NEV2002505	Bently Kirman Tract	MW2	NEV2002505-MW2	2	1st Quarter 2004	NO3-N	0.0500	<	
NEV2002505	Bently Kirman Tract	MW2	NEV2002505-MW2	2	1st Quarter 2004	TN	0.4000	<	
NEV2002505	Bently Kirman Tract	MW2	NEV2002505-MW2	2	2nd Quarter 2004	NO3-N	3.3000		
NEV2002505	Bently Kirman Tract	MW2	NEV2002505-MW2	2	2nd Quarter 2004	TN	3.4000		
NEV2002505	Bently Kirman Tract	MW2	NEV2002505-MW2	2	3rd Quarter 2004	NO3-N	0.0500	<	
NEV2002505	Bently Kirman Tract	MW2	NEV2002505-MW2	2	3rd Quarter 2004	TN	0.4000	<	
NEV2002505	Bently Kirman Tract	MW2	NEV2002505-MW2	2	4th Quarter 2004	NO3-N	2.4000		
NEV2002505	Bently Kirman Tract	MW2	NEV2002505-MW2	2	4th Quarter 2004	TN	2.5000		
NEV30009	IVGID	MW1	NEV30009-MW1	2	06/17/04	NO3-N	0.1100	<	
NEV30009	IVGID	MW1	NEV30009-MW1	2	06/17/04	TP	0.0100	<	
NEV30009	IVGID	MW2	NEV30009-MW2	2	06/17/04	NO3-N	0.1100	<	
NEV30009	IVGID	MW2	NEV30009-MW2	2	06/17/04	TP	0.0100	<	
NEV30009	IVGID	MW3	NEV30009-MW3	2	06/17/04	NO3-N	0.1100	<	
NEV30009	IVGID	MW3	NEV30009-MW3	2	06/17/04	TP	0.0100	<	
NEV30009	IVGID	MW4	NEV30009-MW4	2	06/17/04	NO3-N	0.1100	<	
NEV30009	IVGID	MW4	NEV30009-MW4	2	06/17/04	TP	0.0100	<	
NEV30009	IVGID	MW5	NEV30009-MW5	2	06/17/04	NO3-N	0.1100	<	
NEV30009	IVGID	MW5	NEV30009-MW5	2	06/17/04	TP	0.0100	<	
NEV30009	IVGID	MW6	NEV30009-MW6	2	06/17/04	NO3-N	0.1100	<	

Table B-1. Summary of Discharge Monitoring Report Data for Carson Valley – Sorted by Group Number

Permit Number	Name	Site ID	Master Site ID	Group ID	Date	Parameter	Value	Remarks	Comments
NEV30009	IVGID	MW6	NEV30009-MW6	2	06/17/04	TP	0.0100	<	
NEV60025	North Valley WWTP	MW1	NEV60025-MW1	2	1st Quarter 2004	NO3-N	4.8000		
NEV60025	North Valley WWTP	MW1	NEV60025-MW1	2	1st Quarter 2004	TKN	0.1000		
NEV60025	North Valley WWTP	MW1	NEV60025-MW1	2	1st Quarter 2004	TN	4.9000		
NEV60025	North Valley WWTP	MW1	NEV60025-MW1	2	1st Quarter 2004	TP	0.1200		
NEV60025	North Valley WWTP	MW1	NEV60025-MW1	2	2nd Quarter 2004	NO3-N	4.1000		
NEV60025	North Valley WWTP	MW1	NEV60025-MW1	2	2nd Quarter 2004	TN	4.3000		
NEV60025	North Valley WWTP	MW1	NEV60025-MW1	2	3rd Quarter 2004	NO3-N	4.1000		
NEV60025	North Valley WWTP	MW1	NEV60025-MW1	2	3rd Quarter 2004	TN	4.3000		
NEV60025	North Valley WWTP	MW1	NEV60025-MW1	2	4th Quarter 2004	NO3-N	1.3000		
NEV60025	North Valley WWTP	MW1	NEV60025-MW1	2	4th Quarter 2004	TN	2.8000		
NEV60025	North Valley WWTP	MW2	NEV60025-MW2	2	1st Quarter 2004	NO3-N	0.3300		
NEV60025	North Valley WWTP	MW2	NEV60025-MW2	2	1st Quarter 2004	TKN	0.2000		
NEV60025	North Valley WWTP	MW2	NEV60025-MW2	2	1st Quarter 2004	TN	0.5000		
NEV60025	North Valley WWTP	MW2	NEV60025-MW2	2	1st Quarter 2004	TP	0.1900		
NEV60025	North Valley WWTP	MW2	NEV60025-MW2	2	2nd Quarter 2004	NO3-N	1.6000		
NEV60025	North Valley WWTP	MW2	NEV60025-MW2	2	2nd Quarter 2004	TN	1.8000		
NEV60025	North Valley WWTP	MW2	NEV60025-MW2	2	3rd Quarter 2004	NO3-N	1.9000		
NEV60025	North Valley WWTP	MW2	NEV60025-MW2	2	3rd Quarter 2004	TN	2.2000		
NEV60025	North Valley WWTP	MW2	NEV60025-MW2	2	4th Quarter 2004	NO3-N	1.5000		
NEV60025	North Valley WWTP	MW2	NEV60025-MW2	2	4th Quarter 2004	TN	1.9000		
NEV60025	North Valley WWTP	MW3	NEV60025-MW3	2	1st Quarter 2004	NO3-N	0.0600		
NEV60025	North Valley WWTP	MW3	NEV60025-MW3	2	1st Quarter 2004	TKN	0.4000		
NEV60025	North Valley WWTP	MW3	NEV60025-MW3	2	1st Quarter 2004	TN	0.5000		
NEV60025	North Valley WWTP	MW3	NEV60025-MW3	2	1st Quarter 2004	TP	0.0400		
NEV60025	North Valley WWTP	MW3	NEV60025-MW3	2	2nd Quarter 2004	NO3-N	0.0800		
NEV60025	North Valley WWTP	MW3	NEV60025-MW3	2	2nd Quarter 2004	TN	0.2000	<	
NEV60025	North Valley WWTP	MW3	NEV60025-MW3	2	3rd Quarter 2004	NO3-N	0.0900		
NEV60025	North Valley WWTP	MW3	NEV60025-MW3	2	3rd Quarter 2004	TN	0.3000		
NEV60025	North Valley WWTP	MW3	NEV60025-MW3	2	4th Quarter 2004	NO3-N	0.1500		
NEV60025	North Valley WWTP	MW3	NEV60025-MW3	2	4th Quarter 2004	TN	0.3000		
NEV80039	Indian Hills GID	MW1	NEV80039-MW1	3	1st Quarter 2004	NO3-N	3.2000		
NEV80039	Indian Hills GID	MW1	NEV80039-MW1	3	1st Quarter 2004	TN	3.3000		
NEV80039	Indian Hills GID	MW1	NEV80039-MW1	3	2nd Quarter 2004	NO3-N	NO data		
NEV80039	Indian Hills GID	MW1	NEV80039-MW1	3	2nd Quarter 2004	TN	3.3000		
NEV80039	Indian Hills GID	MW1	NEV80039-MW1	3	3rd Quarter 2004	NO3-N	3.9000		
NEV80039	Indian Hills GID	MW1	NEV80039-MW1	3	3rd Quarter 2004	TN	3.9000		
NEV80039	Indian Hills GID	MW1	NEV80039-MW1	3	4th Quarter 2004	NO3-N	4.0000		
NEV80039	Indian Hills GID	MW1	NEV80039-MW1	3	4th Quarter 2004	TN	4.1000		
NEV80039	Indian Hills GID	MW2	NEV80039-MW2	3	1st Quarter 2004	NO3-N	7.4000		
NEV80039	Indian Hills GID	MW2	NEV80039-MW2	3	1st Quarter 2004	TN	7.5000		
NEV80039	Indian Hills GID	MW2	NEV80039-MW2	3	2nd Quarter 2004	NO3-N	7.9000		
NEV80039	Indian Hills GID	MW2	NEV80039-MW2	3	2nd Quarter 2004	TN	9.2000		
NEV80039	Indian Hills GID	MW2	NEV80039-MW2	3	3rd Quarter 2004	NO3-N	11.0000		

Table B-1. Summary of Discharge Monitoring Report Data for Carson Valley – Sorted by Group Number

Permit Number	Name	Site ID	Master Site ID	Group ID	Date	Parameter	Value	Remarks	Comments
NEV80039	Indian Hills GID	MW2	NEV80039-MW2	3	3rd Quarter 2004	TN	11.0000		
NEV80039	Indian Hills GID	MW2	NEV80039-MW2	3	4th Quarter 2004	NO3-N	10.0000		
NEV80039	Indian Hills GID	MW2	NEV80039-MW2	3	4th Quarter 2004	TN	10.0000		
NEV98013	Schneider Ranch	MW10	NEV98013-MW10	4	03/26/04	NO3-N	0.5600		
NEV98013	Schneider Ranch	MW10	NEV98013-MW10	4	03/26/04	TP	0.1100		
NEV98013	Schneider Ranch	MW10	NEV98013-MW10	4	06/17/04	NO3-N	0.4500		
NEV98013	Schneider Ranch	MW10	NEV98013-MW10	4	06/17/04	TP	0.1100		
NEV98013	Schneider Ranch	MW8	NEV98013-MW8	4	03/26/04	NO3-N	0.5600		
NEV98013	Schneider Ranch	MW8	NEV98013-MW8	4	03/26/04	TP	0.1800		
NEV98013	Schneider Ranch	MW8	NEV98013-MW8	4	06/17/04	NO3-N	0.4500		
NEV98013	Schneider Ranch	MW8	NEV98013-MW8	4	06/17/04	TP	0.1700		
NEV98013	Schneider Ranch	MW9	NEV98013-MW9	4	03/26/04	NO3-N	0.5600		
NEV98013	Schneider Ranch	MW9	NEV98013-MW9	4	03/26/04	TP	0.1200		
NEV98013	Schneider Ranch	MW9	NEV98013-MW9	4	06/17/04	NO3-N	0.4700		
NEV98013	Schneider Ranch	MW9	NEV98013-MW9	4	06/17/04	TP	0.1100		
NEV40027	Minden-Gardnerville SD	MW5	NEV40027-MW5	5	1st Quarter 2004	NO3-N	0.2400		
NEV40027	Minden-Gardnerville SD	MW5	NEV40027-MW5	5	1st Quarter 2004	TN	0.2900		
NEV40027	Minden-Gardnerville SD	MW5	NEV40027-MW5	5	2nd Quarter 2004	NO3-N	0.1500		
NEV40027	Minden-Gardnerville SD	MW5	NEV40027-MW5	5	2nd Quarter 2004	TN	0.9500		
NEV40027	Minden-Gardnerville SD	MW5	NEV40027-MW5	5	3rd Quarter 2004	NO3-N	0.0800		
NEV40027	Minden-Gardnerville SD	MW5	NEV40027-MW5	5	3rd Quarter 2004	TN	0.7800		
NEV40027	Minden-Gardnerville SD	MW5	NEV40027-MW5	5	4th Quarter 2004	NO3-N	0.5000	<	
NEV40027	Minden-Gardnerville SD	MW5	NEV40027-MW5	5	4th Quarter 2004	TN	1.0000		
NEV40027	Minden-Gardnerville SD	MW6	NEV40027-MW6	5	1st Quarter 2004	NO3-N	0.0500	<	
NEV40027	Minden-Gardnerville SD	MW6	NEV40027-MW6	5	1st Quarter 2004	TN	0.4000		
NEV40027	Minden-Gardnerville SD	MW6	NEV40027-MW6	5	2nd Quarter 2004	NO3-N	0.0500		
NEV40027	Minden-Gardnerville SD	MW6	NEV40027-MW6	5	2nd Quarter 2004	TN	0.4500		
NEV40027	Minden-Gardnerville SD	MW6	NEV40027-MW6	5	3rd Quarter 2004	NO3-N	0.0500	<	
NEV40027	Minden-Gardnerville SD	MW6	NEV40027-MW6	5	3rd Quarter 2004	TN	0.7000		
NEV40027	Minden-Gardnerville SD	MW6	NEV40027-MW6	5	4th Quarter 2004	NO3-N	0.0500	<	
NEV40027	Minden-Gardnerville SD	MW6	NEV40027-MW6	5	4th Quarter 2004	TN	0.4500		
NEV93007	Bently Press. Bearing Co.	FW Tower	NEV93007-FW Tower	5	1st Quarter 2004	TN	5.1500		
NEV93007	Bently Press. Bearing Co.	FW Tower	NEV93007-FW Tower	5	1st Quarter 2004	TP	0.0500	<	
NEV93007	Bently Press. Bearing Co.	FW Tower	NEV93007-FW Tower	5	2nd Quarter 2004	TN	no data		
NEV93007	Bently Press. Bearing Co.	FW Tower	NEV93007-FW Tower	5	2nd Quarter 2004	TP	no data		
NEV93007	Bently Press. Bearing Co.	FW Tower	NEV93007-FW Tower	5	3rd Quarter 2004	TN	No data		
NEV93007	Bently Press. Bearing Co.	FW Tower	NEV93007-FW Tower	5	3rd Quarter 2004	TP	No data		
NEV93007	Bently Press. Bearing Co.	FW Tower	NEV93007-FW Tower	5	4th Quarter 2004	TN	1.7000		
NEV93007	Bently Press. Bearing Co.	FW Tower	NEV93007-FW Tower	5	4th Quarter 2004	TP	0.0500	<	
NEV93007	Bently Press. Bearing Co.	NW Tower	NEV93007-NW Tower	5	1st Quarter 2004	TN	3.9000		
NEV93007	Bently Press. Bearing Co.	NW Tower	NEV93007-NW Tower	5	1st Quarter 2004	TP	0.0500	<	
NEV93007	Bently Press. Bearing Co.	NW Tower	NEV93007-NW Tower	5	2nd Quarter 2004	TN	No data		
NEV93007	Bently Press. Bearing Co.	NW Tower	NEV93007-NW Tower	5	2nd Quarter 2004	TP	No data		
NEV93007	Bently Press. Bearing Co.	NW Tower	NEV93007-NW Tower	5	3rd Quarter 2004	TN	No data		

Table B-1. Summary of Discharge Monitoring Report Data for Carson Valley – Sorted by Group Number

Permit Number	Name	Site ID	Master Site ID	Group ID	Date	Parameter	Value	Remarks	Comments
NEV93007	Bently Press. Bearing Co.	NW Tower	NEV93007-NW Tower	5	3rd Quarter 2004	TP	No data		
NEV93007	Bently Press. Bearing Co.	NW Tower	NEV93007-NW Tower	5	4th Quarter 2004	TN	0.8000		
NEV93007	Bently Press. Bearing Co.	NW Tower	NEV93007-NW Tower	5	4th Quarter 2004	TP	0.0500	<	
NEV2000501	Park Cattle	MW1	NEV2000501-MW1	6	1st Quarter 2004	NO3-N	no data		
NEV2000501	Park Cattle	MW1	NEV2000501-MW1	6	1st Quarter 2004	TKN	no data		
NEV2000501	Park Cattle	MW1	NEV2000501-MW1	6	1st Quarter 2004	TN	no data		
NEV2000501	Park Cattle	MW1	NEV2000501-MW1	6	2nd Quarter 2004	NO3-N	0.0500	<	
NEV2000501	Park Cattle	MW1	NEV2000501-MW1	6	2nd Quarter 2004	TKN	0.0650		
NEV2000501	Park Cattle	MW1	NEV2000501-MW1	6	2nd Quarter 2004	TN	0.7000		
NEV2000501	Park Cattle	MW1	NEV2000501-MW1	6	3rd Quarter 2004	NO3-N	0.0500	<	
NEV2000501	Park Cattle	MW1	NEV2000501-MW1	6	3rd Quarter 2004	TKN	0.5500		
NEV2000501	Park Cattle	MW1	NEV2000501-MW1	6	3rd Quarter 2004	TN	0.6000	<	
NEV2000501	Park Cattle	MW1	NEV2000501-MW1	6	4th Quarter 2004	NO3-N	0.0500	<	
NEV2000501	Park Cattle	MW1	NEV2000501-MW1	6	4th Quarter 2004	TKN	0.4500		
NEV2000501	Park Cattle	MW1	NEV2000501-MW1	6	4th Quarter 2004	TN	0.5000	<	
NEV2000501	Park Cattle	MW2	NEV2000501-MW2	6	1st Quarter 2004	NO3-N	0.0500	<	
NEV2000501	Park Cattle	MW2	NEV2000501-MW2	6	1st Quarter 2004	TKN	0.3000	<	
NEV2000501	Park Cattle	MW2	NEV2000501-MW2	6	1st Quarter 2004	TN	0.3500	<	
NEV2000501	Park Cattle	MW2	NEV2000501-MW2	6	2nd Quarter 2004	NO3-N	0.0500	<	
NEV2000501	Park Cattle	MW2	NEV2000501-MW2	6	2nd Quarter 2004	TKN	0.2500		
NEV2000501	Park Cattle	MW2	NEV2000501-MW2	6	2nd Quarter 2004	TN	0.3000	<	
NEV2000501	Park Cattle	MW2	NEV2000501-MW2	6	3rd Quarter 2004	NO3-N	0.4600		
NEV2000501	Park Cattle	MW2	NEV2000501-MW2	6	3rd Quarter 2004	TKN	0.5400		
NEV2000501	Park Cattle	MW2	NEV2000501-MW2	6	3rd Quarter 2004	TN	1.0000		
NEV2000501	Park Cattle	MW2	NEV2000501-MW2	6	4th Quarter 2004	NO3-N	0.0500	<	
NEV2000501	Park Cattle	MW2	NEV2000501-MW2	6	4th Quarter 2004	TKN	0.3500	<	
NEV2000501	Park Cattle	MW2	NEV2000501-MW2	6	4th Quarter 2004	TN	0.4000	<	
NEV2000501	Park Cattle	MW3	NEV2000501-MW3	6	1st Quarter 2004	NO3-N	0.0500	<	
NEV2000501	Park Cattle	MW3	NEV2000501-MW3	6	1st Quarter 2004	TKN	0.2000	<	
NEV2000501	Park Cattle	MW3	NEV2000501-MW3	6	1st Quarter 2004	TN	0.3500	<	
NEV2000501	Park Cattle	MW3	NEV2000501-MW3	6	2nd Quarter 2004	NO3-N	0.0500	<	
NEV2000501	Park Cattle	MW3	NEV2000501-MW3	6	2nd Quarter 2004	TKN	0.4500	<	
NEV2000501	Park Cattle	MW3	NEV2000501-MW3	6	2nd Quarter 2004	TN	0.5000	<	
NEV2000501	Park Cattle	MW3	NEV2000501-MW3	6	3rd Quarter 2004	NO3-N	0.0500	<	
NEV2000501	Park Cattle	MW3	NEV2000501-MW3	6	3rd Quarter 2004	TKN	0.5500		
NEV2000501	Park Cattle	MW3	NEV2000501-MW3	6	3rd Quarter 2004	TN	0.6000		
NEV2000501	Park Cattle	MW3	NEV2000501-MW3	6	4th Quarter 2004	NO3-N	0.0500	<	
NEV2000501	Park Cattle	MW3	NEV2000501-MW3	6	4th Quarter 2004	TKN	0.5500		
NEV2000501	Park Cattle	MW3	NEV2000501-MW3	6	4th Quarter 2004	TN	0.6000		
NEV2000501	Park Cattle	MW4	NEV2000501-MW4	6	1st Quarter 2004	NO3-N	0.0900		
NEV2000501	Park Cattle	MW4	NEV2000501-MW4	6	1st Quarter 2004	TKN	0.1100	<	
NEV2000501	Park Cattle	MW4	NEV2000501-MW4	6	1st Quarter 2004	TN	0.2000	<	
NEV2000501	Park Cattle	MW4	NEV2000501-MW4	6	2nd Quarter 2004	NO3-N	1.2000		
NEV2000501	Park Cattle	MW4	NEV2000501-MW4	6	2nd Quarter 2004	TKN	0.3000		

Table B-1. Summary of Discharge Monitoring Report Data for Carson Valley – Sorted by Group Number

Permit Number	Name	Site ID	Master Site ID	Group ID	Date	Parameter	Value	Remarks	Comments
NEV2000501	Park Cattle	MW4	NEV2000501-MW4	6	2nd Quarter 2004	TN	1.5000		
NEV2000501	Park Cattle	MW4	NEV2000501-MW4	6	3rd Quarter 2004	NO3-N	0.1600		
NEV2000501	Park Cattle	MW4	NEV2000501-MW4	6	3rd Quarter 2004	TKN	0.2400		
NEV2000501	Park Cattle	MW4	NEV2000501-MW4	6	3rd Quarter 2004	TN	0.4000		
NEV2000501	Park Cattle	MW4	NEV2000501-MW4	6	4th Quarter 2004	NO3-N	0.0500	<	
NEV2000501	Park Cattle	MW4	NEV2000501-MW4	6	4th Quarter 2004	TKN	0.2500	<	
NEV2000501	Park Cattle	MW4	NEV2000501-MW4	6	4th Quarter 2004	TN	0.3000	<	
NEV40027	Minden-Gardnerville SD	MW2	NEV40027-MW2	6	1st Quarter 2004	NO3-N	0.4700		
NEV40027	Minden-Gardnerville SD	MW2	NEV40027-MW2	6	1st Quarter 2004	TN	0.6700		
NEV40027	Minden-Gardnerville SD	MW2	NEV40027-MW2	6	2nd Quarter 2004	NO3-N	0.7500		
NEV40027	Minden-Gardnerville SD	MW2	NEV40027-MW2	6	2nd Quarter 2004	TN	1.2500		
NEV40027	Minden-Gardnerville SD	MW2	NEV40027-MW2	6	3rd Quarter 2004	NO3-N	0.3500		
NEV40027	Minden-Gardnerville SD	MW2	NEV40027-MW2	6	3rd Quarter 2004	TN	0.6500		
NEV40027	Minden-Gardnerville SD	MW2	NEV40027-MW2	6	4th Quarter 2004	NO3-N	0.5000	<	
NEV40027	Minden-Gardnerville SD	MW2	NEV40027-MW2	6	4th Quarter 2004	TN	0.7000		
NEV40027	Minden-Gardnerville SD	MW3	NEV40027-MW3	6	1st Quarter 2004	NO3-N	0.0500	<	
NEV40027	Minden-Gardnerville SD	MW3	NEV40027-MW3	6	1st Quarter 2004	TN	0.2000		
NEV40027	Minden-Gardnerville SD	MW3	NEV40027-MW3	6	2nd Quarter 2004	NO3-N	0.0500	<	
NEV40027	Minden-Gardnerville SD	MW3	NEV40027-MW3	6	2nd Quarter 2004	TN	0.5000		
NEV40027	Minden-Gardnerville SD	MW3	NEV40027-MW3	6	3rd Quarter 2004	NO3-N	0.0500	<	
NEV40027	Minden-Gardnerville SD	MW3	NEV40027-MW3	6	3rd Quarter 2004	TN	0.3000		
NEV40027	Minden-Gardnerville SD	MW3	NEV40027-MW3	6	4th Quarter 2004	NO3-N	0.5000	<	
NEV40027	Minden-Gardnerville SD	MW3	NEV40027-MW3	6	4th Quarter 2004	TN	0.2500		
NEV40027	Minden-Gardnerville SD	MW4	NEV40027-MW4	6	1st Quarter 2004	NO3-N	0.0500	<	
NEV40027	Minden-Gardnerville SD	MW4	NEV40027-MW4	6	1st Quarter 2004	TN	0.3000	<	
NEV40027	Minden-Gardnerville SD	MW4	NEV40027-MW4	6	2nd Quarter 2004	NO3-N	0.0500	<	
NEV40027	Minden-Gardnerville SD	MW4	NEV40027-MW4	6	2nd Quarter 2004	TN	0.4000		
NEV40027	Minden-Gardnerville SD	MW4	NEV40027-MW4	6	3rd Quarter 2004	NO3-N	0.0500	<	
NEV40027	Minden-Gardnerville SD	MW4	NEV40027-MW4	6	3rd Quarter 2004	TN	0.5000		
NEV40027	Minden-Gardnerville SD	MW4	NEV40027-MW4	6	4th Quarter 2004	NO3-N	0.5000	<	
NEV40027	Minden-Gardnerville SD	MW4	NEV40027-MW4	6	4th Quarter 2004	TN	0.9000		
NEV40027	Minden-Gardnerville SD	MW7	NEV40027-MW7	6	1st Quarter 2004	NO3-N	3.0000		
NEV40027	Minden-Gardnerville SD	MW7	NEV40027-MW7	6	1st Quarter 2004	TN	3.3000		
NEV40027	Minden-Gardnerville SD	MW7	NEV40027-MW7	6	2nd Quarter 2004	NO3-N	2.8000		
NEV40027	Minden-Gardnerville SD	MW7	NEV40027-MW7	6	2nd Quarter 2004	TN	3.2000		
NEV40027	Minden-Gardnerville SD	MW7	NEV40027-MW7	6	3rd Quarter 2004	NO3-N	2.0000		
NEV40027	Minden-Gardnerville SD	MW7	NEV40027-MW7	6	3rd Quarter 2004	TN	2.6000		
NEV40027	Minden-Gardnerville SD	MW7	NEV40027-MW7	6	4th Quarter 2004	NO3-N	2.1000		
NEV40027	Minden-Gardnerville SD	MW7	NEV40027-MW7	6	4th Quarter 2004	TN	2.4000		
NEV93007	Bently Press. Bearing Co.	17 Tower	NEV93007-17 Tower	7	1st Quarter 2004	TP	0.0500	<	
NEV93007	Bently Press. Bearing Co.	17 Tower	NEV93007-17 Tower	7	2nd Quarter 2004	TP	no data		
NEV93007	Bently Press. Bearing Co.	17 Tower	NEV93007-17 Tower	7	2nd Quarter 2004	TN	no data		
NEV93007	Bently Press. Bearing Co.	17 Tower	NEV93007-17 Tower	7	3rd Quarter 2004	TN	No data		
NEV93007	Bently Press. Bearing Co.	17 Tower	NEV93007-17 Tower	7	3rd Quarter 2004	TP	No data		

Table B-1. Summary of Discharge Monitoring Report Data for Carson Valley – Sorted by Group Number

Permit Number	Name	Site ID	Master Site ID	Group ID	Date	Parameter	Value	Remarks	Comments
NEV93007	Bently Press. Bearing Co.	17 Tower	NEV93007-17 Tower	7	4th Quarter 2004	TN	3.2800		
NEV93007	Bently Press. Bearing Co.	17 Tower	NEV93007-17 Tower	7	4th Quarter 2004	TP	0.0500	<	
NEV93007	Bently Press. Bearing Co.	Cent Tower	NEV93007-Cent Tower	7	1st Quarter 2004	TN	No Data		
NEV93007	Bently Press. Bearing Co.	Cent Tower	NEV93007-Cent Tower	7	1st Quarter 2004	TP	No Data		
NEV93007	Bently Press. Bearing Co.	Cent Tower	NEV93007-Cent Tower	7	2nd Quarter 2004	TN	No Data		
NEV93007	Bently Press. Bearing Co.	Cent Tower	NEV93007-Cent Tower	7	2nd Quarter 2004	TP	No Data		
NEV93007	Bently Press. Bearing Co.	Cent Tower	NEV93007-Cent Tower	7	3rd Quarter 2004	TN	No Data		
NEV93007	Bently Press. Bearing Co.	Cent Tower	NEV93007-Cent Tower	7	3rd Quarter 2004	TP	No Data		
NEV93007	Bently Press. Bearing Co.	Cent Tower	NEV93007-Cent Tower	7	4th Quarter 2004	TN	No Data		
NEV93007	Bently Press. Bearing Co.	Cent Tower	NEV93007-Cent Tower	7	4th Quarter 2004	TP	No Data		
NEV96003/2002514	Bently Middle Ranch/DCSID	MW1	NEV96003/2002514-MW1	7	2nd Quarter 2004	NO3-N	1.8000		
NEV96003/2002514	Bently Middle Ranch/DCSID	MW1	NEV96003/2002514-MW1	7	2nd Quarter 2004	TN	2.3000		
NEV96003/2002514	Bently Middle Ranch/DCSID	MW1	NEV96003/2002514-MW1	7	4th Quarter 2004	NO3-N	2.4000		
NEV96003/2002514	Bently Middle Ranch/DCSID	MW1	NEV96003/2002514-MW1	7	4th Quarter 2004	TN	2.5000		
NEV96003/2002514	Bently Middle Ranch/DCSID	MW2	NEV96003/2002514-MW2	7	2nd Quarter 2004	NO3-N	3.3000		
NEV96003/2002514	Bently Middle Ranch/DCSID	MW2	NEV96003/2002514-MW2	7	2nd Quarter 2004	TN	3.3000		
NEV96003/2002514	Bently Middle Ranch/DCSID	MW2	NEV96003/2002514-MW2	7	4th Quarter 2004	NO3-N	3.3000		
NEV96003/2002514	Bently Middle Ranch/DCSID	MW2	NEV96003/2002514-MW2	7	4th Quarter 2004	TN	3.4000		
NEV96003/2002514	Bently Middle Ranch/DCSID	MW7	NEV96003/2002514-MW7	7	2nd Quarter 2004	NO3-N	7.2000		Nitrate levels were around 7 mg/l prior to the start of effluent reuse
NEV96003/2002514	Bently Middle Ranch/DCSID	MW7	NEV96003/2002514-MW7	7	2nd Quarter 2004	TN	7.4000		
NEV96003/2002514	Bently Middle Ranch/DCSID	MW7	NEV96003/2002514-MW7	7	3rd Quarter 2004	NO3-N	7.5000		
NEV96003/2002514	Bently Middle Ranch/DCSID	MW7	NEV96003/2002514-MW7	7	3rd Quarter 2004	TN	7.5000		
NEV96003/2002514	Bently Middle Ranch/DCSID	MW8	NEV96003/2002514-MW8	7	2nd Quarter 2004	NO3-N	0.8200		
NEV96003/2002514	Bently Middle Ranch/DCSID	MW8	NEV96003/2002514-MW8	7	2nd Quarter 2004	TN	0.9000		
NEV96003/2002514	Bently Middle Ranch/DCSID	MW8	NEV96003/2002514-MW8	7	3rd Quarter 2004	NO3-N	0.8200		
NEV96003/2002514	Bently Middle Ranch/DCSID	MW8	NEV96003/2002514-MW8	7	3rd Quarter 2004	TN	1.0000		
NEV96003/2002514	Bently Middle Ranch/DCSID	BR#1	NEV96003/2002514-BR#1	8	2nd Quarter 2004	NO3-N	0.4900		
NEV96003/2002514	Bently Middle Ranch/DCSID	BR#1	NEV96003/2002514-BR#1	8	2nd Quarter 2004	TN	0.6000	<	
NEV96003/2002514	Bently Middle Ranch/DCSID	MW3	NEV96003/2002514-MW3	8	4th Quarter 2004	NO3-N	dry		
NEV96003/2002514	Bently Middle Ranch/DCSID	MW3	NEV96003/2002514-MW3	8	4th Quarter 2004	TN	dry		
NEV96003/2002514	Bently Middle Ranch/DCSID	MW4	NEV96003/2002514-MW4	8	4th Quarter 2004	NO3-N	0.0500	<	
NEV96003/2002514	Bently Middle Ranch/DCSID	MW4	NEV96003/2002514-MW4	8	4th Quarter 2004	TN	0.3000	<	
NEV96003/2002514	Bently Middle Ranch/DCSID	MW5	NEV96003/2002514-MW5	8	2nd Quarter 2004	NO3-N	0.5100		
NEV96003/2002514	Bently Middle Ranch/DCSID	MW5	NEV96003/2002514-MW5	8	2nd Quarter 2004	TN	0.6000	<	
NEV96003/2002514	Bently Middle Ranch/DCSID	MW5	NEV96003/2002514-MW5	8	3rd Quarter 2004	NO3-N	0.6700		
NEV96003/2002514	Bently Middle Ranch/DCSID	MW5	NEV96003/2002514-MW5	8	3rd Quarter 2004	TN	0.8000	<	
NEV96003/2002514	Bently Middle Ranch/DCSID	MW5	NEV96003/2002514-MW5	8	4th Quarter 2004	NO3-N	0.6200		
NEV96003/2002514	Bently Middle Ranch/DCSID	MW5	NEV96003/2002514-MW5	8	4th Quarter 2004	TN	1.1000		
NEV96003/2002514	Bently Middle Ranch/DCSID	MW6	NEV96003/2002514-MW6	8	2nd Quarter 2004	NO3-N	0.6900		
NEV96003/2002514	Bently Middle Ranch/DCSID	MW6	NEV96003/2002514-MW6	8	2nd Quarter 2004	TN	1.0000		
NEV96003/2002514	Bently Middle Ranch/DCSID	MW6	NEV96003/2002514-MW6	8	3rd Quarter 2004	NO3-N	0.6500		
NEV96003/2002514	Bently Middle Ranch/DCSID	MW6	NEV96003/2002514-MW6	8	3rd Quarter 2004	TN	0.8000		
NEV96003/2002514	Bently Middle Ranch/DCSID	MW6	NEV96003/2002514-MW6	8	4th Quarter 2004	NO3-N	0.3400		
NEV96003/2002514	Bently Middle Ranch/DCSID	MW6	NEV96003/2002514-MW6	8	4th Quarter 2004	TN	0.4000	<	

Table B-1. Summary of Discharge Monitoring Report Data for Carson Valley – Sorted by Group Number

Permit Number	Name	Site ID	Master Site ID	Group ID	Date	Parameter	Value	Remarks	Comments
NEV80033	DCSID Buckeye Res.	MW10	NEV80033-MW10	9	1st Quarter 2004	NO3-N	9.4000		
NEV80033	DCSID Buckeye Res.	MW10	NEV80033-MW10	9	1st Quarter 2004	TKN	0.1000	<	
NEV80033	DCSID Buckeye Res.	MW10	NEV80033-MW10	9	1st Quarter 2004	TN	9.4000		
NEV80033	DCSID Buckeye Res.	MW10	NEV80033-MW10	9	2nd Quarter 2004	NO3-N	9.8000		
NEV80033	DCSID Buckeye Res.	MW10	NEV80033-MW10	9	2nd Quarter 2004	TKN	0.1000	<	
NEV80033	DCSID Buckeye Res.	MW10	NEV80033-MW10	9	2nd Quarter 2004	TN	9.8000		
NEV80033	DCSID Buckeye Res.	MW10	NEV80033-MW10	9	3rd Quarter 2004	NO3-N	9.3000		
NEV80033	DCSID Buckeye Res.	MW10	NEV80033-MW10	9	3rd Quarter 2004	TKN	0.1000	<	
NEV80033	DCSID Buckeye Res.	MW10	NEV80033-MW10	9	3rd Quarter 2004	TN	9.3000		
NEV80033	DCSID Buckeye Res.	MW10	NEV80033-MW10	9	4th Quarter 2004	NO3-N	8.3000		
NEV80033	DCSID Buckeye Res.	MW10	NEV80033-MW10	9	4th Quarter 2004	TKN	0.1000	<	
NEV80033	DCSID Buckeye Res.	MW10	NEV80033-MW10	9	4th Quarter 2004	TN	8.3000		
NEV80033	DCSID Buckeye Res.	MW11	NEV80033-MW11	9	4th Quarter 2004	NO3-N	2.3000		
NEV80033	DCSID Buckeye Res.	MW11	NEV80033-MW11	9	4th Quarter 2004	TN	3.1000		
NEV80033	DCSID Buckeye Res.	MW12	NEV80033-MW12	9	1st Quarter 2004	NO3-N	4.2000		
NEV80033	DCSID Buckeye Res.	MW12	NEV80033-MW12	9	1st Quarter 2004	TKN	0.1000	<	
NEV80033	DCSID Buckeye Res.	MW12	NEV80033-MW12	9	1st Quarter 2004	TN	4.2000		
NEV80033	DCSID Buckeye Res.	MW12	NEV80033-MW12	9	2nd Quarter 2004	NO3-N	4.5000		
NEV80033	DCSID Buckeye Res.	MW12	NEV80033-MW12	9	2nd Quarter 2004	TKN	0.1000	<	
NEV80033	DCSID Buckeye Res.	MW12	NEV80033-MW12	9	2nd Quarter 2004	TN	4.5000		
NEV80033	DCSID Buckeye Res.	MW12	NEV80033-MW12	9	3rd Quarter 2004	NO3-N	3.9000		
NEV80033	DCSID Buckeye Res.	MW12	NEV80033-MW12	9	3rd Quarter 2004	TKN	0.1000	<	
NEV80033	DCSID Buckeye Res.	MW12	NEV80033-MW12	9	3rd Quarter 2004	TN	3.9000		
NEV80033	DCSID Buckeye Res.	MW12	NEV80033-MW12	9	4th Quarter 2004	NO3-N	4.0000		
NEV80033	DCSID Buckeye Res.	MW12	NEV80033-MW12	9	4th Quarter 2004	TKN	0.1000	<	
NEV80033	DCSID Buckeye Res.	MW12	NEV80033-MW12	9	4th Quarter 2004	TN	4.0000		
NEV80033	DCSID Buckeye Res.	MW13	NEV80033-MW13	9	1st Quarter 2004	NO3-N	2.1000		
NEV80033	DCSID Buckeye Res.	MW13	NEV80033-MW13	9	1st Quarter 2004	TKN	0.1000	<	
NEV80033	DCSID Buckeye Res.	MW13	NEV80033-MW13	9	1st Quarter 2004	TN	2.1000		
NEV80033	DCSID Buckeye Res.	MW13	NEV80033-MW13	9	2nd Quarter 2004	NO3-N	0.7000		
NEV80033	DCSID Buckeye Res.	MW13	NEV80033-MW13	9	2nd Quarter 2004	TKN	0.1000	<	
NEV80033	DCSID Buckeye Res.	MW13	NEV80033-MW13	9	2nd Quarter 2004	TN	0.8000	<	
NEV80033	DCSID Buckeye Res.	MW13	NEV80033-MW13	9	3rd Quarter 2004	NO3-N	2.1000		
NEV80033	DCSID Buckeye Res.	MW13	NEV80033-MW13	9	3rd Quarter 2004	TKN	0.1000	<	
NEV80033	DCSID Buckeye Res.	MW13	NEV80033-MW13	9	3rd Quarter 2004	TN	2.1000		
NEV80033	DCSID Buckeye Res.	MW13	NEV80033-MW13	9	4th Quarter 2004	NO3-N	2.0000		
NEV80033	DCSID Buckeye Res.	MW13	NEV80033-MW13	9	4th Quarter 2004	TKN	0.1000	<	
NEV80033	DCSID Buckeye Res.	MW13	NEV80033-MW13	9	4th Quarter 2004	TN	no data		
NEV80033	DCSID Buckeye Res.	MW14	NEV80033-MW14	9	1st Quarter 2004	NO3-N	8.0000		
NEV80033	DCSID Buckeye Res.	MW14	NEV80033-MW14	9	1st Quarter 2004	TKN	0.1000	<	
NEV80033	DCSID Buckeye Res.	MW14	NEV80033-MW14	9	1st Quarter 2004	TN	8.0000		
NEV80033	DCSID Buckeye Res.	MW14	NEV80033-MW14	9	2nd Quarter 2004	NO3-N	2.9000		
NEV80033	DCSID Buckeye Res.	MW14	NEV80033-MW14	9	2nd Quarter 2004	TKN	0.1000	<	
NEV80033	DCSID Buckeye Res.	MW14	NEV80033-MW14	9	2nd Quarter 2004	TN	2.9000		

Table B-1. Summary of Discharge Monitoring Report Data for Carson Valley – Sorted by Group Number

Permit Number	Name	Site ID	Master Site ID	Group ID	Date	Parameter	Value	Remarks	Comments
NEV80033	DCSID Buckeye Res.	MW14	NEV80033-MW14	9	3rd Quarter 2004	NO3-N	8.0000		
NEV80033	DCSID Buckeye Res.	MW14	NEV80033-MW14	9	3rd Quarter 2004	TKN	0.1000	<	
NEV80033	DCSID Buckeye Res.	MW14	NEV80033-MW14	9	3rd Quarter 2004	TN	8.0000		
NEV80033	DCSID Buckeye Res.	MW14	NEV80033-MW14	9	4th Quarter 2004	NO3-N	7.1000		
NEV80033	DCSID Buckeye Res.	MW14	NEV80033-MW14	9	4th Quarter 2004	TKN	0.1000	<	
NEV80033	DCSID Buckeye Res.	MW14	NEV80033-MW14	9	4th Quarter 2004	TN	7.3000		
NEV80033	DCSID Buckeye Res.	MW15	NEV80033-MW15	9	1st Quarter 2004	NO3-N	9.5000		
NEV80033	DCSID Buckeye Res.	MW15	NEV80033-MW15	9	1st Quarter 2004	TKN	0.1000	<	
NEV80033	DCSID Buckeye Res.	MW15	NEV80033-MW15	9	1st Quarter 2004	TN	9.5000		
NEV80033	DCSID Buckeye Res.	MW15	NEV80033-MW15	9	2nd Quarter 2004	NO3-N	3.1000		
NEV80033	DCSID Buckeye Res.	MW15	NEV80033-MW15	9	2nd Quarter 2004	TKN	0.1000	<	
NEV80033	DCSID Buckeye Res.	MW15	NEV80033-MW15	9	2nd Quarter 2004	TN	3.1000		
NEV80033	DCSID Buckeye Res.	MW15	NEV80033-MW15	9	3rd Quarter 2004	NO3-N	10.0000		
NEV80033	DCSID Buckeye Res.	MW15	NEV80033-MW15	9	3rd Quarter 2004	TKN	0.1000	<	
NEV80033	DCSID Buckeye Res.	MW15	NEV80033-MW15	9	3rd Quarter 2004	TN	10.0000		
NEV80033	DCSID Buckeye Res.	MW15	NEV80033-MW15	9	4th Quarter 2004	NO3-N	6.1000		
NEV80033	DCSID Buckeye Res.	MW15	NEV80033-MW15	9	4th Quarter 2004	TKN	0.1000	<	
NEV80033	DCSID Buckeye Res.	MW15	NEV80033-MW15	9	4th Quarter 2004	TN	6.1000		
NEV80033	DCSID Buckeye Res.	MW2	NEV80033-MW2	9	1st Quarter 2004	NO3-N	6.8000		
NEV80033	DCSID Buckeye Res.	MW2	NEV80033-MW2	9	1st Quarter 2004	TKN	0.1000	<	
NEV80033	DCSID Buckeye Res.	MW2	NEV80033-MW2	9	1st Quarter 2004	TN	6.8000		
NEV80033	DCSID Buckeye Res.	MW2	NEV80033-MW2	9	2nd Quarter 2004	NO3-N	7.3000		
NEV80033	DCSID Buckeye Res.	MW2	NEV80033-MW2	9	2nd Quarter 2004	TKN	0.1000	<	
NEV80033	DCSID Buckeye Res.	MW2	NEV80033-MW2	9	2nd Quarter 2004	TN	7.3000		
NEV80033	DCSID Buckeye Res.	MW2	NEV80033-MW2	9	3rd Quarter 2004	NO3-N	7.3000		
NEV80033	DCSID Buckeye Res.	MW2	NEV80033-MW2	9	3rd Quarter 2004	TKN	0.1000	<	
NEV80033	DCSID Buckeye Res.	MW2	NEV80033-MW2	9	3rd Quarter 2004	TN	7.3000		
NEV80033	DCSID Buckeye Res.	MW2	NEV80033-MW2	9	4th Quarter 2004	NO3-N	6.6000		
NEV80033	DCSID Buckeye Res.	MW2	NEV80033-MW2	9	4th Quarter 2004	TKN	0.1000	<	
NEV80033	DCSID Buckeye Res.	MW2	NEV80033-MW2	9	4th Quarter 2004	TN	6.6000		
NEV96006	Williams Ridge Technology Park	MW1	NEV96006-MW1	10	1st Quarter 2004	NO3-N	0.0500	<	
NEV96006	Williams Ridge Technology Park	MW1	NEV96006-MW1	10	1st Quarter 2004	TN	0.4000	<	
NEV96006	Williams Ridge Technology Park	MW1	NEV96006-MW1	10	2nd Quarter 2004	NO3-N	0.0500	<	
NEV96006	Williams Ridge Technology Park	MW1	NEV96006-MW1	10	2nd Quarter 2004	TN	0.3000	<	
NEV96006	Williams Ridge Technology Park	MW1	NEV96006-MW1	10	3rd Quarter 2004	NO3-N	0.0500	<	
NEV96006	Williams Ridge Technology Park	MW1	NEV96006-MW1	10	3rd Quarter 2004	TN	0.8000		

