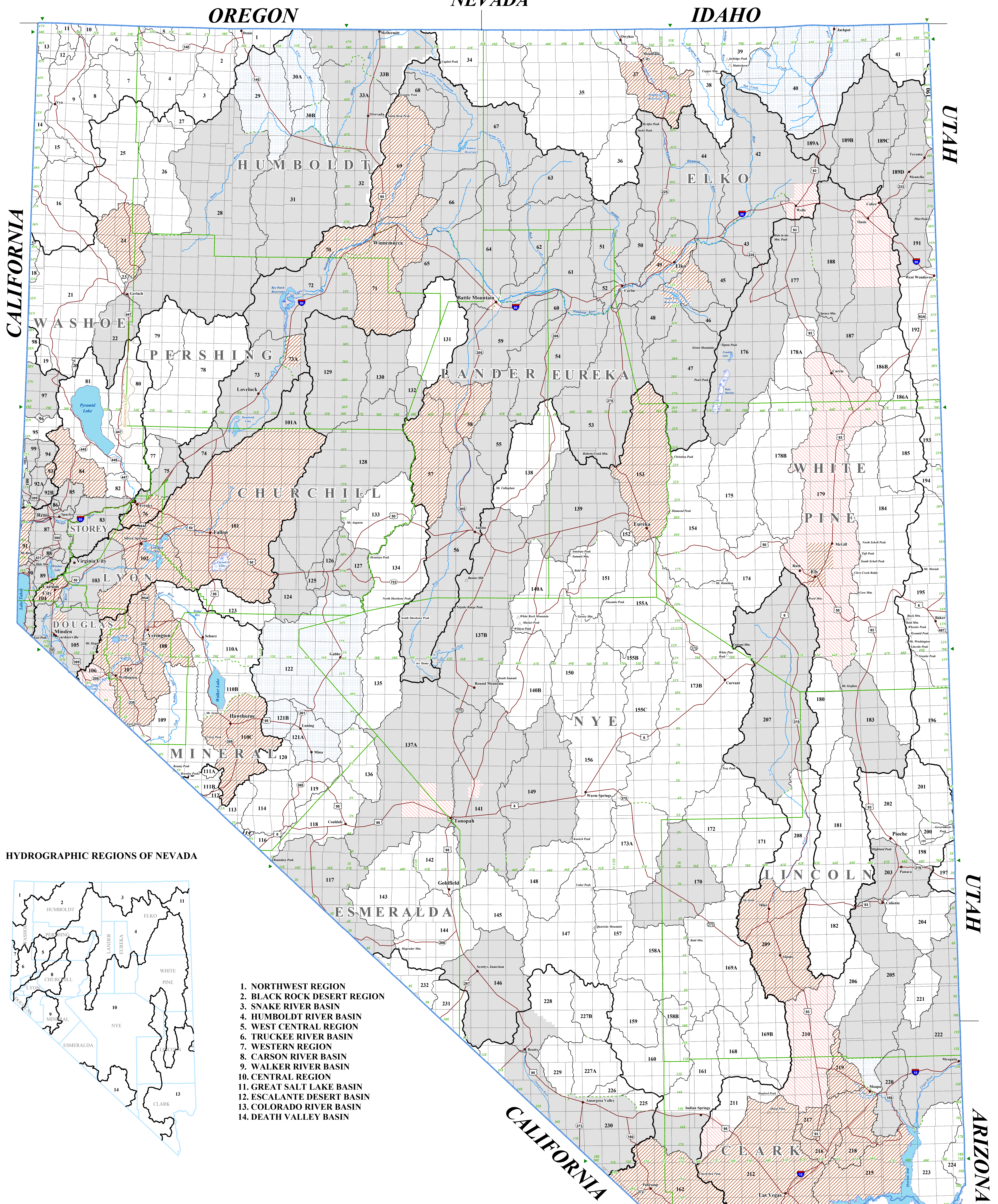
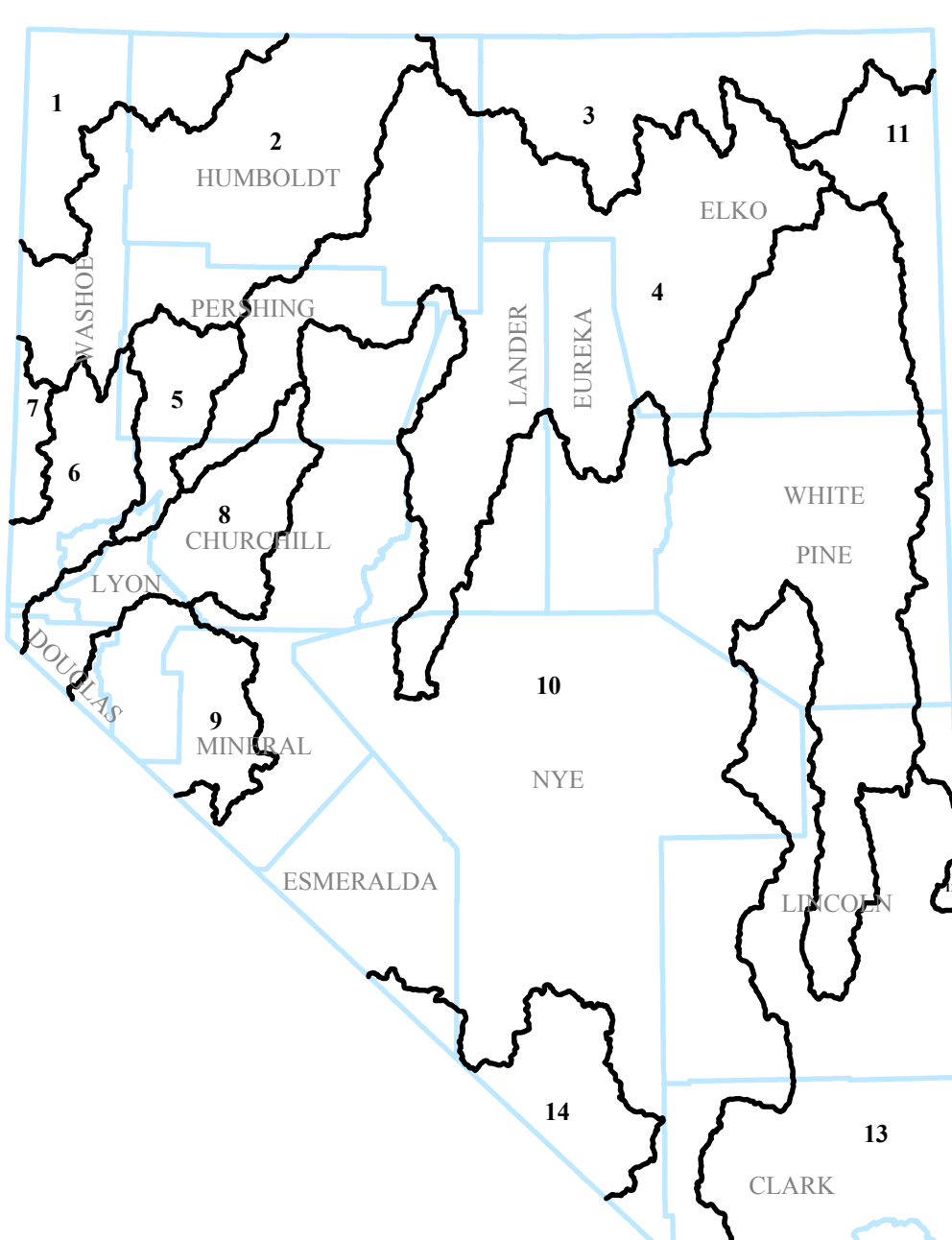


DESIGNATED GROUNDWATER BASINS OF NEVADA



HYDROGRAPHIC REGIONS OF NEVADA



1. NORTHWEST REGION
2. BLACK ROCK DESERT REGION
3. SNAKE RIVER BASIN
4. HUMBOLDT RIVER BASIN
5. WEST CENTRAL REGION
6. TRUCKEE RIVER BASIN
7. WESTERN REGION
8. CARSON RIVER BASIN
9. WALKER RIVER BASIN
10. CENTRAL REGION
11. GREAT SALT LAKE BASIN
12. ESCALANTE DESERT BASIN
13. COLORADO RIVER BASIN
14. DEATH VALLEY BASIN

ADMINISTRATIVE GROUNDWATER BASINS

1. NORTHWEST REGION

1. PUEBLO V.
2. CONTINENTAL LAKE V.
3. GREELY LAKE V.
4. VIRGO V.
5. SAGE HEN V.
6. GUNN V.
7. SPOON LAKE V.
8. MASSACHE LAKE V.
9. LONG V.
10. MACEY FLAT
11. COLEMAN V.
12. MOSQUITO V.
13. WARNER V.
14. BURRUP V.
15. BOULDER V.
16. DUCK LAKE V.

2. BLACK ROCK DESERT REGION

17. PEGRAM FLAT
18. PAINTERS FLAT
19. DRY V.
20. SAND V.
21. SMOKE CREEK DESERT
22. SAN EMERITO DESERT
23. GRANITE BASIN V.
24. BUALAPAH FLAT
25. HIGH ROCK LAKE VALLEY
26. MID MEADOW
27. SMOKE LAKE V.
28. BLACK ROCK DESERT
29. PINE FOREST V.
30. KING HOLE V.
31. CALBO-KING-SUBAREA (B) SOD HOUSE SUBAREA
32. DESERT V.
33. SILVER SLOTT V.
34. QUINN RIVER V.
35. (A) GOROVADA SUBAREA (B) MADERMIT SUBAREA

3. SNAKE RIVER BASIN

36. LITTLE OWYHEE RIVER AREA
37. SOUTH FORK OWYHEE RIVER AREA
38. INDEPENDENCE V.
39. OWYHEE RIVER AREA
40. BURNING RIVER AREA
41. CARBIDE RIVER AREA
42. GORRICK RIVER AREA
43. DOORIE CREEK AREA

4. HUMBOLDT RIVER BASIN

44. MARYS RIVER AREA
45. STAR VALLEY AREA
46. NORTH FORK AREA
47. LAMBOLLY V.
48. SOUTH FORK AREA
49. HUNTINGTON
50. FOLEY CREEK-TENNIE CREEK AREA
51. ELKO SEGMENT
52. SISE CREEK AREA
53. MAGICK CREEK AREA
54. MARYS CREEK AREA

5. WEST CENTRAL REGION

55. CRESCENT V.
56. CARROLLAKE V.
57. UPPER REESE RIVER V.
58. ANTELOPE V.
59. MIDDLE REESE RIVER V.

6. TRUCKEE RIVER BASIN

60. WINDMILL LAKE V.
61. PRINCE LAKE V.
62. DOGGY FLAT
63. TRACY SEGMENT
64. WARD SPRINGS V.
65. SPANISH SPRINGS V.
66. SEN V.
67. TRUCKEE MEADOWS
68. PLEASANT V.
69. WASSON V.
70. LAKE TABOR BASIN
71. TRUCKEE CANYON SEGMENT

7. WESTERN REGION

72. LEMMON V.
73. (A) WESTERN PART (B) EASTERN PART
74. ANTELOPE V.
75. SMITH V.
76. MASON V.
77. EAST WALKER AREA
78. (A) SCHURZ SUBAREA (B) LAKE SUBAREA (C) WISSEY FLAT (D) WATSONS SUBAREA

10. CENTRAL REGION

79. (A) LOWER REESE RIVER V. (B) UPPER REESE RIVER V.
80. WILHELM V.
81. BOLLER FLAT
82. ROCK CREEK V.
83. WILLOW CREEK V.
84. CLAYTON AREA
85. POMPANOON V.
86. KELLY CREEK AREA
87. LITTLE HUMBOLDT V.
88. HADDOCK CREEK AREA
89. PARADISE V.
90. WENNEMUCCA SEGMENT
91. GRASS V.
92. DELAY AREA
93. LOVELOCK V.
94. (A) ORONA SUBAREA (B) WHITE PLAINS
95. BEADY HOT SPRINGS AREA
96. FRENCH AREA
97. FIREBALL V.
98. BEENA VISTA V.
99. PLEASANT V.
100. KIMPA V.
101. EDWARDS CREEK V.
102. SMITH CREEK V.
103. WENNEMUCCA LAKE V.
104. PRINCE LAKE V.
105. DOGGY FLAT
106. TRACY SEGMENT
107. WARD SPRINGS V.
108. SPANISH SPRINGS V.
109. SEN V.
110. TRUCKEE MEADOWS
111. PLEASANT V.
112. WASSON V.
113. LAKE TABOR BASIN
114. TRUCKEE CANYON SEGMENT

11. GREAT SALT LAKE BASIN

115. ALKALAI V. (MINERAL)
116. (A) NORTHERN PART (B) SOUTHERN PART
117. HENDON V.
118. TILES MARSH V.
119. ASHBY V.
120. QUEEN V.
121. FISH LAKE V.
122. CALUMEN SALT MARSH V.
123. REDWOODS SALT MARSH V.
124. GARFIELD FLAT
125. SODA SPRING V.
126. (A) EASTERN PART (B) WESTERN PART
127. GIBBS V.
128. RAWHIDE FLATS
129. FAYBURN V.
130. STINGAREE V.
131. COPKICK V.
132. EASTGATE VALLEY AREA
133. DEER V.
134. BEENA VISTA V.
135. PLEASANT V.
136. BUTTE FLAT
137. BERRY V.
138. EDWARDS CREEK V.
139. MONTE CRISTO V.
140. BIRD SMOKY V.
141. (A) ISOPAH FLAT (B) NORTHERN PART
142. GRASS V.
143. KOBBI V.
144. MONITOR V.
145. (A) NORTHERN PART (B) SOUTHERN PART
146. RAUSTON V.
147. ALKALAI SPRING V. (ESMERALDA)
148. CLAYTON V.
149. LIDA V.
150. STONSWALL V.
151. SARCOBATHS FLAT
152. CALVELL V.
153. CACTUS FLAT
154. STONE CABIN V.
155. LITTLE FISH LAKE V.
156. ANTELOPE V. (HUMBER & NYE)
157. PEASANT V.
158. STEVENS BASIN
159. DIAMOND V.
160. SPOON V.
161. RED ROCK V.
162. COLD SPRING V.
163. (A) LONG V.

12. ESCALANTE DESERT BASIN

164. (A) NORTHERN PART (B) SOUTHERN PART

13. COLORADO RIVER BASIN

165. ELBORADO V.
166. THREE LAKES V.
167. (A) NORTHERN PART (B) SOUTHERN PART
168. TRIPPOON V. (ESKABOO V.)
169. (A) NORTHERN PART (B) SOUTHERN PART
170. WILDY RIVER SPRINGS V.
171. COAL V.
172. GARDEN V.
173. BALDWIN V.
174. JAKES V.
175. LONCK V.
176. RUBY V.
177. CLOVER V.
178. BUTTE V.
179. (A) NORTHERN PART (B) SOUTHERN PART
180. CAYE V.
181. DRY LAKE V.
182. DELAMAR V.
183. LAKE V.
184. SPRING V.
185. TERRY V.
186. ANTELOPE V. (WHITE PINE & ELKO)
187. (A) SOUTHERN PART (B) NORTHERN PART
188. GOSHUTE V.
189. INDEPENDENCE V.
190. THOUSAND SPRINGS V.
191. (A) HERBIE SPRING (B) HANCOCK SPRING AREA
192. (A) ROCKY MOUNTAIN AREA (B) MONTELEONE-CRITTENDEN CREEK AREA (C) MONTELEONE V.
193. GROSS CREEK V.
194. PILOT CREEK V.
195. GREAT SALT LAKE DESERT
196. DEEP CREEK V.
197. PEASANT V.
198. HAMBIN V.
199. LOWER MEADOW VALLEY WASH
200. KANE SPRINGS V.
201. WHITE RIVER V.
202. PARRICK V.
203. FAIRBANKS V.
204. COPPOH SPRING V.
205. THREE LAKES V. (SOUTHERN PART)
206. LAS VEGAS V.

14. DEATH VALLEY BASIN

207. MERCURY V.
208. ROCK V.
209. STEPTOE V.
210. FORTYFIVE CANYON
211. (A) JACKSON FLATS (B) BLACKBOARD MESA
212. OASIS V.
213. CRATER FLAT
214. AMARGOSA V.
215. GRAPEVINE CANYON
216. ORIENTAL WASH
217. (A) NORTHERN PART (B) SOUTHERN PART
218. (A) JACKSON FLATS (B) BLACKBOARD MESA
219. (A) UPPER MOAPA V. (B) LOWER MOAPA V.
220. (A) CALIBORN WASH (B) WILDY RIVER SPRINGS AREA (C) UPPER MOAPA V.)
221. GOLD BUTTE AREA
222. GREEN WOOD BASIN
223. * NONGRASSING PART OF THE COLORADO RIVER BASIN

15. COLORADO RIVER V.

213. COLORADO RIVER V.
214. PRUE V.
215. BLACK MOUNTAINS AREA
216. GANSET V. (DRY LAKE V.)
217. HEEDEN V. (DORTIP)
218. CALIBORN WASH
219. WILDY RIVER SPRINGS AREA (UPPER MOAPA V.)
220. LOWER MOAPA V.
221. TULE DESERT
222. VIRGIN RIVER V.
223. GOLD BUTTE AREA
224. GREEN WOOD BASIN
225. * NONGRASSING PART OF THE COLORADO RIVER BASIN

16. DEATH VALLEY BASIN

225. MERCURY V.
226. ROCK V.
227. STEPTOE V.
228. FORTYFIVE CANYON
229. (A) JACKSON FLATS (B) BLACKBOARD MESA
230. OASIS V.
231. CRATER FLAT
232. AMARGOSA V.
233. GRAPEVINE CANYON
234. ORIENTAL WASH
235. (A) NORTHERN PART (B) SOUTHERN PART

17. ESCALANTE DESERT BASIN

164. (A) NORTHERN PART (B) SOUTHERN PART

18. COLORADO RIVER BASIN

165. ELBORADO V.
166. THREE LAKES V.
167. (A) NORTHERN PART (B) SOUTHERN PART
168. TRIPPOON V. (ESKABOO V.)
169. (A) NORTHERN PART (B) SOUTHERN PART
170. WILDY RIVER SPRINGS V.
171. COAL V.
172. GARDEN V.
173. BALDWIN V.
174. JAKES V.
175. LONCK V.
176. RUBY V.
177. CLOVER V.
178. BUTTE V.
179. (A) NORTHERN PART (B) SOUTHERN PART
180. CAYE V.
181. DRY LAKE V.
182. DELAMAR V.
183. LAKE V.
184. SPRING V.
185. TERRY V.
186. ANTELOPE V. (WHITE PINE & ELKO)
187. (A) SOUTHERN PART (B) NORTHERN PART
188. GOSHUTE V.
189. INDEPENDENCE V.
190. THOUSAND SPRINGS V.
191. (A) HERBIE SPRING (B) HANCOCK SPRING AREA
192. (A) ROCKY MOUNTAIN AREA (B) MONTELEONE-CRITTENDEN CREEK AREA (C) MONTELEONE V.)
193. GROSS CREEK V.
194. PILOT CREEK V.
195. GREAT SALT LAKE DESERT
196. DEEP CREEK V.
197. PEASANT V.
198. HAMBIN V.
199. LOWER MEADOW VALLEY WASH
200. KANE SPRINGS V.
201. WHITE RIVER V.
202. PARRICK V.
203. FAIRBANKS V.
204. COPPOH SPRING V.
205. THREE LAKES V. (SOUTHERN PART)
206. LAS VEGAS V.

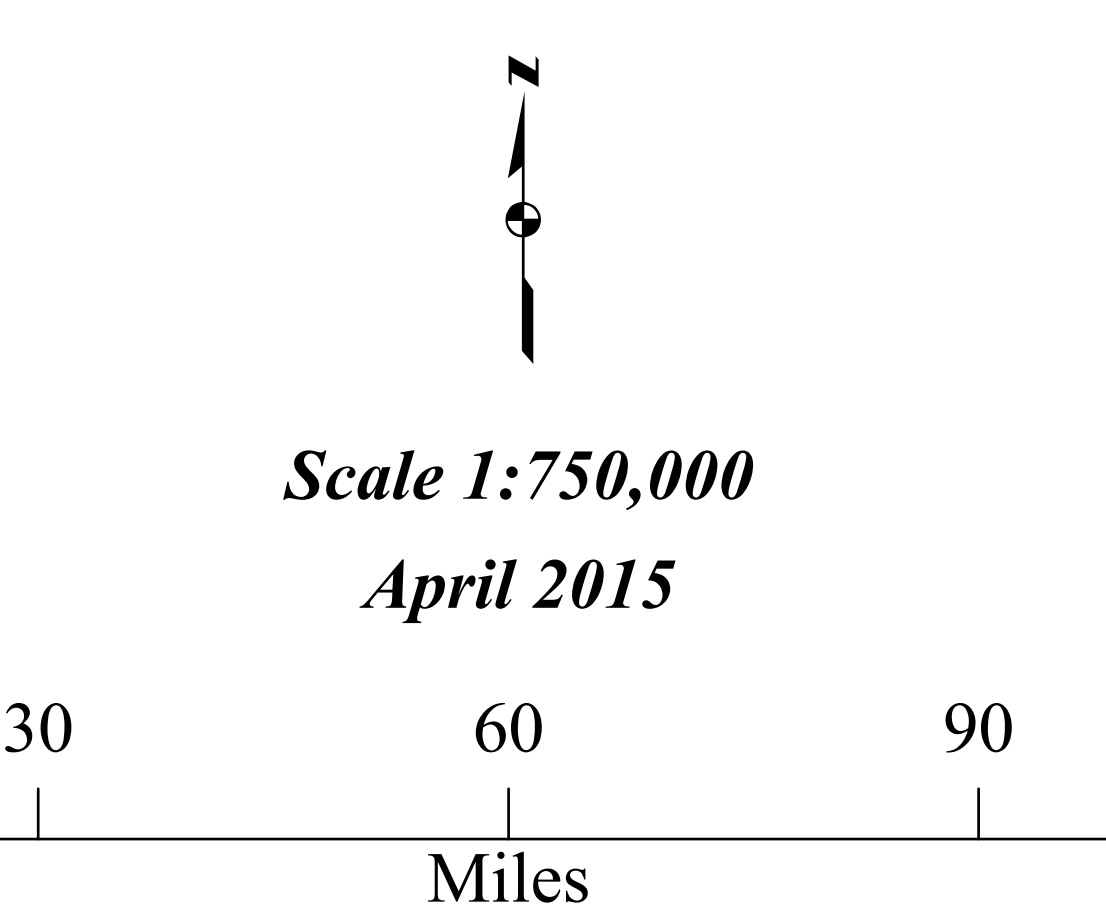
NOTE
This map indicates the designation of administrative groundwater basins in the state at the time of publication. For specific information regarding designation orders and the delineation of the administrative groundwater basins the reader should contact the Nevada Division of Water Resources

EXPLANATION

- Regional Boundary
- Administrative Boundary
- Inferred Boundary Line
- State Line
- County Line
- Time/Range Line
- Road
- City
- Mountain Peak
- Water Body
- Marsh
- Dry Lake

DESIGNATED BASINS

- Designated (Irrigation Desired)
- Designated (Preferred Use - Irrigation Desired)



Department of Conservation and Natural Resources
Office of the State Engineer
Division of Water Resources
901 S. Stewart Street
Carson City, Nevada 89701

Jason King, P.E.
State Engineer