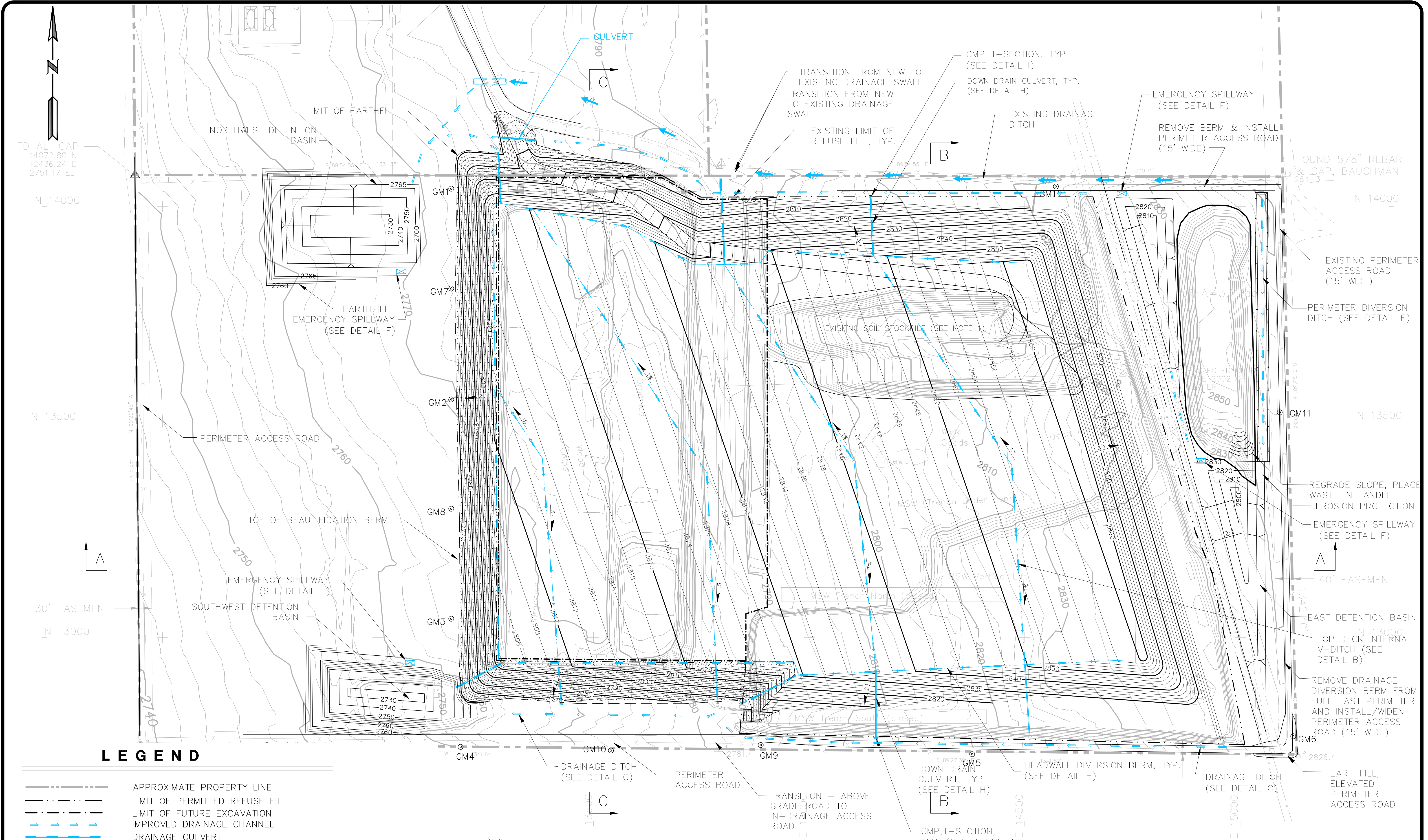


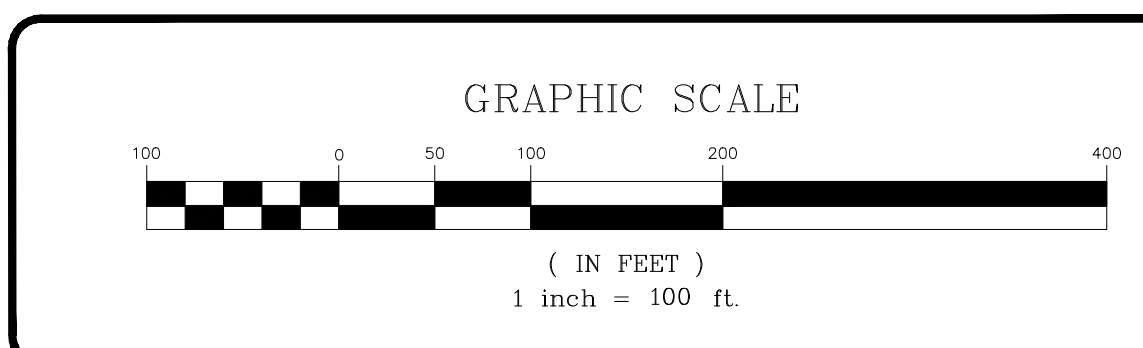
S:\DWG\NVE\Master grading R3.dwg 5/20/2008 9:53:49 AM PDT



LEGEND

- APPROXIMATE PROPERTY LINE
- LIMIT OF PERMITTED REFUSE FILL
- LIMIT OF FUTURE EXCAVATION
- IMPROVED DRAINAGE CHANNEL
- DRAINAGE CULVERT
- SURFACE WATER SHEET FLOW
- EXISTING DRAINAGE DITCH
- EXISTING CONTOUR
- PROPOSED CONTOUR
- EARTH FILL BERM
- LANDFILL GAS MONITORING PROBE

Note:
Base topography supplied by Nye County 4/6/2006.



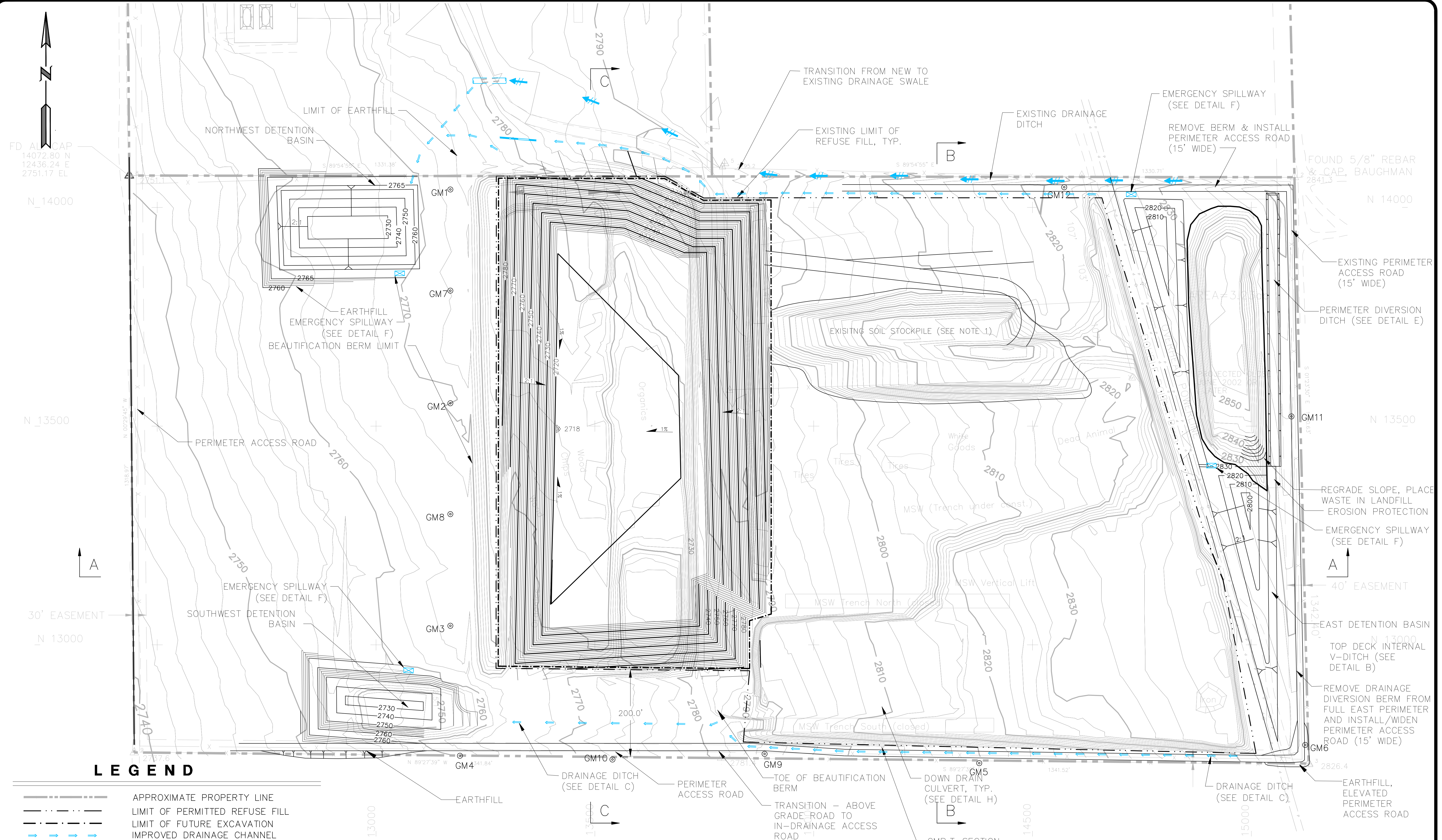
DATE: APRIL 2008	DES/CHK: SDS/JAW
DRAWN: KMS	APPROVED: JAW
REV. DATE	DESCRIPTION

PAHRUMP LANDFILL
SOUTHWEST ENVIRONMENTAL SERVICES, INC.
NYE COUNTY, NEVADA

FINAL GRADING PLAN

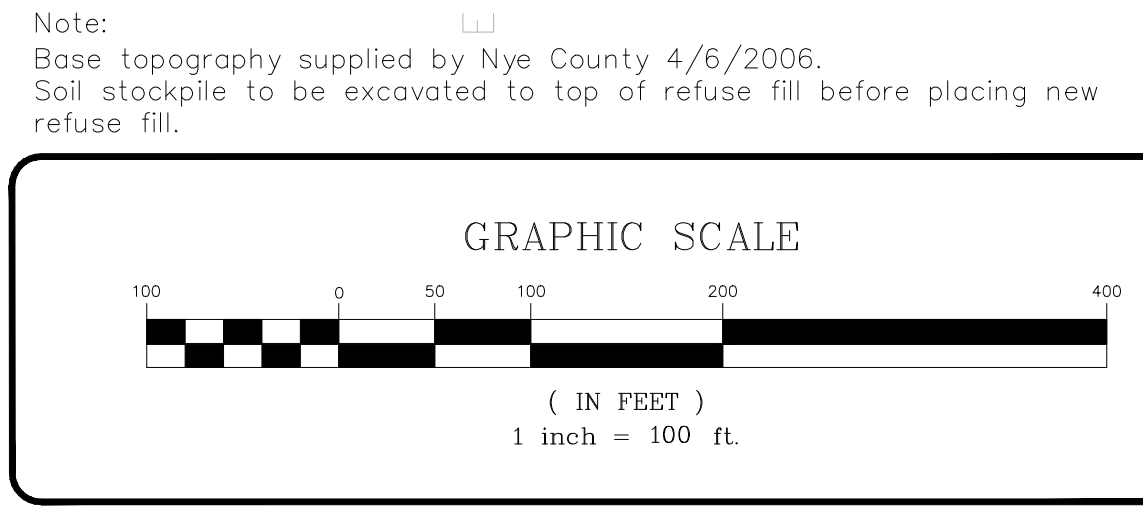
DRAWING
1
PROJECT NO.
198-1.7

S:\DWG\NVE_Moster grading R3.dwg 5/20/2008 9:53:49 AM PDT



LEGEND

- APPROXIMATE PROPERTY LINE
- LIMIT OF PERMITTED REFUSE FILL
- LIMIT OF FUTURE EXCAVATION
- IMPROVED DRAINAGE CHANNEL
- DRAINAGE CULVERT
- SURFACE WATER SHEET FLOW
- EXISTING DRAINAGE DITCH
- EXISTING CONTOUR
- PROPOSED CONTOUR
- EARTH FILL BERM
- LANDFILL GAS MONITORING PROBE

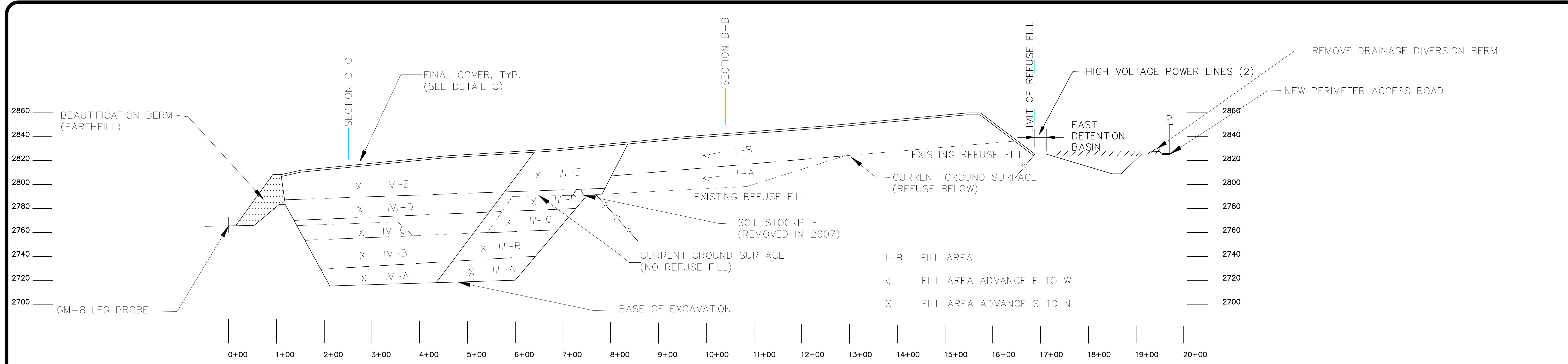


DATE: APRIL 2008	DES/CHK: SDS/JAW
DRAWN: KMS	APPROVED: JAW
REV. DATE	DESCRIPTION

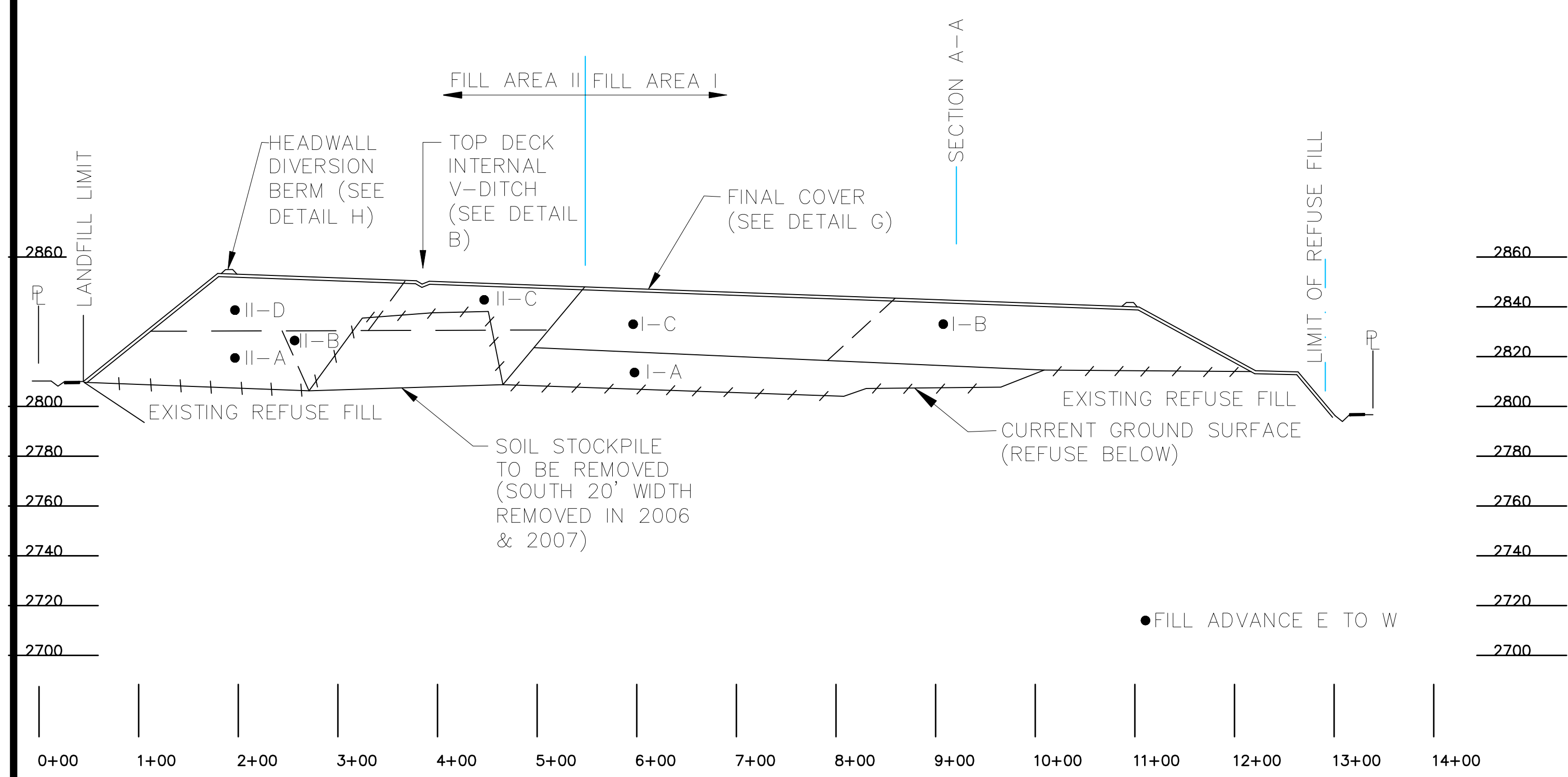
PAHRUMP LANDFILL
SOUTHWEST ENVIRONMENTAL SERVICES, INC.
NYE COUNTY, NEVADA

EXCAVATION PLAN

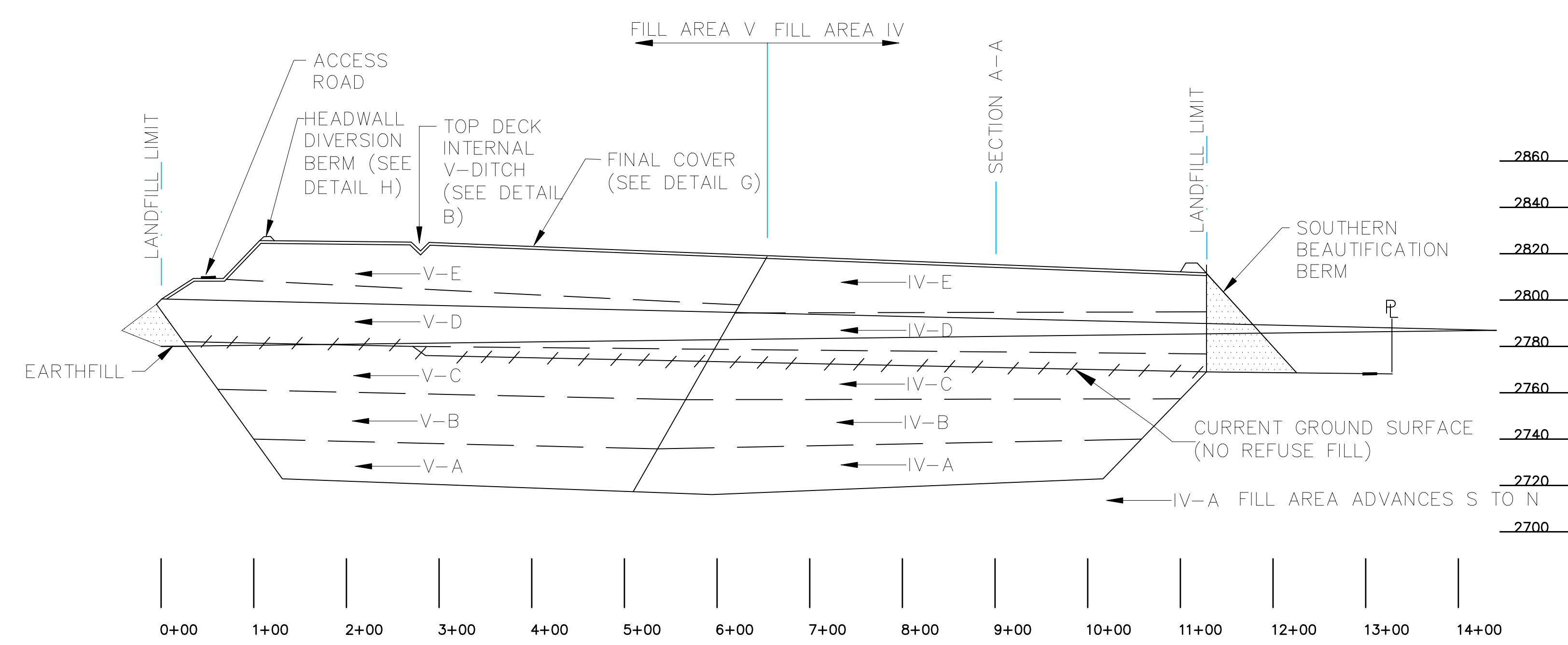
DRAWING
2
PROJECT NO.
198-1.7



SECTION A-A

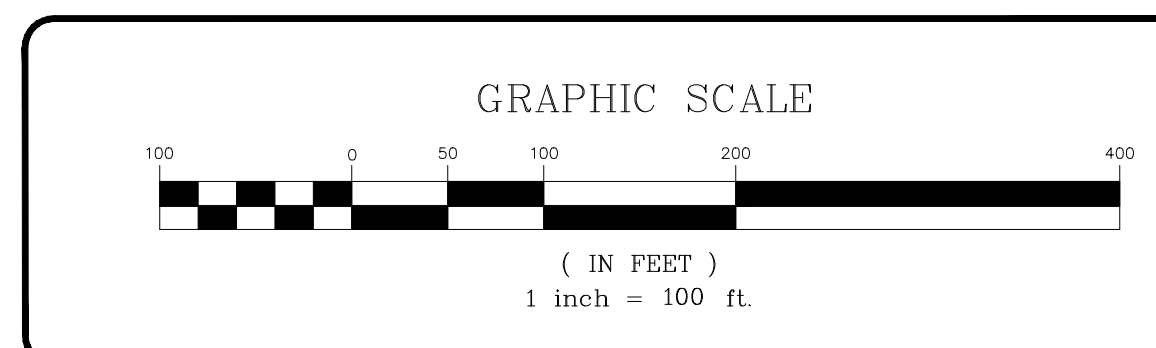


SECTION B-B



SECTION C-C

S:\DWG\NYE\Master grading R3.dwg 5/20/2008 9:53:49 AM PDT



DATE:	APRIL 2008	DES/CHK:	SDS/JAW
DRAWN:	KMS	APPROVED:	JAW
REV.	DATE	DESCRIPTION	APP.

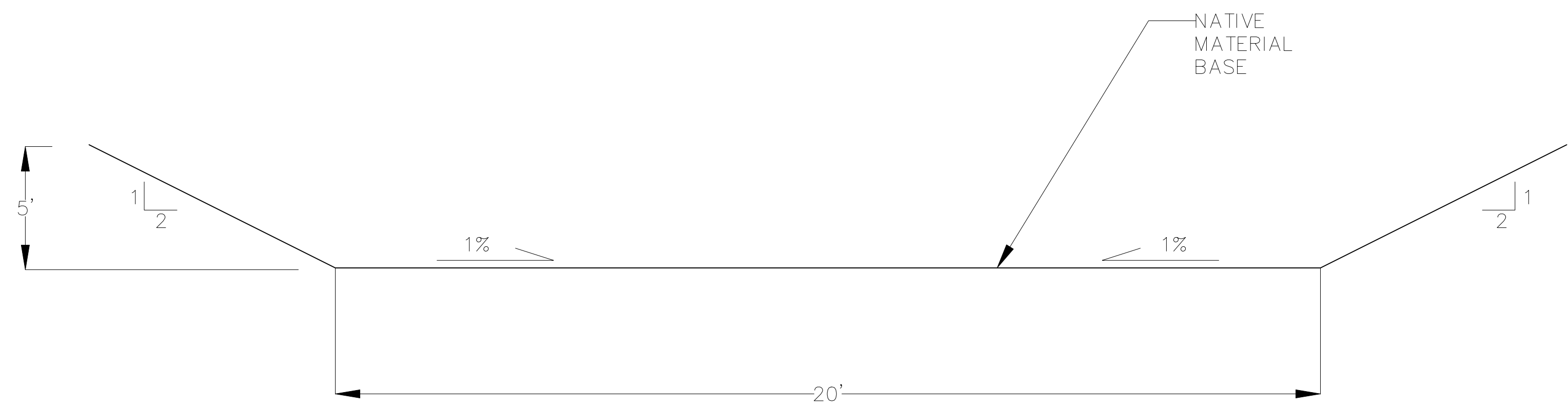
PAHRUMP LANDFILL
SOUTHWEST ENVIRONMENTAL SERVICES, INC.
NYE COUNTY, NEVADA

FILL & EXCAVATION SEQUENCE SECTIONS

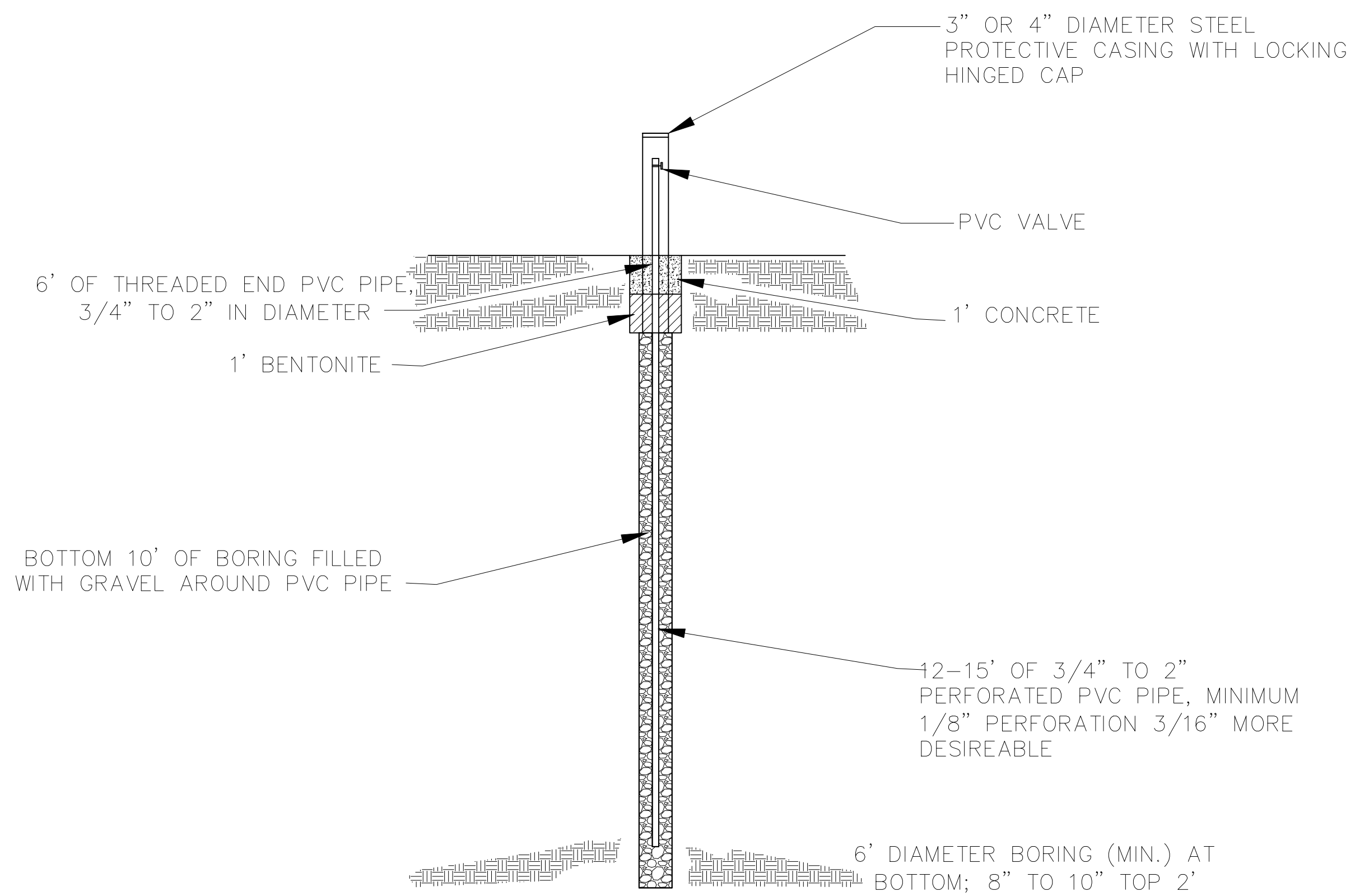
DRAWING

4

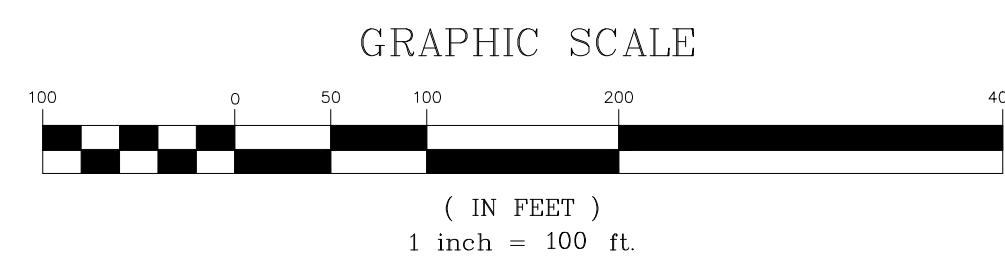
PROJECT NO.
198-1.7



PERIMETER DIVERSION DITCH
DETAIL D



TYPICAL LANDFILL GAS MONITORING
PORT FOR QUARTERLY METHANE
MONITORING
DETAIL F
NOT TO SCALE



DATE:	APRIL 2008	DES/CHK:	SDS/JAW
DRAWN:	KMS	APPROVED:	JAW
REV.	DATE	DESCRIPTION	APP.

PAHRUMP LANDFILL
SOUTHWEST ENVIRONMENTAL SERVICES, INC.
NYE COUNTY, NEVADA
DETAILS

DRAWING
5
PROJECT NO.
198-1.7