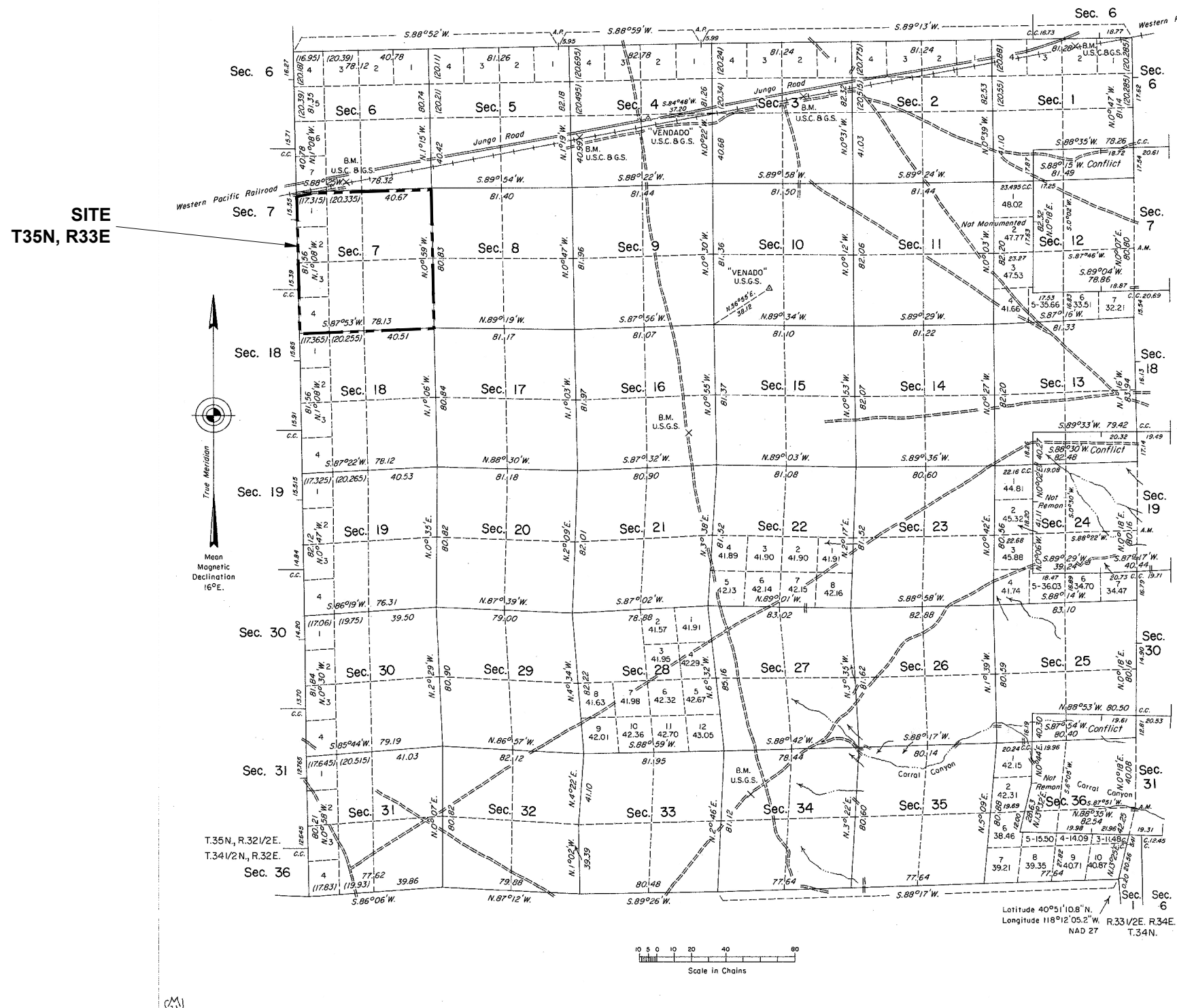


TOWNSHIP 35 NORTH, RANGE 33 EAST, OF THE MOUNT DIABLO MERIDIAN, NEVADA
DEPENDENT RESURVEY

T.35 1/2N, R.33E. T.35N, R.34E.



History of the earlier surveys is contained in the field notes.

The north boundary of T. 34 N., R. 33 E., was dependently resurveyed concurrently under Group No. 654.

This plat represents the dependent resurvey of the east, west and north boundaries and the subdivisional lines of T. 35 N., R. 33 E., Mount Diablo Meridian, Nevada, designed to restore the corners in their true original locations according to the best available evidence.

Lottings and areas, except as indicated hereon, are as shown on the plat approved January 3, 1876.

Survey executed by Ronald E. Williams, Cadastral Surveyor, beginning May 10, 1988, and completed October 21, 1988, under Special Instructions dated April 25, 1988, and Supplemental Special Instructions dated August 17, 1988, for Group No. 656, Nevada.

UNITED STATES DEPARTMENT OF THE INTERIOR
BUREAU OF LAND MANAGEMENT

Reno, Nevada September 30, 1991

This plat is strictly conformable to the approved field notes, and the survey, having been correctly executed in accordance with the requirements of law and the regulations of this Bureau, is hereby accepted.

For the Director
John J. Parish
Chief Cadastral Surveyor, Nevada

NOTE

1. SURVEY INFORMATION OBTAINED FROM BLM NEVADA STATE OFFICE (<http://www.nv.blm.gov/LandRecords/>).
DATE OF SURVEY: SEPTEMBER 30, 1991.

SITE PROPERTY MAP WITH TOWNSHIP AND RANGE

FIGURE 2

