

Frequently Asked Questions for Change of Location Approvals for Temporary Construction Sources (COLAs)



Nevada Division of Environmental Protection
Bureau of Air Pollution Control (BAPC)
Permitting Branch
901 South Stewart Street, Suite 4001
Carson City, Nevada 89701-5249
Phone (775) 687-9349

May 2023

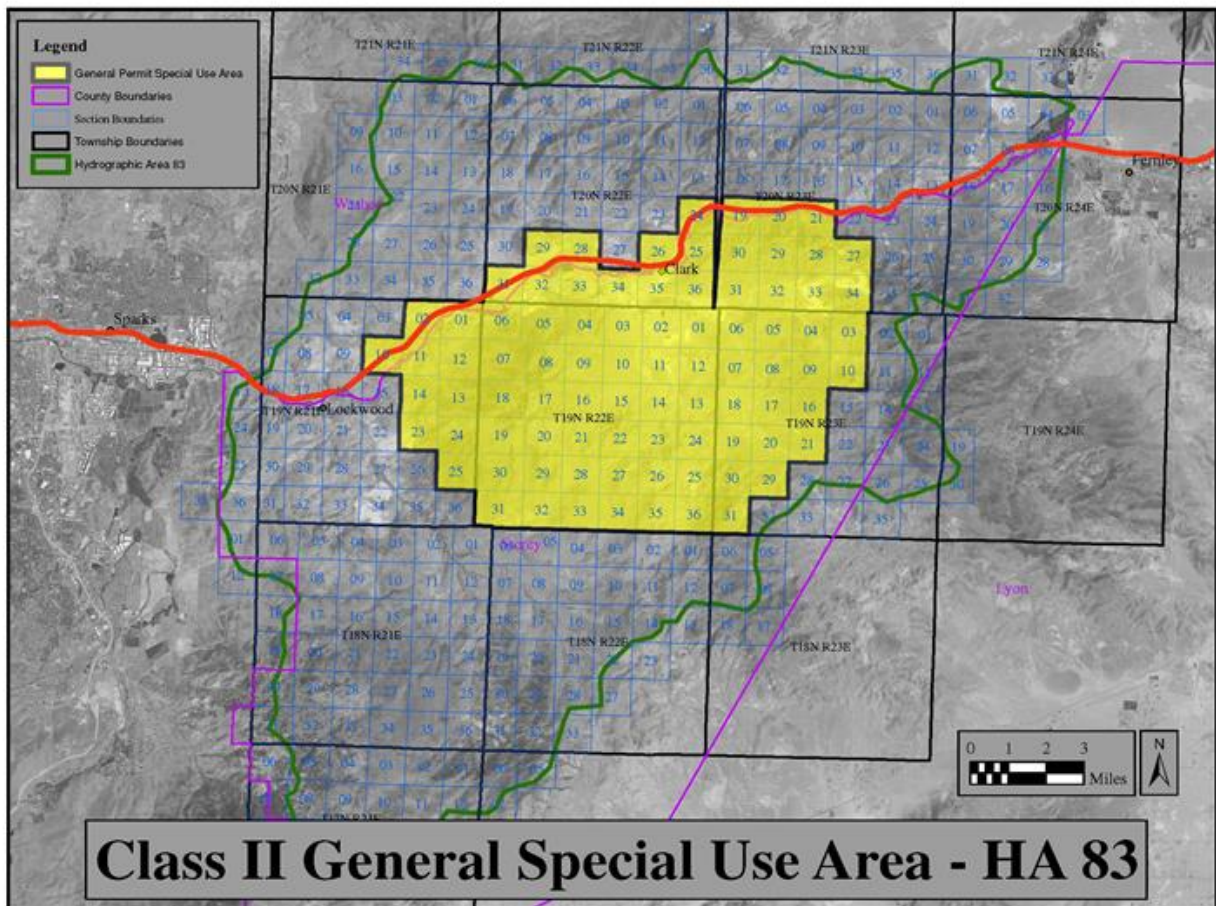
Disclaimer: The BAPC reserves the right to modify this guidance at any time. This document supersedes any previous documents that relate to COLAs issued by the BAPC.

1. What is the processing time frame for COLAs?
 - *Once we have received a complete application and full payment, the BAPC has 10 days to process and issue most COLAs, per Nevada Administrative Code (NAC) 445B.331. See exemptions for modeling below for a timeline of 30 days to process.*

2. How do I know my COLA is subject to the 30-day modeling timeline?
 - *This is the case if your COLA is located within the geographic area detailed below, or if your COLA will be located on a facility with an existing Stationary Air Quality Operating Permit.*

Tracy Segment – Hydrographic Area (HA) 83

Township	Range	Sections
19 North	21 East	1, 2, 10 through 14, and 23 through 25
19 North	22 East	All Sections
19 North	23 East	3 through 10, 16 through 21, and 29 through 31
20 North	22 East	24 through 26, 28, 29, and 31 through 36
20 North	23 East	19 through 21, and 27 through 34



3. Do I have to perform the modeling for the COLA?
 - *Yes, if your COLA is located on a facility site with an existing Stationary Air Quality Operating Permit, then you will need to perform a modeling demonstration (environmental evaluation), including your COLA and the stationary source, and submit it with the application. If the COLA is located in the Special Use Area shown in 2 above, you do not have to submit modeling, but the BAPC strongly encourages that you perform modeling to facilitate the timeliness of the process.*
4. How long is the term of a COLA permit?
 - *The life of a COLA permit is 12 months from issuance, because COLAs are for temporary sources under NAC 445B.194.*
5. My current COLA permit at a location has expired, can I get a new COLA permit?
 - *You may apply for a new COLA permit at that same location 90 days following expiration of the previous COLA permit, or 90 days after a COLA has been closed out. As mentioned above, the COLA is for temporary sources. The 90 days in between COLAs is to ensure the sources do not become stationary sources and require a different type of permit.*
6. Can I renew my COLA permit.
 - *COLA permits are designed for temporary construction sources and may not be renewed. They are good for a period of 12 months and there must be a 90-day window without a COLA operating at that location before another COLA can be issued for that location.*
7. I am a contractor with a current COLA, but I would like to add additional equipment. Can I do this?
 - *You can submit a revision to your current change of location. Please be aware that a revision to a COLA does not extend the life of the COLA. The life of a COLA is 12 months from original issuance.*
8. Can there be more than one COLA at a location?
 - *No. Please contact the BAPC permitting team to discuss if there are other options on your specific case.*
9. I am a stationary source that would like to bring temporary equipment on site for maintenance purposes, can I do this using a general air quality operating permit with a COLA?
 - *Yes, but the planned operations must no more than 12 months, fit within the parameters of a COLA, and modeling of the emissions from the planned COLA coupled with emissions from the stationary source cannot show an exceedance of ambient air quality standards.*

10. It appears I will need more than 12 months to finish my project/job. Is there any way I can extend the COLA?
- *No, you cannot extend the operating life of a COLA. Once 12 months has passed you must cease operations and wait 90 days to apply for a new COLA at that location. You may also submit an application to be a stationary source, but please be aware of the timelines to process stationary source operating permits.*
11. Is there any way to expedite the 90-day period in between COLAs?
- *No. Please contact the BAPC permitting team to discuss if there are other options on your specific case.*
12. I have not been actively working a site for the last 3 months and now my permit is expired, and I want to access the site again. Can I skip the 90-day wait period?
- *No. You must wait the full 90 days from expiration of the last COLA at that location. Unless you have submitted the COLA closeout form, you have had permitted authorization to be active at a COLA location up until the day of expiration.*
13. Is there any way to expedite the 10-day or 30-day processing timeline?
- *No. Please contact the BAPC permitting team to discuss if there are other options on your specific case.*
14. Does my throughput have to be the same for all equipment?
- *No, but if there is a drop in throughput between equipment (e.g. conveyor exiting a screen has lower throughput than the screen), you will need a way to show compliance with the lower throughput (i.e. weight belts).*
15. How many times can I have a COLA at the same site?
- *The COLA is intended for temporary use as defined in NAC 445B.194. The BAPC will only issue three consecutive COLAs at the same site for the same facility. More than this, the BAPC will require a stationary air quality operating permit. As mentioned above, there also must be 90 days between COLAs. Please contact the BAPC permitting team to discuss if there are other options on your specific case.*
16. Things to Consider:
- *Be sure to submit the Start of Operations and Completion of Operation Forms.*
 - *Do not submit an application for your COLA too early. The timeline for you to operate under the COLA will begin from the initial issuance of the permit.*